

TCC-2 Heavy-Duty Modular

01/28/2025



info@cesehsa.com.mx

cesehsa.com.mx



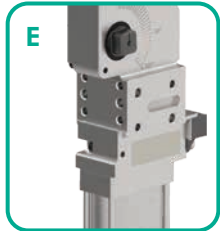
TCC-2

Enclosed Pneumatic Power Clamps | Heavy-Duty, Tolerance Compensation | Ordering Information

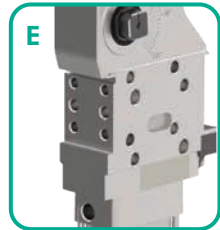
TCC-2 E 03 00 6A L8

Mounting	Description	Clamp Arm Shaft	Description	Hand Lever	Description
E	Standard Mounting	03	for U-Arms	00	No Hand lever
B	Common Front Mount for Size 40 only (same mount pattern as size 50 & 63)	23	for Lateral Arms		
N	NAAMS Side Mounting for Size 63 only	See below for further details			

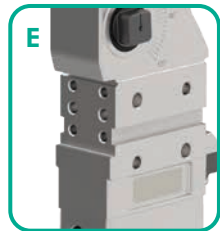
Mounting



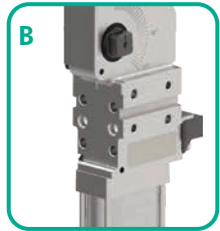
Size 40



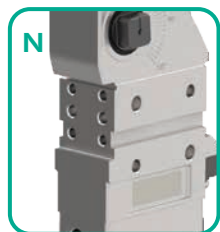
Size 50



Size 63



Size 40 Only

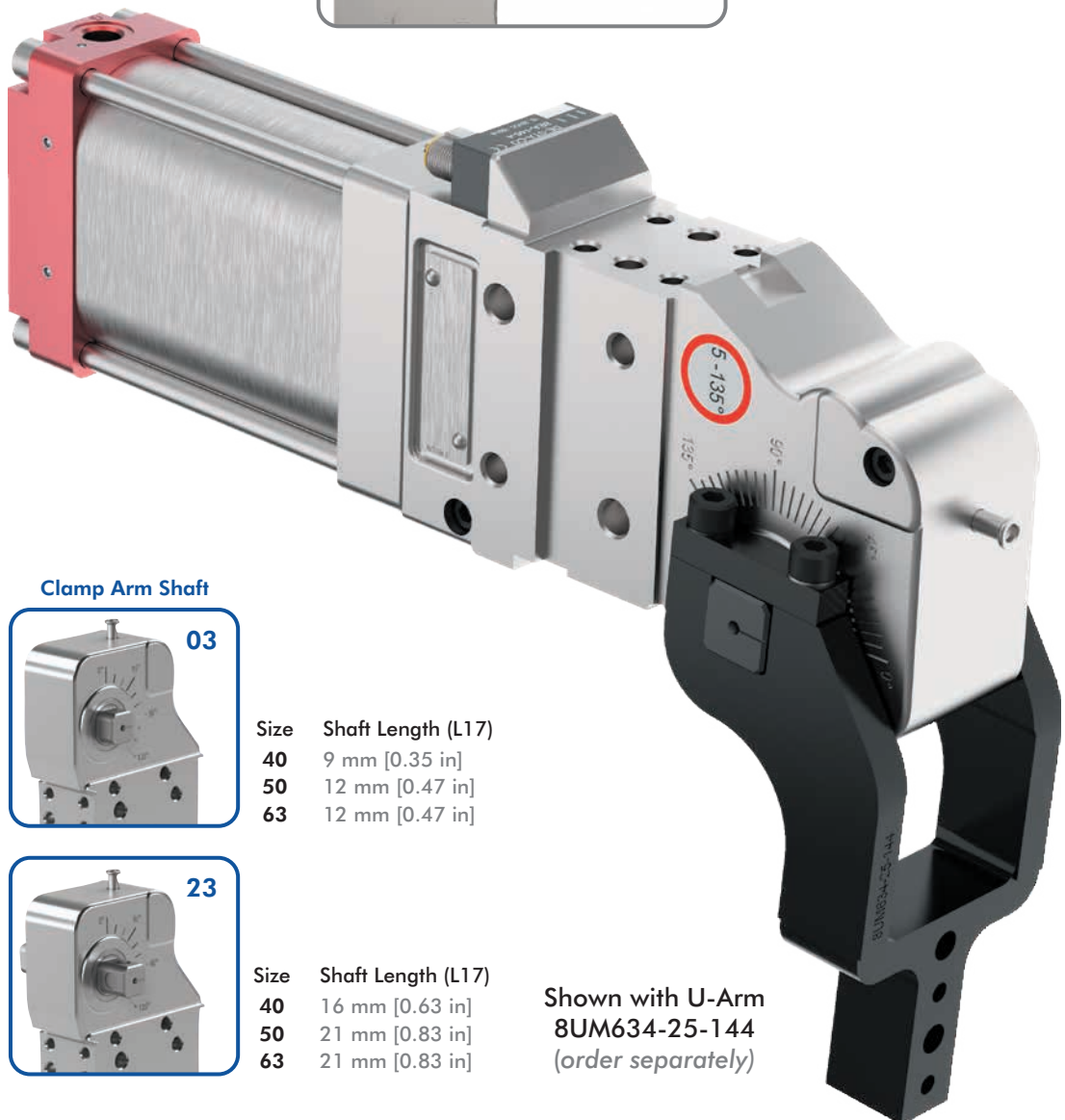


Size 63 Only



Tolerance compensation for variable part thicknesses

- Tolerance compensation for variable sheet metal thicknesses within three degrees of arm movement
- There is no need for shimming



Clamp Arm Shaft



03

Size	Shaft Length (L17)
40	9 mm [0.35 in]
50	12 mm [0.47 in]
63	12 mm [0.47 in]



23

Size	Shaft Length (L17)
40	16 mm [0.63 in]
50	21 mm [0.83 in]
63	21 mm [0.83 in]

Shown with U-Arm
8UM634-25-144
(order separately)

Enclosed Pneumatic Power Clamps | Heavy-Duty, Tolerance Compensation | Ordering Information

Sensor	Description
00	Without Sensing System
L8*	PNP Sensor with In-line M12x1 Connector (8EA-146-4-B)
N8*	NPN Sensor with In-line M12x1 Connector (8EA-154-4-B)
L9	PNP Sensor with 90° M12x1 Connector (8EA-147-4-B)
N9	NPN Sensor with 90° M12x1 Connector (8EA-155-4-B)
K8	PNP Sensor with M12x1 Cable Connector (8EA-158-4-B)
K9	NPN Sensor with M12x1 Cable Connector (8EA-167-4-B)

*Not available for use with 4V, 5V, 6V cylinder option.

Part numbers listed above are for sensor box only. For complete sensor kits see page 69.



L8/N8



L9/N9

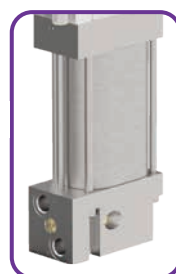


K8/K9



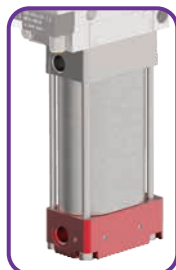
Cylinder (Standard)

- 40 40 mm Cylinder (G1/8 Port)
- 50 50 mm Cylinder (G1/4 Port)
- 5N 50 mm Cylinder (1/4-18 NPT Port)
- 63 63 mm Cylinder (G1/4 Port)
- 6N 63 mm Cylinder (1/4-18 NPT Port)



Cylinder with Unlockable Return Valve

- 4C 40 mm Cylinder (G1/8 Port)
- 5C 50 mm Cylinder (G1/4 Port)
- 5D 50 mm Cylinder (1/4-18 NPT Port)
- 6C 63 mm Cylinder (G1/4 Port)
- 6D 63 mm Cylinder (1/4-18 NPT Port)



Cylinder with Internal Hold Open Device

- 4A 40 mm Cylinder (G1/8 Port)
- 5A 50 mm Cylinder (G1/4 Port)
- 5B 50 mm Cylinder (1/4-18 NPT Port)
- 6A 63 mm Cylinder (G1/4 Port)
- 6B 63 mm Cylinder (1/4-18 NPT Port)



Cylinder with Piston Rod Locking Device

- 4V 40 mm Cylinder (G1/8 Port)
- 5V 50 mm Cylinder (G1/4 Port)
- 6V 63 mm Cylinder (G1/4 Port)



40

Max Holding/
Clamping Torque
85 Nm [62.7 ft-lb]
at 5 bar [72 psi]



50

Max Holding/
Clamping Torque
175 Nm [129 ft-lb]
at 5 bar [72 psi]



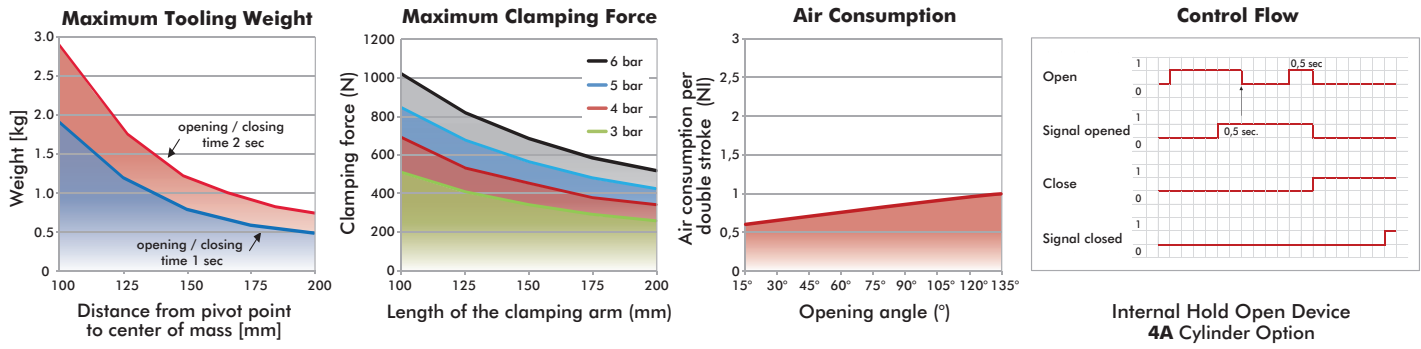
63

Max Holding/
Clamping Torque
295 Nm [217.6 ft-lb]
at 5 bar [72 psi]

TCC-2

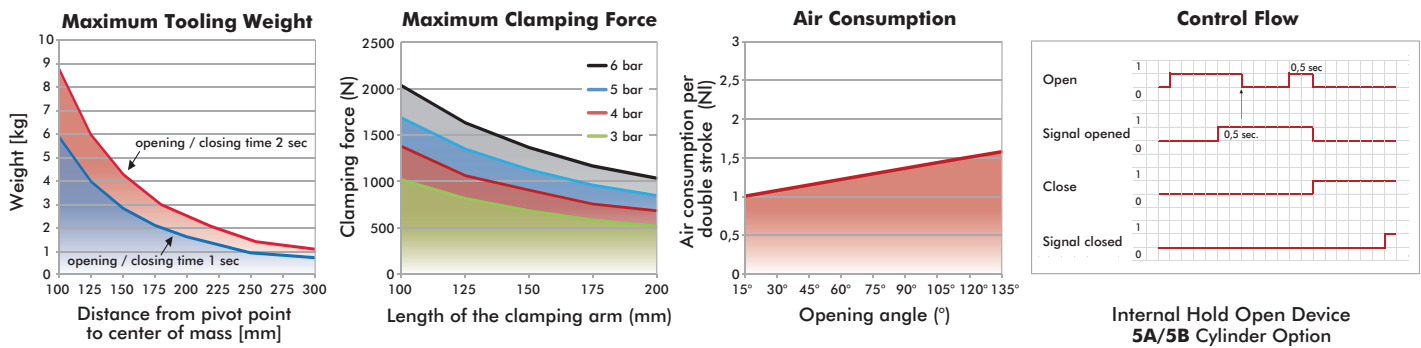
Enclosed Pneumatic Power Clamps | Heavy-Duty, Tolerance Compensation | Technical Specifications

Model	Max. Holding Torque (Nm)	Clamping Torque at 5 bar (Nm)	Cylinder Ø (mm)	Weight (kg)	Air Consumption per double stroke at 5 bar (liter)
TCC-2.....40..	85	85	40	1,6	0,9
TCC-2.....4A..					
TCC-2.....4B..					
TCC-2.....4C..				1,7	
TCC-2.....4V..				1,6	



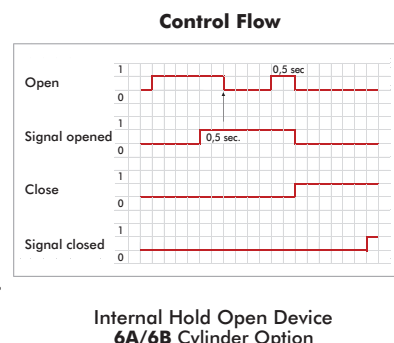
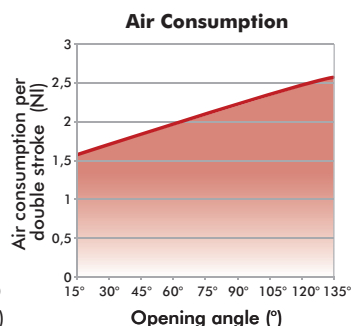
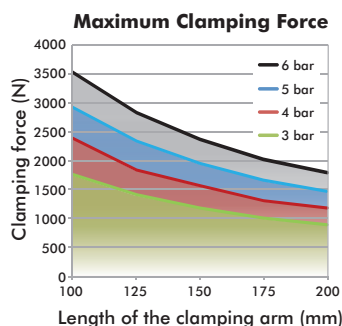
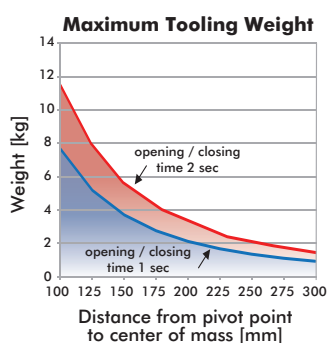
ATTENTION: Calculation tool available. Please consult factory.

Model	Max. Holding Torque (Nm)	Clamping Torque at 5 bar (Nm)	Cylinder Ø (mm)	Weight (kg)	Air Consumption per double stroke at 5 bar (liter)
TCC-2E...50..	175	175	50	2,8	1,6
TCC-2E...5N..					
TCC-2E...5A..					
TCC-2E...5B..					
TCC-2E...5C..				3,0	
TCC-2E...5D..					
TCC-2E...5V..				2,9	



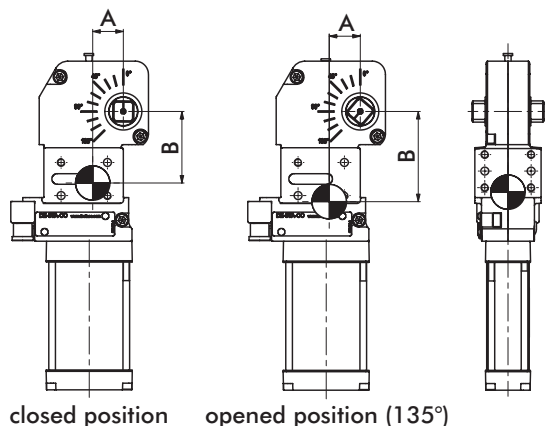
ATTENTION: Calculation tool available. Please consult factory.

Model	Max. Holding Torque (Nm)	Clamping Torque at 5 bar (Nm)	Cylinder Ø (mm)	Weight (kg)	Air Consumption per double stroke at 5 bar (liter)
TCC-2.....63..	295	295	63	3,8	2,6
TCC-2.....6N..				4,0	
TCC-2.....6A..					
TCC-2.....6B..					
TCC-2.....6C..					
TCC-2.....6D..					
TCC-2.....6V..	4,2				



ATTENTION: Calculation tool available. Please consult factory.

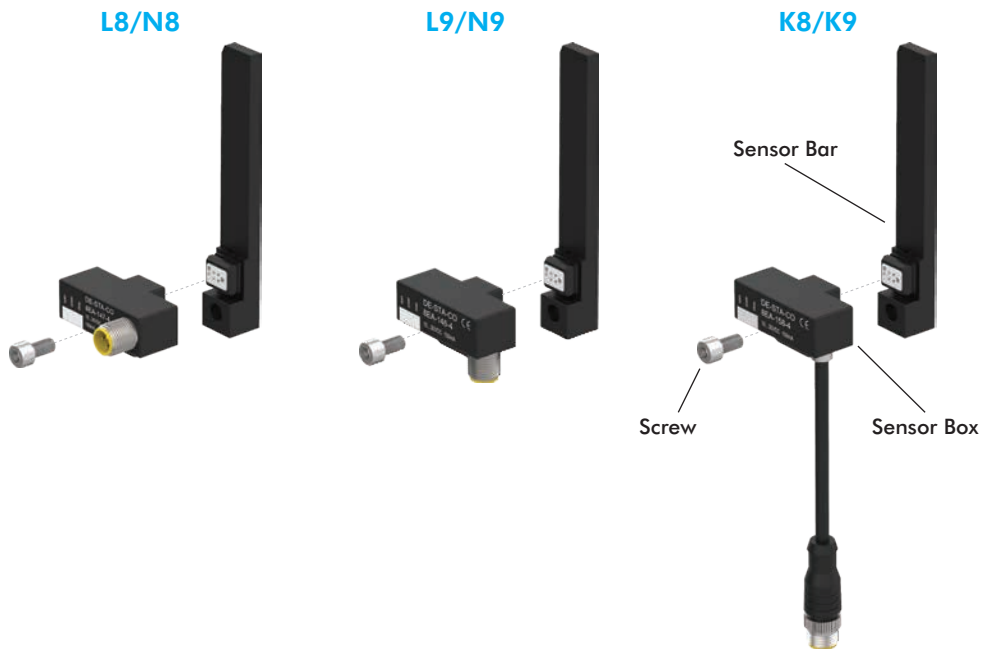
Center of Mass



Model	A		B		Weight
	Closed	Open	Closed	Open	
TCC-2E...40..	23	24	55	69	1,5
TCC-2B...40..	24		54	68	
TCC-2E...4A..	22			86	1,6
TCC-2B...4A..	23	23	72	85	
TCC-2E...4C..	25			89	1,7
TCC-2B...4C..	26	26	76	88	
TCC-2E...4V..	24			80	1,6
TCC-2B...4V..	24	24	66	79	
TCC-2E...50..				87	2,6
TCC-2E...5N..	24	25	70	87	
TCC-2E...5A..				99	2,8
TCC-2E...5B..			83	99	
TCC-2E...5C..	27			110	3,0
TCC-2E...5D..	27	27	96	110	
TCC-2E...5V..	25			99	2,9
TCC-2E...5V..	25	26	84	99	
TCC-2.....63..				105	3,7
TCC-2.....6N..	27	28	89	105	
TCC-2.....6A..				114	3,9
TCC-2.....6B..			98	114	
TCC-2.....6C..	30			130	4,4
TCC-2.....6D..	30	30	116	130	
TCC-2.....6V..	28			119	3,9
TCC-2.....6V..	28	28	103	119	

TCC-2, 82M-3, 52H-3 SENSORS

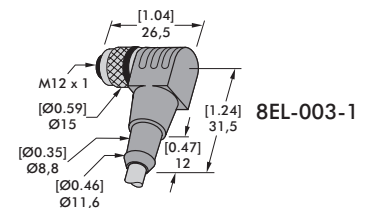
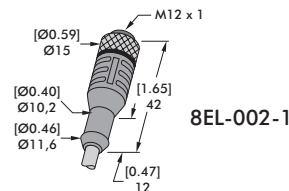
Replacement Sensor Kits and Components

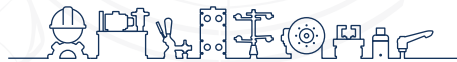


Fits Base Models	Complete Sensor Kits (Includes Sensor Box, Sensor Bar, Screw)		Component Part No.			
	Order No.	Description	Sensor Kit	Sensor Box	Sensor Bar	Screw
TCC-2.....4.	L8	PNP w/In-line M12x1 Connector	8EA-146-4-B-03	8EA-146-4-B	8EA-168-4-G	M6X12-912-ZN
	N8	NPN w/In-line M12x1 Connector	8EA-154-4-B-03	8EA-154-4-B		
	L9	PNP w/90° M12x1 Connector	8EA-147-4-B-03	8EA-147-4-B		
	N9	NPN w/90° M12x1 Connector	8EA-155-4-B-03	8EA-155-4-B		
	K8	PNP w/M12x1 Cable Connector	8EA-158-4-B-03	8EA-158-4-B		
	K9	NPN w/M12x1 Cable Connector	8EA-167-4-B-03	8EA-167-4-B		
TCC-2.....5., 6. 82M-3.....4., 5., 6. 52H-3.....50, 63	L8	PNP w/In-line M12x1 Connector	8EA-146-4-B-01	8EA-146-4-B	8EA-148-4-G	M6X12-912-ZN
	N8	NPN w/In-line M12x1 Connector	8EA-154-4-B-01	8EA-154-4-B		
	L9	PNP w/90° M12x1 Connector	8EA-147-4-B-01	8EA-147-4-B		
	N9	NPN w/90° M12x1 Connector	8EA-155-4-B-01	8EA-155-4-B		
	K8	PNP w/M12x1 Cable Connector	8EA-158-4-B-01	8EA-158-4-B		
	K9	NPN w/M12x1 Cable Connector	8EA-167-4-B-01	8EA-167-4-B		
82M-3.....8.	L8	PNP w/In-line M12x1 Connector	8EA-146-4-B-02	8EA-146-4-B	8EA-149-4-G	M6X12-912-ZN
	N8	NPN w/In-line M12x1 Connector	8EA-154-4-B-02	8EA-154-4-B		
	L9	PNP w/90° M12x1 Connector	8EA-147-4-B-02	8EA-147-4-B		
	N9	NPN w/90° M12x1 Connector	8EA-155-4-B-02	8EA-155-4-B		
	K8	PNP w/M12x1 Cable Connector	8EA-158-4-B-02	8EA-158-4-B		
	K9	NPN w/M12x1 Cable Connector	8EA-167-4-B-02	8EA-167-4-B		

Sensor Cables Order separately

Order No.	Description
8EL-002-1	M12x1, Straight, 5-pin Connector with 5 m [16 ft] Cable
8EL-003-1	M12x1, Angular, 4-pin Connector with 5 m [16 ft] Cable





inf @ /CESEHSA.com.mx

