

Straight Line Action (Plunger) Clamps

01/28/2025



info@cesehsa.com.mx

cesehsa.com.mx



Straight Line Action (Plunger) Clamps

01/28/2025

This catalog is a custom document and the products included is based on your unique selection from portions of complete catalogs that already exist. Please refer to our full catalogs for more information on products not included in this customized document.

Table of Contents

Straight Line Action (Plunger) Clamps

MC-SLA-1

Straight Line Action (Plunger) Clamps

01/28/2025

Table of Contents (continued)

6001 SERIES

Straight Line Action Clamps | Product Overview

Features:

- Heavier duty version of Model 601 with 50% more holding capacity
- Mounting pattern interchangeable with Model 601
- Allow handle to fall below mounting plane to lock in retracted position

Applications:

- Assembly
- Testing
- Soldering
- Gluing

Also Available:

See page MC-ACC-1 for accessories

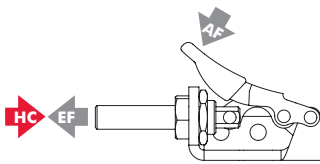
6001
6001-M



6001-SS
6001-MSS

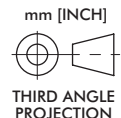
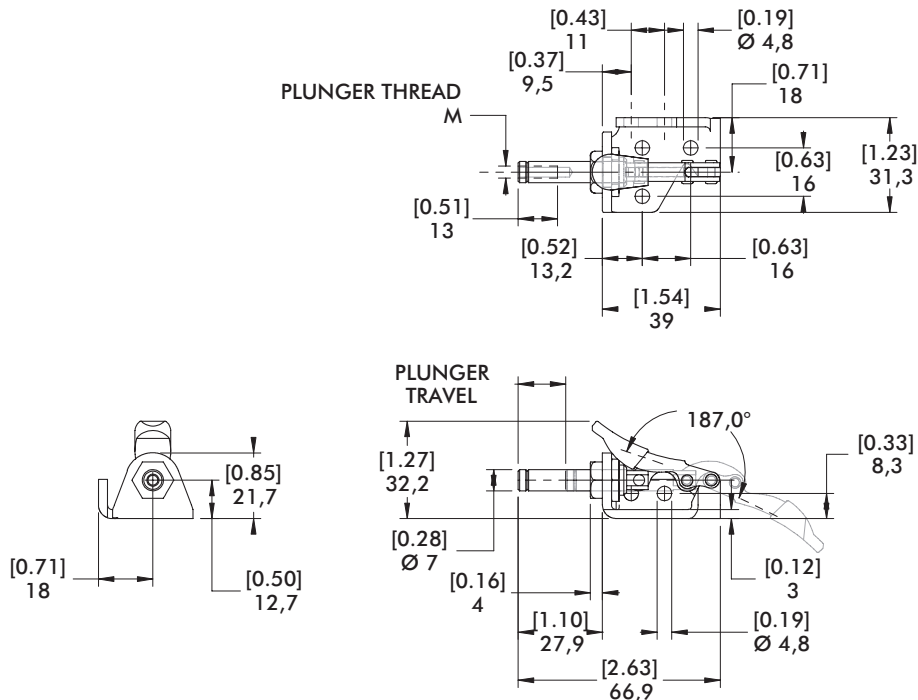


Technical Information | Holding Capacities | Dimensions



Model	Max. Holding Capacity	Weight	EF:AF (pushing/pulling)	Plunger Travel	(M) Plunger Thread	Spindle (Recommended)	Spindle Included
6001	[150 lbf] 670 N	[0.12 lb] 0,05 kg	14:1/25:1	[0.63] 16	#8-32	105203	No
6001-M					M4	205208-M	
6001-SS					#8-32	205943	Yes
6001-MSS	M4	205943-M					

HC = Holding Capacity, EF = Exerting Force, AF = Applied Force



601 SERIES

Straight Line Action Clamps | Product Overview

Features:

- Compact straight line action clamp

Applications:

- Assembly
- Testing
- Soldering
- Gluing

Also Available:

See page MC-ACC-1 for accessories

601



601-M



601-O
External
Thread



601-SS
Stainless steel

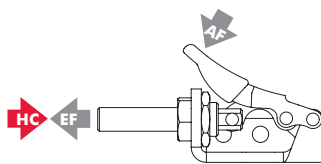


601-OSS ⓘ

Stainless steel
External
thread

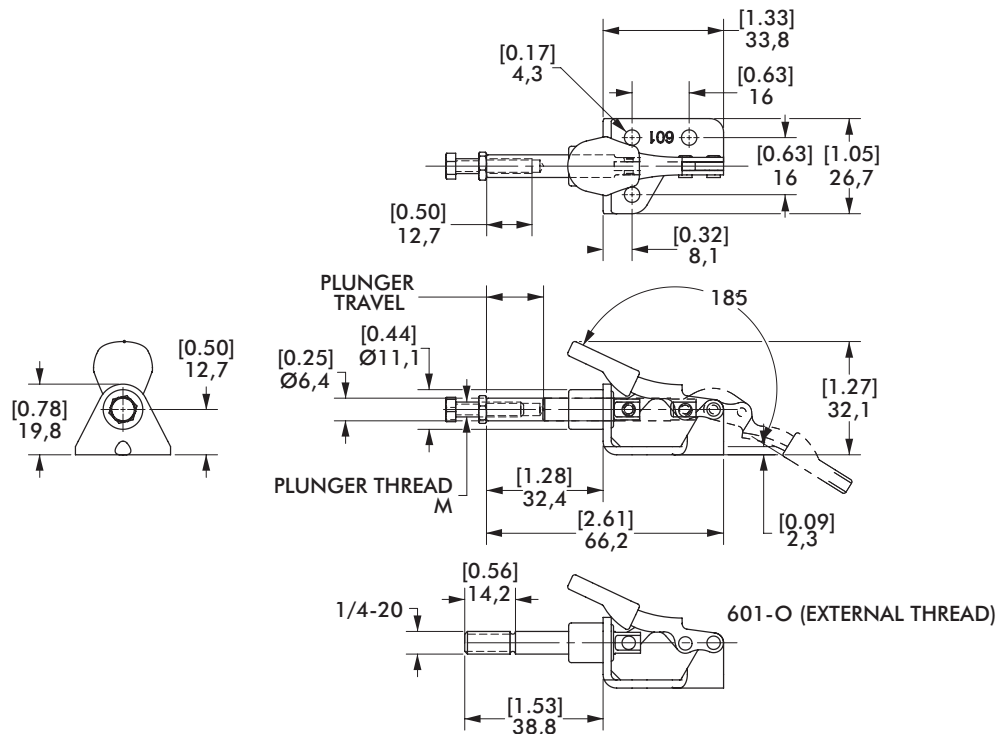


Technical Information | Holding Capacities | Dimensions



Model	Max. Holding Capacity	Weight	EF:AF (pushing/pulling)	Plunger Travel (M)	Plunger Thread (M)	Spindle (Recommended)	Spindle Included
601					#8-32	105203	Yes
601-M					M4	205208-M	No
601-O	[100 lbf] 440 N	[0.09 lb] 0,04 kg	14:1/25:1	[0.63] 16	1/4-20	--	No
601-SS					#8-32	205943	Yes
601-OSS ⓘ					1/4-20	--	No

ⓘ This item is available upon request HC = Holding Capacity, EF = Exerting Force, AF = Applied Force



6015 SERIES

Straight Line Action Clamps | Product Overview

Features:

- Smallest of the solid base Straight Line Action clamps
- Compact design combined with high holding capacity
- Allow handle to fall below mounting plane to lock in retracted position

Applications:

- Assembly
- Checking fixtures
- Tensioning devices

Also Available:

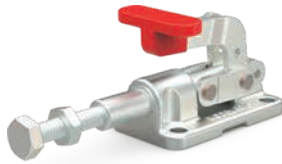
See page MC-ACC-1 for accessories

Covered under one or more U.S./International Patents

6015
6015-M



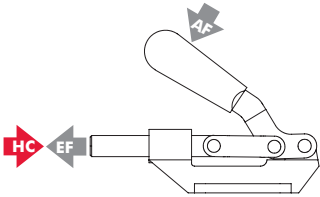
6015-SS,
6015-MSS
Stainless
Steel



6015-R,
6015-MR
with DESTACO®
Toggle Lock
Plus™



Technical Information | Holding Capacities



Model	Max. Holding Capacity	Weight	EF:AF (pushing)	Plunger Travel	(M) Plunger Thread	Recommended Spindle (Not Supplied)
6015	[560 lbf] 2500 N				1/4-20	205203
6015-M					M6	205203-M
6015-SS	[630 lbf] 2800 N	[0.35 lb] 0,15 kg	35:1	[0.70] 17,8	1/4-20	202943 (supplied)
6015-MSS					M6	202916-M (supplied)
6015-R	[560 lbf] 2500 N				1/4-20	205203
6015-MR					M6	205203-M

HC = Holding Capacity, EF = Exerting Force, AF = Applied Force

6015 SERIES

Straight Line Action Clamps | Dimensions | -M/-SS/-MSS/-R/-MR

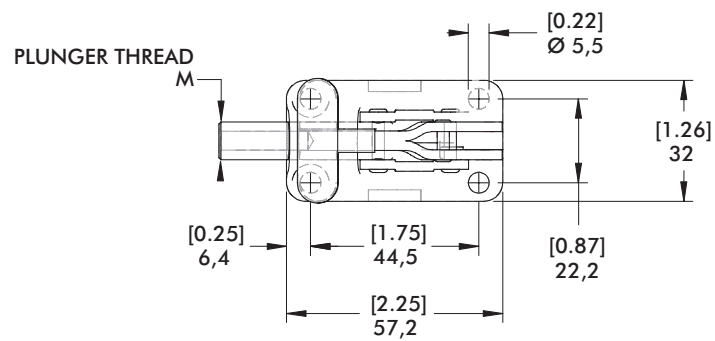
6015
6015-M



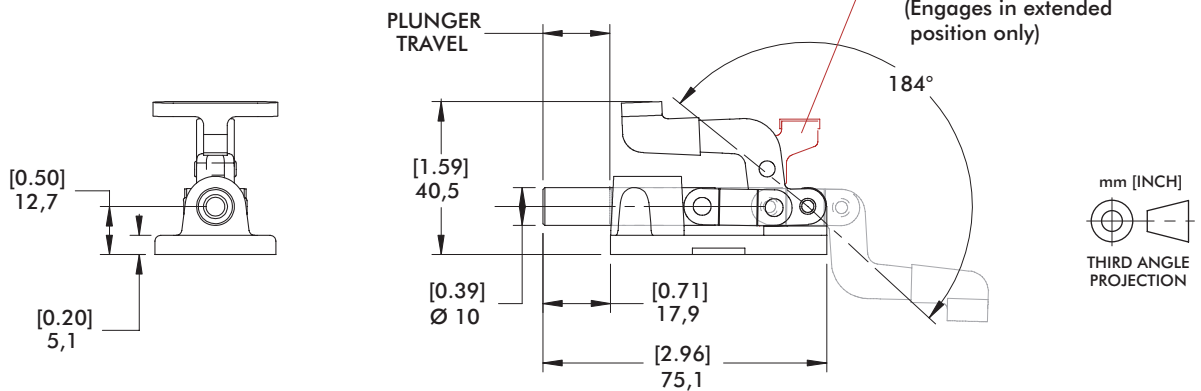
6015-SS,
6015-MSS
Stainless
Steel



6015-R,
6015-MR
with DESTACO®
Toggle Lock Plus™



DESTACO®
TOGGLE LOCK
PLUS™ OPTION
6015-R / 6015-MR
(Engages in extended
position only)



mm [INCH]
THIRD ANGLE
PROJECTION

603, 608 SERIES

Straight Line Action Clamps | Product Overview

Features:

- Allow handle to rotate and fall below mounting plane to lock in retracted position
- Large holding capacities for their size
- Available with DESTACO® Toggle Lock Plus™
- 5 handle colors - see page MC-PRO-7 for details

Applications:

- Assembly & test
- Checking fixtures
- Welding fixtures
- Tensioning devices

Also Available:

See page MC-ACC-1 for accessories

803 Pneumatic Toggle Clamp
See page MC-PTC-23

803-ME Pneumatic Toggle Clamp
See page MC-PTC-23

Covered under one or more U.S./International Patents

603
603-M



603-SS
603-MSS
Stainless
Steel



603-R
603-MR
with
DESTACO®
Toggle Lock
Plus™



608
608-M



Color Handles

Available on models in this series.* Add -Y, -G, -B, -K to end of model number.

*Excludes Toggle Lock Plus levers.



Technical Information | Holding Capacities

Model	Max. Holding Capacity	Weight	EF:AF (pushing/pulling)	Plunger Travel	(M) Plunger Thread	Recommended Spindle (Not Supplied)
603	[600 lbf] 2670 N				5/16-18	207203
603-M					M8	207203-M
603-SS	[840 lbf] 3740 N	[0.83 lb] 0,38 kg	23:1/34:1	[1.25] 31,8	5/16-18	207943
603-MSS					M8	207943-M (supplied)
603-R	[600 lbf] 2670 N				5/16-18	207203
603-MR					M8	207203-M
608	[850 lbf] 3780 N	[1.25 lb] 0,57 kg	44:1/50:1	[1.63] 41,3	3/8-16	210203
608-M					M10	210203-M

HC = Holding Capacity, EF = Exerting Force, AF = Applied Force

603, 608 SERIES

Straight Line Action Clamps | Dimensions | -M/-SS/-MSS/-R/-MR

603
603-M



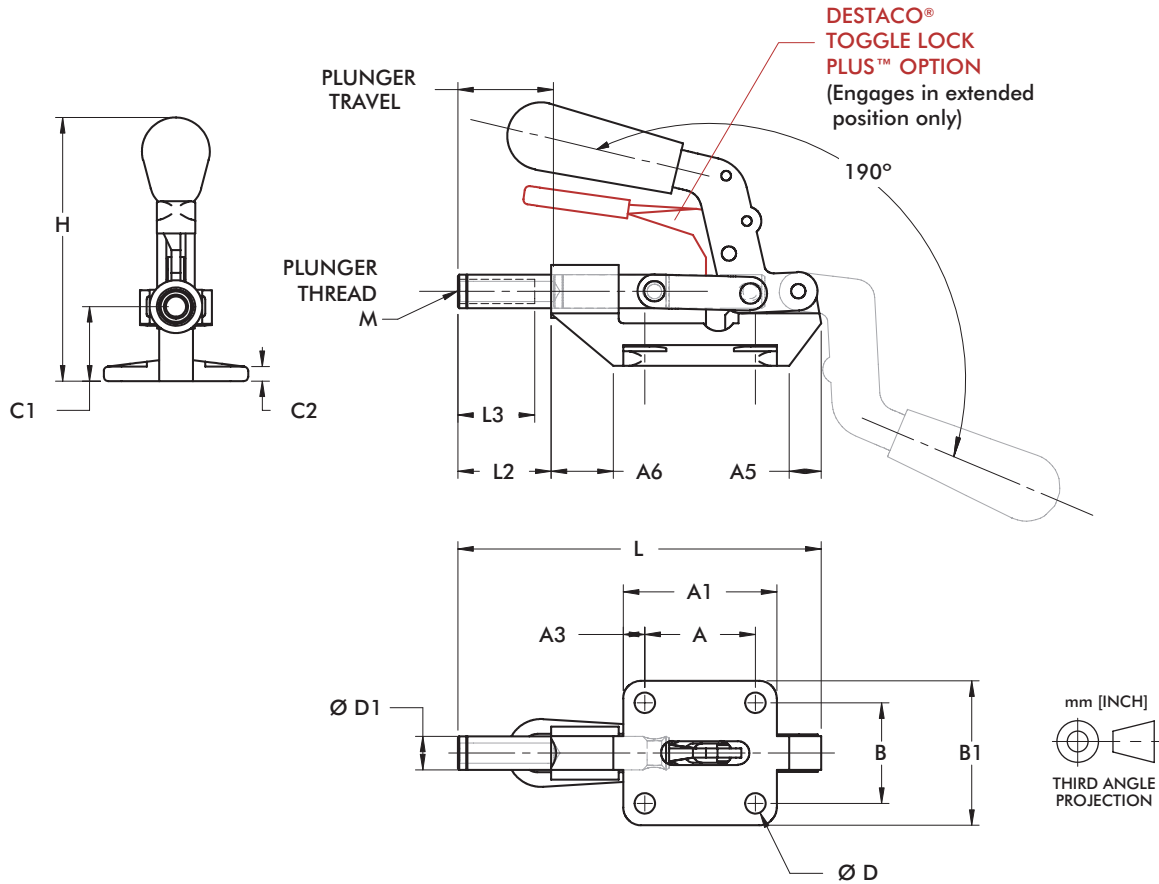
603-SS
603-MSS
Stainless Steel



603-R
603-MR
with
DESTACO®
Toggle Lock
Plus™



608
608-M



Model	A	A1	A3	A5	A6	B	B1	C1	C2	D	D1	H	L	L2	L3
603		[2.17]	[0.34]	[0.51]	[0.82]				[0.19]		[0.44]	[3.43]	[4.77]		
603-M		55	8,5	13	21				4,8		11,1	87	121,2		
603-SS	[1.44]			[0.54]	[0.65]	[1.31]	[1.88]	[0.97]	[0.25]	[0.27]	[0.47]	[3.28]	[4.69]	[1.28]	[1.00]
603-MSS	36,6	[2.20]	[0.30]	13,6	16,5	33,3	48	24,6	6,4	6,8	12	83,4	119,2	32,5	25,4
603-R				[0.51]	[0.82]						[0.44]	[3.43]	[4.77]		
603-MR				13	21						11,1	87	121,2		
608	[1.63]	[2.25]	[0.31]	[0.75]	[1.40]	[1.63]	[2.25]	[1.25]	[0.19]						
608-M	41,4	57,2	8	19	36	41,4	57,2	31,8	4,8	[0.33]	[0.62]	[4.04]	[6.00]	[1.59]	[1.25]
										8,4	15,8	102,6	152,3	40,5	31,8

605 SERIES

Straight Line Action Clamps | Product Overview

Features:

- For push/pull clamping
- Allow handle to rotate and fall below mounting plane to lock in retracted position
- 5 handle colors - see page MC-PRO-7 for details

Applications:

- Assembly & test
- Woodworking
- Tensioning devices

Also Available:

See page MC-ACC-1 for accessories
Reverse action version Model 615/615-M

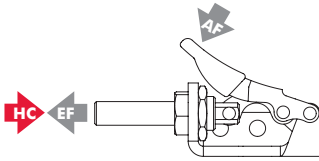
605
605-M



Color Handles
Available on this model.
Add -Y, -G, -B, -K to
end of model number.

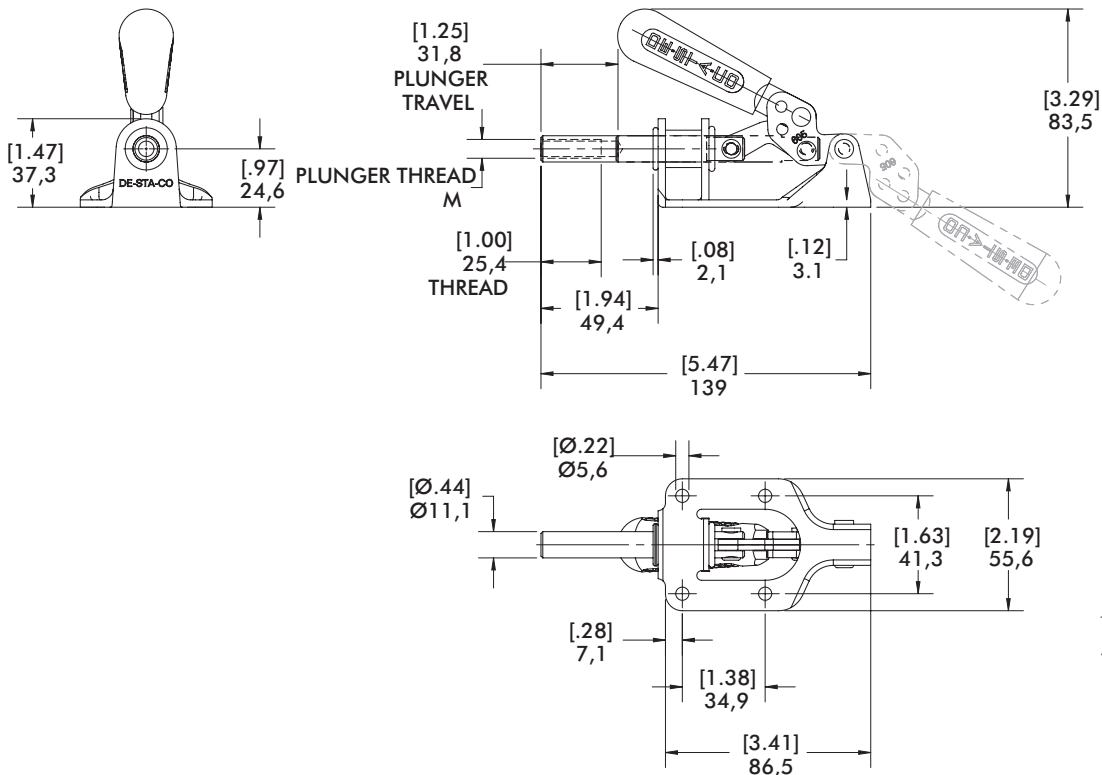


Technical Information | Holding Capacities | Dimensions



Model	Max. Holding Capacity	Weight	EF:AF (pushing/pulling)	Plunger Travel	(M) Plunger Thread	Recommended Spindle (Not Supplied)
605	[300 lbf] 1330 N	[0.69 lb] 0,31 kg	45:1/40:1	[1.25] 31,8	5/16-18	207203
605-M					M8	207203-M

HC = Holding Capacity, EF = Exerting Force, AF = Applied Force



Features:

- Handle and linkage swivel 125° for mounting flexibility
- Narrow base for tight spaces
- Plunger locks in extended position only

Applications:

- Assembly & test
- Woodworking
- Tensioning devices

Also Available:

See page MC-ACC-1 for accessories

606
606-M



Mounting configuration:

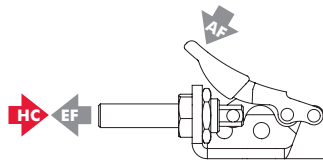


Bottom Mount



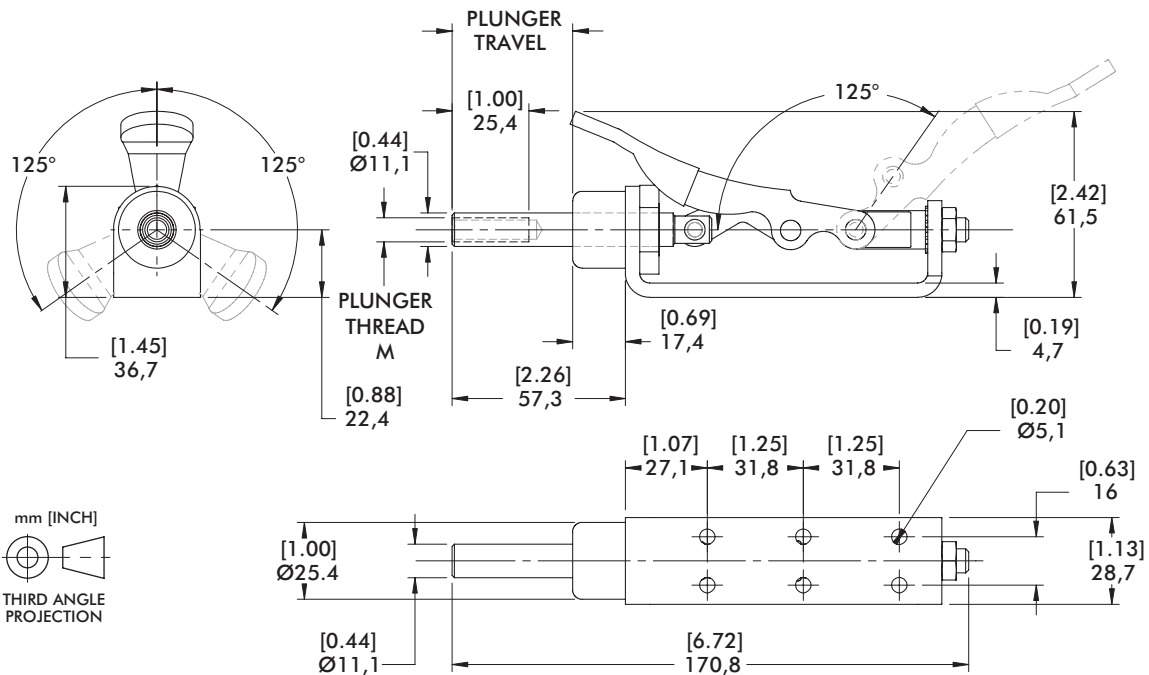
Side Mount

Technical Information | Holding Capacities | Dimensions



Model	Max. Holding Capacity	Weight	EF:AF (pushing)	Plunger Travel	(M) Plunger Thread	Recommended Spindle (Not Supplied)
606	[450 lbf] 2000 N	[0.81 lb] 0,37 kg	33:1	[1.57] 40	5/16-18	207203
606-M					M8	207203-M

HC = Holding Capacity, EF = Exerting Force, AF = Applied Force



607 SERIES

Straight Line Action Clamps | Product Overview

Features:

- Low profile and high holding capacity for its size
- Available with round or square plunger to resist torsional loads
- Allow handle to rotate and fall below mounting plane to lock in retracted position
- 5 handle colors - see page MC-PRO-7 for details

Applications:

- Assembly & test
- Welding
- Tensioning devices

Also Available:

See page MC-ACC-1 for accessories

607
607-M



607-SQ
607-SQM
with Square
Plunger

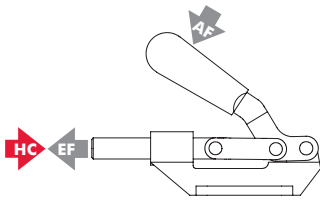


Color Handles

Available on models in this series. Add -Y, -G, -B, -K to end of model number.

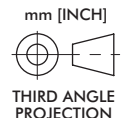
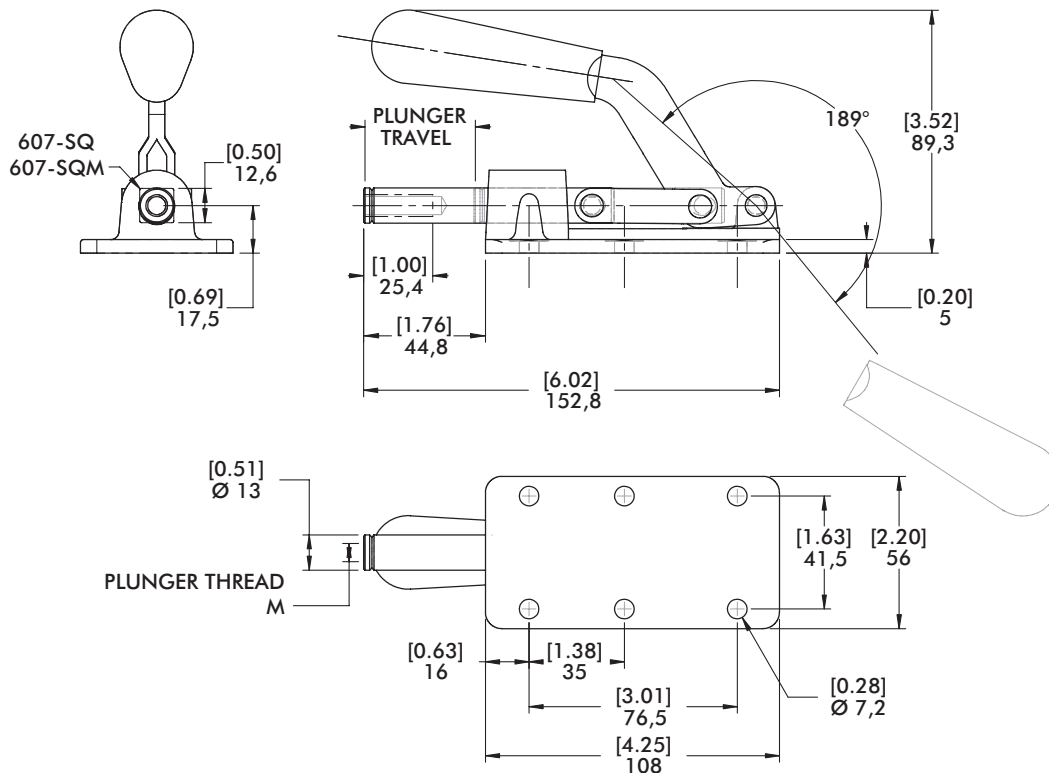


Technical Information | Holding Capacities | Dimensions



Model	Max. Holding Capacity	Weight	EF:AF (pushing/pulling)	Plunger Travel	(M) Plunger Thread	Recommended Spindle (Not Supplied)
607					5/16-18	207203
607-M	[800 lbf]	[1.63 lb]	37:1/64:1	[1.63] 41,4	M8	207203-M
607-SQ	3560 N	0,74 kg			5/16-18	207203
607-SQM					M8	207203-M

HC = Holding Capacity, EF = Exerting Force, AF = Applied Force



Features:

- Low profile and high holding capacity for its size
- Flanged or straight base
- Allow handle to rotate and fall below mounting plane to lock in retracted position
- 5 handle colors - see page MC-PRO-7 for details

Applications:

- Assembly & test
- Welding
- Tensioning devices

Also Available:

See page MC-ACC-1 for accessories

609
Flanged Base



609-B
Straight Base

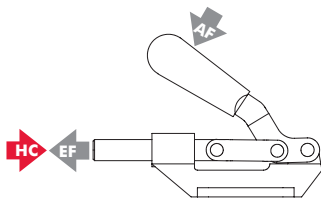


Color Handles

Available on models in this series. Add -Y, -G, -B, -K to end of model number.

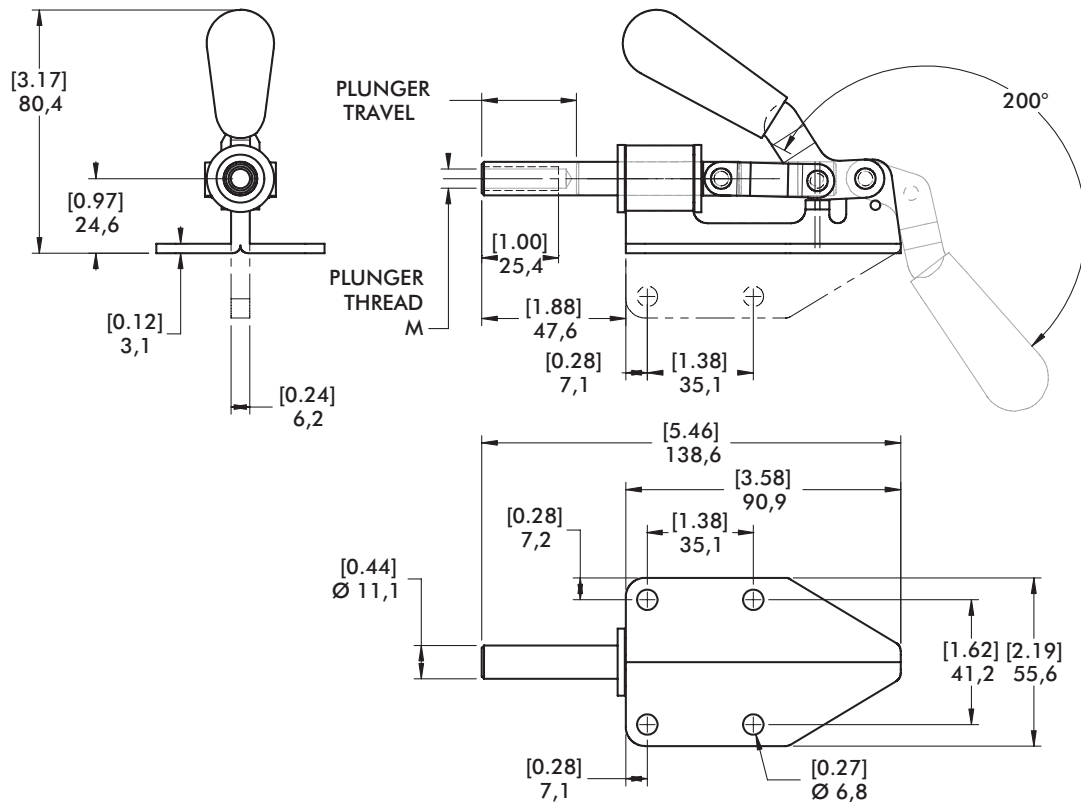


Technical Information | Holding Capacities | Dimensions



Model	Max. Holding Capacity	Weight	EF:AF (pushing/pulling)	Plunger Travel	(M) Plunger Thread	Recommended Spindle (Not Supplied)
609	[300 lbf] 1330 N	[0.88 lb] 0,40 kg	36:1/47:1	[1.25] 31,8	5/16-18	207203
609-B						

HC = Holding Capacity, EF = Exerting Force, AF = Applied Force



610 SERIES

Straight Line Action Clamps | Product Overview

Features:

- For push/pull clamping
- Allow handle to rotate and fall below mounting plane to lock in retracted position

Applications:

- Assembly & test
- Woodworking
- Tensioning devices

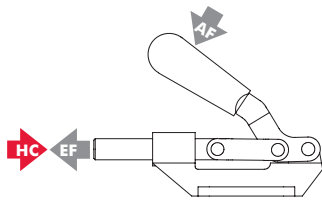
Also Available:

See page MC-ACC-1 for accessories

610
610-M

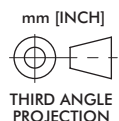
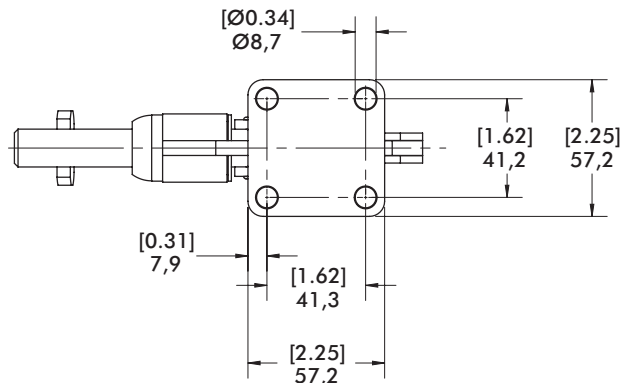
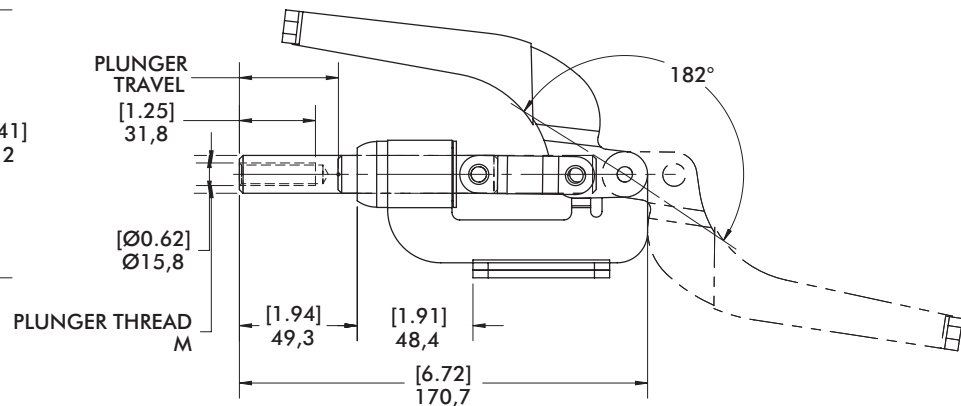
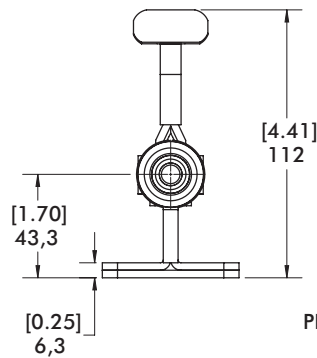


Technical Information | Holding Capacities | Dimensions



Model	Max. Holding Capacity	Weight	EF:AF (pushing/pulling)	Plunger Travel	(M) Plunger Thread	Recommended Spindle (Not Supplied)
610	[800 lbf]	[1.69 lb]	51:1/70:1	[1.63]	3/8-16	210203
610-M	3560 N	0,77 kg		41,4	M10	210203-M

HC = Holding Capacity, EF = Exerting Force, AF = Applied Force



615 SERIES

Straight Line Action Clamps | Product Overview

Features:

- Reverse handle action.
- Plunger locks in the extended position only as the handle is moved downward
- 5 handle colors - see page MC-PRO-7 for details

Applications:

- Assembly & test
- Woodworking
- Tensioning devices

Also Available:

See page MC-ACC-1 for accessories

615



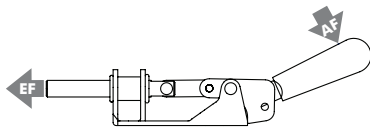
Color Handles

Available on this model.

Add -Y, -G, -B, -K to end of model number.

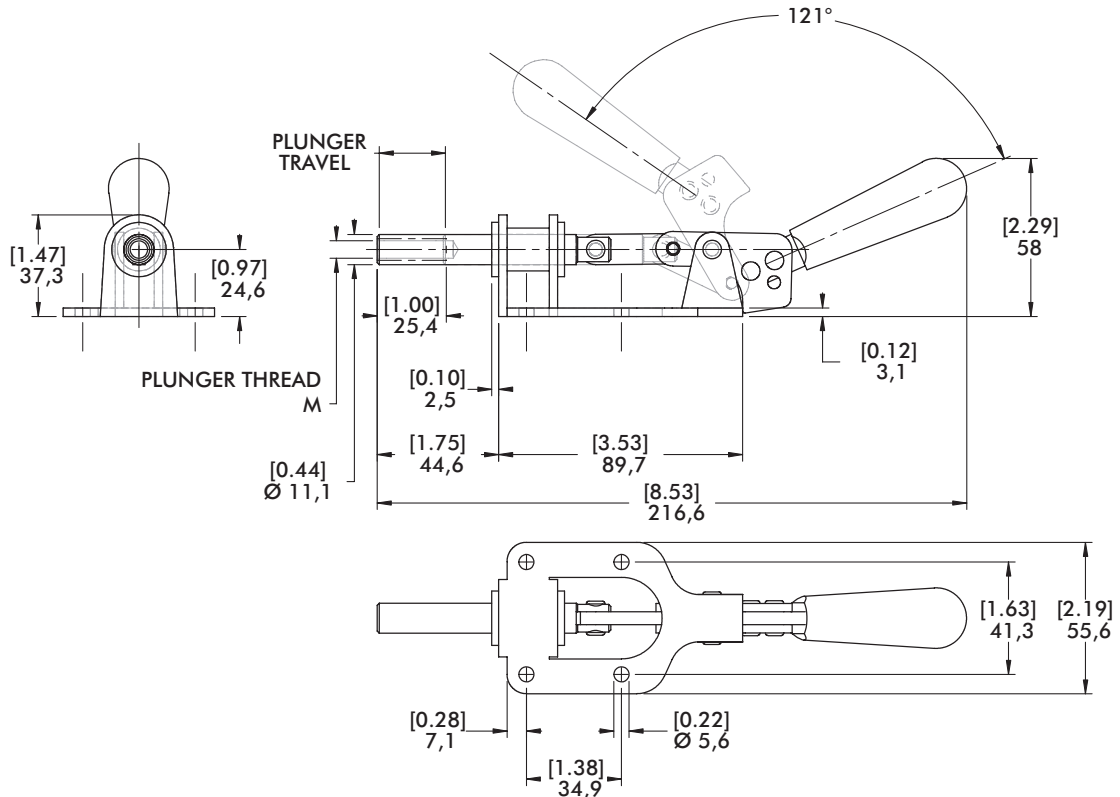


Technical Information | Holding Capacities | Dimensions



Model	Max. Holding Capacity	Weight	EF:AF (pushing)	Plunger Travel	(M) Plunger Thread	Recommended Spindle (Not Supplied)
615	[300 lbf] 1330 N	[0.69 lb] 0,31 kg	25:1	[1.00] 25,4	5/16-18	207203

HC = Holding Capacity, EF = Exerting Force, AF = Applied Force



620 SERIES

Straight Line Action Clamps | Product Overview

Features:

- Reverse handle action
- Plunger locks in the extended position only as the handle is moved downward
- 5 handle colors - see page MC-PRO-7 for details

Applications:

- Assembly & test
- Woodworking
- Tensioning devices

Also Available:

See page MC-ACC-1 for accessories

620
620-M

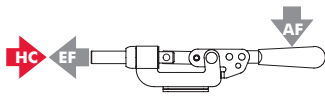


Color Handles

Available on this model.
Add -Y, -G, -B, -K to end of model number.

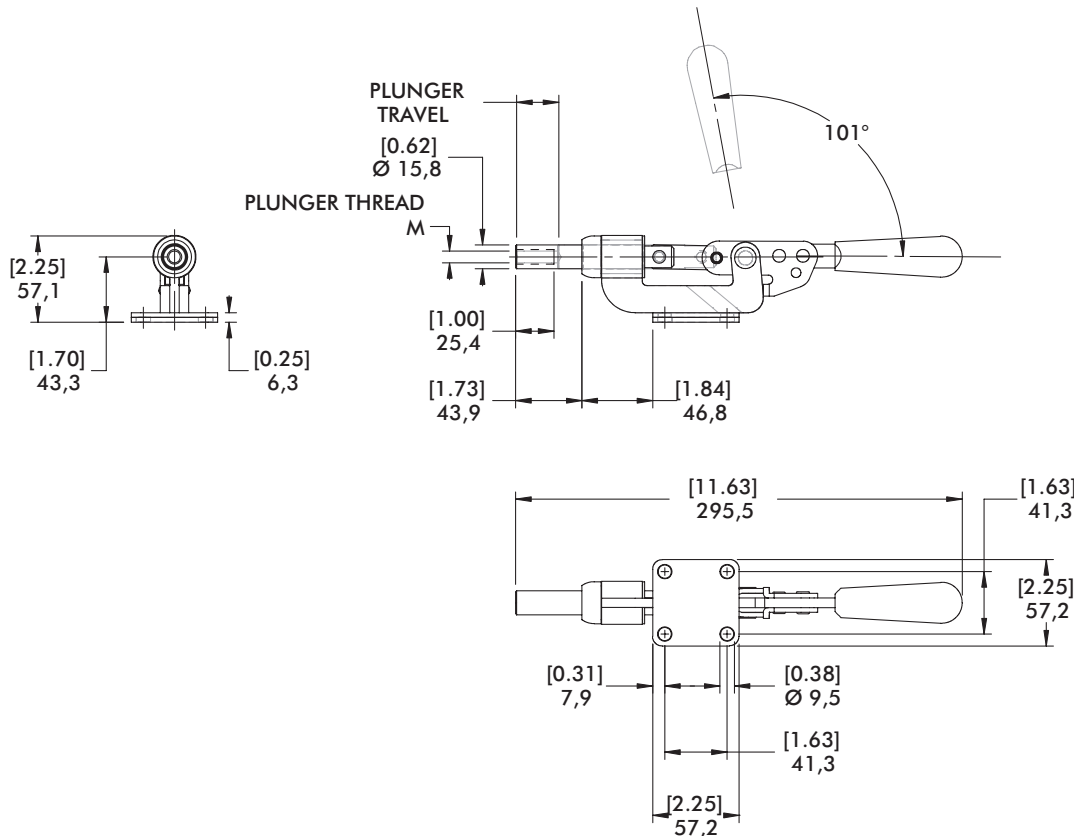


Technical Information | Holding Capacities | Dimensions



Model	Max. Holding Capacity	Weight	EF:AF (pushing)	Plunger Travel	(M) Plunger Thread	Recommended Spindle (Not Supplied)
620	[600 lbf] 2670 N	[1.50 lb] 0,68 kg	44:1	[1.11] 28,2	3/8-16	210203
620-M					M10	210203-M

HC = Holding Capacity, EF = Exerting Force, AF = Applied Force



630 SERIES

Straight Line Action Clamps | Product Overview

Features:

- For push/pull clamping
- Allow handle to rotate and fall below mounting plane to lock in retracted position
- Available in stainless steel
- Available with DESTACO® Toggle Lock Plus™
- 5 handle colors - see page MC-PRO-7 for details

Applications:

- Assembly & test
- Welding
- Tensioning devices

Also Available:

See page MC-ACC-1 for accessories
830, 830-ME Pneumatic Toggle Clamp
(See page MC-PTC-25)

630
630-M



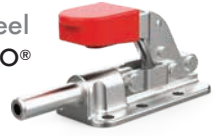
630-SS
630-MSS
Stainless Steel



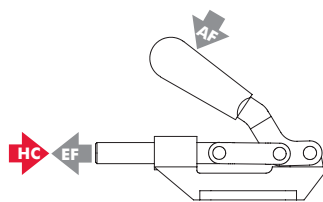
630-R
630-MR
with DESTACO®
Toggle Lock
Plus™



630-RSS
630-MRSS
Stainless Steel
with DESTACO®
Toggle Lock
Plus™



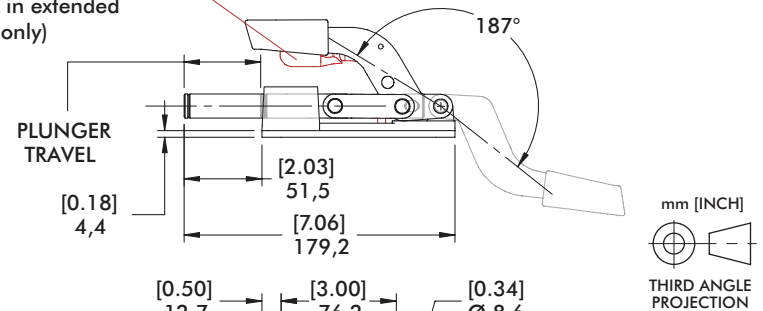
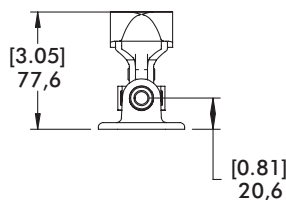
Technical Information | Holding Capacities | Dimensions



Model	Max. Holding Capacity	Weight	EF:AF (pushing/pulling)	Plunger Travel	(M) Plunger Thread	Recommended Spindle (Not Supplied)
630					3/8-16	210203
630-SS						237943
630-M					M10	210203-M
630-MSS	[2500 lbf] 11100 N	[1.90 lb] 0,89 kg	36:1/23:1	[2.00] 50,8		237943-M
630-R					3/8-16	210203
630-RSS						237943
630-MR					M10	210203-M
630-MRSS						237943-M

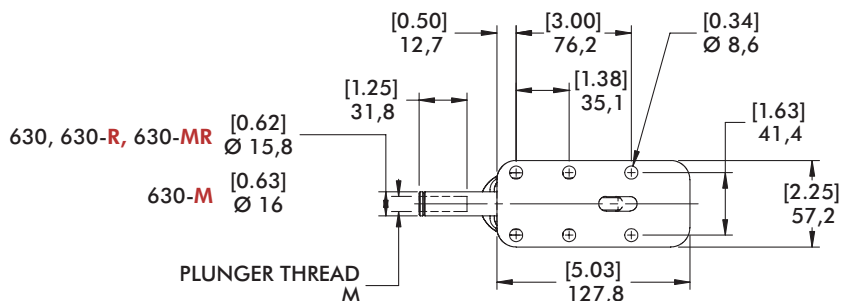
HC = Holding Capacity, EF = Exerting Force, AF = Applied Force

DESTACO® TOGGLE LOCK PLUS™ OPTION
(Engages in extended position only)



Color Handles
Available on models in this series.* Add -Y, -G, -B, -K to end of model number.

*Excludes Toggle Lock Plus levers or dipped handles.



640 SERIES

Straight Line Action Clamps | Product Overview

Features:

- For heavy duty push/pull clamping
- Longest stroke of our Straight Line Action Clamps
- Allow handle to rotate and fall below mounting plane to lock in retracted position
- Available with DESTACO® Toggle Lock Plus™
- 5 handle colors - see page MC-PRO-7 for details

Applications:

- Assembly & test
- Welding
- Tensioning devices

Also Available:

See page MC-ACC-1 for accessories

640
640-M



640-R
640-MR
with
DESTACO®
Toggle Lock
Plus™



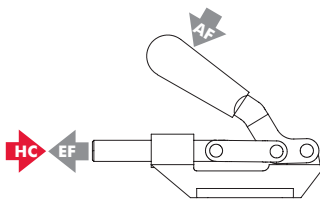
Color Handles

Available on models in this series.* Add -Y, -G, -B, -K to end of model number.

*Excludes Toggle Lock Plus levers.

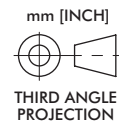
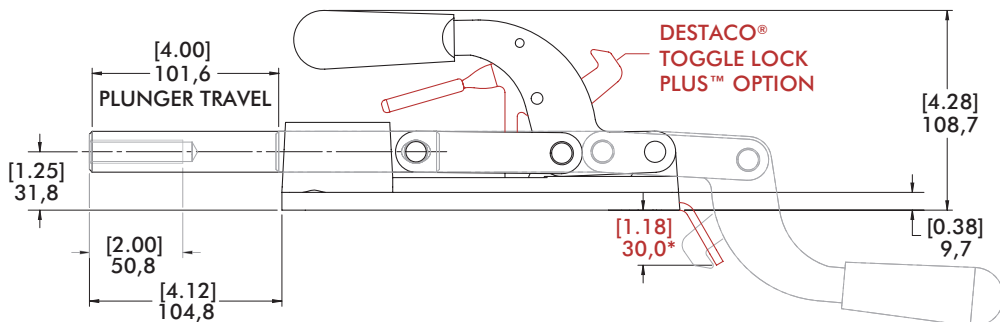
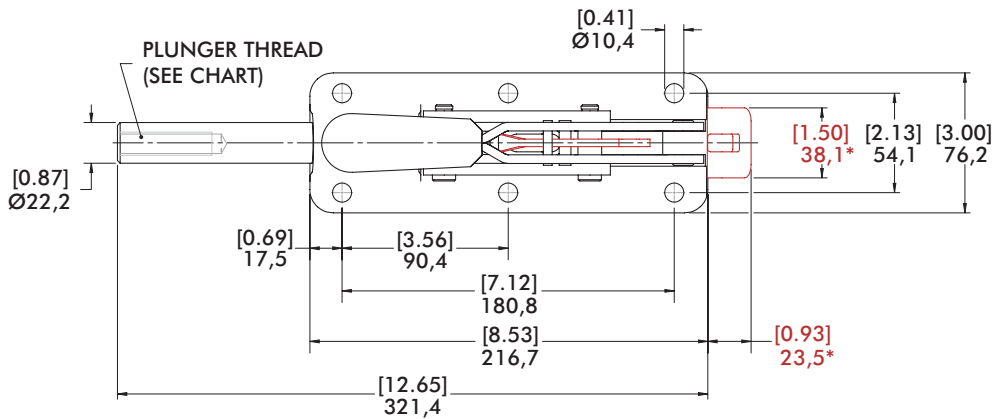


Technical Information | Holding Capacities | Dimensions



Model	Max. Holding Capacity	Weight	EF:AF (pushing)	Plunger Travel	(M) Plunger Thread	Recommended Spindle (Not Supplied)
640					1/2-13	220203
640-M	[7500 lbf] 33400 N	[6.78 lb] 3,08 kg	35:1	[4.00] 101,6	M12	220203-M
640-R					1/2-13	220203
640-MR					M12	220203-M

HC = Holding Capacity, EF = Exerting Force, AF = Applied Force



(*) Dimesions above in RED applies to the 640-R/640-MR only

Features:

- For heavy duty push/pull clamping
- Largest of our Straight Line Action Clamps
- Forged steel base and handle
- Allow handle to rotate and fall below mounting plane to lock in retracted position

Applications:

- Assembly
- Welding
- Staking, light presswork
- Tensioning devices

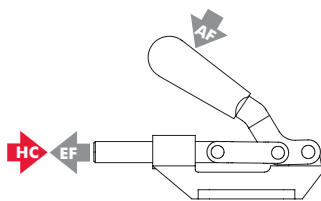
Also Available:

See page MC-ACC-1 for accessories

650
650-M

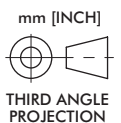
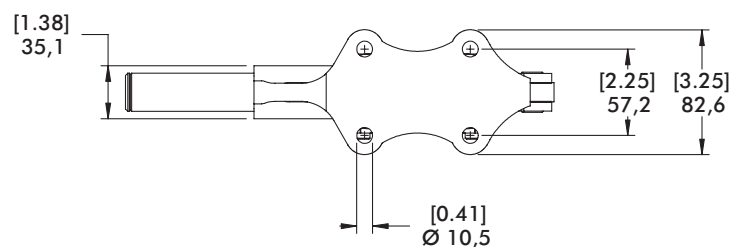
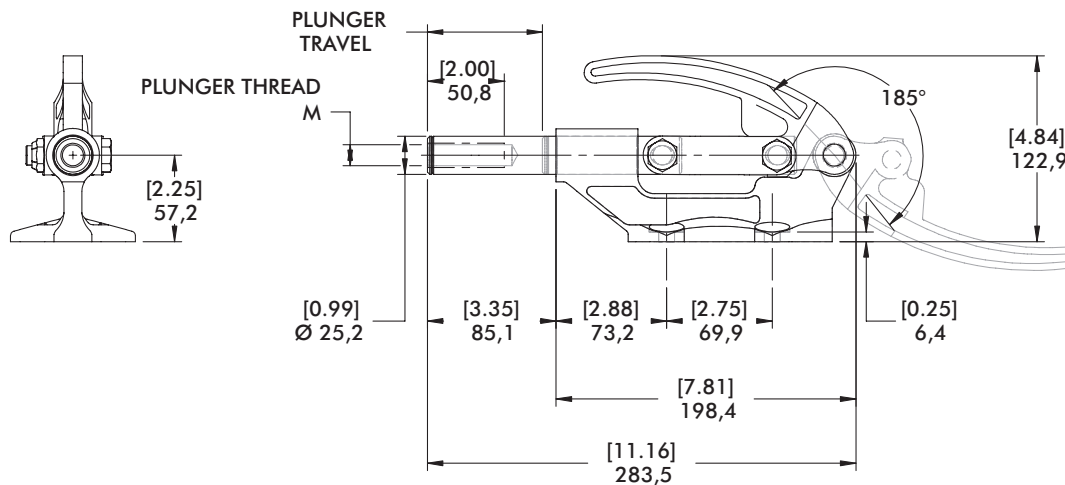


Technical Information | Holding Capacities | Dimensions



Model	Max. Holding Capacity	Weight	EF:AF (pushing)	Plunger Travel	(M) Plunger Thread	Recommended Spindle (Not Supplied)
650	[16000 lbf] 71200 N	[5.69 lb] 2,58 kg	25:1	[3.00] 76,6	5/8-11	250203
650-M					M16	250203-M

HC = Holding Capacity, EF = Exerting Force, AF = Applied Force



95030, 95040, 95050, 95060 SERIES

Straight Line Action Clamps | Product Overview

Features:

- Low profile with high holding capacities
- Cast steel base and handle
- Allow handle to rotate and fall below mounting plane to lock in retracted position

Applications:

- Assembly
- Testing
- Tensioning devices

Also Available:

See page MC-ACC-1 for accessories

95030

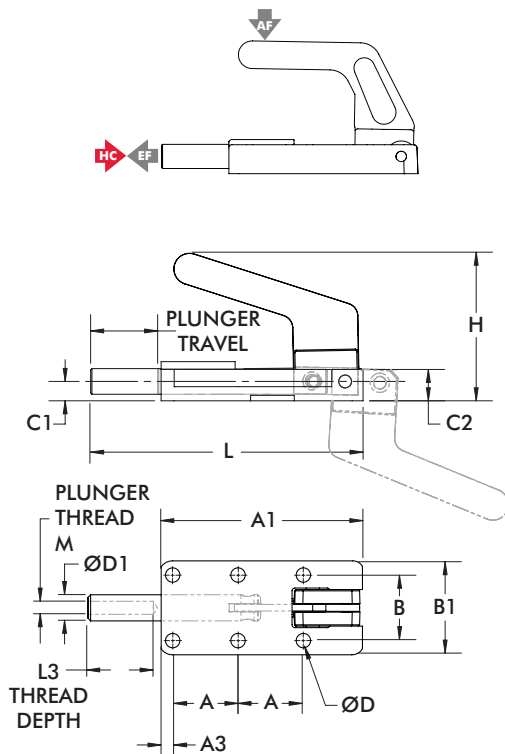
95040

95050 ⓘ

95060 ⓘ

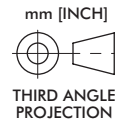


Technical Information | Holding Capacities



Model	Max. Holding Capacity	Weight	EF:AF (pushing)	Plunger Travel	(M) Plunger Thread	Recommended Spindle (Not Supplied)
95030	[550 lbf] 2450 N	[0.80 lb] 2,58 kg	15:1	[0.98] 24,9	M6	205203-M
95040	[1100 lbf] 4900 N	[1.60 lb] 0,73 kg	12:1	[1.50] 38,1	M8	207203-M
95050 ⓘ	[1650 lbf] 7340 N	[2.10 lb] 0,95 kg	15:1	[1.97] 50	M12	220203-M
95060 ⓘ	[3960 lbf] 17600 N	[6.4 lb] 2,9 kg	15:1	[2.36] 60		

ⓘ This item is available upon request
 HC = Holding Capacity, EF = Exerting Force, AF = Applied Force



Part No.	A	A1	A3	B	B1	C1	C2	ØD	ØD1	H	L	L3*
95030	[0.98] 25	[3.03] 77	[0.17] 4,4	[0.98] 25	[1.41] 35,9	[0.30] 7,5	[0.48] 12,2	[0.22] 5,5	[0.39] 10	[2.11] 53,7	[4.13] 105	[0.98] 25
95040	[1.38] 35	[4.29] 109	[0.31] 7,9	[1.38] 35	[2.00] 50,7	[0.39] 10	[0.72] 18,3	[0.26] 6,5	[0.55] 14	[3.03] 77	[5.87] 149,1	[1.38] 35
95050 ⓘ	[1.77] 45	[5.45] 138,5	[0.34] 8,7	[1.77] 45	[2.60] 66	[0.55] 14	[0.94] 23,8	[0.33] 8,5	[0.75] 19	[3.02] 76,7	[7.47] 189,8	[2.17] 55
95060 ⓘ	[2.17] 55	[6.57] 167	[0.40] 10,2	[2.17] 55	[3.03] 77	[0.63] 16	[1.08] 27,4	[0.41] 10,5	[0.87] 22	[3.69] 93,8	[9.02] 229	[2.56] 65

ⓘ This item is available upon request

*Minimum

5130, 5131, 5133 SERIES

Heavy-Duty Straight Line Action Clamps | Product Overview

Features:

- Reverse action allows the handle to stay out of the work zone
- Hardened steel pivot pins and bushings provide long life
- Black oxide finish with hardened plungers
- DESTACO® Toggle Lock Plus™ versions available

Applications:

- Welding fixtures
- Assembly fixtures
- Light machining

5130/-M
5131/-M
5133/-M
Flanged Base



5130-B/-MB
5131-B/-MB
5133-B/-MB
Solid Base



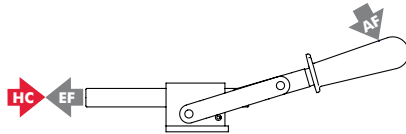
5130-R/-MR
5131-R/-MR
5133-R/-MR
Flanged Base with DESTACO® Toggle Lock Plus™



5130-BR①/-MBR①
5131-BR①/-MBR①
5133-BR①/-MBR①
Solid Base with DESTACO® Toggle Lock Plus™



Technical Information



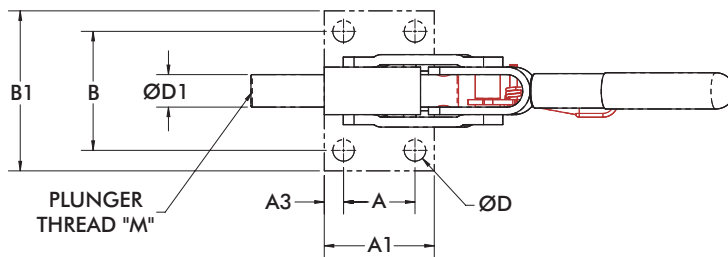
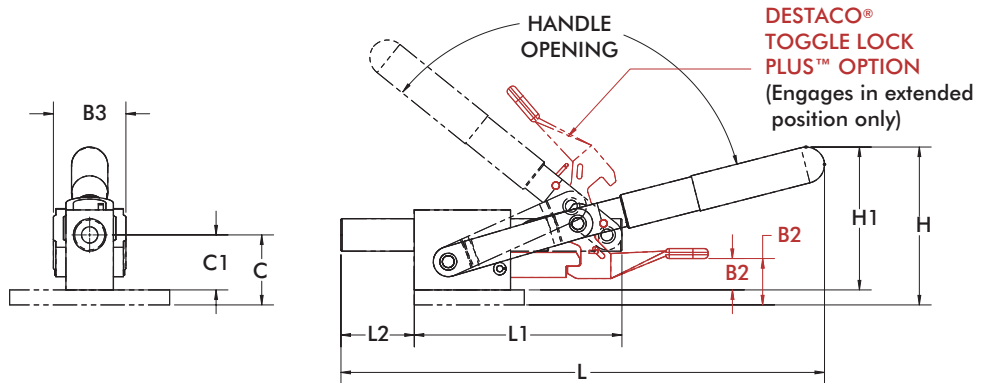
Model	Max. Holding Capacity	Weight	EF:AF (pushing)	Plunger Travel mm [in]	Handle Opening	Plunger Thread (M)	Recommended Spindle (not supplied)
5131	[2500 lbf] 11120 N	[1.12lbs] 0,51 kg	40:1	[1.00] 25,4	113°	5/16-18	461203
5131-M						M8	461203-M
5131-B		[0.85lbs] 0,39 kg				5/16-18	461203
5131-MB						M8	461203-M
5131-R		[1.15lbs] 0,52 kg				5/16-18	461203
5131-MR						M8	461203-M
5131-BR①		[0.88lbs] 0,40 kg				5/16-18	461203
5131-MBR①		M8	461203-M				
5130	[5800 lbf] 25800 N	[2.87lbs] 1,30 kg	40:1	[1.75] 44,5	125°	1/2-13	325203
5130-M						M12	220203-M
5130-B		[2.40lbs] 1,09 kg				1/2-13	325203
5130-MB						M12	220203-M
5130-R		[3.03lbs] 1,37 kg				1/2-13	325203
5130-MR						M12	220203-M
5130-BR①		[2.56lbs] 1,16 kg				1/2-13	325203
5130-MBR①		M12	220203-M				
5133	[4600 lbf] 20460 N	[3.12lbs] 1,41 kg	40:1	[3.18] 80,7	139°	1/2-13	325203
5133-M						M12	220203-M
5133-B		[2.65lbs] 1,20 kg				1/2-13	325203
5133-MB						M12	220203-M
5133-R		[3.36lbs] 1,52 kg				1/2-13	325203
5133-MR						M12	220203-M
5133-BR①		[2.89lbs] 1,31 kg				1/2-13	325203
5133-MBR①		M12	220203-M				

① This item is available upon request HC = Holding Capacity, EF = Exerting Force, AF = Applied Force

5130, 5131, 5133 SERIES

Heavy-Duty Straight Line Action Clamps | Dimensions

mm [INCH]
THIRD ANGLE PROJECTION



Model	A	A1	A3	B	B1	B2	B3	C	D	D1	H	L	L1	L2
5131						-								
5131-M	[1.13]	[1.73]	[0.30]	[1.87]	[2.52]		[1.14]	[1.10]	[0.34]	[0.51]	[2.49]	[7.61]	[3.27]	[1.15]
5131-R	28,6	44	7,7	47,6	64	[0.73]	29	28	8,6	13	63,1	193,4	83	29,3
5131-MR						18,5								
5130						-								
5130-M							[1.57]				[3.63]	[11.14]	[5.20]	[1.96]
5130-R						[1.07]	40				92,3	283	132	49,7
5130-MR	[1.75]	[2.52]	[0.38]	[2.31]	[2.99]	27,2		[1.38]	[0.41]	[0.75]				
5133	44,5	64	9,8	58,7	76			35	10,5	19				
5133-M						-								
5133-R							[1.54]				[3.84]	[13.05]	[6.58]	[3.24]
5133-MR						[1.24]	39				97,5	331,4	167	82,2

Model	B2	B3	C1	D1	H1
5131-B	-				
5131-MB		[1.14]	[0.87]	[0.51]	[2.25]
5131-BR ⓘ	[0.49]	29	22	13	57,1
5131-MBR ⓘ	12,4				
5130-B	-				
5130-MB		[1.57]			[3.40]
5130-BR ⓘ	[0.84]	40			86,3
5130-MBR ⓘ	21,2		[1.14]	[0.75]	
5133-B			29	19	
5133-MB		[1.54]			[3.60]
5133-BR ⓘ	[1.00]	39			91,5
5133-MBR ⓘ	25,4				

ⓘ This item is available upon request

5150 SERIES

Heavy-Duty Straight Line Action Clamps | Product Overview

Features:

- Square plunger provides positive radial location
- Reverse action allows the handle to stay out of the work zone
- Hardened steel pivot pins and bushings provide long life
- Black oxide finish with hardened plungers

Applications:

- Welding fixtures
- Assembly fixtures
- Light machining

5150/5150-M
Flanged Base



5150-B/5150-MB
Solid Base



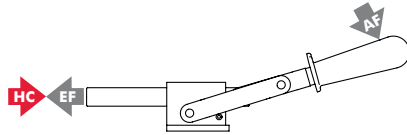
5150-R/5150-MR
Flanged Base with DESTACO® Toggle Lock Plus™



5150-BR①/5150-MBR①
Solid Base with DESTACO® Toggle Lock Plus™



Technical Information

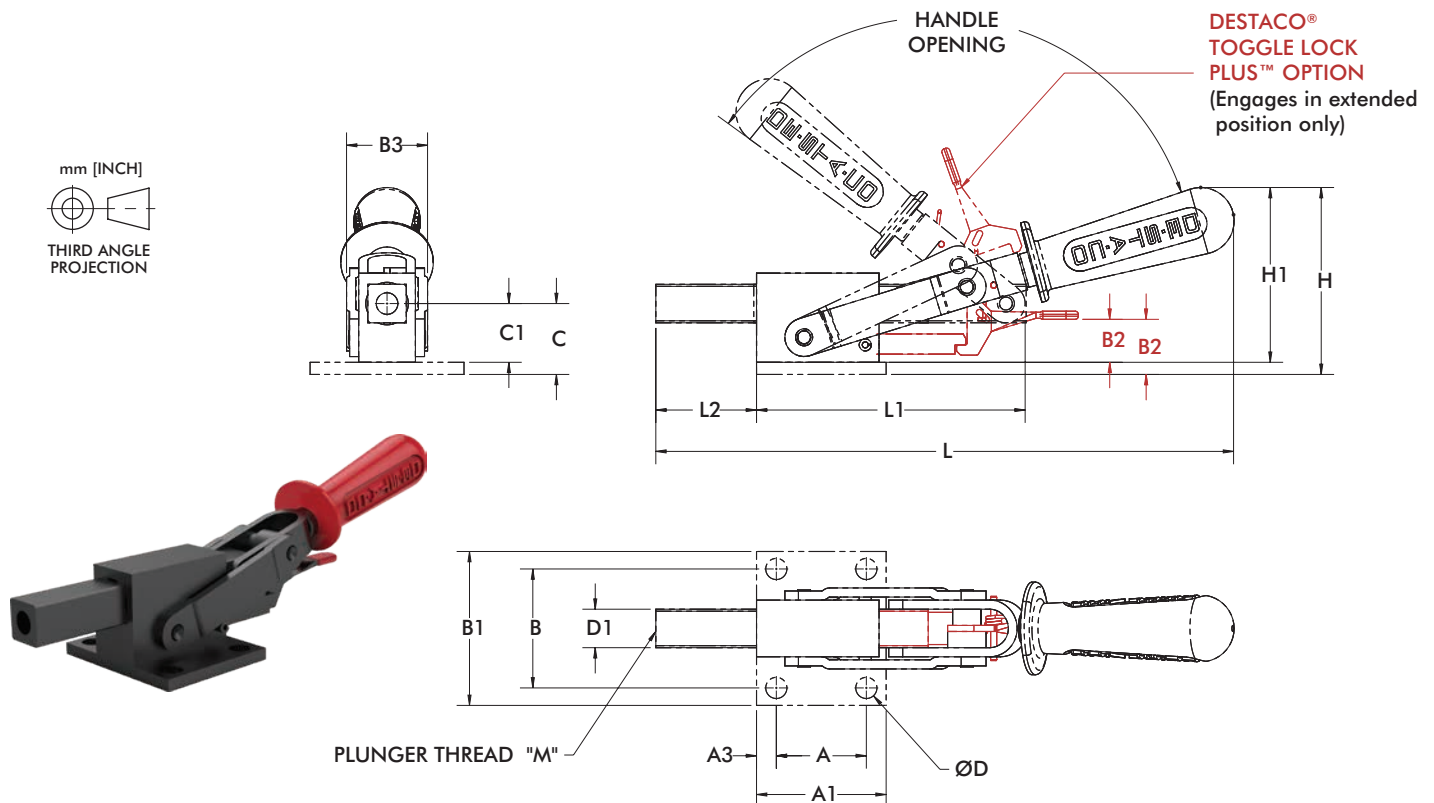


Model	Max. Holding Capacity	Weight	EF:AF (pushing)	Plunger Travel mm [in]	Handle Opening	Plunger Thread (M)	Recommended Spindle (not supplied)
5150	[5800 lbf] 25800 N	[3.00lbs] 1,36 kg	40:1	[1.91] 48,4	125°	1/2-13	325203
5150-M						M12	220203-M
5150-B		[2.50lbs] 1,13 kg				1/2-13	325203
5150-MB						M12	220203-M
5150-R		[3.15lbs] 1,43 kg				1/2-13	325203
5150-MR						M12	220203-M
5150-BR①		[2.68lbs] 1,22 kg				1/2-13	325203
5150-MBR①						M12	220203-M

① This item is available upon request HC = Holding Capacity, EF = Exerting Force, AF = Applied Force

5150 SERIES

Heavy-Duty Straight Line Action Clamps | Product Overview



Model	A	A1	A3	B	B1	B2	B3	C	C1	D	D1
5150	[1.75]	[2.52]	[0.38]	[2.31]	[2.99]			[1.57]	-	[0.41]	
5150-M	44,5	64	9,8	58,7	76			35	-	10,5	
5150-B	-	-	-	-	-			-	[1.14]	-	
5150-MB							[1.57]		29		[0.75]
5150-R	[1.75]	[2.52]	[0.38]	[2.31]	[2.99]	[1.07]	40	[1.57]	-	[0.41]	19
5150-MR	44,5	64	9,8	58,7	76	27,2		35	-	10,5	
5150-BR	-	-	-	-	-	[0.84]		-	[1.14]	-	
5150-MBR						21,2		-	29	-	

Model	H	H1	L	L1	L2	M
5150	[3.63]	-				1/2-13
5150-M	92,3	-				M12
5150-B	-	[3.40]				1/2-13
5150-MB		86,3	[11.23]	[2.86]	[1.96]	M12
5150-R	[3.63]	-	285,3	72,6	49,7	1/2-13
5150-MR	92,3	-				M12
5150-BR ⓘ	-	[3.40]				1/2-13
5150-MBR ⓘ		86,3				M12

ⓘ This item is available upon request

602, 604, 624 SERIES

Straight Line Action Clamps | Product Overview

Features:

- Versatile and compact straight line action clamps
- Threaded body for through hole mounting
- Stainless Steel **-SS** models available
- Toggle Lock Plus™ **-R** versions available (604, 624 only)
- 5 handle colors - see page MC-PRO-7 for details

Applications:

- Assembly
- Checking fixtures
- Welding fixtures
- Tensioning devices

Also Available:

See page MC-ACC-1 for accessories

602
602-SS
602-MM
602-MMSS



604
604-SS
604-MM
604-MMSS ⓘ



624
624-SS
624-MM
624-MMSS ⓘ



Color Handles
Available on models in this series. Add **-Y, -G, -B, -K** to end of model number.

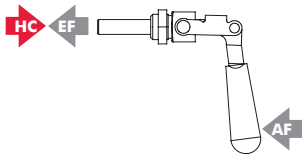
604-R
604-RSS
604-MMR
604-MMRSS
with DESTACO®
Toggle Lock Plus™



624-R
624-RSS
624-MMR
624-MMRSS
with DESTACO®
Toggle Lock Plus™



Technical Information | Holding Capacities | Dimensions



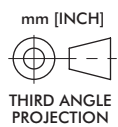
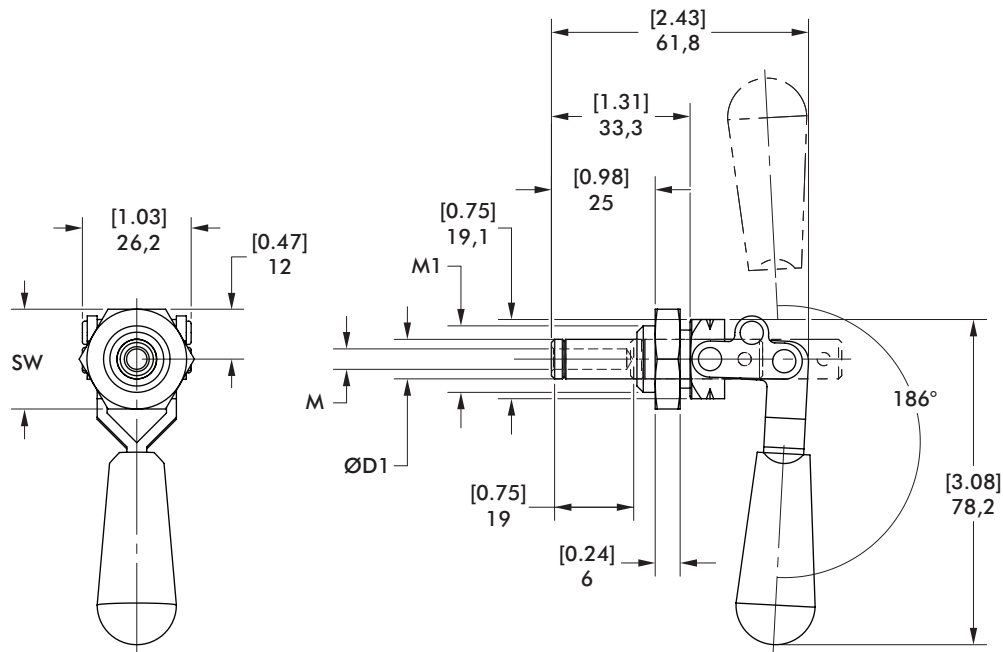
Model	Max. Holding Capacity	Weight	EF:AF (pushing/pulling)	Plunger Travel	Plunger Thread	Spindle (Recommended)	Mounting Nut (Supplied)
602					1/4-20	205203	602105
602-SS	[200 lbf] 900 N	[0.12 lb] 0,05 kg	31:1/28:1	[0.75] 19	M6	202943	602905
602-MM						205203-M	602105-M
602-MMSS						202943-M	602905-M
604	[300 lbf] 1330 N				5/16-18	207203	606104
604-R						--	606904
604-SS	[400 lbf] 1780 N	[0.44 lb] 0,20 kg	45:1/26:1	[1.50] 38	M8	207943	606104-M
604-RSS						207943-M (included)	606904-M
604-MM	[300 lbf] 1330 N						
604-MMR							
604-MMSS ⓘ	[400 lbf] 1780 N						
604-MMRSS							
624					3/8-16	210203	624105
624-R						--	624905
624-SS					M10	237943 (included)	624905
624-RSS	[700 lbf] 3110 N	[1.63 lb] 0,74 kg	49:1/21:1	[2.63] 66		210203-M	624105-M
624-MM							
624-MMR							
624-MMSS							
624-MMRSS						237943-M	624905-M

ⓘ This item is available upon request HC = Holding Capacity, EF = Exerting Force, AF = Applied Force

602 SERIES

Straight Line Action Clamps | Dimensions | -SS/-MM/-MMSS

602
602-SS
602-MM
602-MMSS



Modell	ØD1	M	M1	SW
602	10 [0.39]	1/4-20	5/8-18	[0.88] 22,2
602-SS	9,5 [0.37]			
602-MM	10 [0.39]	M6	M16x1.5	[0.94] 24
602-MMSS	10 [0.39]			

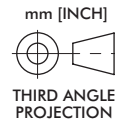
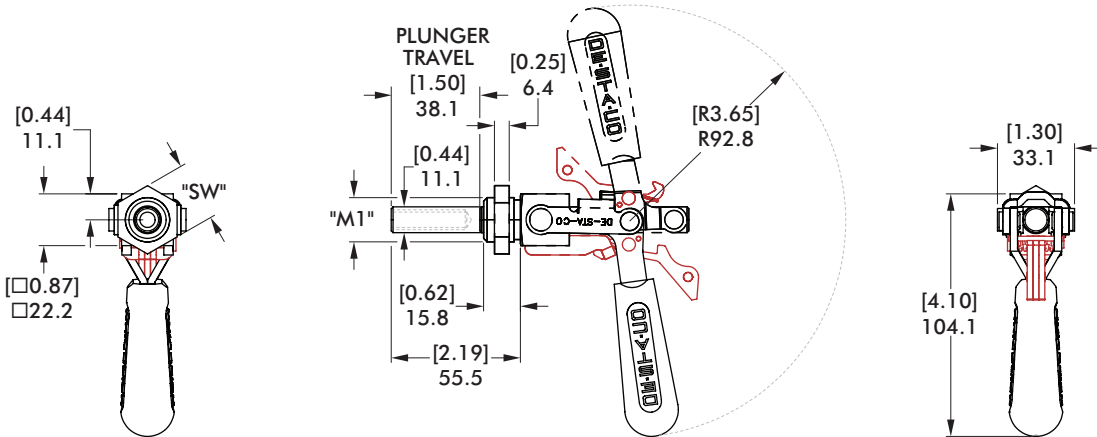
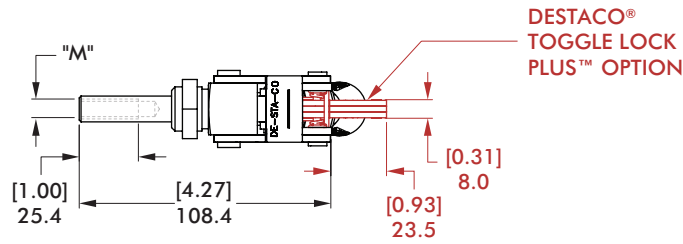
604 SERIES

Straight Line Action Clamps | Dimensions | -SS/-MM/-MMSS/-R/-RSS/-MMR/-MMRSS

604
604-SS
604-MM
604-MMSS^①



604-R
604-RSS
604-MMR
604-MMRSS
with DESTACO[®]
Toggle Lock Plus[™]



Model no.	M	M1	SW
604			
604-SS			[1.00] 25,4
604-R	5/16-18	3/4-16	
604-RSS			
604-MM			
604-MMSS			[1.18] 30
604-MMR	M8	M20x1.5	
604-MMRSS			

624 SERIES

Straight Line Action Clamps | Dimensions | -SS/-MM/-R/-RSS/-MMR/-MMRSS

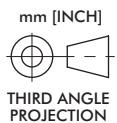
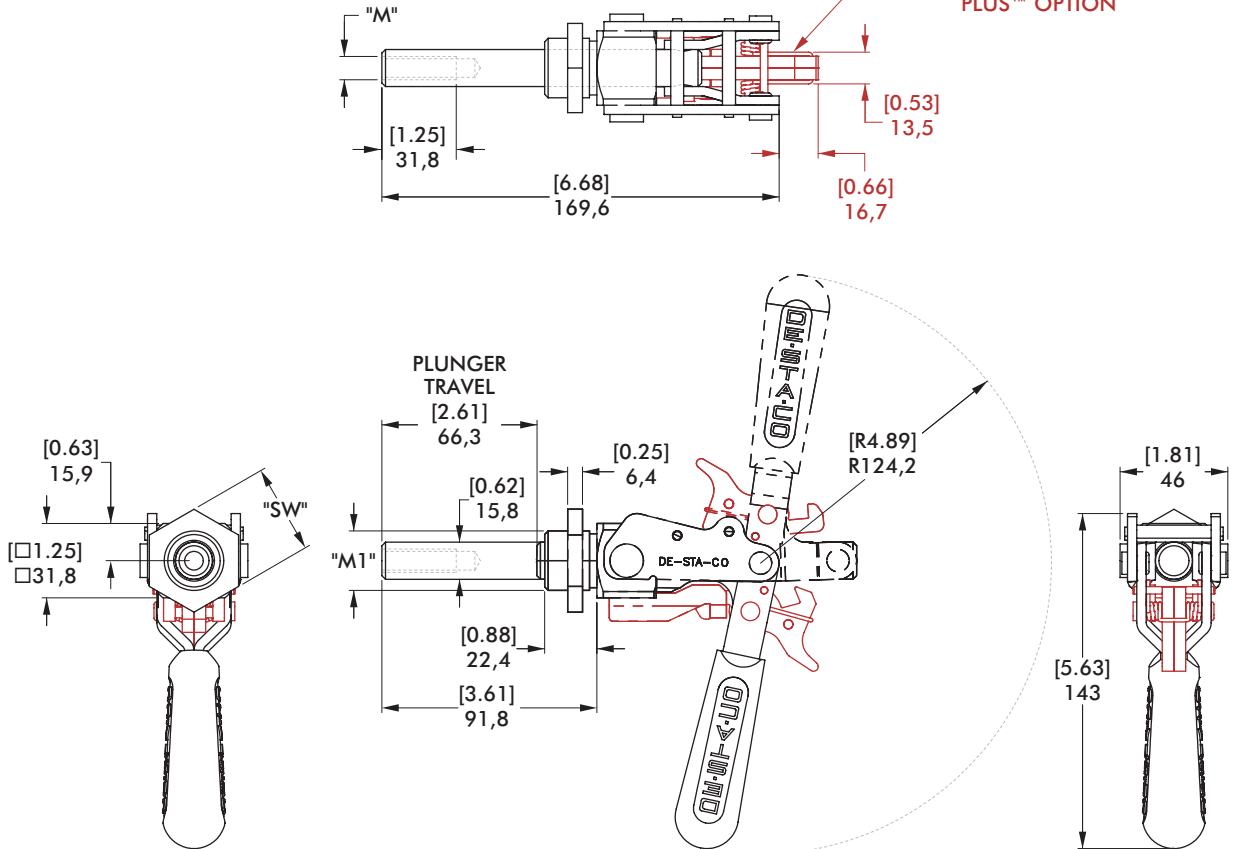
624
624-SS
624-MM
604-MMSS^①



624-R
624-RSS
624-MMR
624-MMRSS
with DESTACO®
Toggle Lock Plus™



DESTACO®
TOGGLE LOCK
PLUS™ OPTION



Model no.	M	M1	SW
624			
624-SS	3/8-16	1-14	[1.50] 38,1
624-R			
624-RSS			
624-MM			
624-MMSS	M10	M27x2	[1.61] 41
624-MMR			
624-MMRSS			

6002, 6004, 6024 SERIES

Straight Line Action Clamps | Product Overview

Features:

- Similar size to the 602/604/624 Series with solid body
- 2-3 times more holding capacity than 602/604/624 in a similar envelope size
- Mounts through a hole or in a tapped hole
- Toggle Lock Plus™ -R versions available
- Stainless Steel -SS versions available
- Locks over center in the extended/retracted position
- 5 handle colors - see page MC-PRO-7 for details

Covered under one or more U.S./International Patents

Applications:

- Assembly
- Checking fixtures
- Welding fixtures
- Tensioning devices

Also Available:

See page MC-ACC-1 for accessories



Color Handles Available on models in this series. Add -Y, -G, -B, -K to end of model number.

6002/-SS
6002-MM/-MMSS



6004/-SS
6004-MM/-MMSS



6024/-SS
6024-MM/-MMSS



6002-R/-RSS
6002-MMR/-MMRSS
with DESTACO® Toggle Lock Plus™



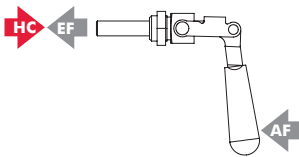
6004-R/-RSS
6004-MMR/-MMRSS
with DESTACO® Toggle Lock Plus™



6024-R/-RSS
6024-MMR/-MMRSS
with DESTACO® Toggle Lock Plus™



Technical Information | Holding Capacities | Dimensions



Model	Max. Holding Capacity	Weight	EF:AF (pushing)	Plunger Travel	(M) Plunger Thread	Spindle (Recommended)	Mounting Nut (Supplied)				
6002	[400 lbf] 1780 N	[0.44 lb] 0.2 kg	20:1	[0.75 in] 19 mm	1/4-20	205203	602105				
6002-SS						202943	602905				
6002-MM						M6	205203-M	602105-M			
6002-MMSS							202943-M	602905-M			
6002-R		[0.55 lb] 0.25 kg			[0.90 lb] 0.41 kg	14.4:1	[1.50 in] 38 mm	1/4-20	205203	602105	
6002-RSS									202943	602905	
6002-MMR									M6	205203-M	602105-M
6002-MMRSS										202943-M	602905-M
6004	[600 lbf] 2670 N	[0.73 lb] 0.33 kg	21:1	[2.60 in] 66 mm	5/16-18			207203	606104		
6004-SS								207943	606904		
6004-MM								M8	207203-M	606104-M	
6004-MMSS									207943-M	606904-M	
6004-R		[0.90 lb] 0.41 kg			[3.53 lb] 1.6 kg	14.4:1	[2.60 in] 66 mm	5/16-18	207203	606104	
6004-RSS									207943	606904	
6004-MMR									M8	207203-M	606104-M
6004-MMRSS										207943-M	606904-M
6024	[2100 lbf] 9340 N	[3.17 lb] 1.44 kg	21:1	[2.60 in] 66 mm	3/8-16			210203	624105		
6024-SS								237943	624905		
6024-MM								M10	210203-M	624105-M	
6024-MMSS									237943-M	624905-M	
6024-R		[3.53 lb] 1.6 kg			[3.53 lb] 1.6 kg	21:1	[2.60 in] 66 mm	3/8-16	210203	624105	
6024-RSS									237943	624905	
6024-MMR									M10	210203-M	624105-M
6024-MMRSS										237943-M	624905-M

HC = Holding Capacity, EF = Exerting Force, AF = Applied Force

6002, 6004, 6024 SERIES

Straight Line Action Clamps | Dimensions | -MM/-R/-MMR

6002/-SS
6002-MM/-MMSS



6002-R/-RSS
6002-MMR/-MMRSS
with DESTACO® Toggle
Lock Plus™

6004/-SS
6004-MM/-MMSS

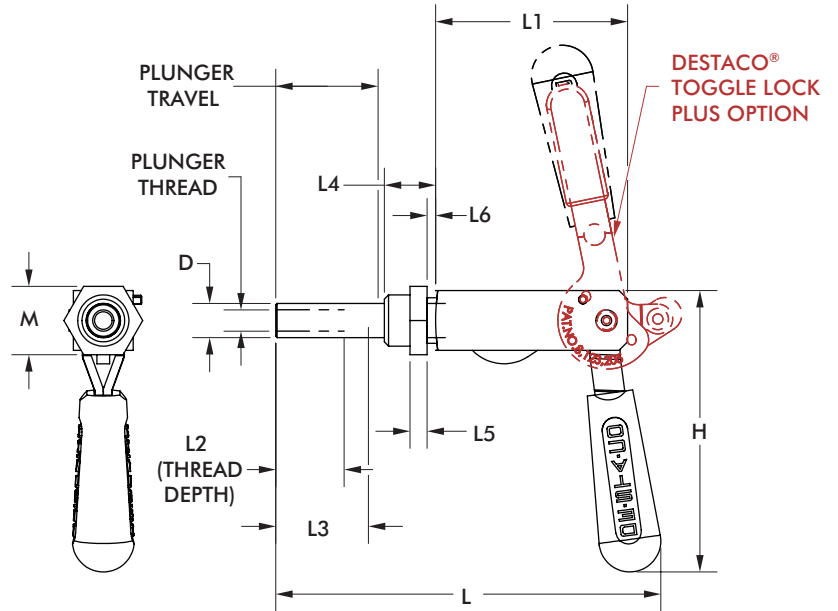
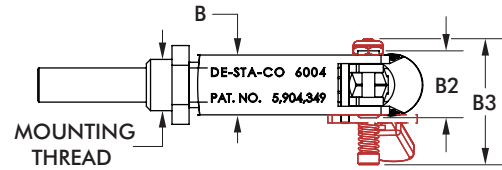
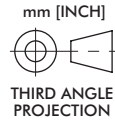


6004-R/-RSS
6004-MMR/-MMRSS
with DESTACO® Toggle
Lock Plus™

6024/-SS
6024-MM/-MMSS



6024-R/-RSS
6024-MMR/-MMRSS
with DESTACO® Toggle
Lock Plus™



Model	B	B2	B3	H	L	L1	L2	L3	L4	L5	L6	D	M	Plunger Thread	Mounting Thread
6002														1/4-20	5/8-18
6002-SS		[0.98]	--												
6002-MM		25.0												M6	M16x1.5
6002-MMSS	[0.89]			[3.11]	[3.37]	[1.93]	[0.79]	--	[0.63]	[0.25]	[0.12]	[0.39]	[0.87]		
6002-R	22.5			79.1	85.6	49.0	20.0		15.9	6.4	3.0	10.0	22.2	1/4-20	5/8-18
6002-RSS		--	[1.87]												
6002-MMR			47.4											M6	M16x1.5
6002-MMRSS															
6004														5/16-18	3/4-16
6004-SS		[0.98]	--	[4.11]	[5.63]										
6004-MM		24.8		104.5	143.1									M8	M20x1,5
6004-MMSS	[0.75]					[2.81]	[1.00]	[1.35]	[0.75]	[0.25]	[0.13]	[0.50]	[1.00]		
6004-R	19.1					71.4	25.4	34.4	19.1	6.4	3.2	12.7	25.4	5/16-18	3/4-16
6004-RSS		--	[1.84]	[4.52]	[5.69]										
6004-MMR			46.8	114.7	144.5									M8	M20x1,5
6004-MMRSS															
6024														3/8-16	1-14
6024-SS		[2.37]	--												
6024-MM		60.3												M10	M27x2
6024-MMSS	[1.63]			[5.67]	[8.37]	[4.63]	[1.50]	--	[1.06]	[0.25]	[0.11]	[0.63]	[1.50]		
6024-R	41.3			144.0	212.6	117.5	38.0		26.9	6.4	2.9	16.0	38.1	3/8-16	1-14
6024-RSS		--	[3.25]												
6024-MMR			82.6											M10	M27x2
6024-MMRSS															

602, 604, 624, 6002, 6004, 6024 SERIES

Straight Line Action Clamps | Mounting Plates

Features:

- Mounting accessories for Threaded Body Straight Line Action Clamps

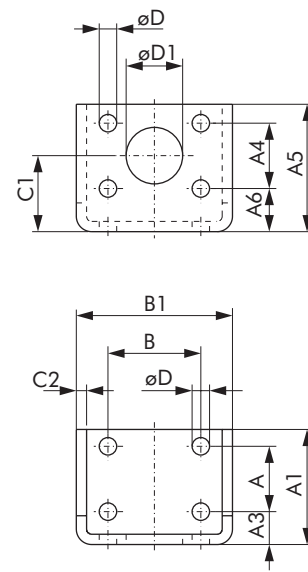
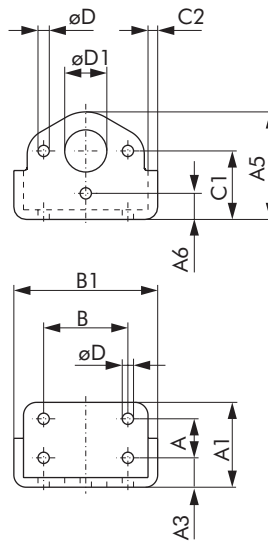
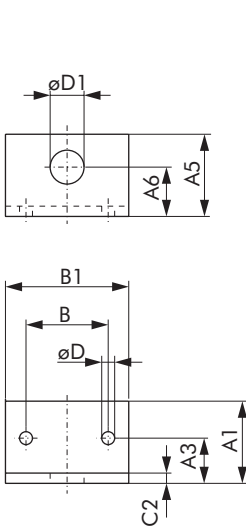
602106-M



604106,
604106-M



624106-M



Item Number	For Use With	A	A1	A3	A4	A5	A6	B	B1	C1	C2	D	D1
602106-M	602, 602-MM 6002, 6002-MM	--	[1.57] 40	[0.87] 22	--	[1.57] 40	[0.94] 24	[1.57] 40	[2.36] 60	--	[0.20] 5	[0.25] 6,3	[0.65] 16,5
604106	604, 6004	[0.75] 19,1	[1.60] 40,6	[0.55] 14	--	[2.05] 52,1	[0.50] 12,7	[1.62] 41,1	[2.80] 71,1	[1.30] 33	[0.19] 4,7	[0.22] 5,6	[0.75] 19,1
604106-M	604-MM, 6004-MM												[0.81] 20,5
624106-M	624, 624-MM 6024, 6024-MM	[1.25] 31,8	[2.20] 56	[0.63] 16	[1.25] 31,8	[2.44] 62	[0.83] 21	[1.78] 45,2	[2.99] 76	[1.46] 37	[0.20] 5	[0.33] 8,5	[1.08] 27,5

614 SERIES

Straight Line Action Clamps | Product Overview

Features:

- Single hole threaded mount or side mount
- Precision hardened and ground plunger is designed for anti-rotation under torsional loads
- Locks in the extended or retracted position, internal locking in the push direction
- 5 handle colors - see page MC-PRO-7 for details

Applications:

- Assembly
- Checking fixtures
- Locaters and positioners

Also Available:

See page MC-ACC-1 for accessories

614-M



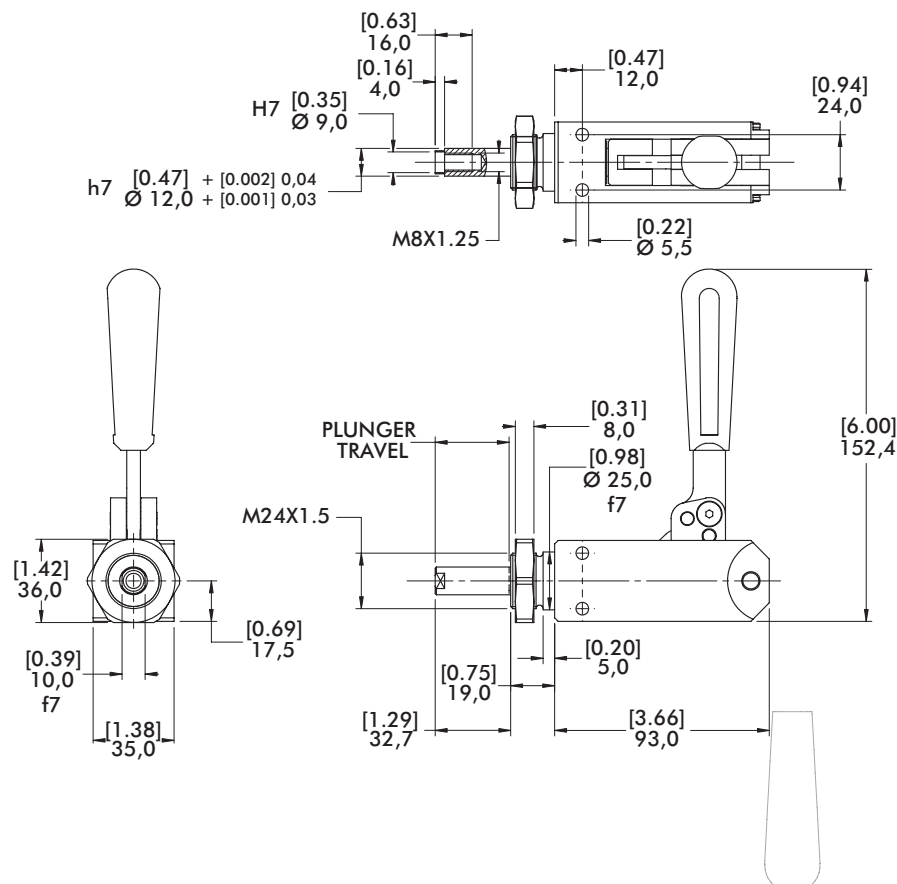
Color Handles

Available on this model.
Add -Y, -G, -B, -K to
end of model number.



Technical Information | Holding Capacities | Dimensions

Model	Max. Holding Capacity	Weight	Plunger Travel	Plunger Thread	Mounting Nut (Supplied)
614-M	[1125 lbf] 5000 N	[1.81 lb] 0,82 kg	[1.26] 32	M8	614-1-10



670, 675, 690, 695 SERIES

Straight Line Action Clamps | Product Overview

Features:

- Precision clamping for high production
- Adjustable collet-type bushing minimizes radial plunger movement
- Plunger has a flat surface for anti rotation
- Pre-load nut and hold open device included

Applications:

- Assembly
- Welding

670-1MBPLS



675-1MBPLS



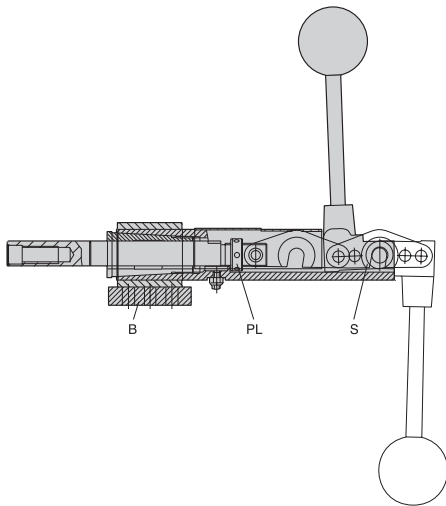
690-1MBPLS



695-1MBPLS ⓘ



Series 670, 675, 690, 695 Technical Information | Holding Capacities



Model	Max. Holding Capacity	Weight	Plunger Travel	Plunger Thread
670-1MBPLS	[2400 lbf] 10680 N	[4.2 lb] 1,91 kg	[2.25] 57,2	M12
675-1MBPLS		[4.0 lb] 1,81 kg	[1.10] 28	
690-1MBPLS	[5000 lbf] 22240 N	[8.2 lb] 3,72 kg	[3.00] 76,2	M16
695-1MBPLS ⓘ		[7.2 lb] 3,27 kg	[1.50] 38,1	

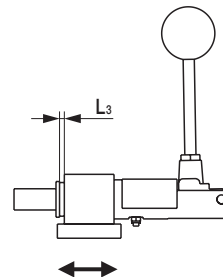
ⓘ This item is available upon request

The unique feature of these clamps is the collet-type bushing that can be adjusted to eliminate plunger end movement after long repeated use. The plunger also has a flat which prevents lateral movement and allows offset piloting and holding. The plunger is drilled and tapped for threaded spindles or custom fixturing.

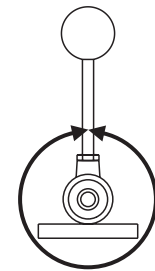
The adjustable pre-load nut (PL) can be used to lock the clamp against itself when not under pressure and therefore prevent opening when mounted vertically. The spring hold-open device (S) prevents the clamp from accidentally closing.

The mounting base (B) is supplied disassembled with the four models, to enable welding the base and the main assembly in any handle position.

Series 675 and 695 (shorter stroke) reach the over-center position only when clamping. Series 670 and 690 (longer stroke) lock in both the extended and retracted position.



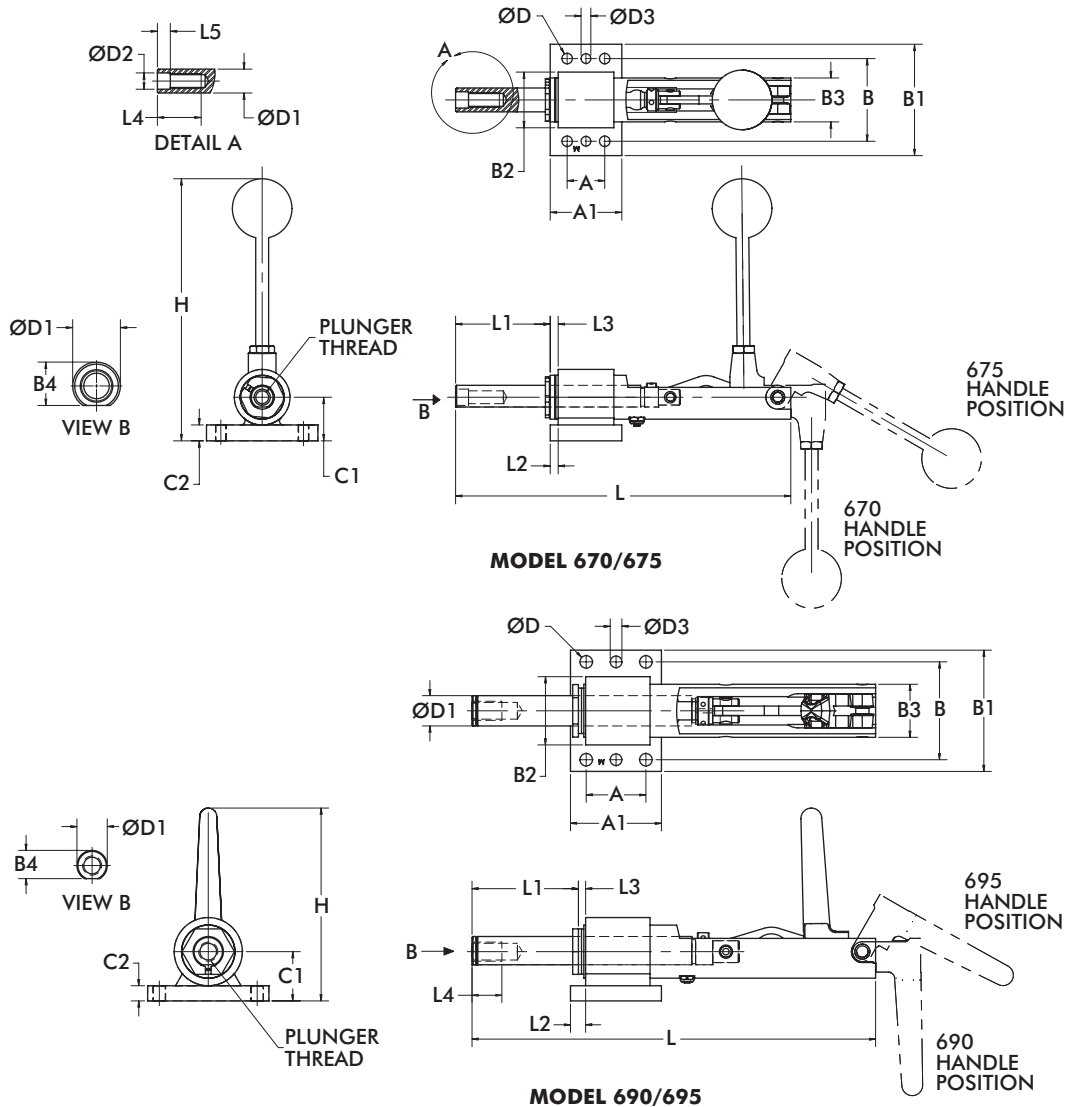
Welding range L_3 axial
0-8mm [0-0.31in.]



Welding range radial 360°

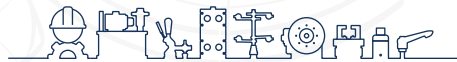
670, 675, 690, 695 SERIES

Straight Line Action Clamps | Dimensions



Model	A	A1	B	B1	B2	B3	B4	C1	C2	D	D1	D2H7	D3
670-1MBPLS	[1.18]	[2.24]	[2.60]	[3.50]	[1.75]	[1.38]	[0.68]	[1.37]	[0.50]	[0.33]	[0.75]	[0.51]	[0.31]
675-1MBPLS	30	57	66	89	44,5	35	17,3	34,8	12,7	8,4	19	13	7,8
690-1MBPLS	[1.97]	[3.00]	[3.23]	[4.00]	[2.25]	[1.75]	[0.93]	[1.63]	[0.50]	[0.41]	[1.00]	--	[0.39]
695-1MBPLS	50	76,2	82	101,6	57,2	44,4	23,7	41,3	12,7	10,5	25,4	--	9,8

Model	H	L	L1	L2	L3	L4	L5
670-1MBPLS	[8.11]	[10.55]	[2.97]	[0.25]	[0-0.31]	[1.38]	[0.41]
675-1MBPLS	206	[7.68]	[1.74]	6,4	0-8	35	10,3
690-1MBPLS	[6.37]	[13.31]	[3.69]	[0.50]	[0-0.31]	[0.98]	--
695-1MBPLS	162	[9.45]	[2.25]	[0.38]	0-8	25	--
		240	57,2	9,5			



inf @ /CESEHSA.com.mx

