

Standard Hook Pin Clamps

01/28/2025



info@cesehsa.com.mx

cesehsa.com.mx



Standard Hook Pin Clamps

01/28/2025

This catalog is a custom document and the products included is based on your unique selection from portions of complete catalogs that already exist. Please refer to our full catalogs for more information on products not included in this customized document.

Table of Contents

Standard Hook Pin Clamps

PC-HPC-1

Standard Hook Pin Clamps

01/28/2025

Table of Contents (continued)

82P25-2

Pneumatic Pin Clamp | Ordering and Technical Information

82P25-2 - 00 D8 XX

| Size | Description |
|---------|---|
| 82P25-2 | 25 mm Cylinder (G1/8 and NPT 1/8 Ports) |

| Tip | Description |
|-------|---|
| 00 | without centering pin |
| 08-22 | with customer specified round centering pin from Ø8-22 mm |

| Serial Number | Description |
|---------------|--|
| XX | Customer specified Base, Clamping Hook and Centering Pin <i>Must contact factory with specifications to complete order number</i> |

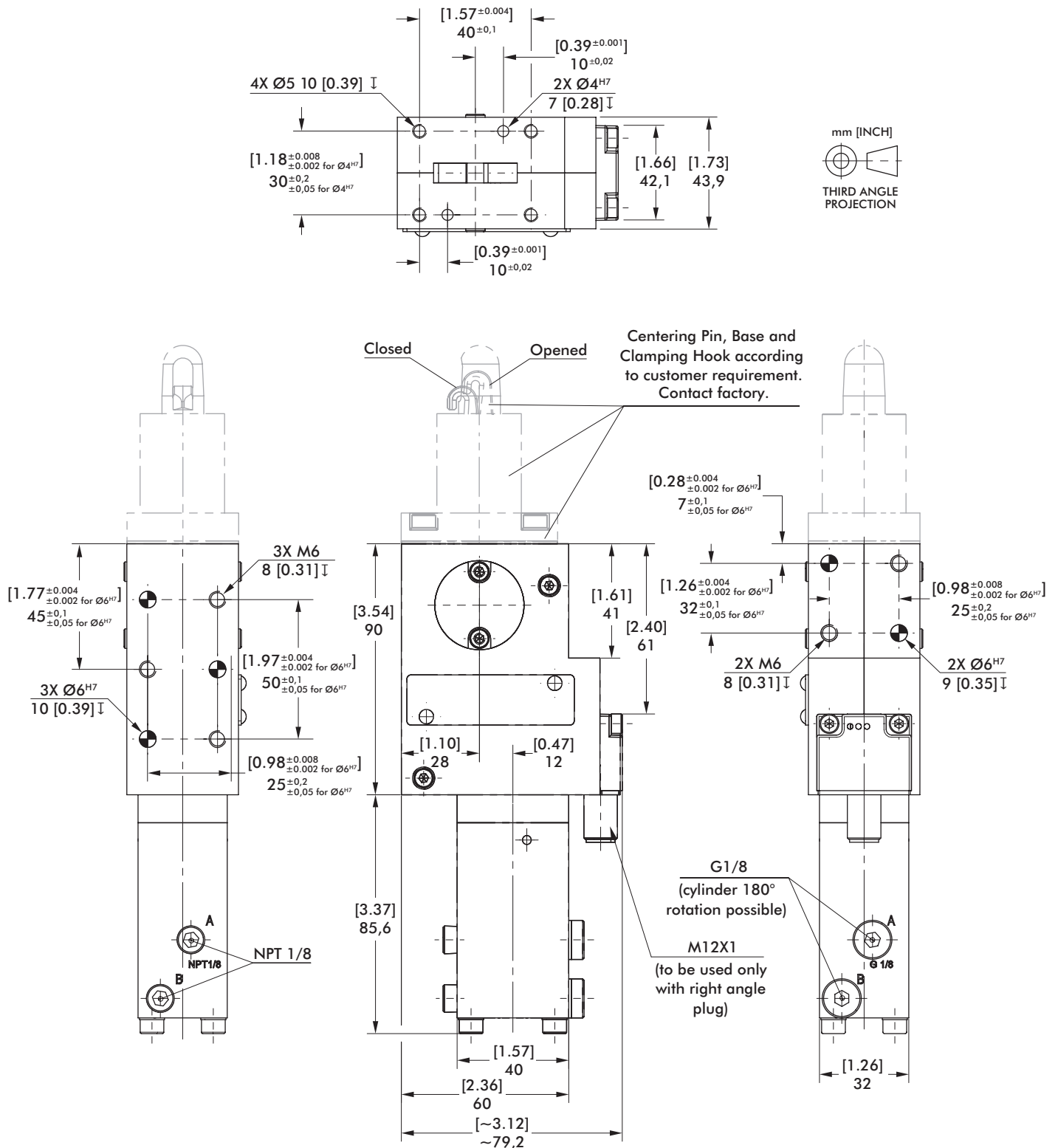


| Sensor | Description |
|--------|---|
| D8 | Inductive Sensing System with M12x1 Connector (8EA-161-1) |



82P25-2XX

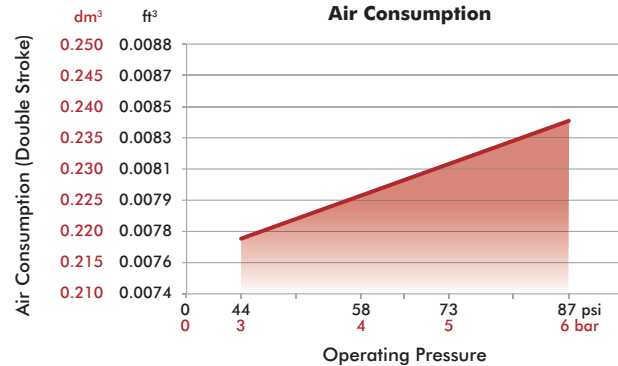
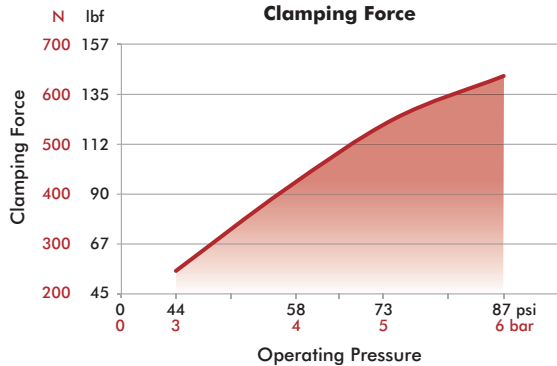
| Specification | Unit | 82P25-2 |
|---|-----------------------------|-----------------|
| Max. Clamping Force @ 5 bar | [lbf] N | [124] 550 |
| Max. Operating Pressure | bar [psi] | [87] 6 |
| Piston Diameter | [in] mm | [1.57] 40 |
| Air Consumption per Double Stroke @ 6 bar [87psi] | [in ³] liter | [15.26] 0,25 |
| Weight | [lb] kg | [2.07] 0,94 |



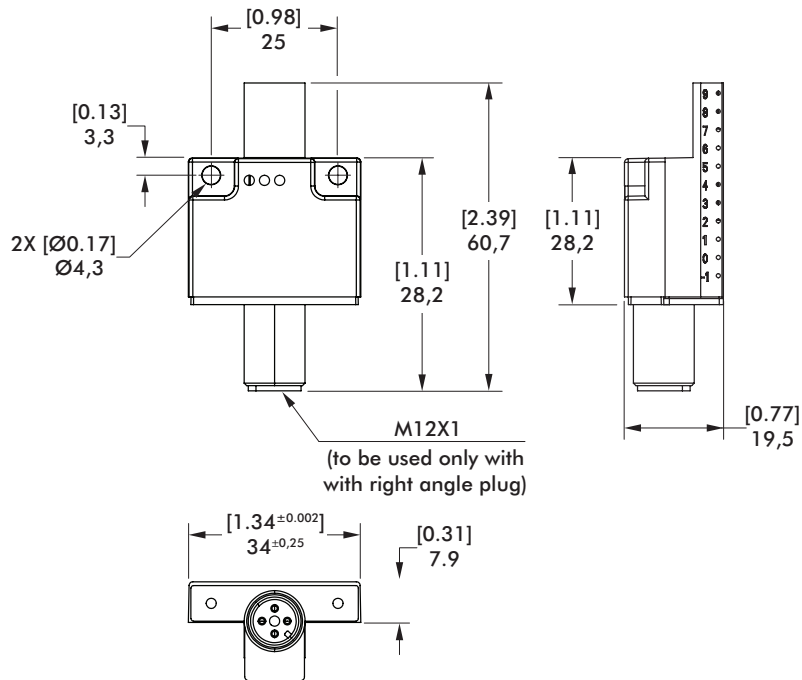
82P25-2 SENSORS

Pneumatic Pin Clamp | Dimensions and Technical Specifications

Clamping Force and Air Consumption

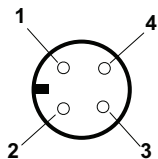


D8 Inductive Sensing System



Inductive Sensor Wiring Diagram

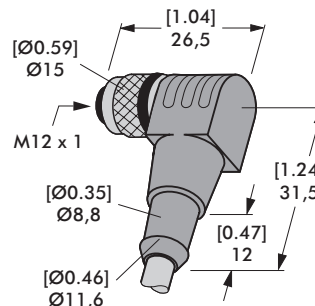
Sensing system immune to interference from AC / DC arc welding.



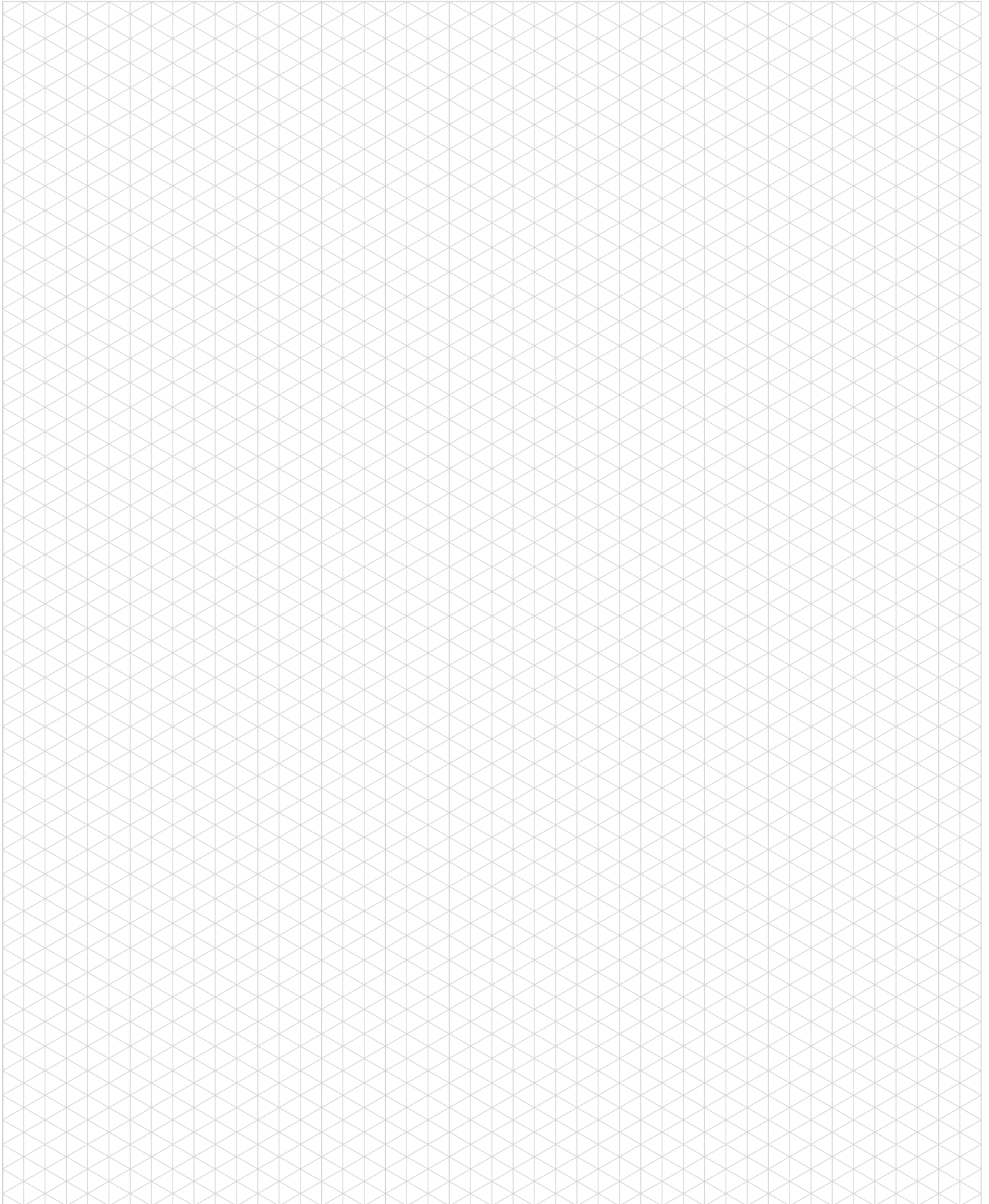
1-Common +
2-Open
3-Common -
4-Closed

Sensor Cable Accessories

| Sensor Cables (1 connector & 5m cable) | Order no. |
|--|-----------|
| M12x1 connector, 90° angular, 4-pin | 8EL-003-1 |



Angular Cable
8EL-003-1



82P30-3/82P35-3

Pneumatic Pin Clamp | Ordering and Technical Information



| Size | Description |
|------|----------------------------|
| 30-3 | 30 mm Cylinder (G1/8 Port) |
| 35-3 | 35 mm Cylinder (G1/8 Port) |

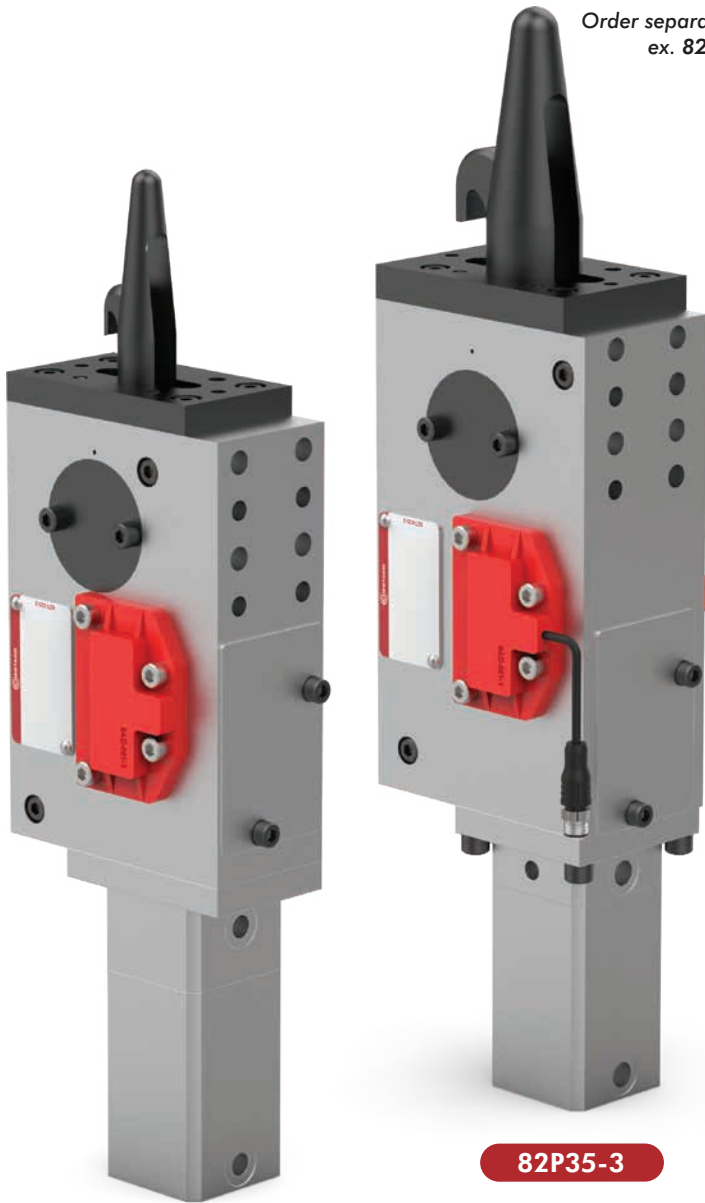
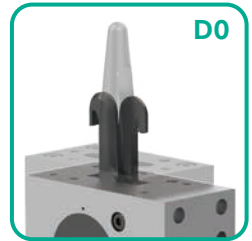
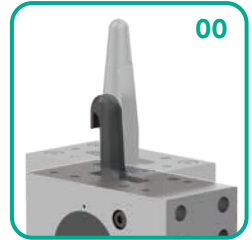
| Centering Pin | Ø Range for 82P30-3 |
|---------------|---------------------|
| 20 | 20,0 - 23,0 mm |
| 25 | 23,1 - 28,0 mm |
| 30 | 28,1 - 33,0 mm |

| | Ø Range for 82P35-3 |
|----|---------------------|
| 40 | 33,1 - 45,0 mm |

Order separately. 82P3X-3XX-XX,X
ex. 82P30-320-21,1



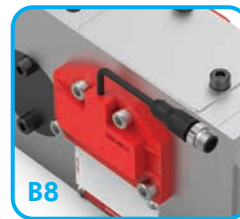
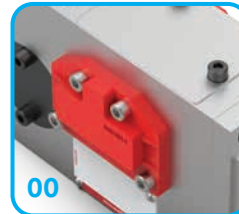
| Clamping Hook | Description |
|---------------|------------------------|
| 00 | Single Hook (Standard) |
| D0 | Double Hook |



82P30-3

82P35-3

| Sensor | Description |
|--------|---|
| 00 | Without Sensing System |
| C0 | Inductive Sensing System with M8x1 Connector (8EA-012-2) |
| B8 | Inductive Sensing System with M12x1 Connector (8EA-030-1) |

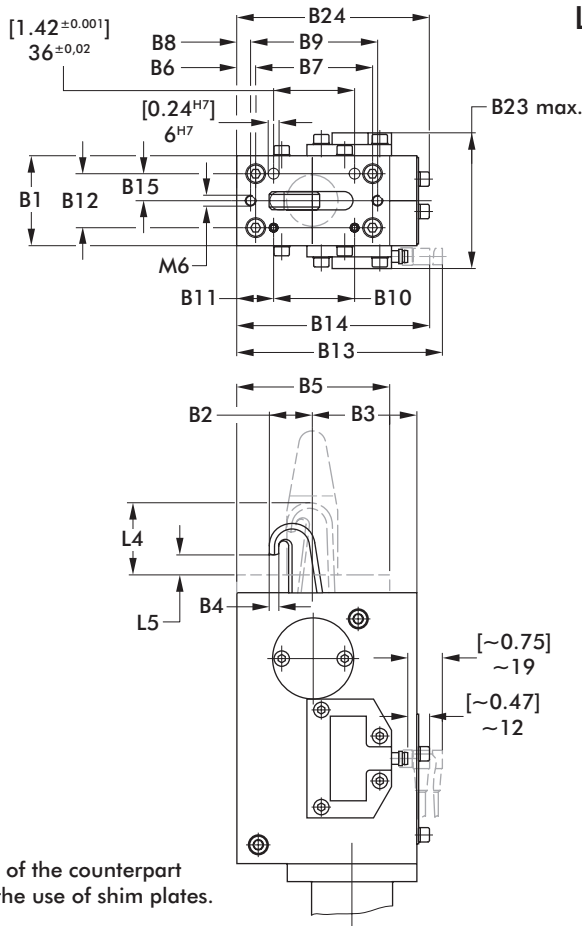


| Specification | Unit | 82P30-3 | 82P35-3 |
|---|-----------------------------|----------------|----------------|
| Max. Clamping Force @ 6 bar | [lbf] N | [450] 2000 | [790] 3500 |
| Max. Operating Pressure | bar [psi] | [87] 6 | [87] 6 |
| Piston Diameter | [in] mm | [1.18] 30 | [1.38] 35 |
| Air Consumption per Double Stroke @ 6 bar [87psi] | [in ³] liter | [48.82] 0,8 | [48.82] 0,8 |
| Weight | [lb] kg | [6.61] 3 | [7.50] 3,4 |

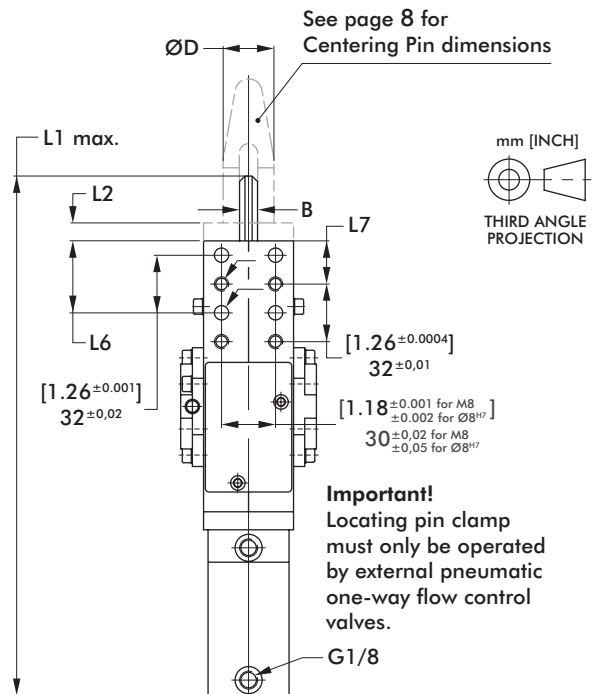
82P30-3/82P35-3

Pneumatic Pin Clamp | Dimensions and Technical Specifications

Locating clamp with single-sided clamping hook
Centering Pin (has to be ordered separately)



| Spare Parts | Order no. | |
|-------------|--------------|--------------|
| | 82P30-3... | 82P35-3... |
| Cylinder | 8PW-019-1 | 8PW-006-1 |
| Seal kit | 8PW-019-1-00 | 8PW-001-1-00 |



Dimensioning of the counterpart should allow the use of shim plates.

Medium: air, max. 6 bar, operation with oil-free air is permissible.

Important!
Locating pin clamp must only be operated by external pneumatic one-way flow control valves.

Technical Data

| Model | Piston Ø | Centering Pin ØD [-0.002] -0,5 | B [-0.004] -0,1 | B1 | B2 | B3 | B4 | B5 | B6 [±0.004] ±0,1 | B7 [±0.008] ±0,2 | B8 | B9 [±0.008] ±0,2 | B10 [±0.004] ±0,1 |
|---------------|-----------|--------------------------------|-----------------|-----------|-------------|-----------|-------------|-----------|------------------|------------------|-------------|------------------|-------------------|
| 82P30-3200000 | | [0.79-0.91] 20,0-23,0 | | | [0.73] 18,5 | | [0.20] 5 | | | | | | |
| 82P30-3250000 | [1.18] 30 | [0.91-1.10] 23,1-28,0 | [0.39] 10 | [1.97] 50 | [0.81] 20,5 | [2.28] 58 | [0.21] 5,25 | [3.35] 85 | [0.41] 10,5 | [2.56] 65 | [0.41] 10,5 | [2.56] 65 | [1.38] 35 |
| 82P30-3300000 | | [1.10-1.30] 28,1-33,0 | | | [0.89] 22,5 | | | | | | | | |
| 82P35-3400000 | [1.38] 35 | [1.30-1.77] 33,1-45,0 | [0.47] 12 | [2.36] 60 | [1.34] 34 | [2.09] 53 | [0.28] 7 | [3.54] 90 | [0.75] 19 | [2.40] 61 | [0.28] 7 | [2.99] 76 | [1.46] 37 |

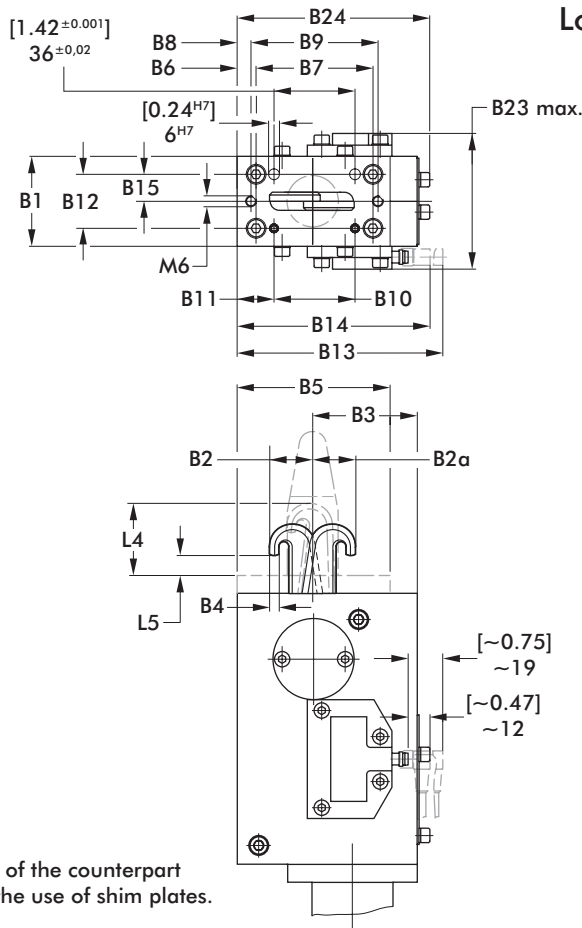
| Model | B11 [±0.004] ±0,1 | B12* [±0.002] ±0,5 | B13 max. | B14 max. | B15* [±0.001] ±0,025 | B23 max. | B24 | L1 max. | L2 [±0.004] ±0,1 | L4 ~ | L5 [±0.002] ±0,5 | L6 [±0.002] ±0,1 | L7 [±0.004] ±0,1 |
|---------------|-------------------|--------------------|------------|------------|----------------------|-------------|------------|-------------|------------------|-----------|------------------|------------------|------------------|
| 82P30-3200000 | | | | | | | | [11.97] 304 | | [1.57] 40 | | | |
| 82P30-3250000 | [1.00] 25,5 | [1.18] 30 | [4.49] 114 | [4.21] 107 | [0.59] 15 | [2.97] 75,4 | [4.21] 107 | [12.05] 306 | [0.39] 10 | [1.73] 44 | [0.45] 11,5 | [1.57] 40 | [0.94] 24 |
| 82P30-3300000 | | | | | | | | | | [1.77] 45 | | | |
| 82P35-3400000 | [1.22] 31 | [1.57] 40 | | | [0.79] 20 | [3.36] 85,4 | | [12.99] 330 | [0.47] 12 | [2.20] 56 | [0.55] 14 | [1.50] 38 | [0.87] 22 |

*Tolerances for dowel holes only

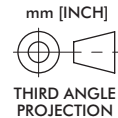
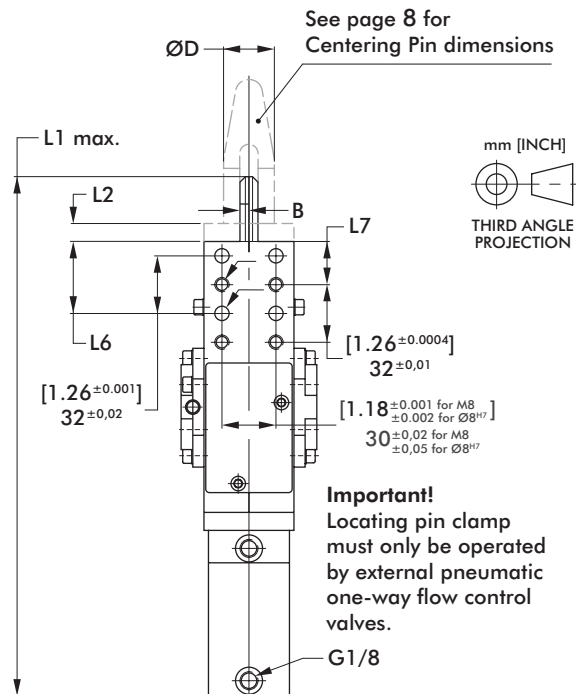
82P30-3/82P35-3

Pneumatic Pin Clamp | Dimensions and Technical Specifications

Locating clamp with double-sided clamping hook
Centering Pin (has to be ordered separately)



| Spare Parts | Order no. | |
|-------------|--------------|--------------|
| | 82P30-3... | 82P35-3... |
| Cylinder | 8PW-019-1 | 8PW-006-1 |
| Seal kit | 8PW-019-1-00 | 8PW-001-1-00 |



Dimensioning of the counterpart should allow the use of shim plates.

Medium: air, max. 6 bar, operation with oil-free air is permissible.

Important!
Locating pin clamp must only be operated by external pneumatic one-way flow control valves.

Technical Data

| Model | Piston Ø | Centering Pin ØD [-0.002 -0,05] | B [-0.004 -0,1] | B1 | B2 | B2α | B3 | B4 | B5 | B6 [±0.004 ±0,1] | B7 [±0.008 ±0,2] | B8 | B9 [±0.000 ±0,2] |
|---------------|--------------|---------------------------------------|-----------------------|--------------|----------------|----------------|--------------|----------------|--------------|------------------------|------------------------|----------------|------------------------|
| 82P30-32000D0 | | [0.79-0.91] 20,0-23,0 | | | [0.73] 18,5 | [0.77] 19,5 | | [0.20] 5 | | | | | |
| 82P30-32500D0 | [1.18] 30 | [0.91-1.10] 23,1-28,0 | [0.20] 5 | [1.97] 50 | [0.81] 20,5 | [0.85] 21,5 | [2.28] 58 | [0.21] 5,25 | [3.35] 85 | [0.41] 10,5 | [2.56] 65 | [0.41] 10,5 | [2.56] 65 |
| 82P30-33000D0 | | [1.10-1.30] 28,1-33,0 | | | [0.89] 22,5 | [0.93] 23,5 | | | | | | | |
| 82P35-34000D0 | [1.38] 35 | [1.30-1.77] 33,1-45,0 | [0.14] 3,5 | [2.36] 60 | [1.34] 34 | [1.34] 34 | [2.09] 53 | [0.28] 7 | [3.54] 90 | [0.75] 19 | [2.40] 61 | [0.28] 7 | [2.99] 76 |

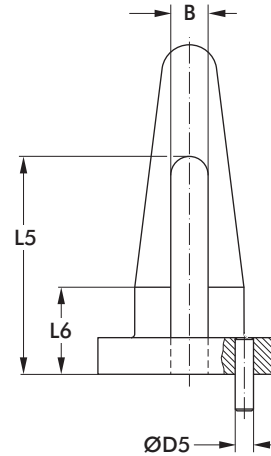
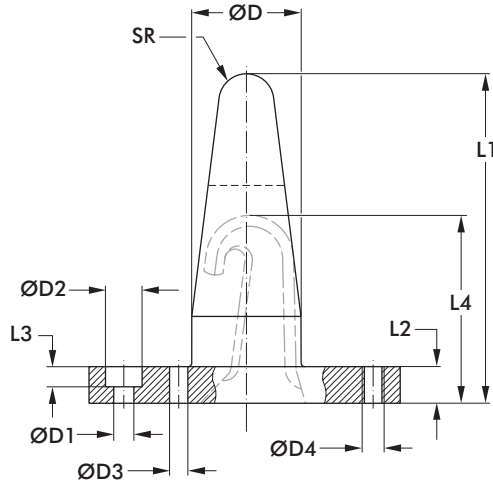
| Model | B10 [±0.004 ±0,1] | B11 [±0.004] ±0,1] | B12* [±0.002] ±0,05] | B13 max. | B14 max. | B15* [±0.001] ±0,025] | B23 max. | B24 | L1 max. | L2 [±0.004] ±0,1] | L4 ~ | L5 | L6 [±0.002] ±0,5] | L7 [±0.004] ±0,1] |
|---------------|-------------------------|--------------------------|----------------------------|---------------|---------------|-----------------------------|----------------|---------------|----------------|-------------------------|--------------|----------------|-------------------------|-------------------------|
| 82P30-32000D0 | | | | | | | | | [11.97] 304 | | [1.57] 40 | | | |
| 82P30-32500D0 | [1.38] 35 | [1.00] 25,5 | [1.18] 30 | [4.49] 114 | [4.21] 107 | [0.59] 15 | [2.97] 75,4 | [4.21] 107 | [12.05] 306 | [0.39] 10 | [1.73] 44 | [0.45] 11,5 | [1.57] 40 | [0.94] 24 |
| 82P30-33000D0 | | | | | | | | | | | [1.77] 45 | | | |
| 82P35-34000D0 | [1.46] 37 | [1.22] 31 | [1.57] 40 | | | [0.79] 20 | [3.36] 85,4 | | [12.99] 330 | [0.47] 12 | [2.20] 56 | [0.55] 14 | [1.50] 38 | [0.87] 22 |

*Tolerances for dowel holes only

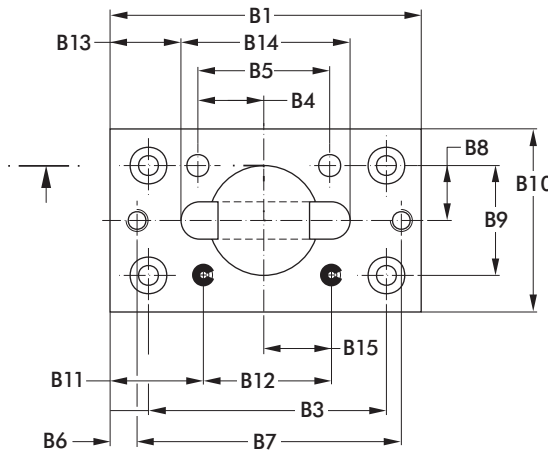
82P30-3/82P35-3 CENTERING PINS

Pneumatic Pin Clamp | Dimensions and Technical Specifications

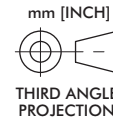
Centering Pin (has to be ordered separately)



Centering pin (accessory part)



Locating pin clamp with single-sided clamping hook and centering pin



| Base locating clamp model | Order no. | ØD [-0.002 -0,05] | ØD1 | ØD2 | ØD3 H7 | ØD4 | ØD5 H11 | SR | L1 | L2 [+0.004 +0,1] | L3 | L4 | L5 | L6 | B | B1 |
|---------------------------|----------------|--------------------------|--------|--------|-----------|-----|-------------|---------------|---------------|------------------------|-------------|--------------|----------------|--------------|----------------|--------------|
| 82P30-320.... | 82P30-3-___.1) | [0.79-0.91] 20,0-23,0 | | | | | | [0.20] 5 | [3.15] 80 | | | [2.05] 52 | | | | |
| 82P30-325.... | 82P30-3-___.1) | [0.91-1.10] 23,1-28,0 | [0.22] | [0.39] | [0.24] | M6 | [0.20] 5 | [0.30] 7.5 | [3.54] 90 | [0.39] 10 | [0.24] 6 | [2.13] 54 | [2.34] 59.5 | [0.98] 25 | [0.40] 10.2 | [3.35] 85 |
| 82P30-330.... | 82P30-3-___.1) | [1.10-1.30] 28,1-33,0 | | | | | | | | | | [2.17] 55 | | | | |
| 82P35-340.... | 82P35-3-___.1) | [1.30-1.77] 33,1-45,0 | | | | | | [0.31] 8 | [4.02] 102 | [0.47] 12 | | [2.68] 68 | [2.89] 73.5 | [1.18] 30 | [0.48] 12.2 | [3.54] 90 |

| Base locating clamp model | Order no. | B2 [±0.004 ±0,1] | B3 [±0.001 ±0,2] | B4 [±0.0001 ±0,02] | B5 [±0.0001 ±0,02] | B6 | B7 [±0.001 ±0,2] | B8* [±0.001 ±0,025] | B9* [±0.002 ±0,05] | B10 | B11 [±0.004 ±0,1] | B12 [±0.004 ±0,1] | B13 | B14 | B15 [±0.002 ±0,05] | |
|---------------------------|----------------|------------------------|------------------------|--------------------------|--------------------------|----|------------------------|---------------------------|--------------------------|--------------|-------------------------|-------------------------|--------------|----------------|--------------------------|----------------|
| 82P30-320.... | 82P30-3-___.1) | | | | | | | | | | | | | | | |
| 82P30-325.... | 82P30-3-___.1) | [0.41] 10.5 | [2.56] 65 | [0.71] 18 | [1.42] 36 | | [0.41] 10.5 | [2.56] 65 | [0.59] 15 | [1.18] 30 | [1.97] 50 | [1.00] 25.5 | [1.38] 35 | [0.76] 19.4 | [1.82] 46.2 | [0.73] 18.5 |
| 82P30-330.... | 82P30-3-___.1) | | | | | | | | | | | | | | | |
| 82P35-340.... | 82P35-3-___.1) | [0.75] 19 | [2.40] 61 | | | | [0.28] 7 | [2.99] 76 | [0.79] 20 | [1.57] 40 | [2.36] 60 | [1.22] 31 | [1.46] 37 | [0.63] 16 | [2.44] 62 | [0.83] 21 |

* Tolerance for dowel hole

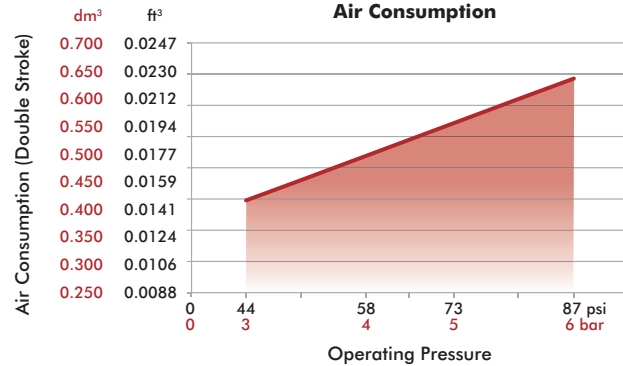
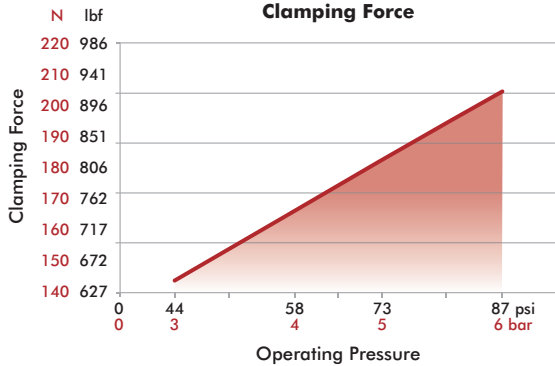
¹⁾ ___.1) = centering pin diameter "D"

Ordering example: To order the centering pin for locating pin clamp 82P30-325C000 with pin diameter "D" = 26.5 mm: "82P30-3-26.5"

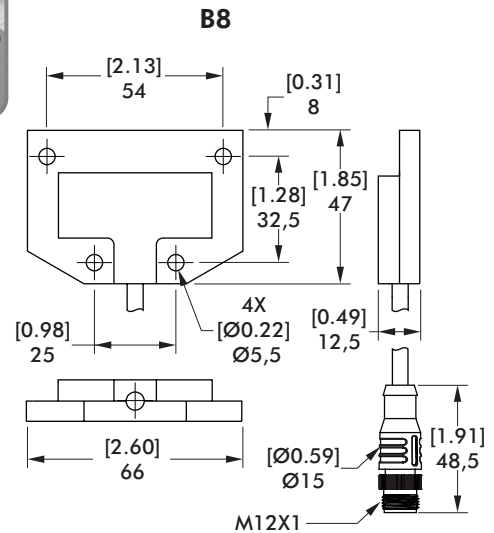
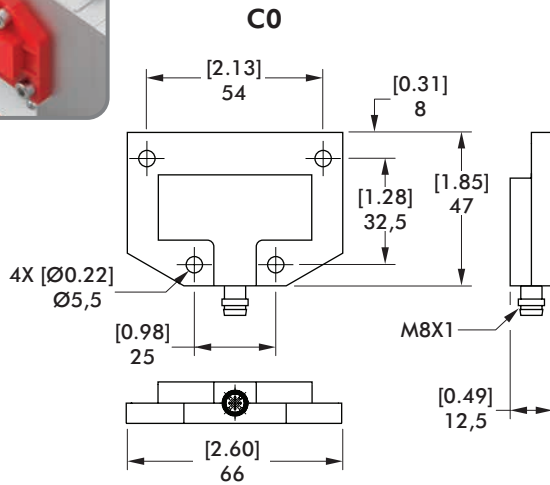
82P30-3/82P35-3 SENSORS

Pneumatic Pin Clamp | Dimensions and Technical Specifications

Clamping Force and Air Consumption

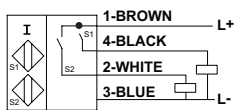
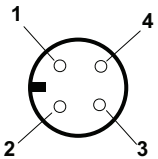


C0 and B8 Inductive Sensing Systems



Inductive Sensor Wiring Diagram

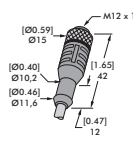
Sensing system immune to interference from A.C./D.C. arc welding.



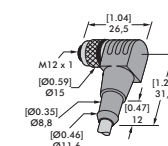
1-Common +
2-Open
3-Common -
4-Closed

Sensor Cable Accessories

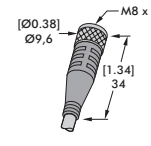
| Description | Order no. |
|---|-----------|
| B8 Sensor Cables (1 connector & 5 m cable) | |
| M12x1 connector, straight, 5-pin | 8EL-002-1 |
| M12x1 connector, 90° angular, 4-pin | 8EL-003-1 |
| C0 Sensor Cables (1 connector & 5 m cable) | |
| M8x1 connector, straight, 5-pin | 8EL-009-1 |
| M8x1 connector, 90° angular, 4-pin | 8EL-007-1 |



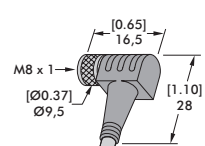
M12x1
Straight
Cable



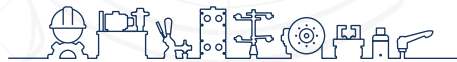
M12x1
Angular
Cable



M8x1
Straight
Cable



M8x1
Angular
Cable



inf @ /CESEHSA.com.mx

