

# Miniture Power Clamps

01/28/2025



[info@cesehsa.com.mx](mailto:info@cesehsa.com.mx)

[cesehsa.com.mx](http://cesehsa.com.mx)



# Miniture Power Clamps

01/28/2025

This catalog is a custom document and the products included is based on your unique selection from portions of complete catalogs that already exist. Please refer to our full catalogs for more information on products not included in this customized document.

## Table of Contents

Miniture Power Clamps

PC-PPC-1

# Miniture Power Clamps

01/28/2025

## Table of Contents (continued)

# 81L

## Pneumatic Power Clamps | Miniature | Ordering Information

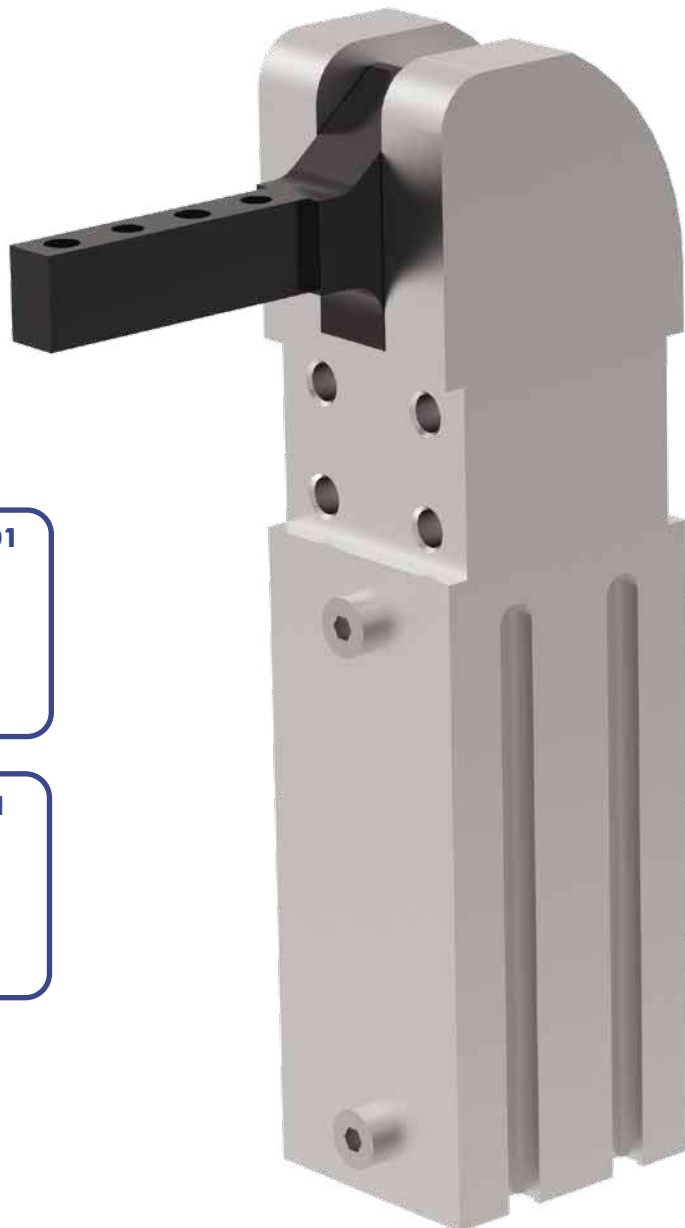
**81L** **12-1** **01** **00**

Size	Description
<b>12-1</b>	12 mm Cylinder (M5 Port)
<b>16-1</b>	16 mm Cylinder (M5 Port)
<b>20-1</b>	20 mm Cylinder (M5 Port)
<b>25-1</b>	20 mm Cylinder (M5 Port)

Arm Style	Description
<b>01</b>	Clamping arm, horizontal
<b>41</b>	Clamping arm, vertical

*See below for further details*

Design	Description
<b>00</b>	Standard design



Arm Style



### Accessories

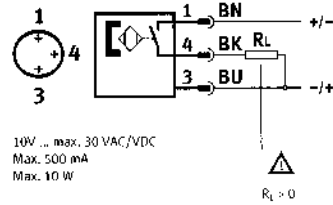
**8EA-109-1**

**82ZB-004-1**

Description (order separately)

Sensor, 3-wire cable, M8x1 connector, 3-pin

Adapter for mounting 81L20-1, 81L25-1 to 25mm dia. bar



**12**

Max Holding Torque  
25 Nm [18.4 ft-lb]  
Max Clamping Torque  
4,5 Nm [3.3 ft-lb]  
at 5 bar [72 psi]

**16**

Max Holding Torque  
60 Nm [44.3 ft-lb]  
Max Clamping Torque  
7 Nm [5.2 ft-lb]  
at 5 bar [72 psi]

**20**

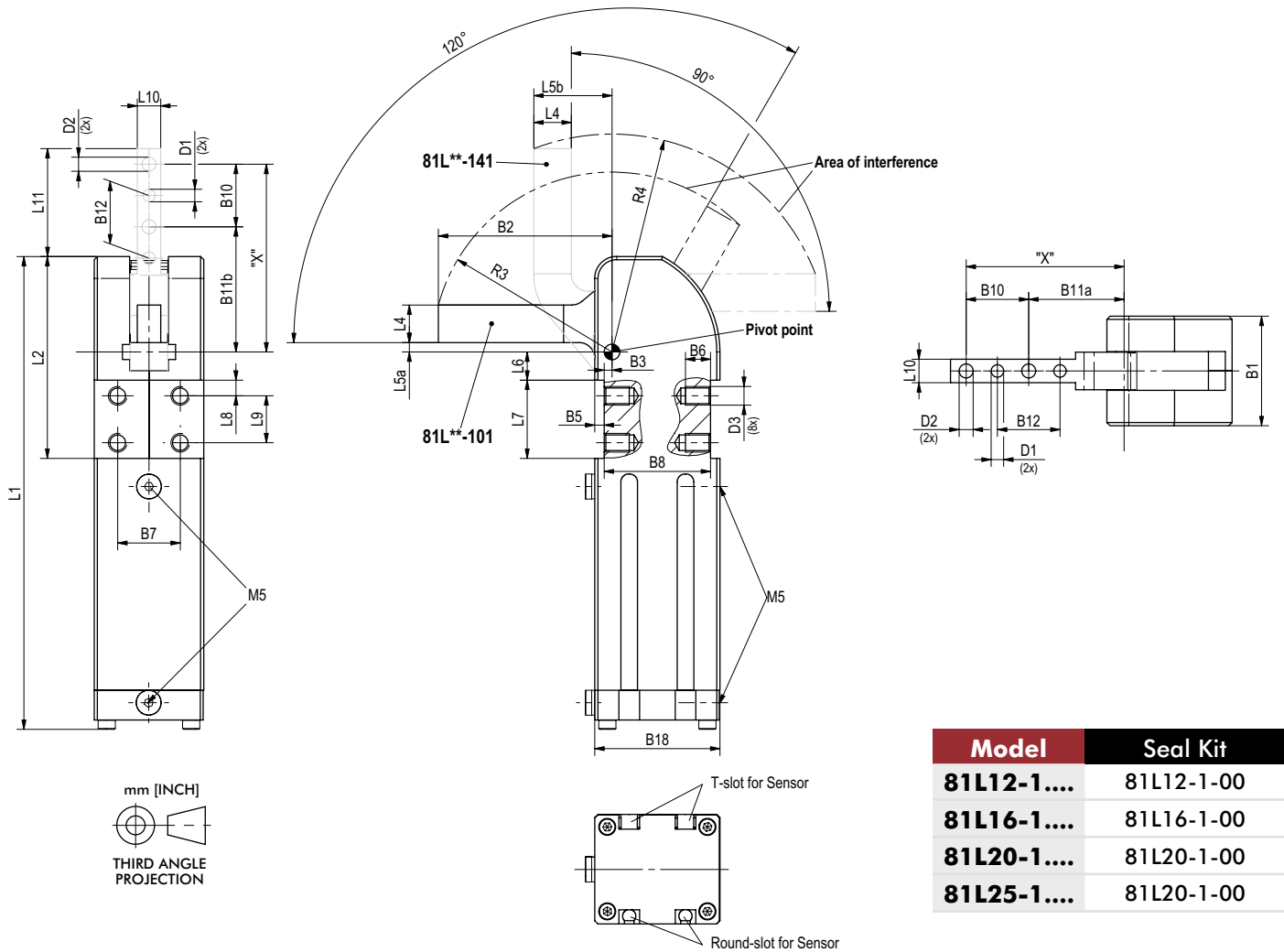
Max Holding Torque  
100 Nm [73.8 ft-lb]  
Max Clamping Torque  
18 Nm [13.3 ft-lb]  
at 5 bar [72 psi]

**25**

Max Holding Torque  
100 Nm [73.8 ft-lb]  
Max Clamping Torque  
18 Nm [13.3 ft-lb]  
at 5 bar [72 psi]

# 81L

## Pneumatic Power Clamps | Miniature | Dimensions and Seal Kits



Power by compressed air, max. 6 bar Operation with oil-free air is permissible.

Model	D1 Ø [H7]	D2 Ø	D3 Ø	B1	B2	B3 ±0,1	B5 ±0,2	B6	B7 ±0,1	B8 ±0,1	B10 ±0,2	B11α	B11b	B12
<b>81L12-1....</b>	[0.12] 3	[0.13] 3,3	M4	[0.94] 24	[1.57] 40	[0.10] 2,5	[0.06] 1,5	[0.24] 6	[0.59] 15	[0.98] 25	[0.35] 9	[1.06] 27	[1.24] 31,5	[0.35] 9
<b>81L16-1....</b>	[0.12] 3	[0.17] 4,3	M5	[1.12] 30	[1.97] 50	[0.08] 2	[0.08] 2	[0.19] 5	[0.79] 20	[1.02] 26	[0.59] 15	[1.18] 30	[1.56] 39,5	[0.59] 15
<b>81L20-1....</b>	[0.16] 4	[0.18] 4,5	M6	[1.38] 35	[2.12] 55,5	[0.10] 2,5	[0.12] 3	[0.28] 7	[0.79] 20	[1.34] 34	[0.79] 20	[1.20] 30,5	[1.57] 40	[0.79] 20
<b>81L25-1....</b>	[0.16] 4	[0.26] 6,5	M6	[1.38] 35	[2.58] 65,5	[0.10] 2,5	[0.12] 3	[0.28] 7	[0.79] 20	[1.34] 34	[0.79] 20	[1.59] 40,5	[1.97] 50	[0.79] 20

Model	B18	L1 ~	L2	L4	L5α	L5b	L6	L7 ±0,1	L8	L9	L10	L11	R3 ~	R4 ~
<b>81L12-1....</b>	[1.10] 28	[4.09] 104	[1.59] 40,5	[0.28] 7	[0.10] 2,5	[0.7] 17,5	[0.18] 4,5	[0.59] 15	[0.12] 3	[0.35] 9	[0.24] 6	[0.93] 23,5	[1.61] 41	[1.89] 48
<b>81L16-1....</b>	[1.18] 30	[4.69] 119	[1.95] 49,5	[0.35] 9	0.09 2,25	[0.8] 20,5	[0.23] 5,75	[0.79] 20	[0.16] 4	[0.47] 12	[0.31] 8	[1.41] 35,75	[2.00] 51	[2.48] 63
<b>81L20-1....</b>	[1.57] 40	[5.94] 151	[2.54] 64,5	[0.47] 12	[0.12] 3	[0.98] 25	[0.35] 9	[0.98] 25	[0.19] 5	[0.59] 15	[0.29] 7,5	[1.36] 34,5	[2.26] 57,5	[2.75] 70
<b>81L25-1....</b>	[1.57] 40	[5.94] 151	[2.54] 64,5	[0.47] 12	[0.12] 3	[0.98] 25	[0.35] 9	[0.98] 25	[0.19] 5	[0.59] 15	[0.47] 12	[1.75] 44,5	[2.64] 67	[3.11] 79

## Pneumatic Power Clamps | Miniature | Technical Specifications

Model	Max. Holding Torque Nm [ft-lb]	Max. Clamping Torque at 5 bar [72 psi] Nm [ft-lb]	Weight kg [lbs]	Air Consumption per double stroke at 5 bar [72 psi] dm <sup>3</sup> [ft <sup>3</sup> ]	Max. Added Load (at Position, "X") g [oz]
81L12-101..	25 [18.4]	4,5 [3.3]	0,16 [0.4]	0,25 [0.01]	50 [1.8]
81L12-141..	20 [14.8]	4,5 [3.3]	0,17 [0.4]	0,25 [0.01]	50 [1.8]
81L16-101..	60 [44]	6,5 [4.8]	0,25 [0.6]	0,27 [0.01]	80 [2.8]
81L16-141..	40 [29.5]	7,0 [5.23]	0,27 [0.6]	0,26 [0.01]	80 [2.8]
81L20-101..	100 [73.8]	18 [13.3]	0,50 [1.1]	0,40 [0.02]	90 [3.2]
81L20-141..	80 [59]	17 [12.5]	0,52 [1.2]	0,35 [0.01]	90 [3.2]
81L25-101..	100 [73.8]	18 [13.3]	0,52 [1.2]	0,40 [0.02]	100 [3.5]
81L25-141..	80 [59]	17 [12.5]	0,54 [1.25]	0,35 [0.01]	100 [3.5]

# 82L...-4...

## Enclosed Pneumatic Power Clamps | Miniature | Ordering Information

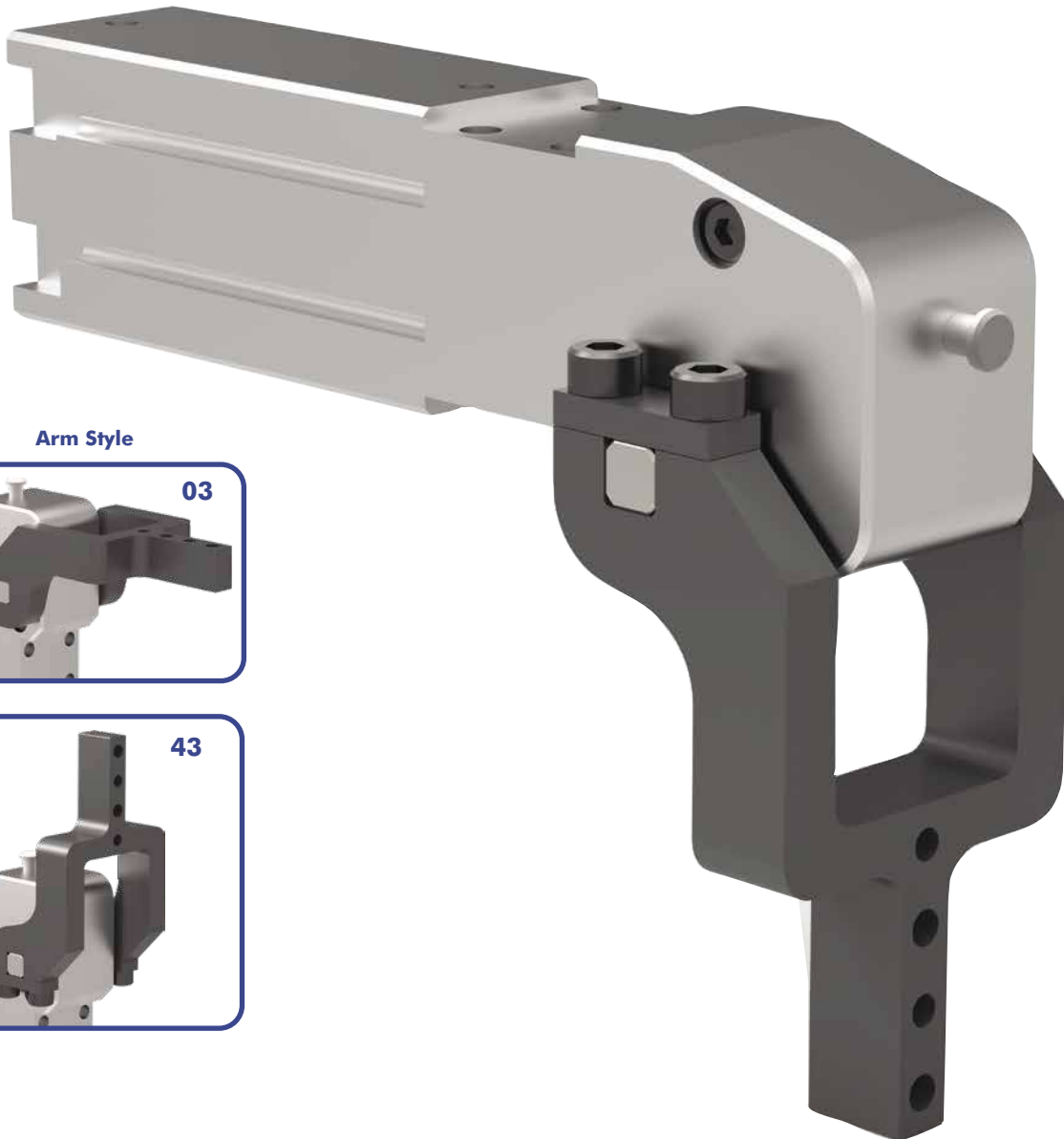
82L 16-4 03 0

Size	Description
12-4	12 mm Cylinder (M5 Port)
16-4	16 mm Cylinder (M5 Port)
20-4	20 mm Cylinder (M5 Port)
25-4	25 mm Cylinder (M5 Port)

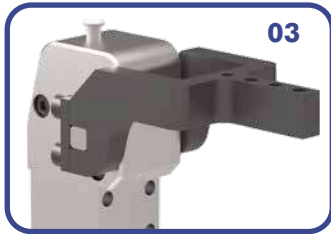
Arm Style	Description
00	No clamping arm
03	U-bar, central 90°
43	U-bar, central 180°

See below for further details

Opening Angle	Description
0	105° (Standard)
3	90°
4	75°
5	60°
6	45°
7	30°
8	15°



Arm Style





### Accessories

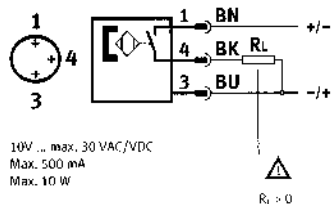
**8EA-109-1**

Description (order separately)

Sensor, 3-wire cable, M8x1 connector, 3-pin

**82ZB-004-1**

Adapter for mounting 82L20-4, 82L25-4 to 25mm dia. bar



**12**

Max Holding Torque  
35 Nm [25.8 ft-lb]  
Max Clamping Torque

**90° version:** 10,4 Nm [7.7 ft-lb]  
**180° version:** 8,7 Nm [6.4 ft-lb]  
at 5 bar [72 psi]



**16**

Max Holding Torque  
40 Nm [29.5 ft-lb]  
Max Clamping Torque

12,4 Nm [9.1 ft-lb]  
11 Nm [8.1 ft-lb]  
at 5 bar [72 psi]



**20**

Max Holding Torque  
50 Nm [36.9 ft-lb]  
Max Clamping Torque

21 Nm [15.5 ft-lb]  
19,3 Nm [14.2 ft-lb]  
at 5 bar [72 psi]



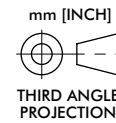
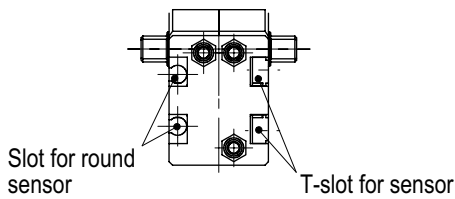
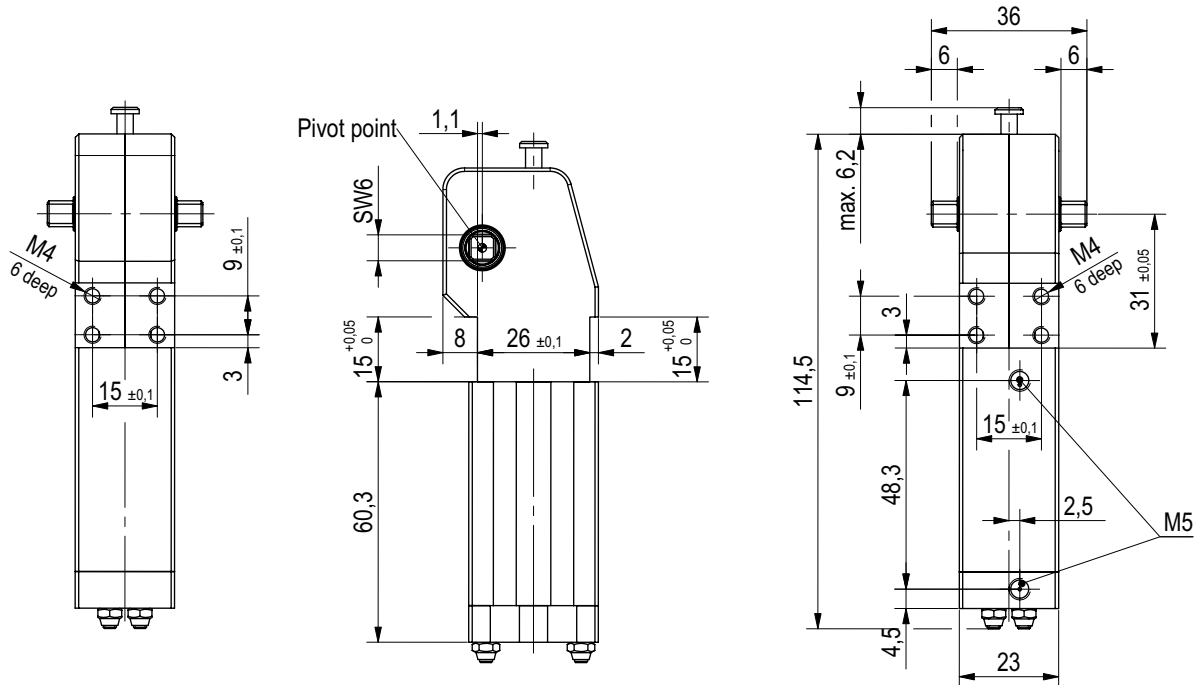
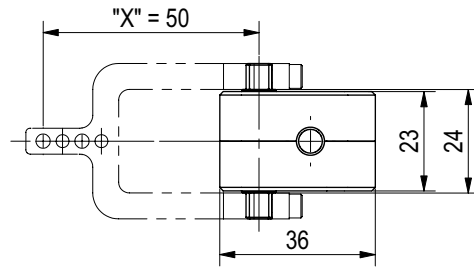
**25**

Max Holding Torque  
80 Nm [59.0 ft-lb]  
Max Clamping Torque

31,8 Nm [23.4 ft-lb]  
28,5 Nm [21.0 ft-lb]  
at 5 bar [72 psi]

# 82L12-4

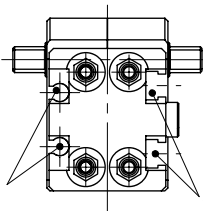
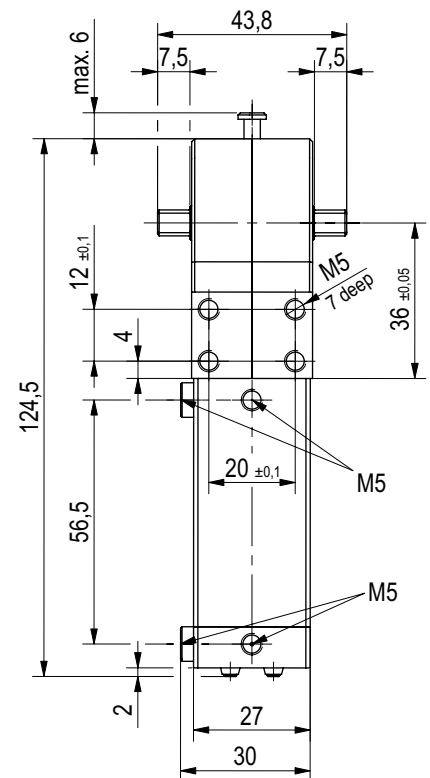
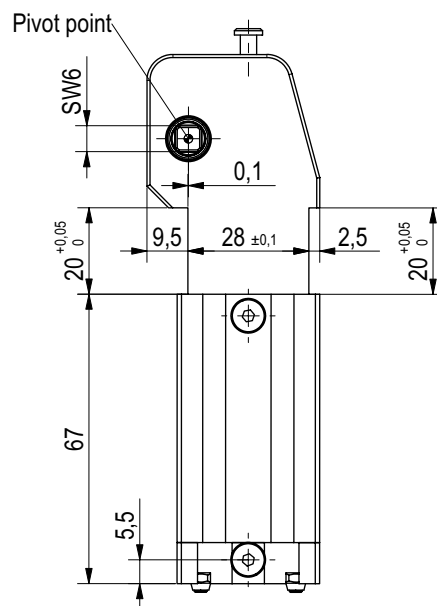
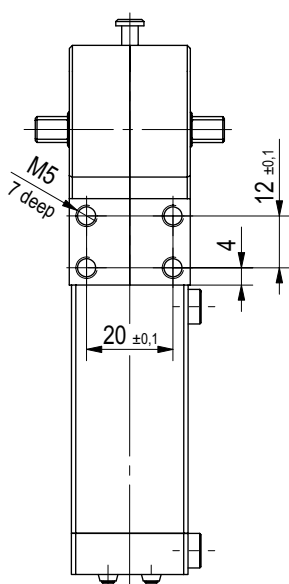
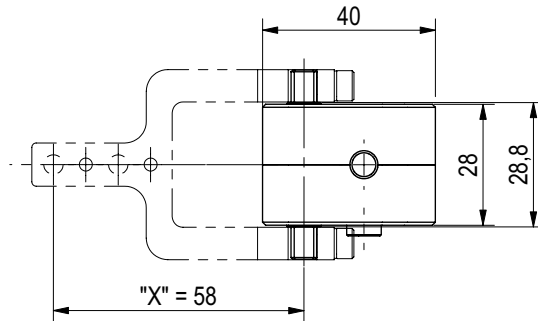
## Enclosed Pneumatic Power Clamps | Miniature | Dimensions and Technical Specifications



Power by compressed air, max. 6 bar Operation with oil-free air is permissible.

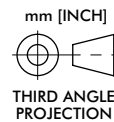
Model	Max. Holding Torque Nm [ft-lb]	Max. Clamping Torque at 5 bar [72 psi] Nm [ft-lb]	Weight [with arm] kg [lbs]	Air Consumption per double stroke at 5 bar [72 psi] dm <sup>3</sup> [ft <sup>3</sup> ]	Max. Added Load (at Position "X") g [oz]
82L12-4030	35 [25.8]	10,4 [7.8]	0,23 [0.5]	0,25 [0.01]	50 [1.8]
82L12-4430	35 [25.8]	8,7 [6.4]	0,23 [0.5]	0,25 [0.01]	50 [1.8]

## Enclosed Pneumatic Power Clamps | Miniature | Dimensions and Technical Specifications



Slot for round sensor

T-slot for sensor

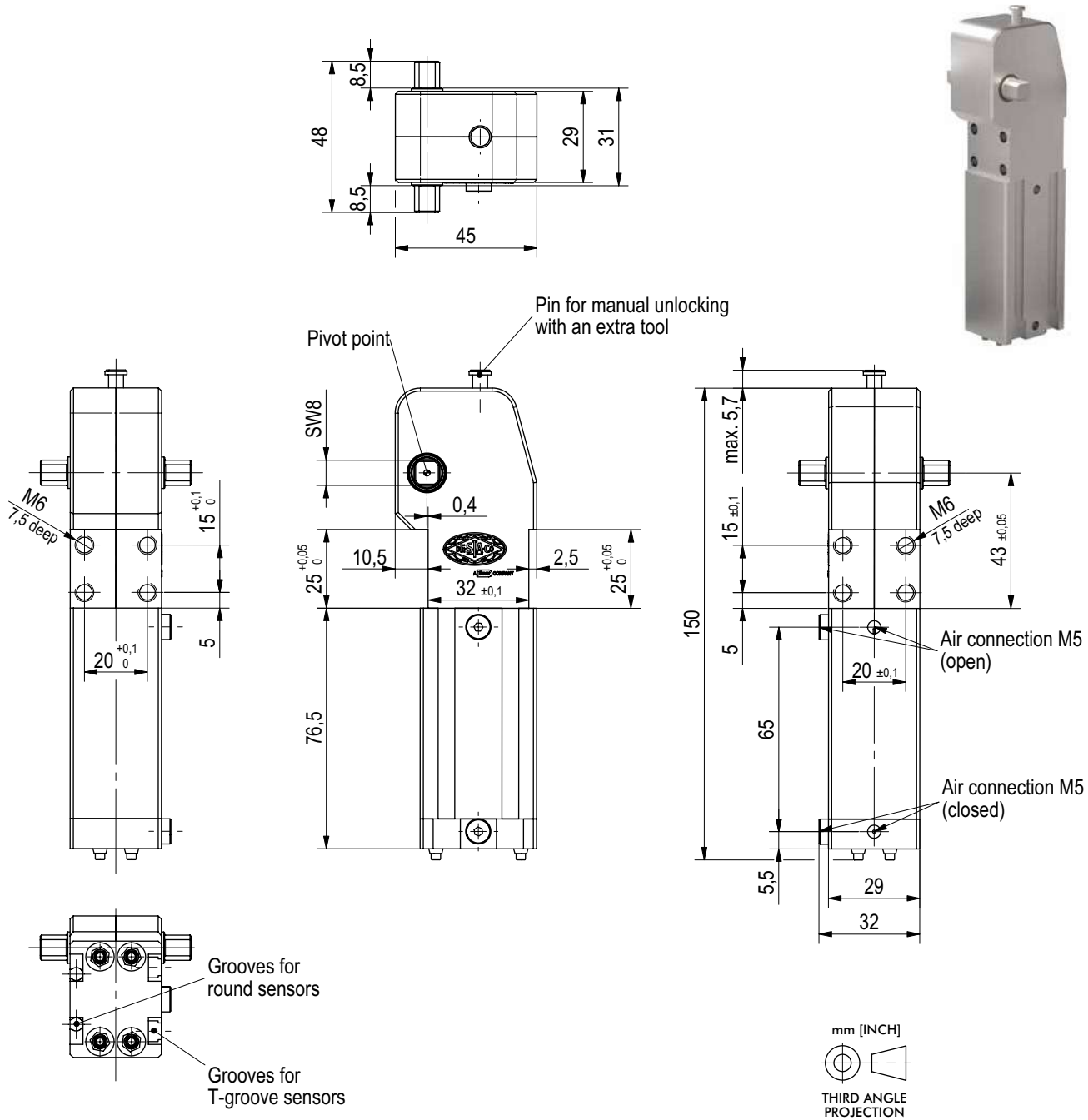


Power by compressed air, max. 6 bar Operation with oil-free air is permissible.

Model	Max. Holding Torque Nm [ft-lb]	Max. Clamping Torque at 5 bar [72 psi] Nm [ft-lb]	Weight [with arm] kg [lbs]	Air Consumption per double stroke at 5 bar [72 psi] dm <sup>3</sup> [ft <sup>3</sup> ]	Max. Added Load (at Position "X") g [oz]
<b>82L16-4030</b>	40 [29.5]	12,4 [9.4]	0,33 [0.7]	0,27 [0.01]	80 [2.8]
<b>82L16-4430</b>	40 [29.5]	11,0 [8.1]	0,33 [0.7]	0,27 [0.01]	80 [2.8]

# 82L20-4

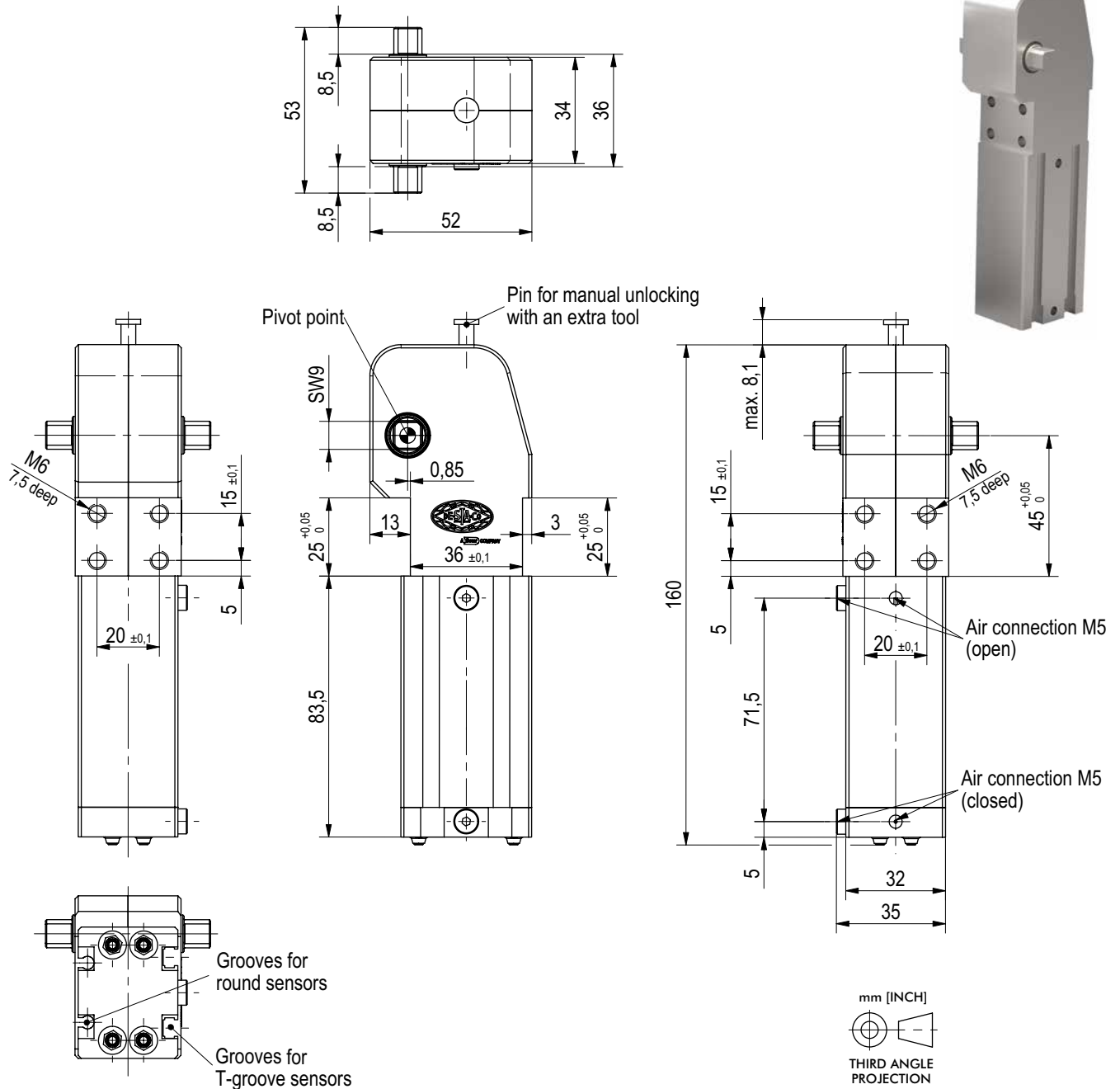
## Enclosed Pneumatic Power Clamps | Miniature | Dimensions and Technical Specifications



Power by compressed air, max. 6 bar Operation with oil-free air is permissible.

Model	Max. Holding Torque Nm [ft-lb]	Max. Clamping Torque at 5 bar [72 psi] Nm [ft-lb]	Weight [with arm] kg [lbs]	Air Consumption per double stroke at 5 bar [72 psi] dm <sup>3</sup> [ft <sup>3</sup> ]	Max. Added Load (at Position "X") g [oz]
82L20-4030	50 [36.9]	21,0 [15.5]	0,42 [0.9]	0,35 [0.01]	90 [3.2]
82L20-4430	50 [36.9]	19,3 [14.3]	0,42 [0.9]	0,35 [0.01]	90 [3.2]

## Enclosed Pneumatic Power Clamps | Miniature | Dimensions and Technical Specifications

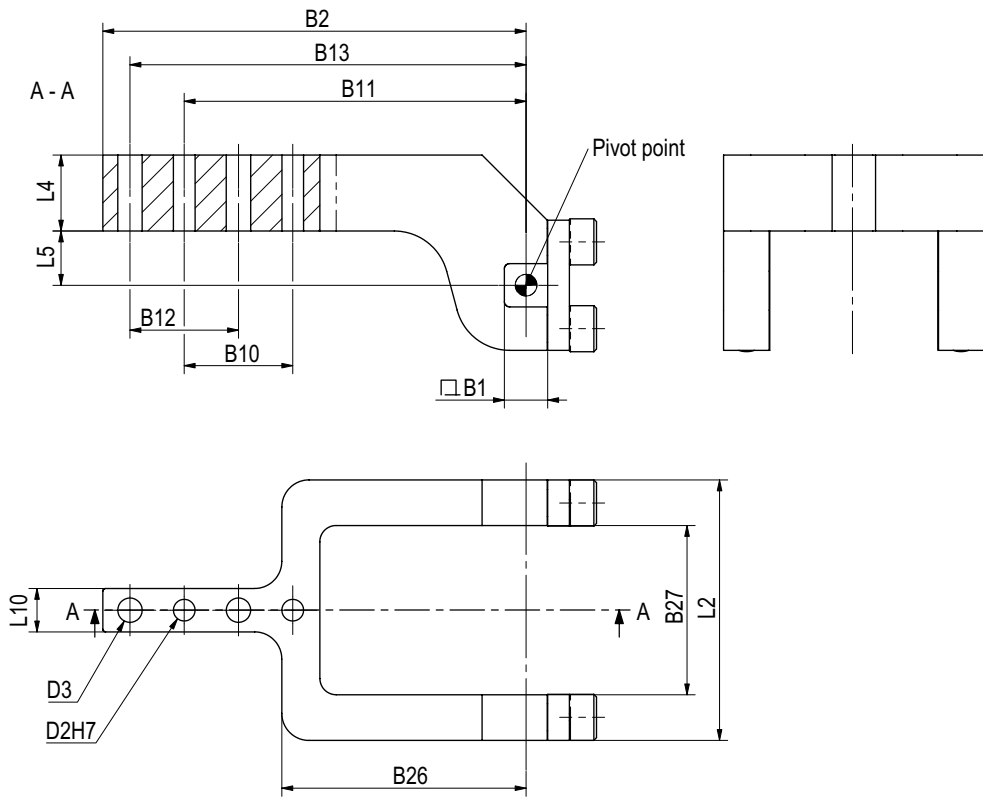


Power by compressed air, max. 6 bar Operation with oil-free air is permissible.

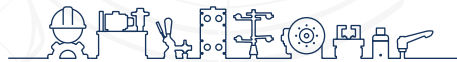
Model	Max. Holding Torque Nm [ft-lb]	Max. Clamping Torque at 5 bar [72 psi] Nm [ft-lb]	Weight [with arm] kg [lbs]	Air Consumption per double stroke at 5 bar [72 psi] dm <sup>3</sup> [ft <sup>3</sup> ]	Max. Added Load (at Position "X") g [oz]
<b>82L25-4030</b>	80 [59]	31,8 [23.5]	0,66 [1.5]	0,40 [0.01]	100 [3.5]
<b>82L25-4430</b>	80 [59]	28,5 [12.5]	0,66 [1.5]	0,40 [0.01]	100 [3.5]

# 82L...-4...

## Enclosed Pneumatic Power Clamps | Miniature | Clamp Arm Dimensions



Model	Order no. for Arm	Max. Opening angle	B1	B2	B10 ±0,02	B11 ±0,02	B12 ±0,1	B13 ±0,1	B26	B27	D2 H7	D3	L2	L4	L5	L10
82L12-4...	8JG-401-1-01	105°	6	54	9	45.5	9	50	38,5	24	3	3.3	36	7	10	6
82L16-4...	8JG-402-1-01	105°	6	63	15	50.5	15	58	36,5	29	3	4.5	44	9.5	10	10
82L20-4...	8JG-403-1-01	105°	8	78	20	63	20	73	45	31,2	4	4.5	48	14	10	8
82L25-4...	8JG-404-1-01	105°	9	81	20	66	20	76	48	36	4	6.4	53	16	10	12



inf @ /CESEHSA.com.mx

