

Enclosed Dual Arm

01/28/2025



info@cesehsa.com.mx

cesehsa.com.mx



Enclosed Dual Arm

01/28/2025

This catalog is a custom document and the products included is based on your unique selection from portions of complete catalogs that already exist. Please refer to our full catalogs for more information on products not included in this customized document.

Table of Contents

Enclosed Dual Arm

PC-PPC-75

Enclosed Dual Arm

01/28/2025

Table of Contents (continued)

870-2, 871-2

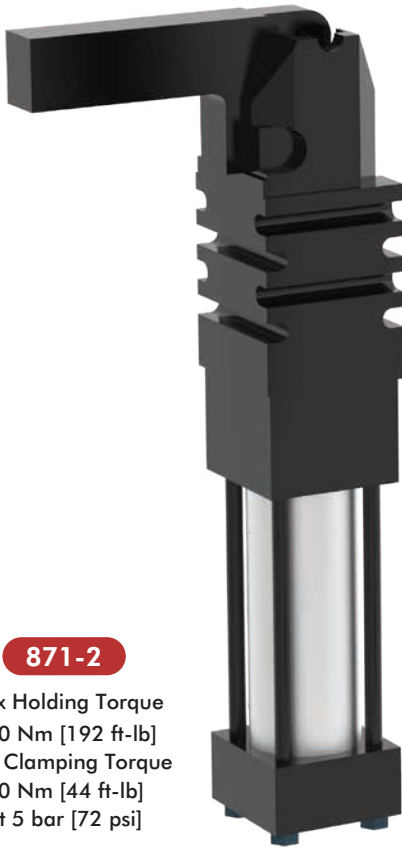
Pneumatic Power Clamps | Ordering Information

870-2

Base Model	Description
870-2	38,1 mm [1.5 in.] Cylinder with Vertical Clamp Arm
871-2	38,1 mm [1.5 in.] Cylinder with Horizontal Clamp Arm

Sensors	Description (order separately)
BIM-IKE-AP	Magnetic Sensor, 2 pieces required
810151	Magnetic Sensor, 2 pieces required
810153	Magnetic Sensor, 2 pieces required
810155	Magnetic Sensor, 2 pieces required
810157	Magnetic Sensor, 2 pieces required

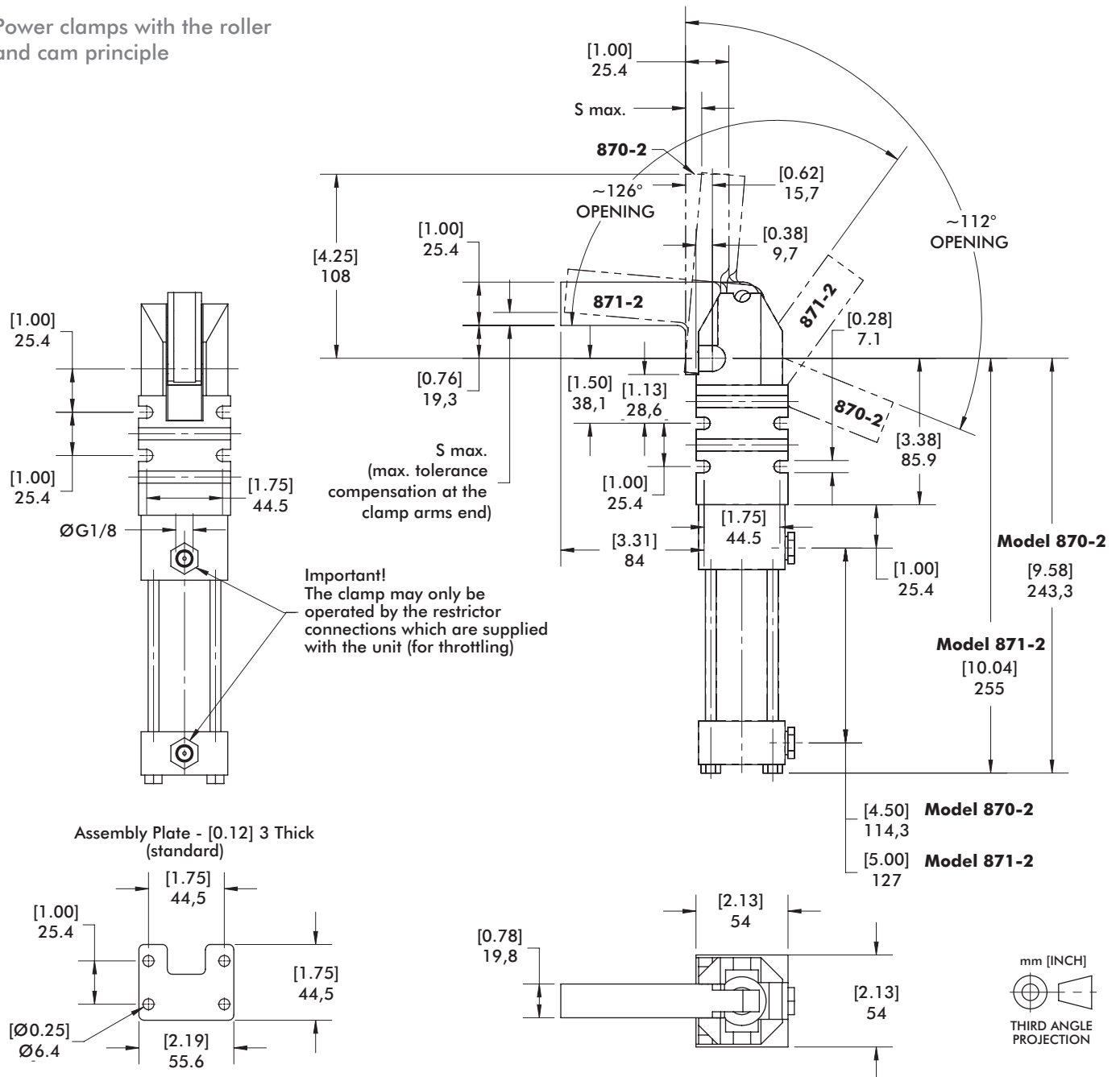
See page 72 for sensor specifications.



870-2, 871-2

Pneumatic Power Clamps | Dimensions and Technical Specifications

Power clamps with the roller and cam principle



Model	Connection	S Max. Max. Tolerance Compensation at the Clamp Arms End [ft lb] Nm	Max. Operating Pressure [psi] bar	Cylinder Ø [in.] mm	Opening Angle	Weight [lbs] kg	Air Consumption per double stroke at 5 bar dm ³ [ft ³]
870-2	G 1/8	[3] 4,5	[145] 10	[1.50] 38,1	112°	[6.60] 3	0,95 [0.03]
871-2		[3] 3,5			118°		

Sensor Options	Mount Style	Connector	Length	Function	Voltage	Max. Switching Current	Voltage Drop
BIM-IKE-AP	Tie Rod	No connector cord	2m [6.6 ft.]	PNP	10-30V DC	200mA	2.3V
810151				Reed	5-120V AC/DC	500mA	3.5V
810153			Reed	24-240V AC	4A	1.0V	
810155			PNP	6-24V DC	500mA	1.0V	
810157			NPN	6-24V DC	500mA	1.0V	

860, 861, 890, 891, 1000, 1001

Pneumatic Power Clamps | Ordering Information

860

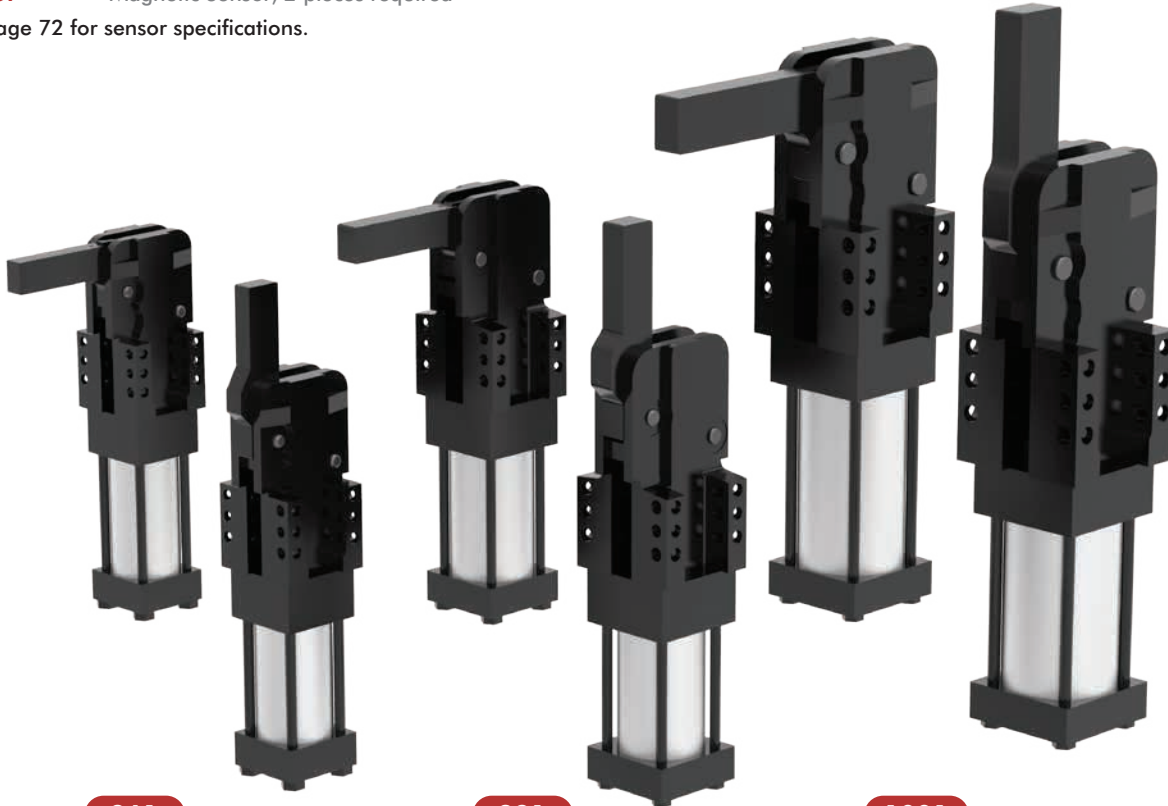
Base Model	Description
860	50,8 mm [2 in.] Cylinder with Vertical Clamp Arm
861	50,8 mm [2 in.] Cylinder with Horizontal Clamp Arm
890	63,5 mm [2.5 in.] Cylinder with Vertical Clamp Arm
891	63,5 mm [2.5 in.] Cylinder with Horizontal Clamp Arm
1000	82,5 mm [3.25 in.] Cylinder with Vertical Clamp Arm
1001	82,5 mm [3.25 in.] Cylinder with Horizontal Clamp Arm

Sensors	Description (order separately)
BIM-IKE-AP	Magnetic Sensor, 2 pieces required
810151	Magnetic Sensor, 2 pieces required
810153	Magnetic Sensor, 2 pieces required
810155	Magnetic Sensor, 2 pieces required
810157	Magnetic Sensor, 2 pieces required

See page 72 for sensor specifications.

Seal Kit	Description (order separately)
8610100	Seal Kit for Model 860, 861
8910100	Seal Kit for Model 890, 891
10010100	Seal Kit for Model 1000, 1001

Cylinder	Description (order separately)
865133-MR	Replacement Cylinder for Model 860
865132-MR	Replacement Cylinder for Model 861
895133-MR	Replacement Cylinder for Model 890
895132-MR	Replacement Cylinder for Model 891
1005134-MR	Replacement Cylinder for Model 1000
1005133-MR	Replacement Cylinder for Model 1001



861

Max Holding Torque
1017 Nm [750 ft-lb]
Max Clamping Torque
256 Nm [180 ft-lb]
at 5 bar [72 psi]

891

Max Holding Torque
1695 Nm [1250 ft-lb]
Max Clamping Torque
553 Nm [408 ft-lb]
at 5 bar [72 psi]

1001

Max Holding Torque
3390 Nm [2500 ft-lb]
Max Clamping Torque
1229 Nm [906 ft-lb]
at 5 bar [72 psi]

860

Max Holding Torque
1017 Nm [750 ft-lb]
Max Clamping Torque
256 Nm [180 ft-lb]
at 5 bar [72 psi]

890

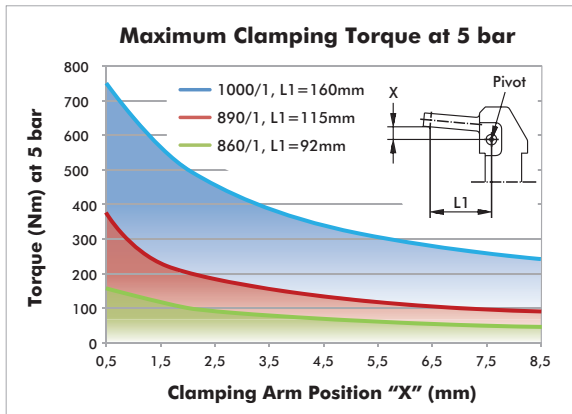
Max Holding Torque
1695 Nm [1250 ft-lb]
Max Clamping Torque
553 Nm [408 ft-lb]
at 5 bar [72 psi]

1000

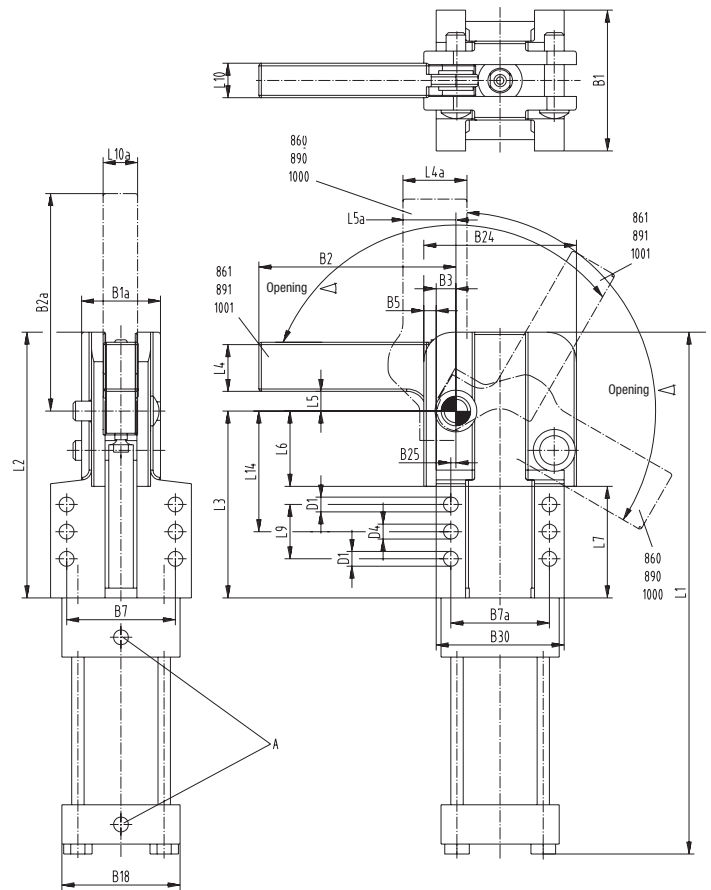
Max Holding Torque
3390 Nm [2500 ft-lb]
Max Clamping Torque
1229 Nm [906 ft-lb]
at 5 bar [72 psi]

860, 861, 890, 891, 1000, 1001

Pneumatic Power Clamps | Dimensions and Technical Specifications



Model	Cylinder Ø mm [in]	Opening Angle	Weight kg [lbs]
860	[2.00]	96°	[8.58]
861	50,8	119°	3,9
890	[2.50]	96°	[16.06]
891	63,5	119°	7,3
1000	[3.25]	96°	[29.70]
1001	82,5	119°	13,5

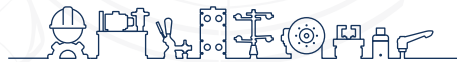


Power by compressed air, max. 6 bar
Operation with oil-free air is permissible.

Information vor machining of clamp arm: Steel 1.0726

Model	A	B1	B1A	B2	B2A	B3	B5	B7	B7A	B18	B24	B25	B30
860	G1/8	[2.94]	[1.75]	-	[5.44]	[0.41]	[0.25]	[2.31]	[2.19]	[2.5]	[3.31]	[0.09]	[2.81]
861		74,7	44,5	[4]	-								
890	G1/8	[3.56]	[2]	-	[6.57]	[0.5]	[0.31]	[2.76]	[2.5]	[3]	[3.87]	[0.13]	[3.25]
891		90,4	50,8	5.06	-								
1000	G1/8	[4.5]	[2.62]	-	[9]	[0.63]	[0.44]	[3.5]	[3.5]	[3.75]	[5.38]	[0.13]	[4.5]
1001		114,3	66,5	7	-								

Model	ØD1	ØD4	L1	L2	L3	L4	L4A	L5	L5a	L6	L7	L9	L10	L10a	L14
860	[0.34]	[0.31]	[12.44]	[5.75]	[4.06]	-	[1.12]	--	[0.69]	[1.44]	[2.5]	[1.25]	[0.62]	[0.62]	[2.5]
861	8,6	7,9	316	146,1	103,1	[1.13]	-	[0.4]	--	36,6	63,5	31,8	15,7	15,7	63,5
890	[0.41]	[0.38]	[13.37]	[6.75]	[4.75]	-	[1.25]	-	[0.84]	[1.75]	[2.65]	[1.38]	[0.81]	[0.81]	[3.06]
891	10,4	9,7	339,6	171,5	120,7	[1.25]	-	[0.5]	--	44,5	67,3	35,1	20,6	20,6	77,7
1000	[0.53]	[0.5]	[17.51]	[9.25]	[6.25]	-	[1.75]	-	[1.37]	[2.25]	[3.96]	[2]	[1]	[1]	[3.75]
1001	13,5	12,7	444,8	235	158,8	[1.75]	-	[0.88]	--	57,2	100,6	50,8	25,4	25,4	95,3



inf @ /CESEHSA.com.mx

