

## 92W-1 Electric Products

01/28/2025



[info@cesehsa.com.mx](mailto:info@cesehsa.com.mx)

[cesehsa.com.mx](http://cesehsa.com.mx)



# Electric Products

01/28/2025

This catalog is a custom document and the products included is based on your unique selection from portions of complete catalogs that already exist. Please refer to our full catalogs for more information on products not included in this customized document.

## Table of Contents

Electric Products

PC-ELC-1

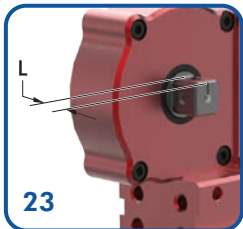
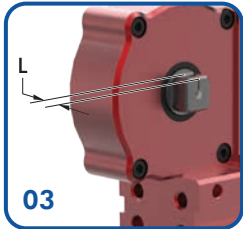
## Table of Contents (continued)

# 92W-1

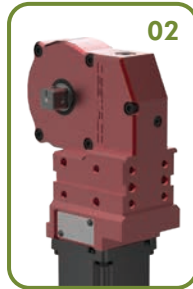
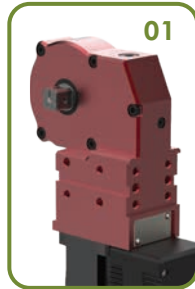
## Enclosed Electric Power Clamps | Smart Clamp | How to Order

92W-1    23    00    02    02

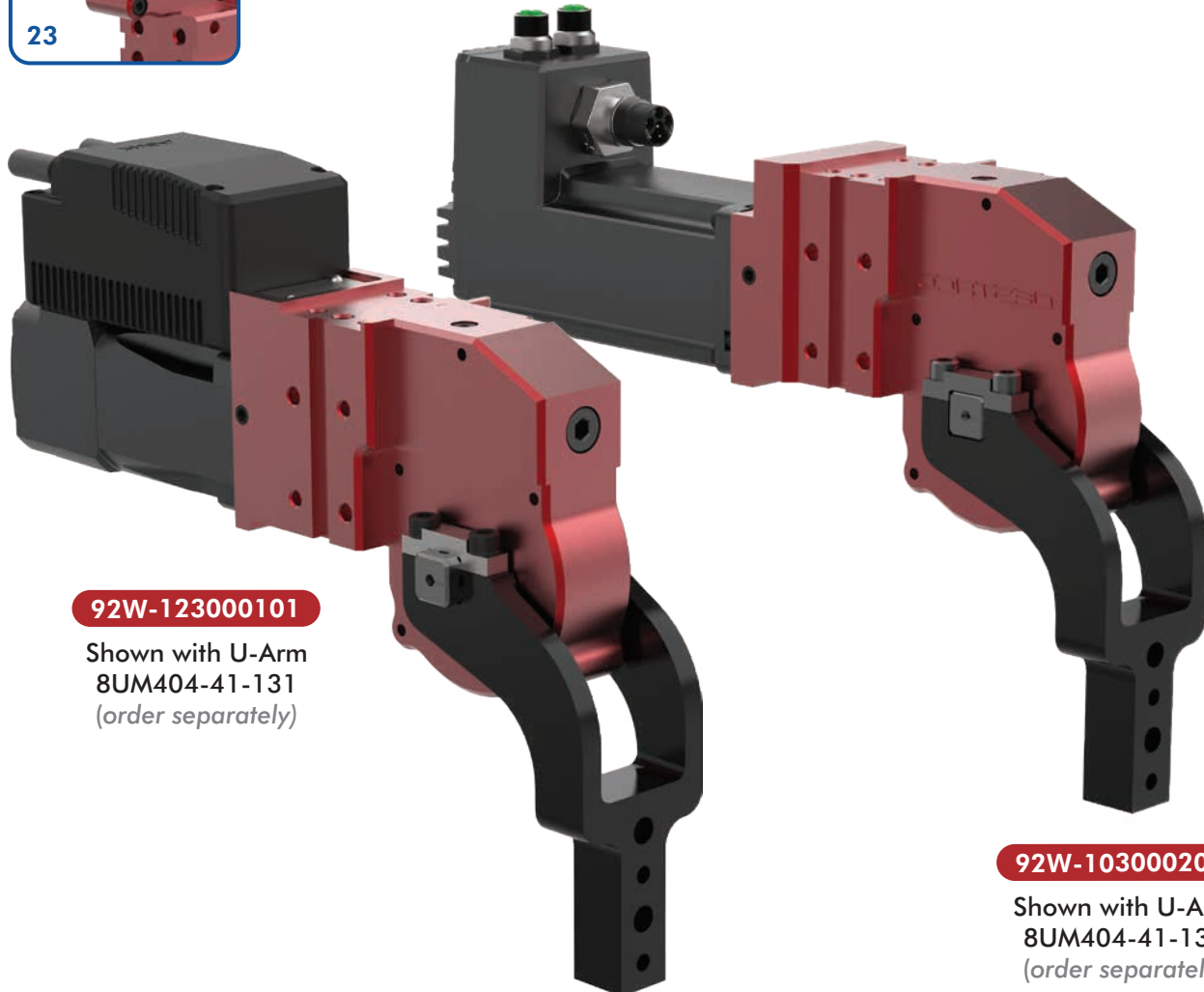
Clamp Arm Shaft	Shaft Length (L)
03	10 mm [0.39 in]
23	16 mm [0.63 in]



**Body Style**  
 for 400 V Motor Option 01 only  
 01 Compact Clamp Design  
 for 48 V Motor Option 02 only  
 02 Compact Clamp Design

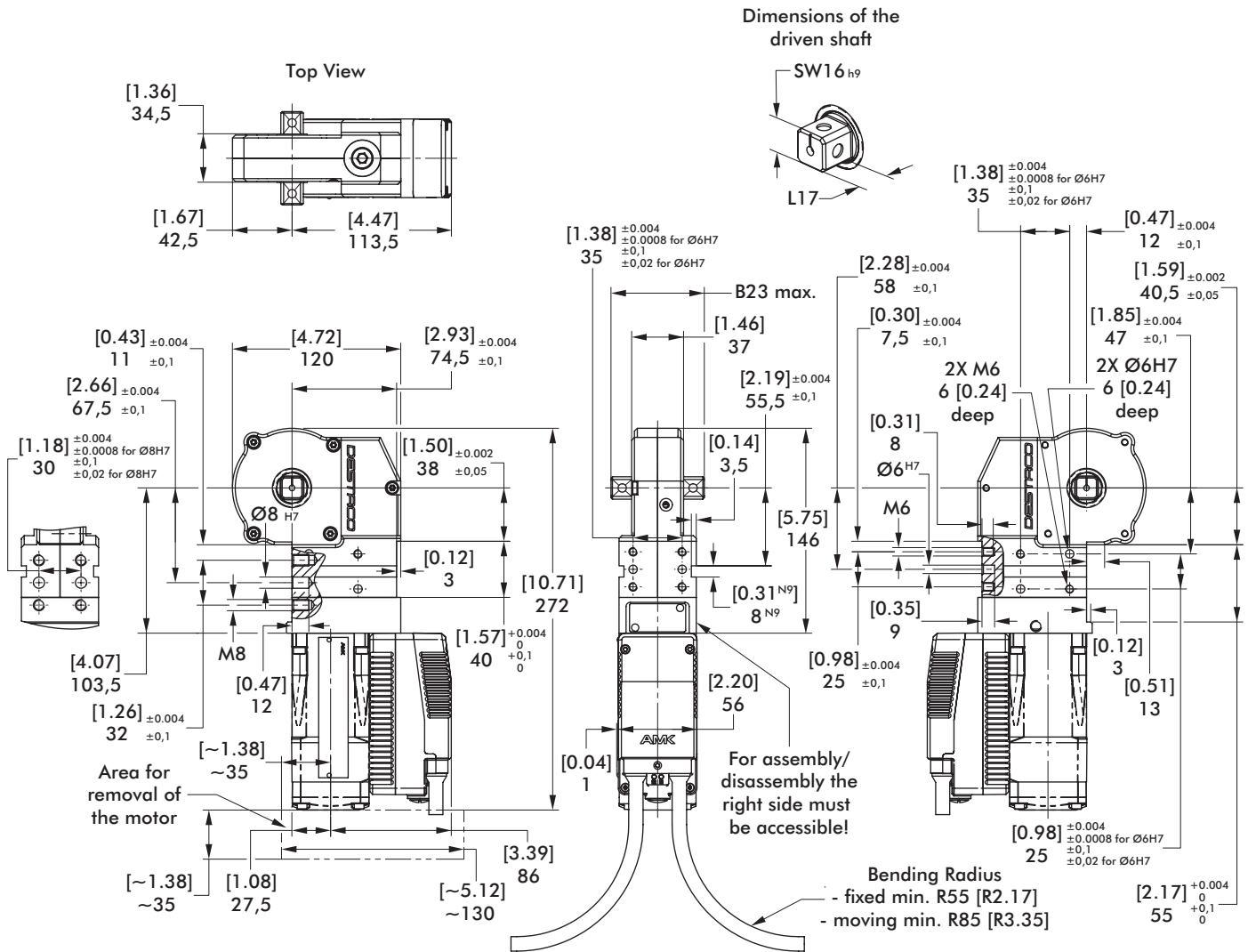


**Motor**  
 for Body Style Option 01 only  
 01 Servo Drive, Decentral 400 V  
 for Body Style Option 02 only  
 02 Servo Drive, Decentral 48 V



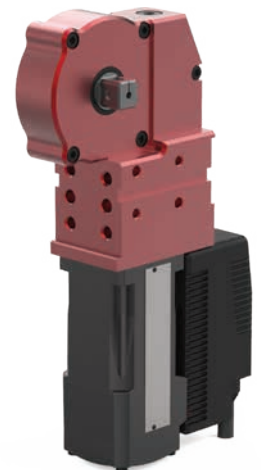
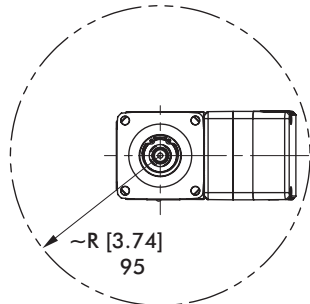
**92W-123000101**  
 Shown with U-Arm  
 8UM404-41-131  
 (order separately)

**92W-103000202**  
 Shown with U-Arm  
 8UM404-41-131  
 (order separately)



**Area of Interference:**  
Keep this area free for  
assembly/disassembly work!

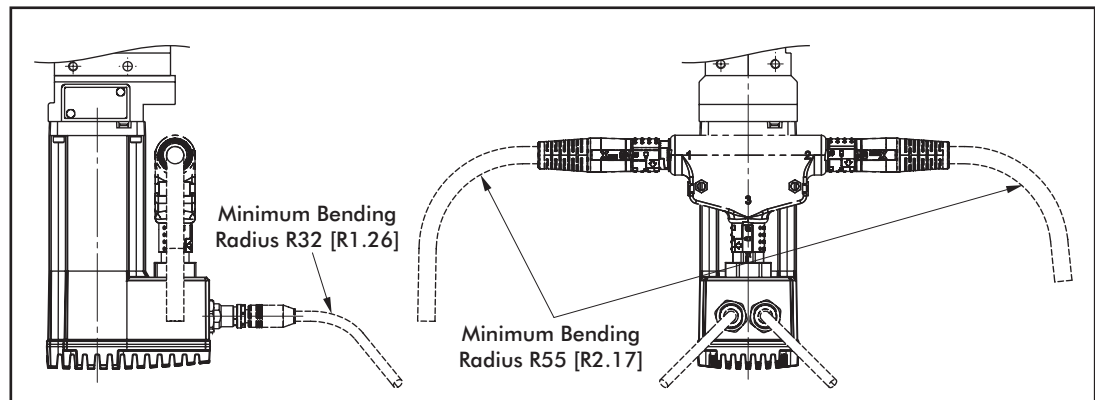
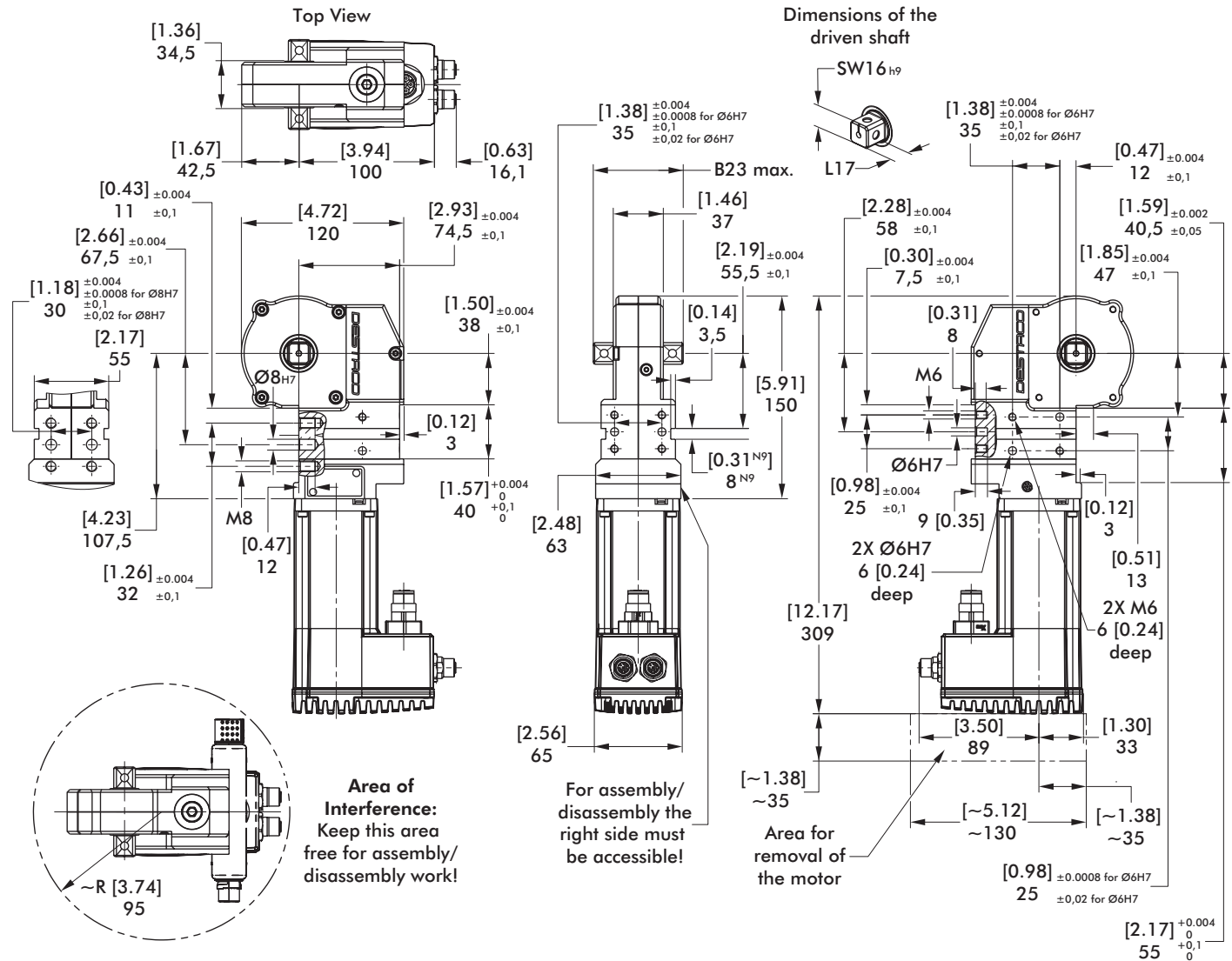
mm [INCH]  
THIRD ANGLE  
PROJECTION



Model	Max. Holding Torque Nm [ft-lb]	Max. Clamping Torque Nm [ft-lb]	Weight kg [lbs]	B23 Max.	L17
92W-103000101	[332]	[7.4-74]	[7.72]	54,5 [2.15]	10 [0.39]
92W-123000101	450	10-100	3,5	66,5 [2.62]	16 [0.63]

# 92W-1....0202

## Enclosed Electric Power Clamps | Smart Clamp | Dimensions | Technical Specifications

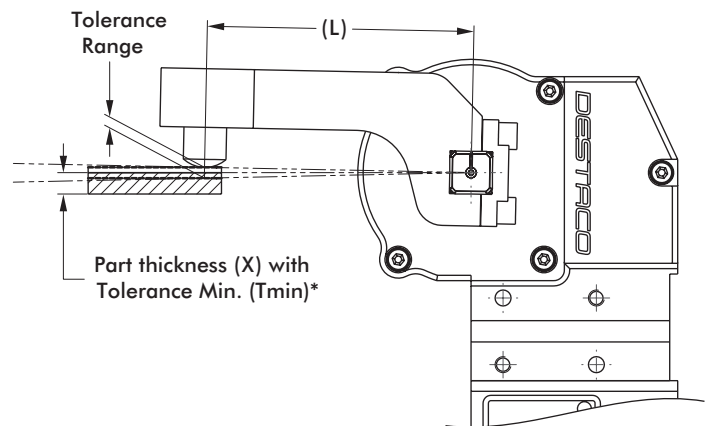


Model	Max. Holding Torque Nm [ft-lb]	Max. Clamping Torque Nm [ft-lb]	Weight kg [lbs]	B23 Max.	L17
92W-103000202	[332] 450	[7.4-89] 10-120	[7.93] 3,6	54,5 [2.15]	10 [0.39]
92W-123000202				66,5 [2.62]	16 [0.63]

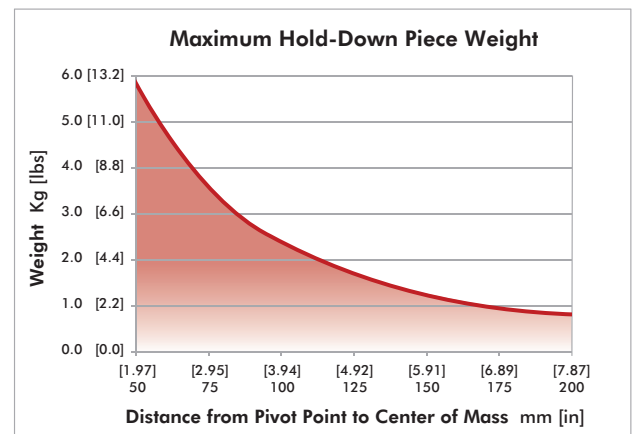
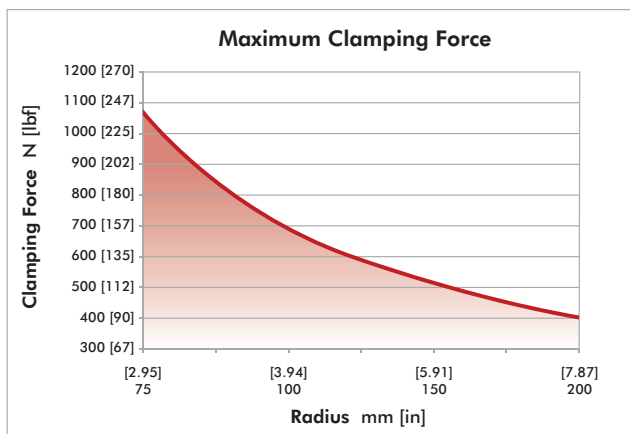
### Part Present Control and Tolerance Compensation

Distance (L) [in] mm	Part Thickness (X) Min. Tolerance (Tmin)* [in] mm	Tolerance Range [in] mm
[3.94 ±0.004] 100 ±0,1	[±0.0098] ±0,25	[0.019] 0,5
[5.91 ±0.004] 150 ±0,1	[±0.0138] ±0,35	[0.027] 0,7
[7.87 ±0.004] Max. 200 ±0,1 Max.	[±0.0177] ±0,45	[0.031] 0,9

\*Specification only as a guideline



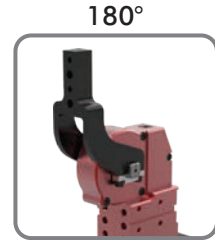
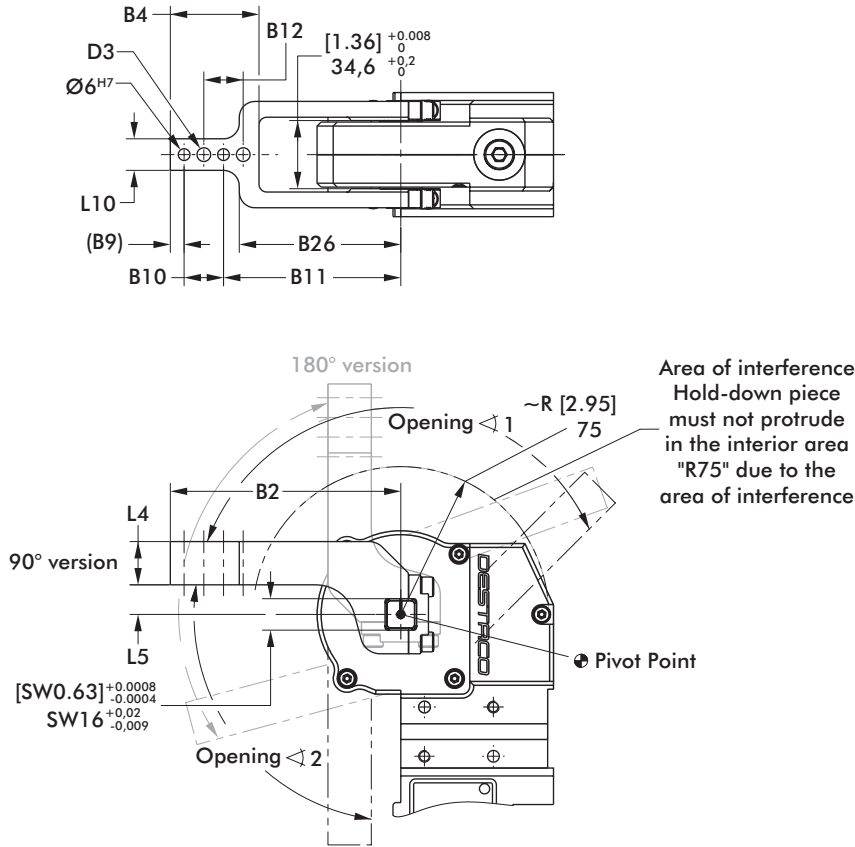
### Technical Specifications



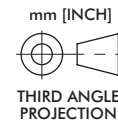
# 92W-1 U-ARMS CENTER (ALUMINUM)

Enclosed Electric Power Clamps | Dimensions | Technical Specifications

## U-Clamp Arm, Center



- 8UM404-00-117
- 8UM404E-15-117
- 8UM404E-15-144
- 8UM404E-25-117
- 8UM404E-45-107
- 8UM404-41-131



Arm Model No.	Max. Opening Angle for 90° Version		Max. Opening Angle for 180° Version		Weight kg [lbs]	B2	B4	B9	B10	B11	B12	B26	D3	L4	L5	L10
	<math>\sphericalangle 1</math>	<math>\sphericalangle 2</math>	<math>\sphericalangle 1</math>	<math>\sphericalangle 2</math>		[±0.0008] ±0,02	[±0.004] ±0,1	[±0.008] ±0,2	[±0.008] ±0,2	[±0.008] ±0,2	[±0.008] ±0,2	[±0.008] ±0,2	[±0.008] ±0,2	[±0.008] ±0,2	[±0.004] ±0,1	[±0.004] ±0,1
8UM404-00-117	135°	85°	55°	140°	[0.49] 0,22	[4.61] 117	[1.77] 45	[0.28] 7	[0.79] 20	[3.54] 90	[0.79] 20		[0.28] 7	[0.87] 22	0	[0.63] 16
8UM404E-15-117		70°	105°	[0.51] 0,23	[5.67] 144	[2.83] 72	[0.35] 9	[1.18] 30	[4.13] 105	[1.18] 30	[3.23] 82	[0.35] 9	[1.10] 28	[0.59] 15	[0.79] 20	
8UM404E-15-144		90°	90°	100°	[0.73] 0,33	[4.61] 117	[1.77] 45	[0.28] 7	[0.79] 20	[3.54] 90	[0.79] 20		[0.28] 7	[0.87] 22	[0.98] 25	[0.63] 16
8UM404E-25-117		110°	95°	[0.53] 0,24	[4.21] 107	[1.77] 45	[0.28] 7	[0.79] 20	[3.15] 80	[1.18] 30	[0.79] 20	[2.83] 72	[0.28] 7	[0.87] 22	[1.77] 45	[0.63] 16
8UM404E-45-107		105°	95°	[0.64] 0,29	[5.16] 131	[2.64] 67	[0.35] 9	[1.18] 30	[3.62] 92	[1.18] 30	[3.03] 77	[0.35] 9			[1.61] 41	[0.79] 20
8UM404-41-131		105°	95°	[0.64] 0,29	[5.16] 131	[2.64] 67	[0.35] 9	[1.18] 30	[3.62] 92	[1.18] 30	[3.03] 77	[0.35] 9			[1.61] 41	[0.79] 20

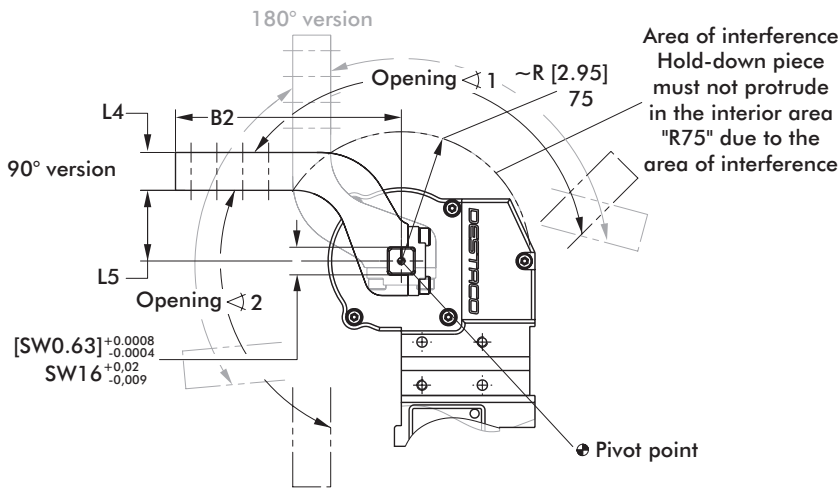
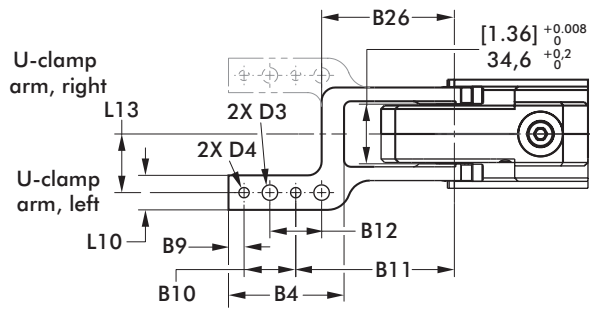
Dimensions = [in] mm



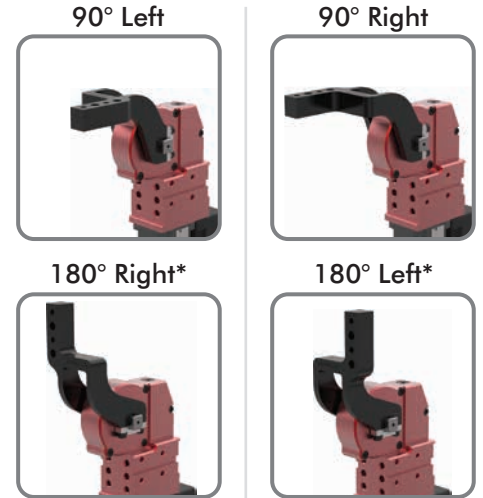
# 92W-1 U-ARMS OFFSET (ALUMINUM)

Enclosed Electric Power Clamps | Dimensions | Technical Specifications

## U-Clamp Arm, Offset



Area of interference  
Hold-down piece  
must not protrude  
in the interior area  
"R75" due to the  
area of interference



- 8UL404-00-117
  - 8UL404E-15-117
  - 8UL404E-25-117
  - 8UL404E-45-107
  - 8UL404E-15-144
  - 8UL404-41-131
- 8UR404-00-117
  - 8UR404E-15-117
  - 8UR404E-25-117
  - 8UR404E-45-107
  - 8UR404E-15-144
  - 8UR404-41-131

\*90° left/180° right uses same clamp arm.  
90° right/180° left uses same clamp arm.

mm [INCH]



THIRD ANGLE  
PROJECTION

Arm Model No. Left 90° / Right 180°	Arm Model No. Right 90° / Left 180°	Max. Opening Angle for 90° Version		Max. Opening Angle for 180° Version		Weight kg [lbs]
		$\sphericalangle 1$	$\sphericalangle 2$	$\sphericalangle 1$	$\sphericalangle 2$	
8UL404-00-117	8UR404-00-117	135°	85°	55°	140°	0,22 [0.49]
8UL404E-15-117	8UR404E-15-117		70°	105°	0,23 [0.51]	
8UL404E-25-117	8UR404E-25-117		90°	100°	0,24 [0.53]	
8UL404E-45-107	8UR404E-45-107		70°	105°	0,35 [0.77]	
8UL404E-15-144	8UR404E-15-144		105°	95°	0,30 [0.66]	
8UL404-41-131	8UR404-41-131		105°	95°		

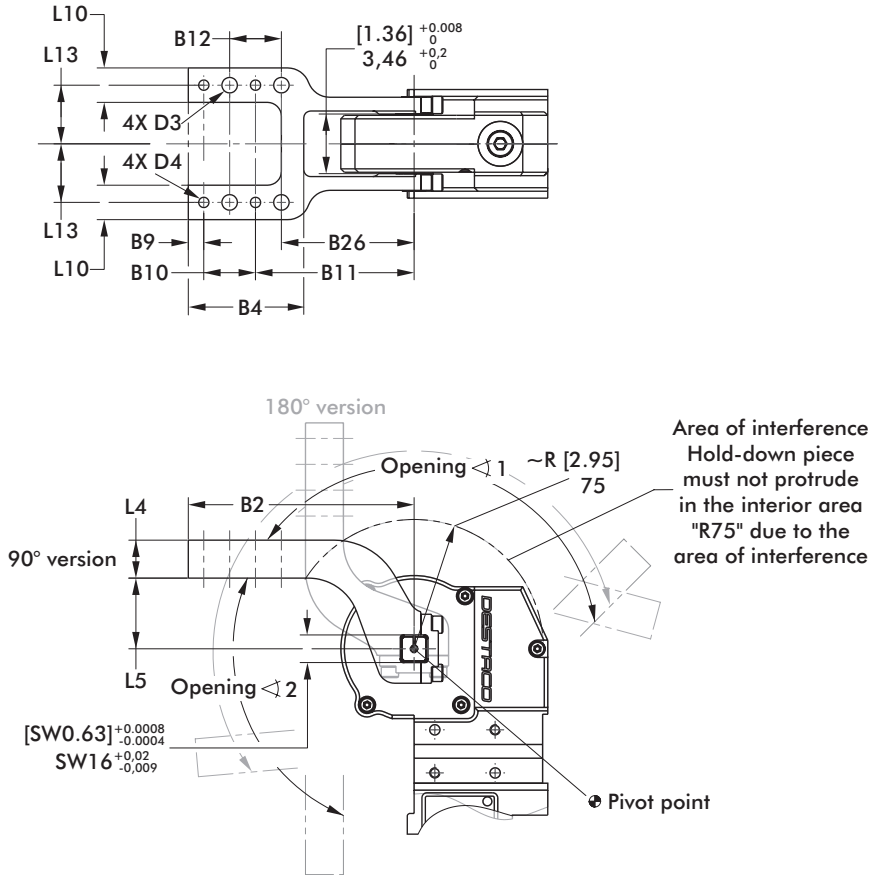
Arm Model No. Left 90° / Right 180°	Arm Model No. Right 90° / Left 180°	B2	B4	B9	B10	B11	B12	B26	L4	L5	$\varnothing$ D3	$\varnothing$ D4 H7	L10	L13
8UL404-00-117	8UR404-00-117									0				
8UL404E-15-117	8UR404E-15-117	[4.61] 117	[1.77] 45	[0.28] 7	[0.79] 20	[3.54] 90	[0.79] 20	[3.23] 82	[0.87] 22	[0.59] 15	[0.28] 7		[0.63] 16	[0.91] 23
8UL404E-25-117	8UR404E-25-117									[0.98] 25				
8UL404E-45-107	8UR404E-45-107	[4.21] 107				[3.15] 80		[2.83] 72		[1.77] 45		[0.24] 6		
8UL404E-15-144	8UR404E-15-144	[5.67] 144	[2.83] 72			[4.13] 105		[3.23] 82	[1.10] 28	[0.59] 15				[1.46] 37
8UL404-41-131	8UR404-41-131	[5.16] 131	[2.64] 67	[0.35] 9	[1.18] 30	[3.62] 92	[1.18] 30	[3.03] 77	[0.87] 22	[1.61] 41	[0.35] 9		[0.79] 20	[1.34] 34

Dimensions = [in] mm

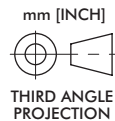
# 92W-1 H-ARMS (ALUMINUM)

Enclosed Electric Power Clamps | Dimensions | Technical Specifications

## H-Clamp Arms



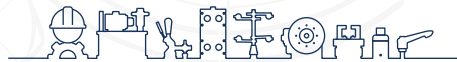
8UH404E-15-117  
8UH404E-15-144  
8UH404-41-131



Arm Model No.	Max. Opening Angle for 90° Version		Max. Opening Angle for 180° Version		Weight kg [lbs]
	∠1	∠2	∠1	∠2	
8UH404E-15-117			70°	105°	[0.57] 0,26
8UH404E-15-144	135°	90°			[1.01] 0,46
8UH404-41-131			105°	95°	[0.82] 0,37

Arm Model No.	B2	B4	B9	B10 ±0.0008 ±0,02	B11 ±0.004 ±0,1	B12 ±0.008 ±0,2	B26	L4 ±0.004 ±0,1	L5	D3	D4 H7	L10	L13 ±0.004 ±0,1
8UH404E-15-117	[4.61] 117	[1.77] 45	[0.28] 7	[0.79] 20	[3.54] 90	[0.79] 20	[3.23] 82	[0.87] 22	[0.59] 15	[0.28] 7		[0.63] 16	[0.91] 23
8UH404E-15-144	[5.67] 144	[2.83] 72	[0.35] 9	[1.18] 30	[4.13] 105	[1.18] 30		[1.10] 28		[0.35] 9	[0.24] 6	[0.79] 20	[1.46] 37
8UH404-41-131	[5.16] 131	[2.64] 67			[3.62] 92		[3.03] 77	[0.87] 22	[1.61] 41				[1.34] 34

Dimensions = [in] mm



inf @ /CESEHSA.com.mx

