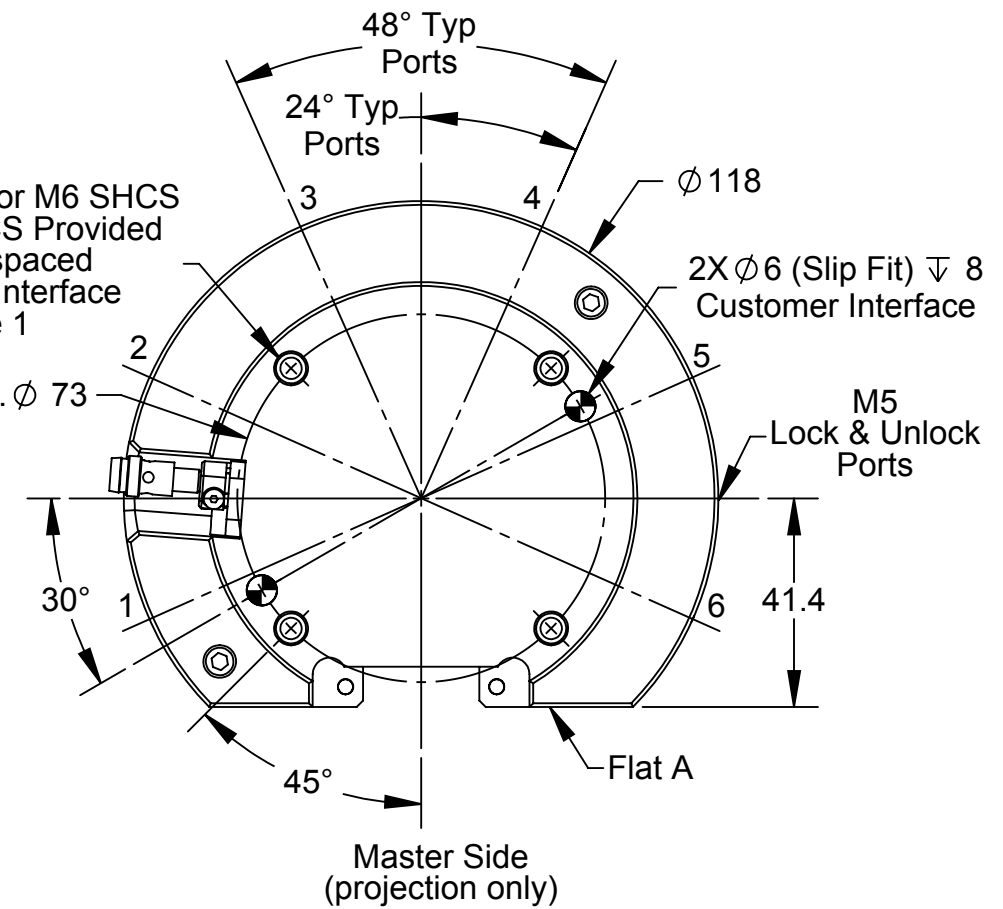
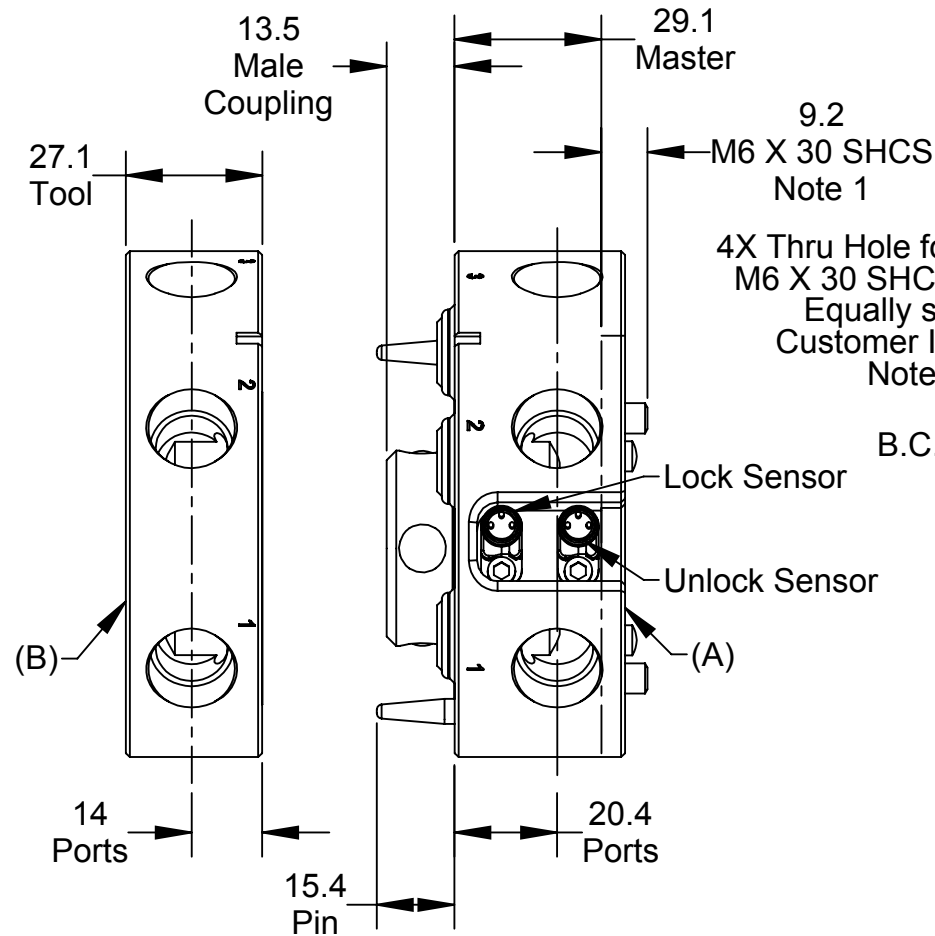
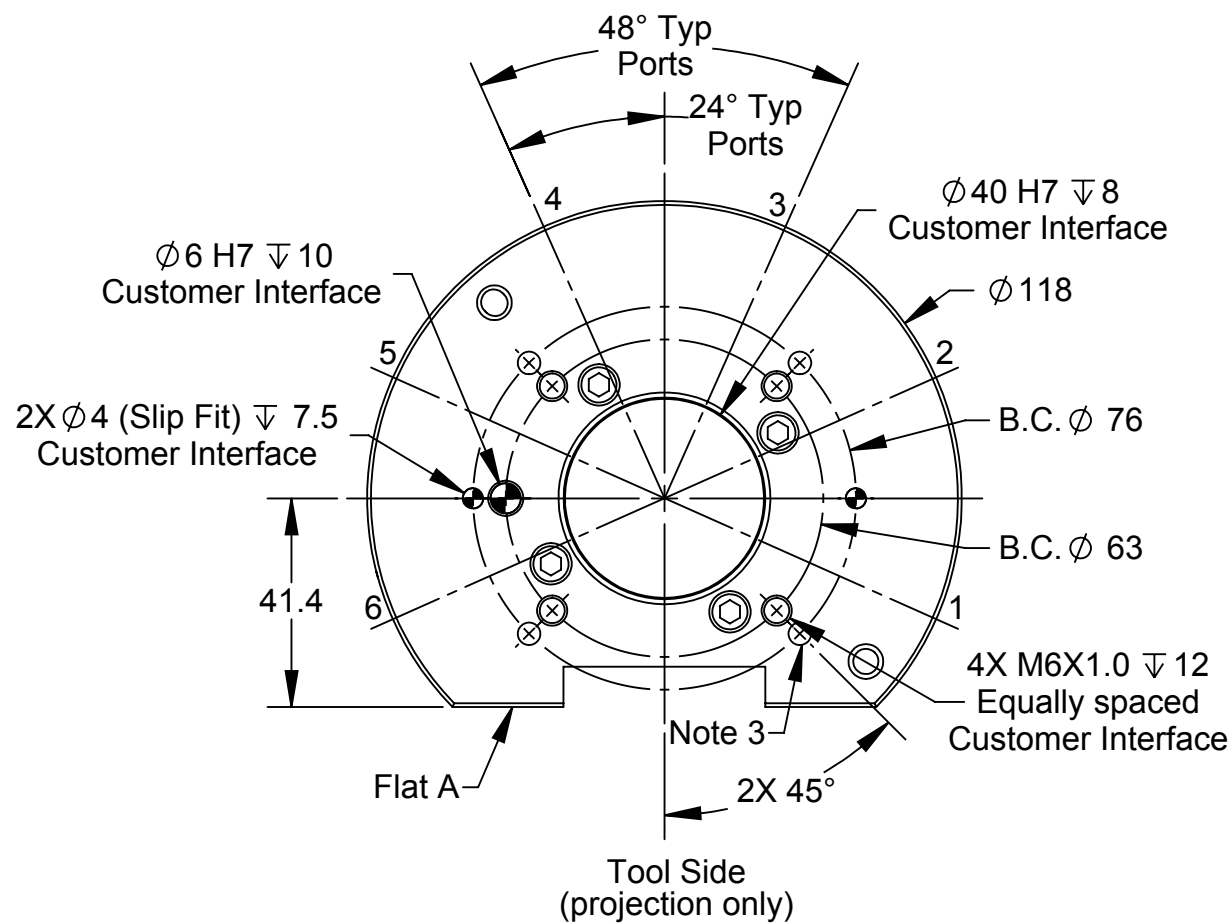
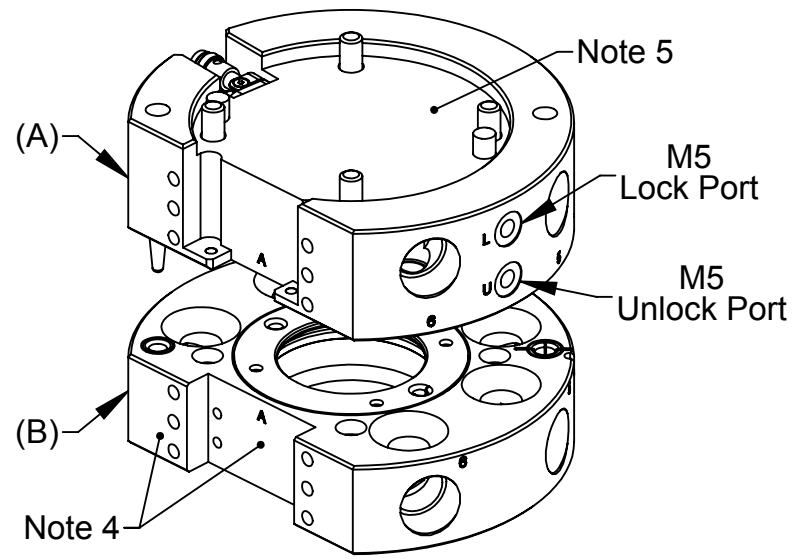
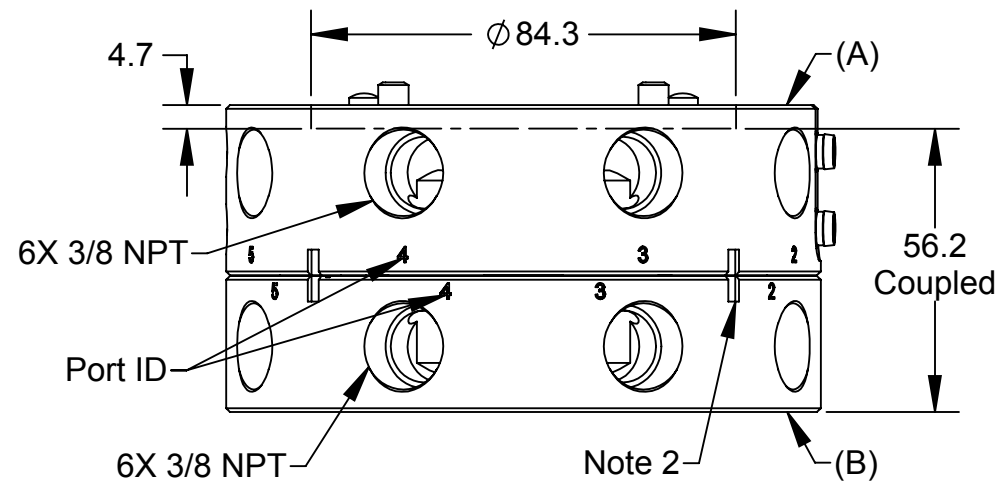


Rev.	Description	Initiator	Date
02	Eco 12904; QC's L/U sensing changed from SIP style to Integrated. Mounting patterns for Master and Tool have changed. Lock and Unlock ports have changed from 1/8 NPT to M5 and have changed locations.	MJG	12/22/2014



Part Numbers Shown:
 (A) Master: 9120-022M-000-000-SM
 (B) Tool: 9120-022T-000-000

- Notes:
1. Master mounting hardware provided.
 2. Orientation marks are provided to assist in robot teaching.
 3. Optional Bolt Down for Tool Side: (4) Holes C'Bored from opposite side 4.4 deep for M4.
 4. Flat A accomodates a wider selection of modules due to two types of module interfaces.
 5. Interface plates are available to adapt the Tool Changer to specific mounting patterns.
 6. 'SM' on end of Master part number indicates PNP quick connect Lock and Unlock sensors.
 7. Other sensor options are available.

NOTES: UNLESS OTHERWISE SPECIFIED.

DO NOT SCALE DRAWING. ALL DIMENSIONS ARE IN MILLIMETERS.



3rd ANGLE PROJECTION

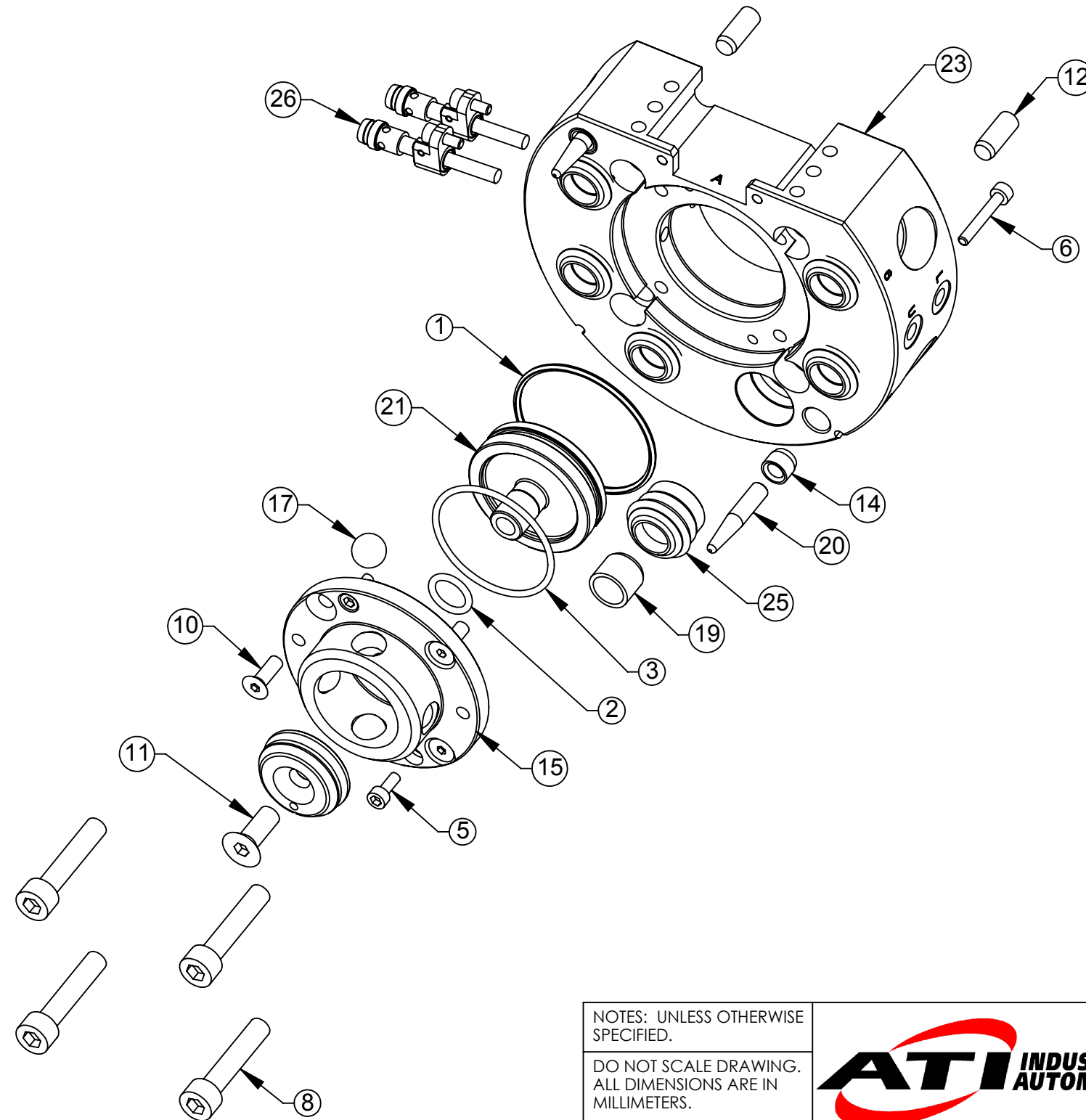


PROPERTY OF ATI INDUSTRIAL AUTOMATION, INC. NOT TO BE REPRODUCED IN ANY MANNER EXCEPT ON ORDER OR WITH PRIOR WRITTEN AUTHORIZATION OF ATI.

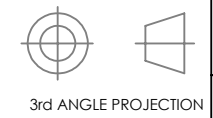
DRAWN BY: M. Gala, 3/25/2014		TITLE	
CHECKED BY: K. Zachary, 4/3/2014		QC-22 Tool Changer Drawing	
PROJECT # 110908-1	SHEET 1 OF 3	SCALE 2:3	REVISION 02

Rev.	Description	Initiator	Date
-	See Sheet1	-	-

QC-22 Master Assembly



NOTES: UNLESS OTHERWISE SPECIFIED.
DO NOT SCALE DRAWING. ALL DIMENSIONS ARE IN MILLIMETERS.



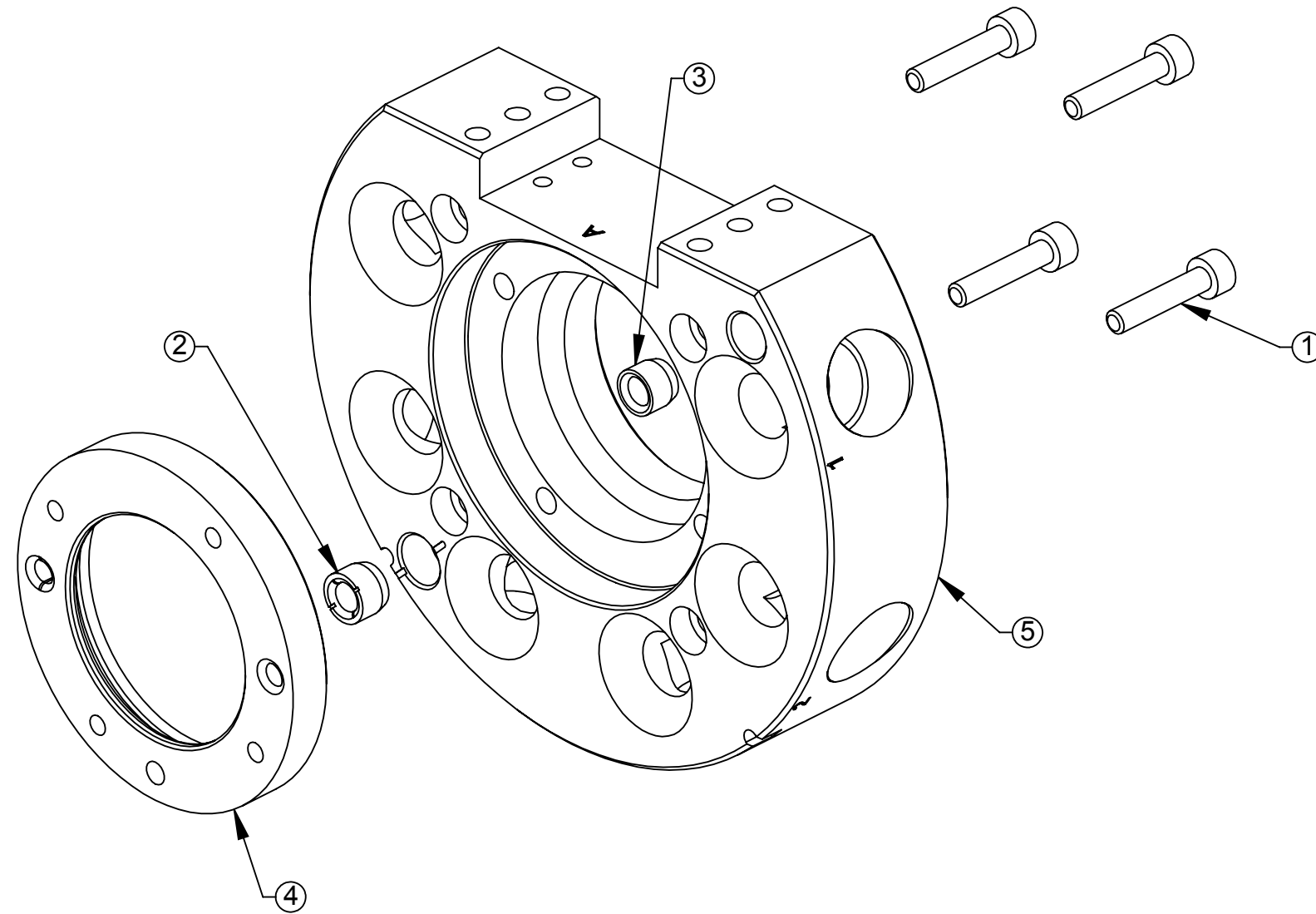
1031 Goodworth Drive, Apex, NC 27539, USA
Tel: +1.919.772.0115 Email: info@ati-ia.com
Fax: +1.919.772.8259 www.ati-ia.com
ISO 9001 Registered Company

PROPERTY OF ATI INDUSTRIAL AUTOMATION, INC. NOT TO BE REPRODUCED IN ANY MANNER EXCEPT ON ORDER OR WITH PRIOR WRITTEN AUTHORIZATION OF ATI.

DRAWN BY: M. Gala, 3/25/2014		TITLE	
CHECKED BY: K. Zachary, 4/3/2014		QC-22 Tool Changer Drawing	
PROJECT # 110908-1	SHEET 2 OF 3	SCALE 2:3	SIZE B
		DRAWING NUMBER 9630-20-022	REVISION 02

Rev.	Description	Initiator	Date
-	See Sheet1	-	-

QC-22 Tool Assembly



NOTES: UNLESS OTHERWISE SPECIFIED.

DO NOT SCALE DRAWING. ALL DIMENSIONS ARE IN MILLIMETERS.



3rd ANGLE PROJECTION



PROPERTY OF ATI INDUSTRIAL AUTOMATION, INC. NOT TO BE REPRODUCED IN ANY MANNER EXCEPT ON ORDER OR WITH PRIOR WRITTEN AUTHORIZATION OF ATI.

DRAWN BY: M. Gala, 3/25/2014

CHECKED BY: K. Zachary, 4/3/2014

TITLE
QC-22 Tool Changer Drawing

PROJECT # 110908-1 SHEET 3 OF 3

SCALE	SIZE	DRAWING NUMBER	REVISION
1:1	B	9630-20-022	02