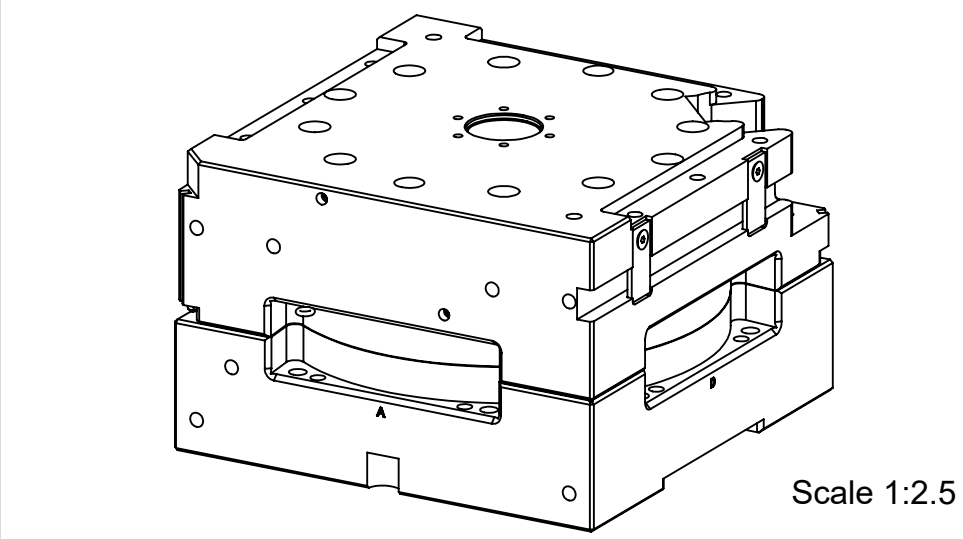
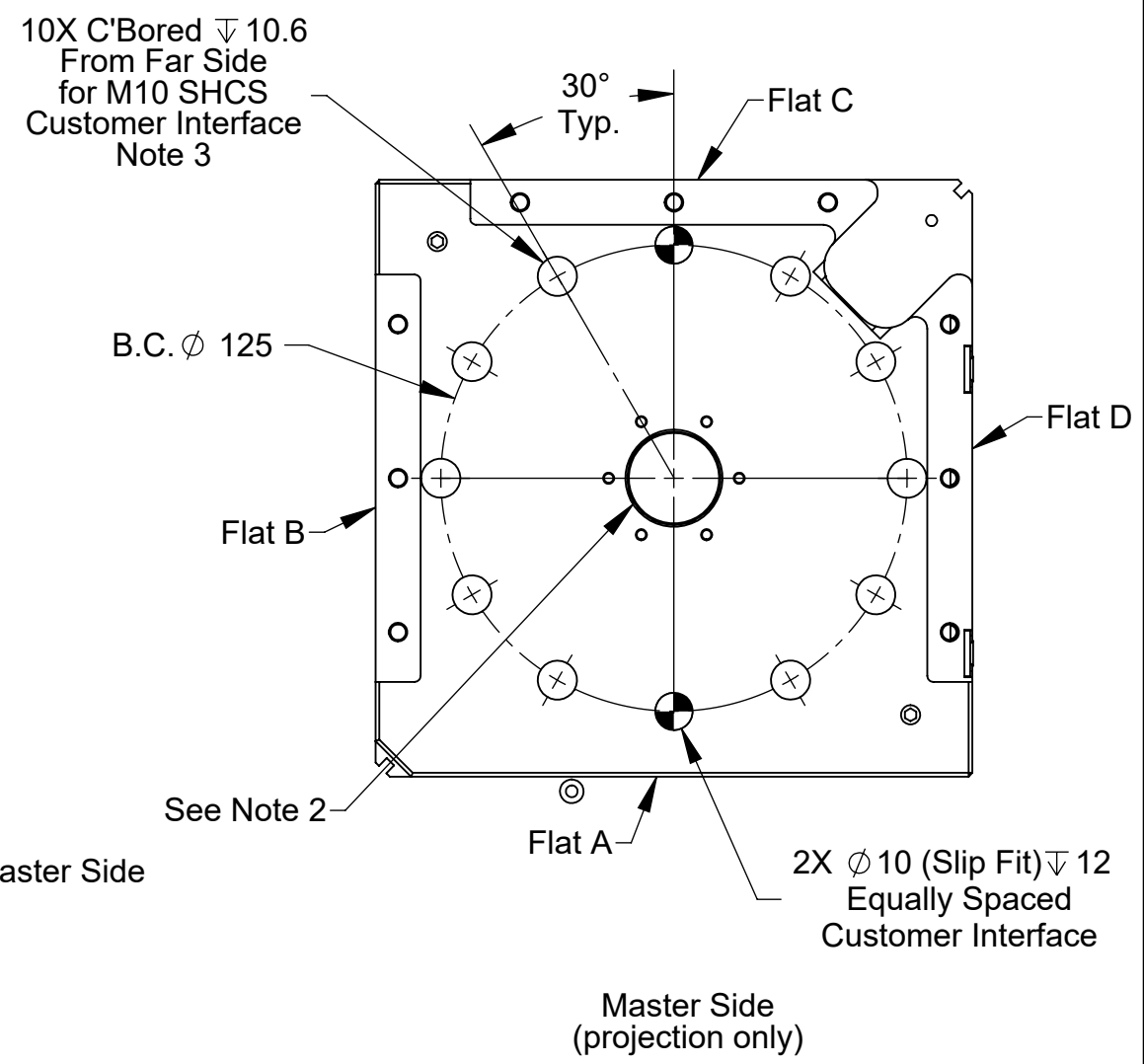
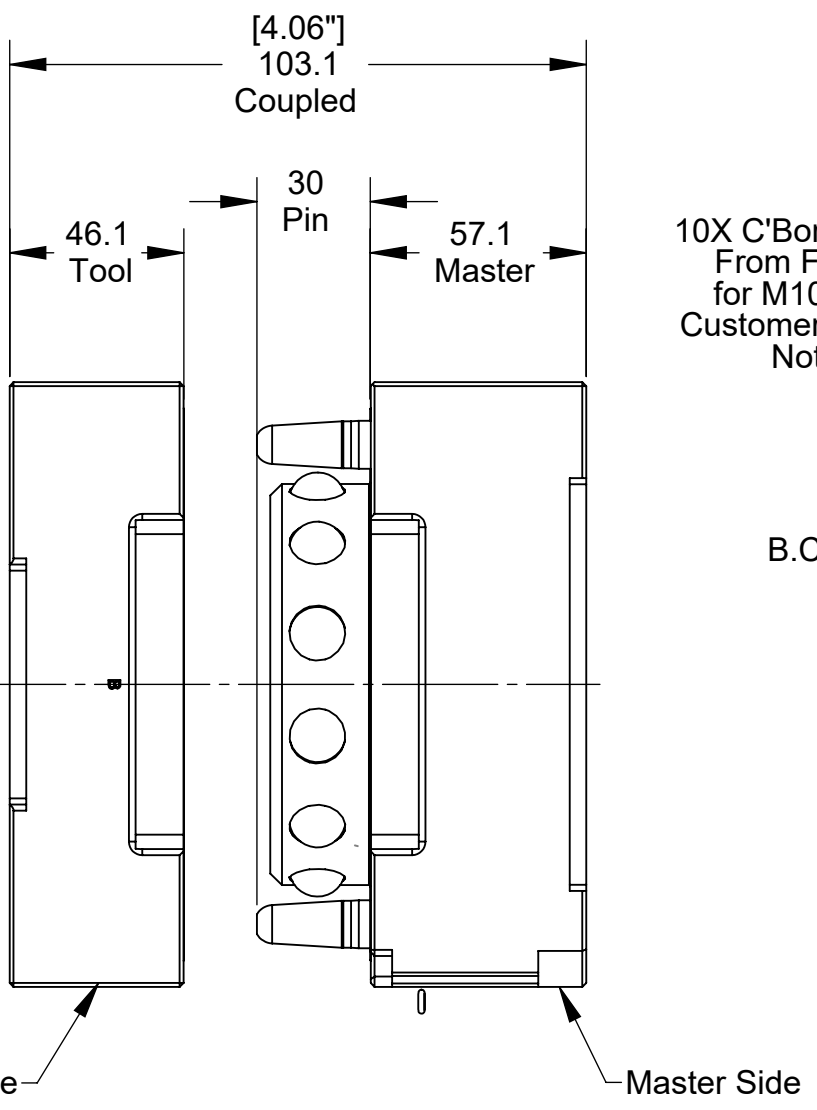
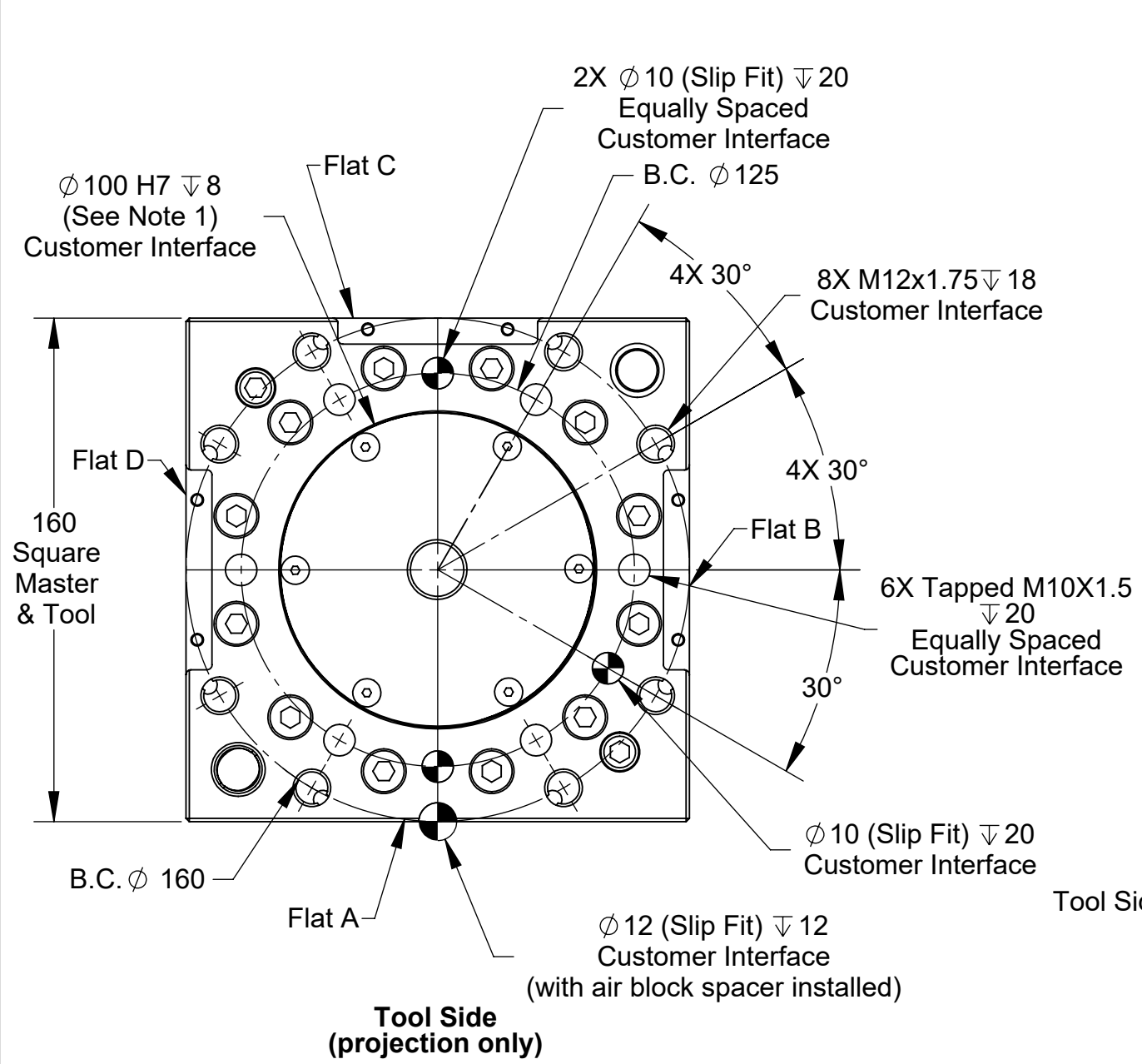


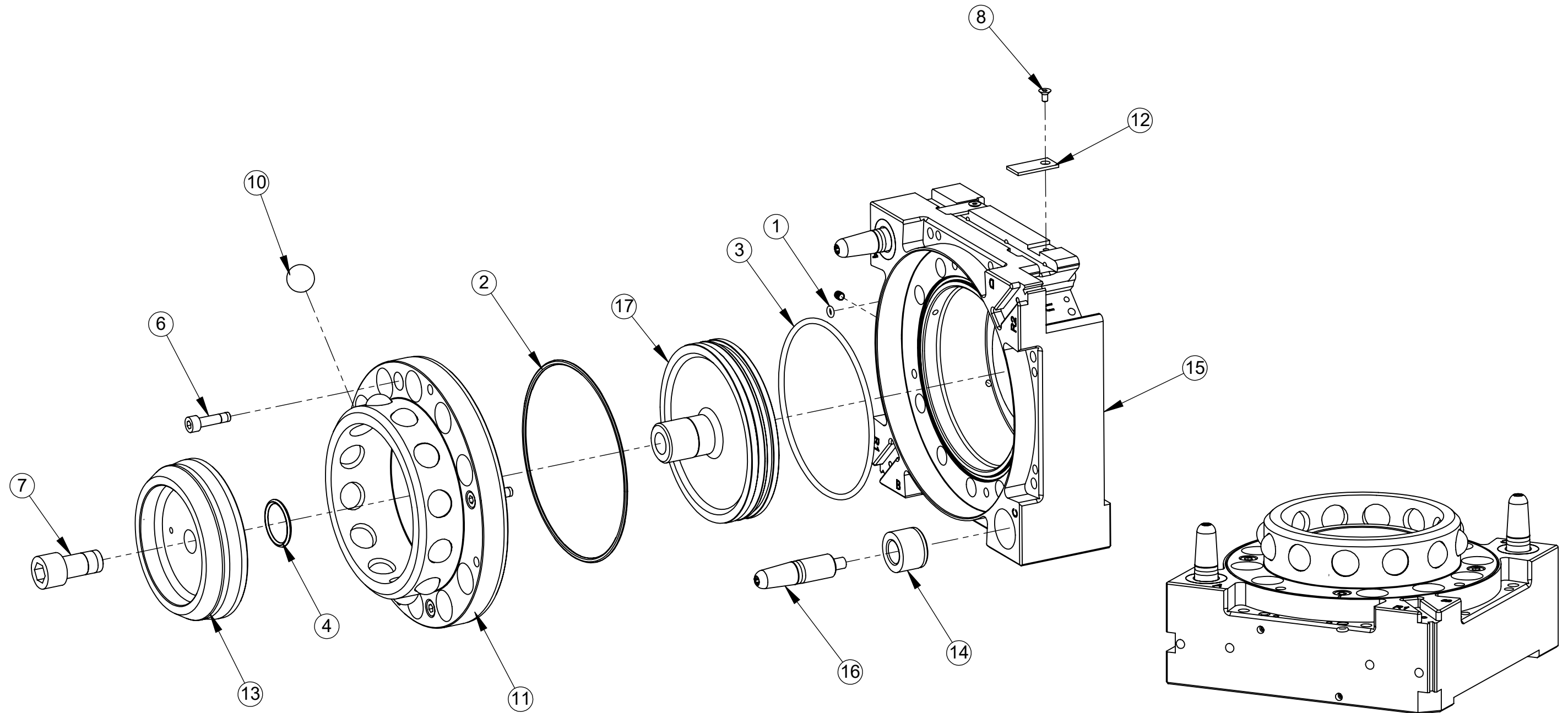
Rev.	Description	Initiator	Date
09	ECO 21234; Updated to reflect adding the 9005-20-1335 tool / race cover	DS	2/6/2023



- Notes:
- Optional Master side mounting bosses available.
 - QC max static moment rating $M_{xy}=2710Nm$, assuming all 10 SHCS are used.
QC moment rating $M_{xy}=1355Nm$, if 6 fasteners are used on master.

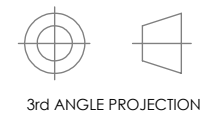
NOTES: UNLESS OTHERWISE SPECIFIED.				PROPERTY OF ATI INDUSTRIAL AUTOMATION, INC. NOT TO BE REPRODUCED IN ANY MANNER EXCEPT ON ORDER OR WITH PRIOR WRITTEN AUTHORIZATION OF ATI.	
DO NOT SCALE DRAWING. ALL DIMENSIONS ARE IN MILLIMETERS.					
DRAWN BY: D. Swanson 1/22/09		TITLE		QC-210 Base Tool Changer	
CHECKED BY: D. Norton 6/4/09		SCALE		SIZE	DRAWING NUMBER
PROJECT #		SHEET 1 OF 3		B	9630-20-210
3rd ANGLE PROJECTION		REVISION		09	

QC-210 Master Assembly



NOTES: UNLESS OTHERWISE SPECIFIED.

DO NOT SCALE DRAWING. ALL DIMENSIONS ARE IN MILLIMETERS.

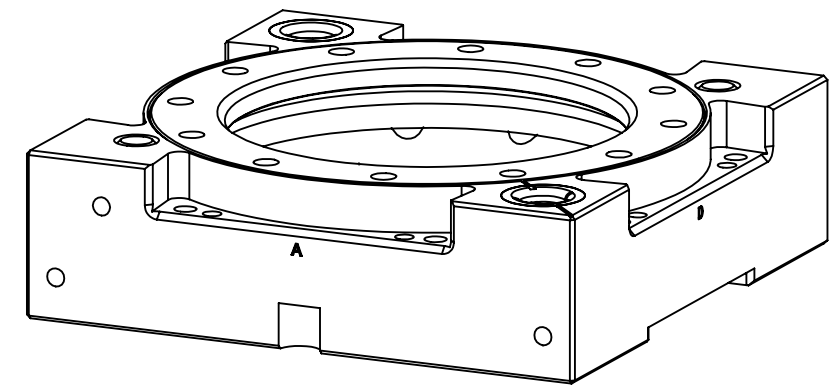
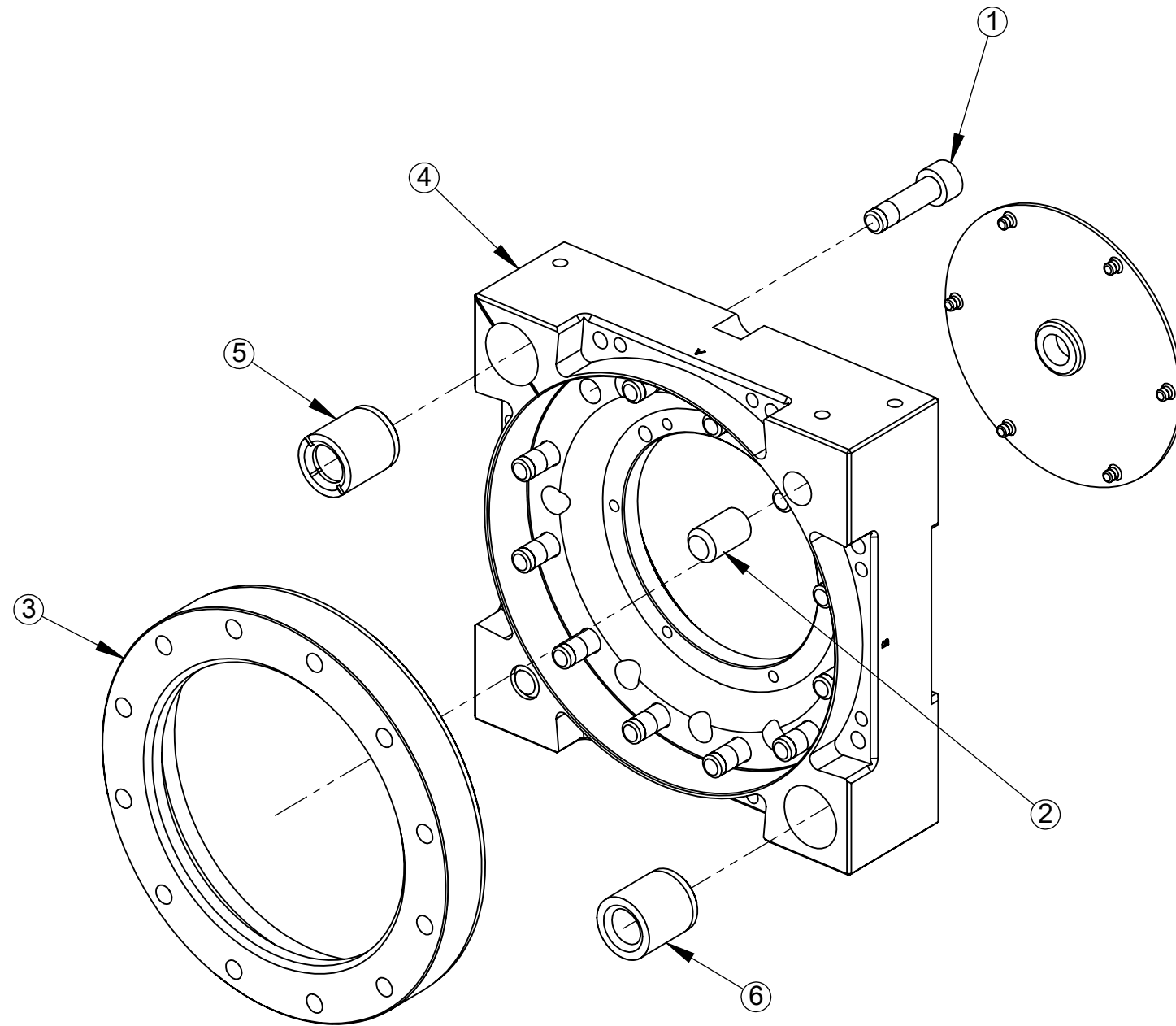


1031 Goodworth Drive, Apex, NC 27539, USA
 Tel: +1.919.772.0115 Email: info@ati-ia.com
 Fax: +1.919.772.8259 www.ati-ia.com
 ISO 9001 Registered Company

PROPERTY OF ATI INDUSTRIAL AUTOMATION, INC. NOT TO BE REPRODUCED IN ANY MANNER EXCEPT ON ORDER OR WITH PRIOR WRITTEN AUTHORIZATION OF ATI.

DRAWN BY: D. Swanson 1/22/09		TITLE	
CHECKED BY: D. Norton 6/4/09		QC-210 Base Tool Changer	
PROJECT #	SHEET 2 OF 3	SCALE	SIZE
		1:2.25	B
		DRAWING NUMBER	REVISION
		9630-20-210	09

QC-210 Tool Assembly



NOTES: UNLESS OTHERWISE SPECIFIED.

DO NOT SCALE DRAWING. ALL DIMENSIONS ARE IN MILLIMETERS.



3rd ANGLE PROJECTION

PROPERTY OF ATI INDUSTRIAL AUTOMATION, INC. NOT TO BE REPRODUCED IN ANY MANNER EXCEPT ON ORDER OR WITH PRIOR WRITTEN AUTHORIZATION OF ATI.

DRAWN BY: D. Swanson 1/22/09		TITLE		
CHECKED BY: D. Norton 6/4/09		QC-210 Base Tool Changer		
PROJECT #	SHEET 3 OF 3	SCALE	SIZE	DRAWING NUMBER
		1:2	B	9630-20-210
				REVISION
				09