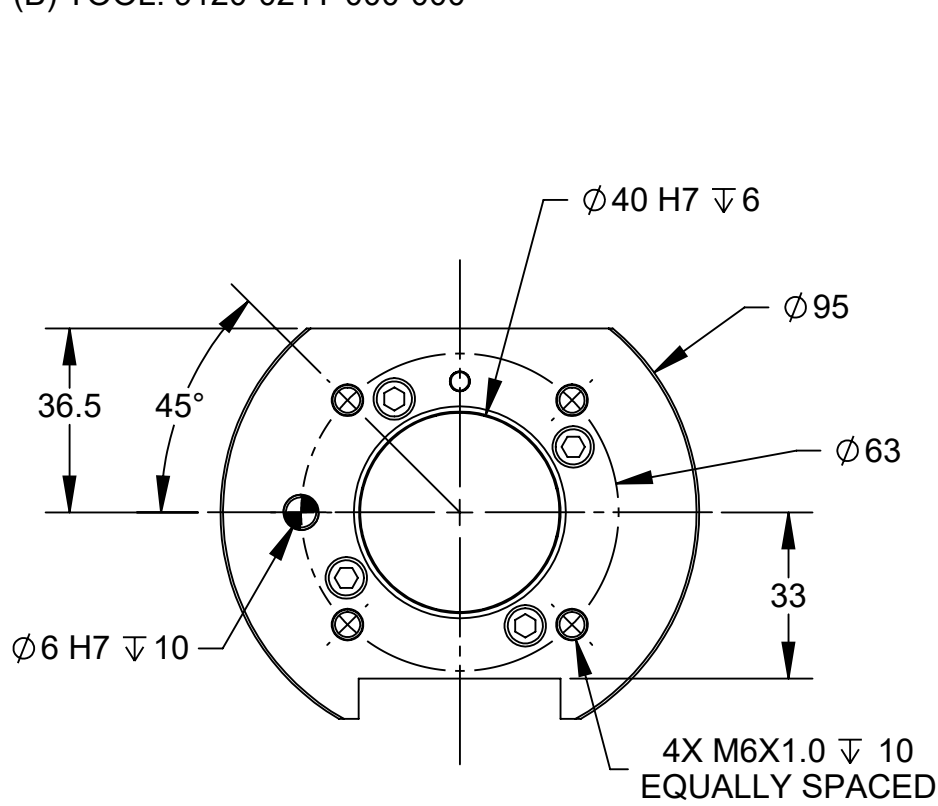
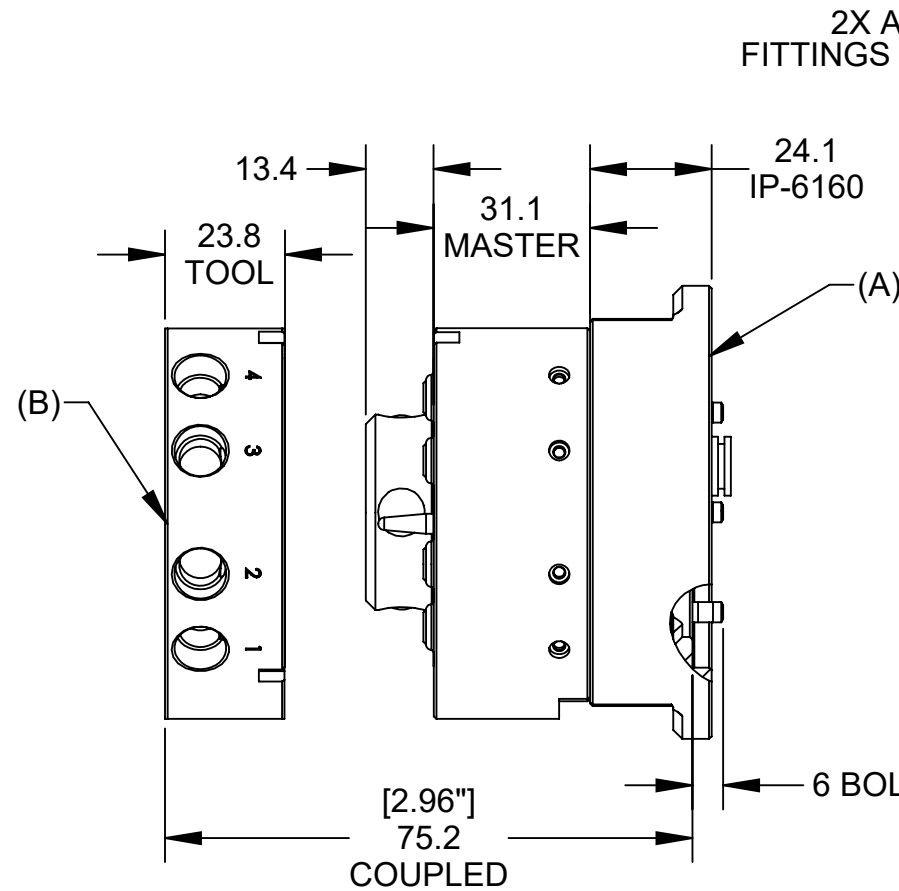


PART NUMBERS:
 (A) MASTER 9120-021HM-000-000-SX-6160
 (B) TOOL: 9120-021T-000-000

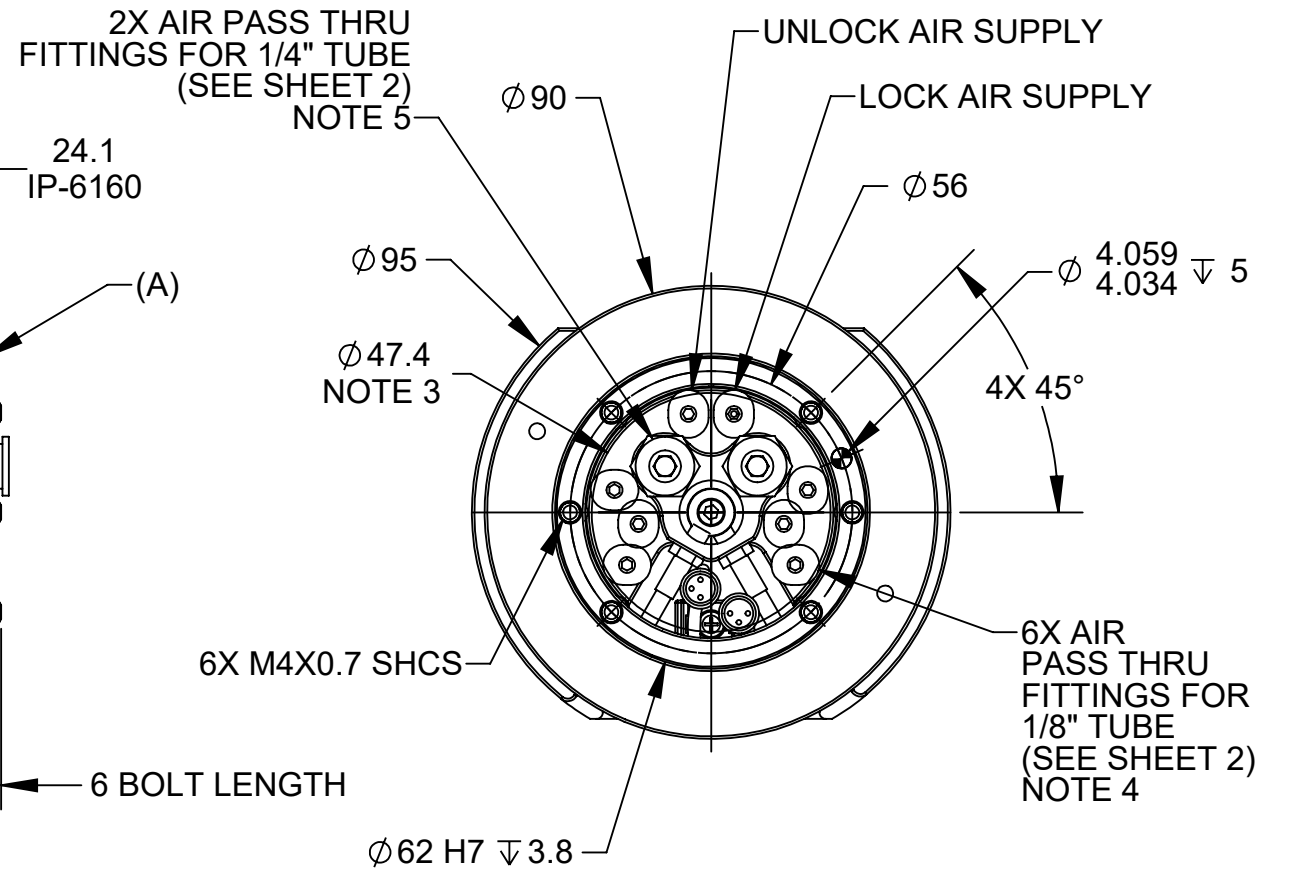
REV.	DESCRIPTION	INITIATOR	DATE
02	Eco 19304; Release Drawing	CF	9/2/2020



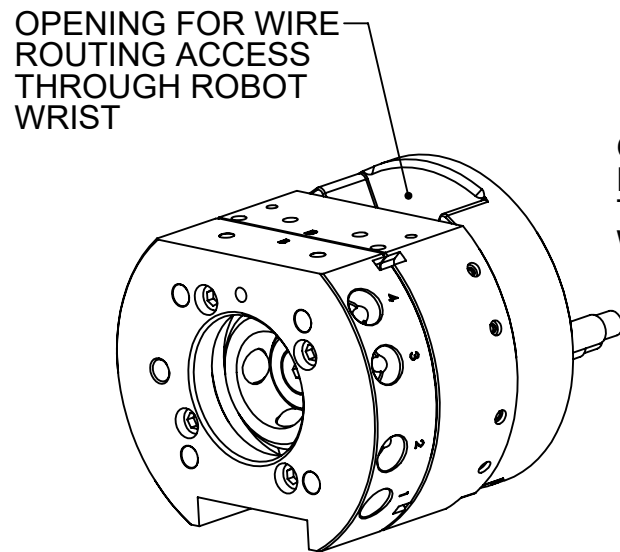
TOOL SIDE



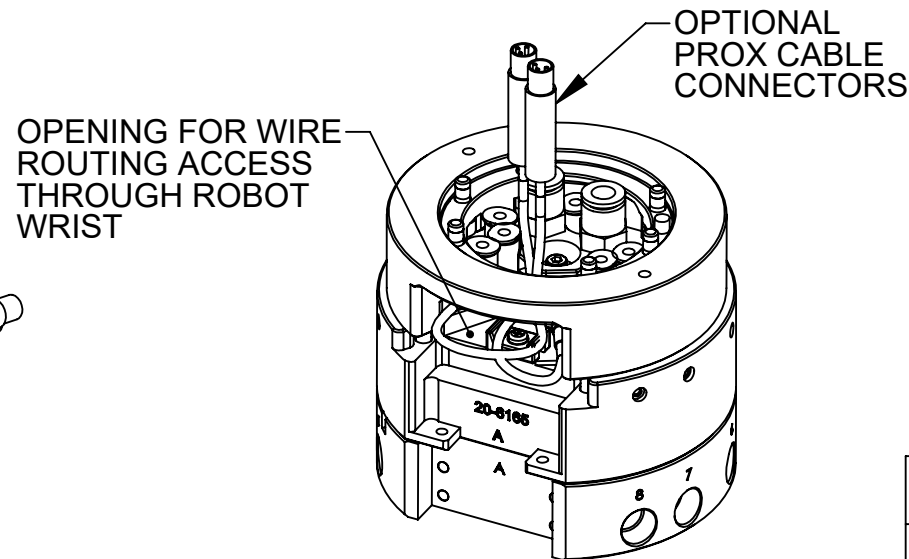
SIDE VIEW UNCOUPLED



MASTER SIDE



OPENING FOR WIRE ROUTING ACCESS THROUGH ROBOT WRIST



OPENING FOR WIRE ROUTING ACCESS THROUGH ROBOT WRIST

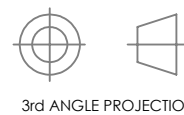
OPTIONAL PROX CABLE CONNECTORS

NOTES:

1. MASTER SIDE MOUNTING HARDWARE PROVIDED.
2. DRAWING SHOWS A PROPOSED MASTER SIDE ASSEMBLY FOR DIRECT MOUNT TO HOLLOW WRIST ROBOTS.
3. DIMENSION INDICATES THE PERIMETER FOR PNEUMATIC FITTINGS. COMPONENTS WILL CLEAR THE 50mm HOLLOW WRIST DIMENSION.
4. TUBE FITTING CONNECTION TO MASTER TOOL CHANGER BODY: M6X1.0 TAP 7.62 VENDOR PN: PISCO POC 1/8-M6M
5. TUBE FITTING CONNECTION TO MASTER TOOL CHANGER BODY: 1/8 NPT. VENDOR PN: CAMOZZI 6510 04-02.
6. 'SX' IN THE MASTER PART NUMBER DESIGNATES LOCK/UNLOCK SENSING VARIOUS OPTIONS ARE AVAILABLE
7. SHOWN WITH IP-6160 INTERFACE PLATE, IP'S FOR OTHER PATTERNS AVAILABLE UPON REQUEST.
8. CONTACT ATI FOR FULL PART NUMBERS AND LIST OF OPTIONS.

NOTES: UNLESS OTHERWISE SPECIFIED.

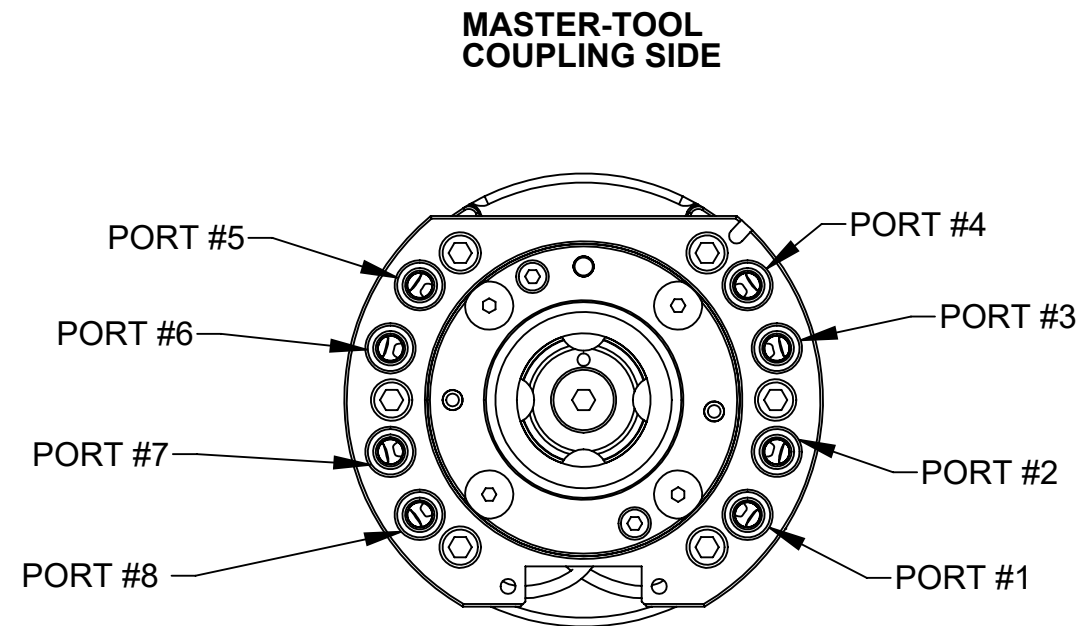
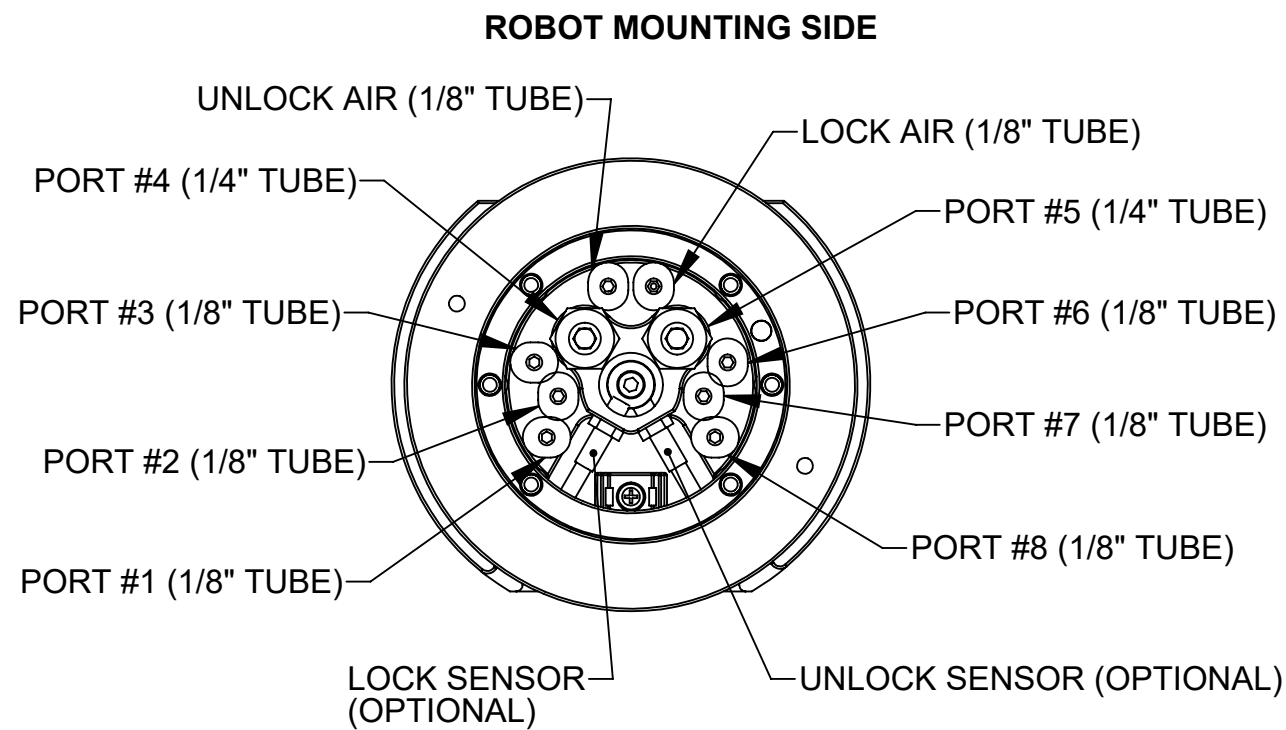
DO NOT SCALE DRAWING. ALL DIMENSIONS ARE IN MILLIMETERS.



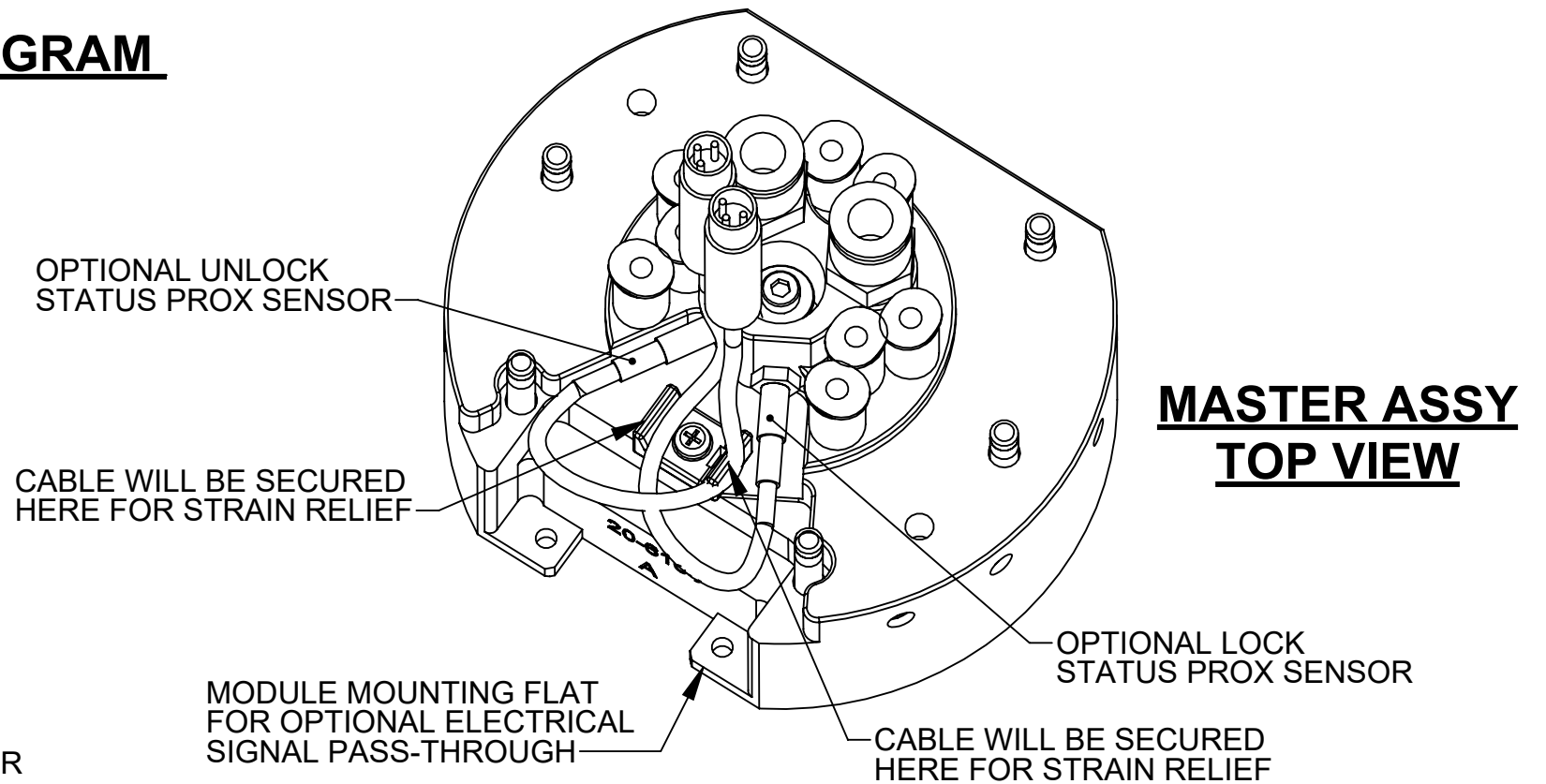
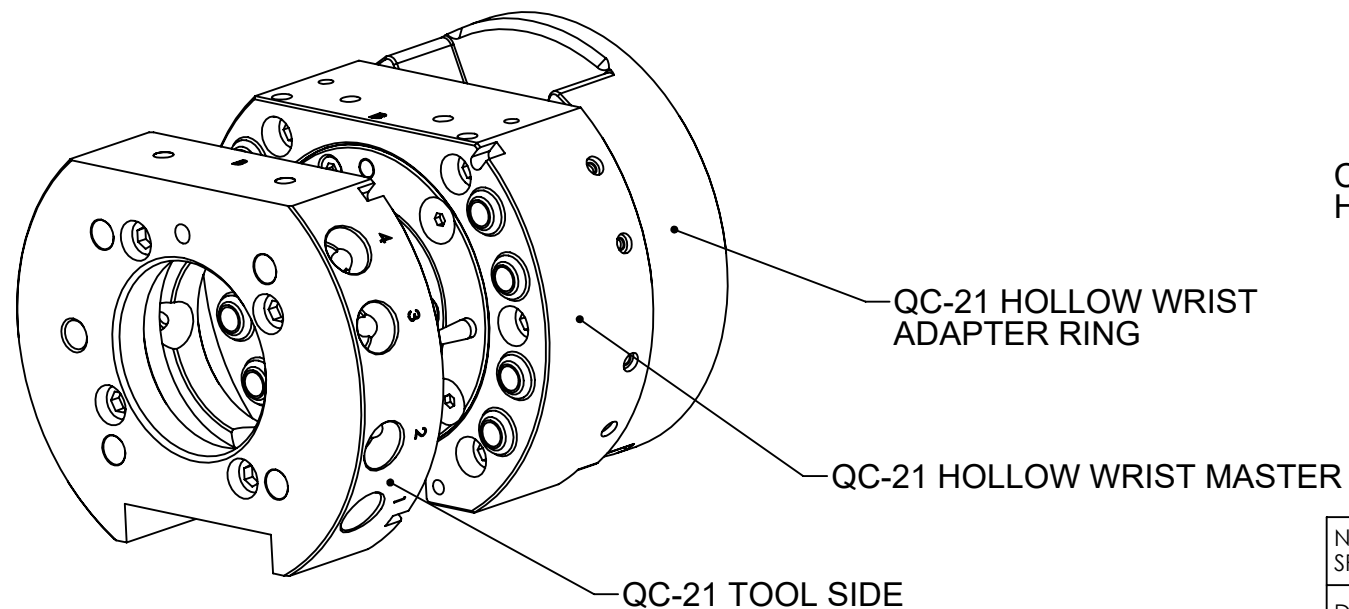
3rd ANGLE PROJECTION



DRAWN BY: N. BADER, 7/30/2020		TITLE	
CHECKED BY: D. WAGNER, 8/4/2020		QC-21 HOLLOW WRIST TOOL CHANGER	
PROJECT # -	SHEET 1 OF 4	SCALE	REVISION
		2:3	01
		SIZE	DRAWING NUMBER
		B	9630-20-021HM

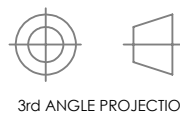


AIR LINE CONNECTION DIAGRAM



NOTES: UNLESS OTHERWISE SPECIFIED.

DO NOT SCALE DRAWING. ALL DIMENSIONS ARE IN MILLIMETERS.



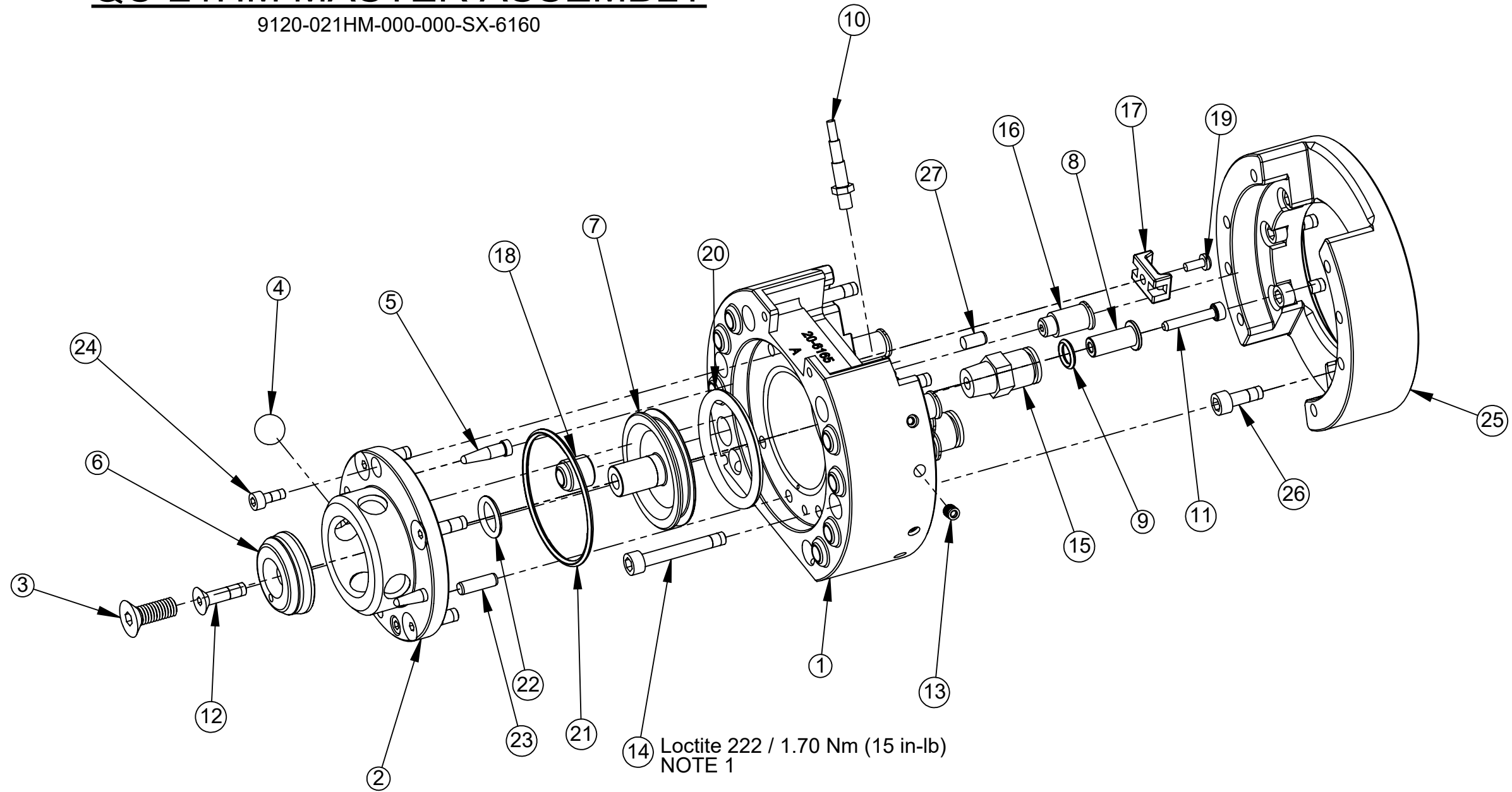
1031 Goodworth Drive, Apex, NC 27539, USA
 Tel: +1.919.772.0115 www.ati-ia.com
 Fax: +1.919.772.8259 ISO 9001 Registered Company

PROPERTY OF ATI INDUSTRIAL AUTOMATION, INC. NOT TO BE REPRODUCED IN ANY MANNER EXCEPT ON ORDER OR WITH PRIOR WRITTEN AUTHORIZATION OF ATI.

DRAWN BY: N. BADER, 7/30/2020		TITLE		
CHECKED BY: D. WAGNER, 8/4/2020		QC-21 HOLLOW WRIST TOOL CHANGER		
PROJECT # -	SHEET 2 OF 4	SCALE	SIZE	DRAWING NUMBER
		2:3	B	9630-20-021HM
				REVISION
				01

QC-21HM MASTER ASSEMBLY

9120-021HM-000-000-SX-6160



NOTES:
1. ASSEMBLE WITH FASTENERS AS LABELED

NOTES: UNLESS OTHERWISE SPECIFIED.

DO NOT SCALE DRAWING. ALL DIMENSIONS ARE IN MILLIMETERS.



3rd ANGLE PROJECTION



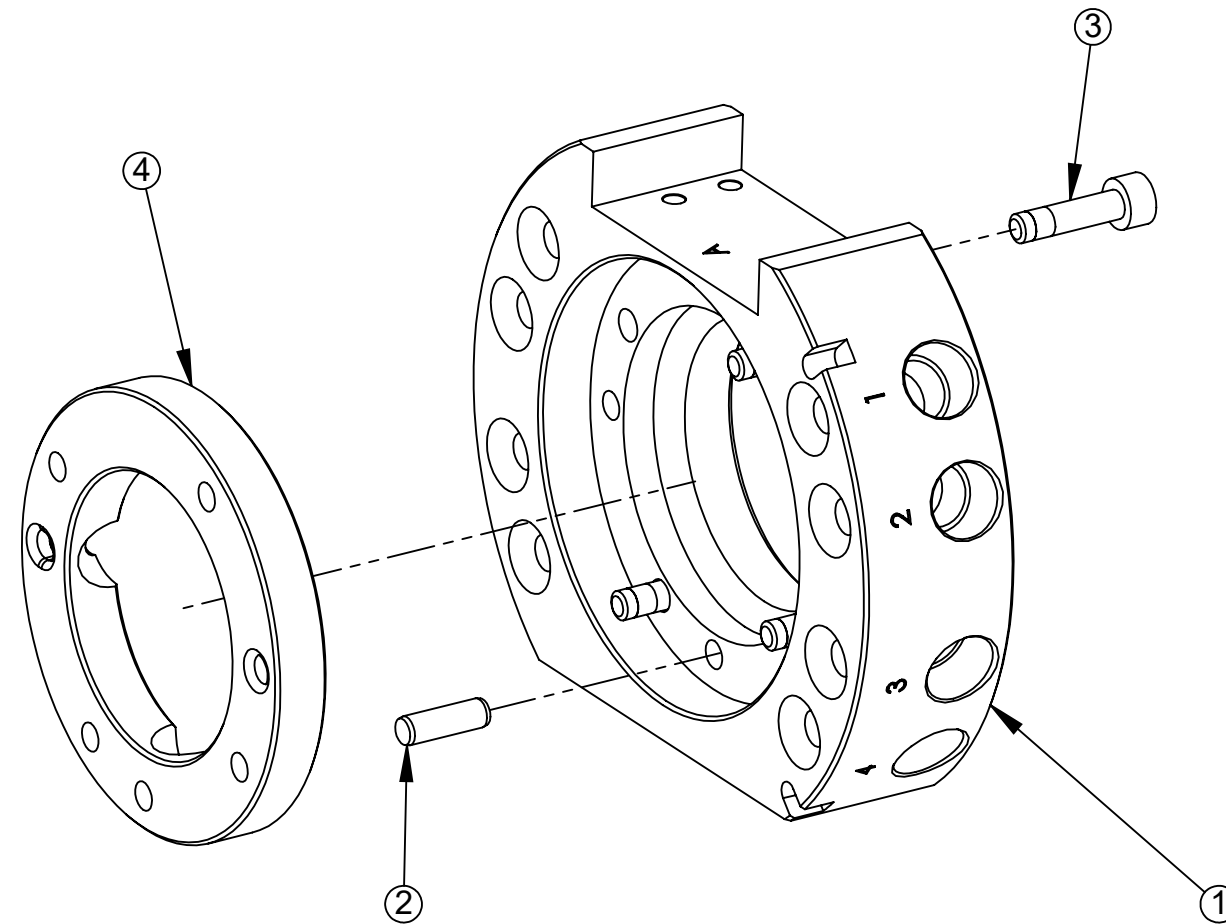
1031 Goodworth Drive, Apex, NC 27539, USA
Tel: +1.919.772.0115 www.ati-ia.com
Fax: +1.919.772.8259 ISO 9001 Registered Company

PROPERTY OF ATI INDUSTRIAL AUTOMATION, INC. NOT TO BE REPRODUCED IN ANY MANNER EXCEPT ON ORDER OR WITH PRIOR WRITTEN AUTHORIZATION OF ATI.

DRAWN BY: N. BADER, 7/30/2020		TITLE	
CHECKED BY: D. WAGNER, 8/4/2020		QC-21 HOLLOW WRIST TOOL CHANGER	
PROJECT # -	SHEET 3 OF 4	SCALE	SIZE
		2:3	B
		DRAWING NUMBER	REVISION
		9630-20-021HM	01

QC-21 TOOL ASSEMBLY

9120-021T-000-000



NOTES: UNLESS OTHERWISE SPECIFIED.

DO NOT SCALE DRAWING. ALL DIMENSIONS ARE IN MILLIMETERS.



3rd ANGLE PROJECTION



DRAWN BY: N. BADER, 7/30/2020

CHECKED BY: D. WAGNER, 8/4/2020

TITLE

QC-21 HOLLOW WRIST TOOL CHANGER

PROJECT # -

SHEET 4 OF 4

SCALE

1:1

SIZE

B

DRAWING NUMBER

9630-20-021HM

REVISION

01