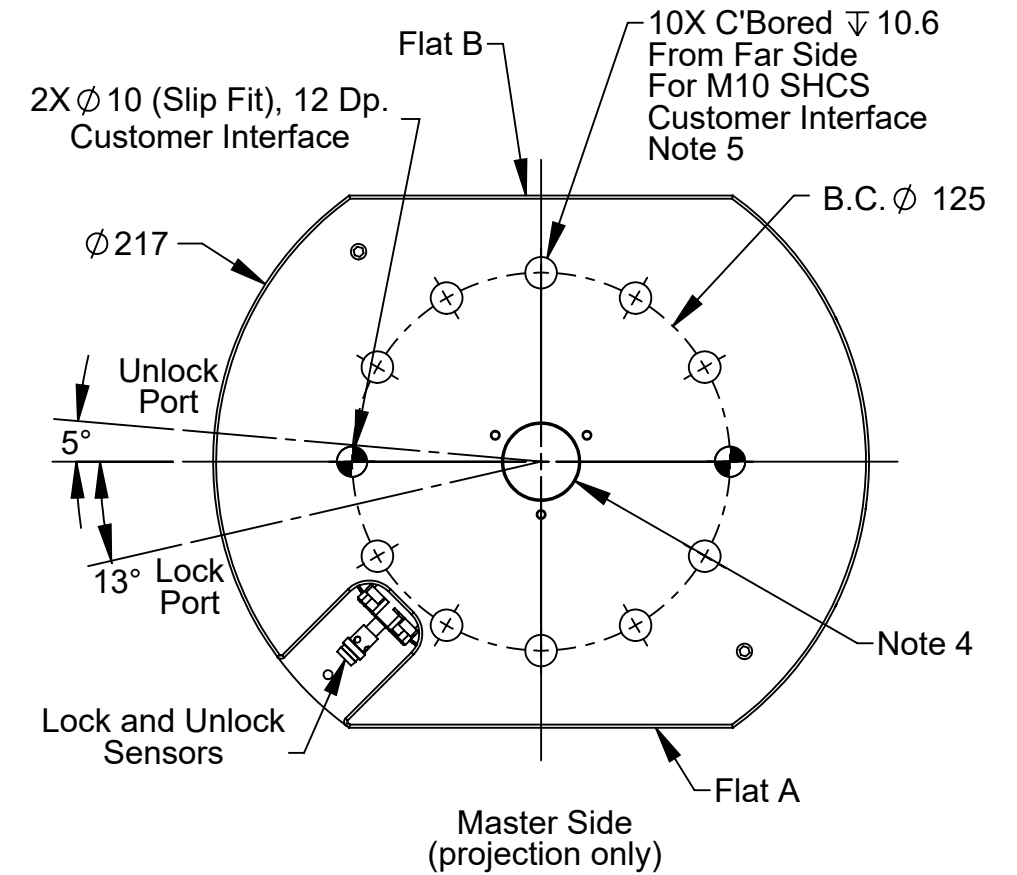
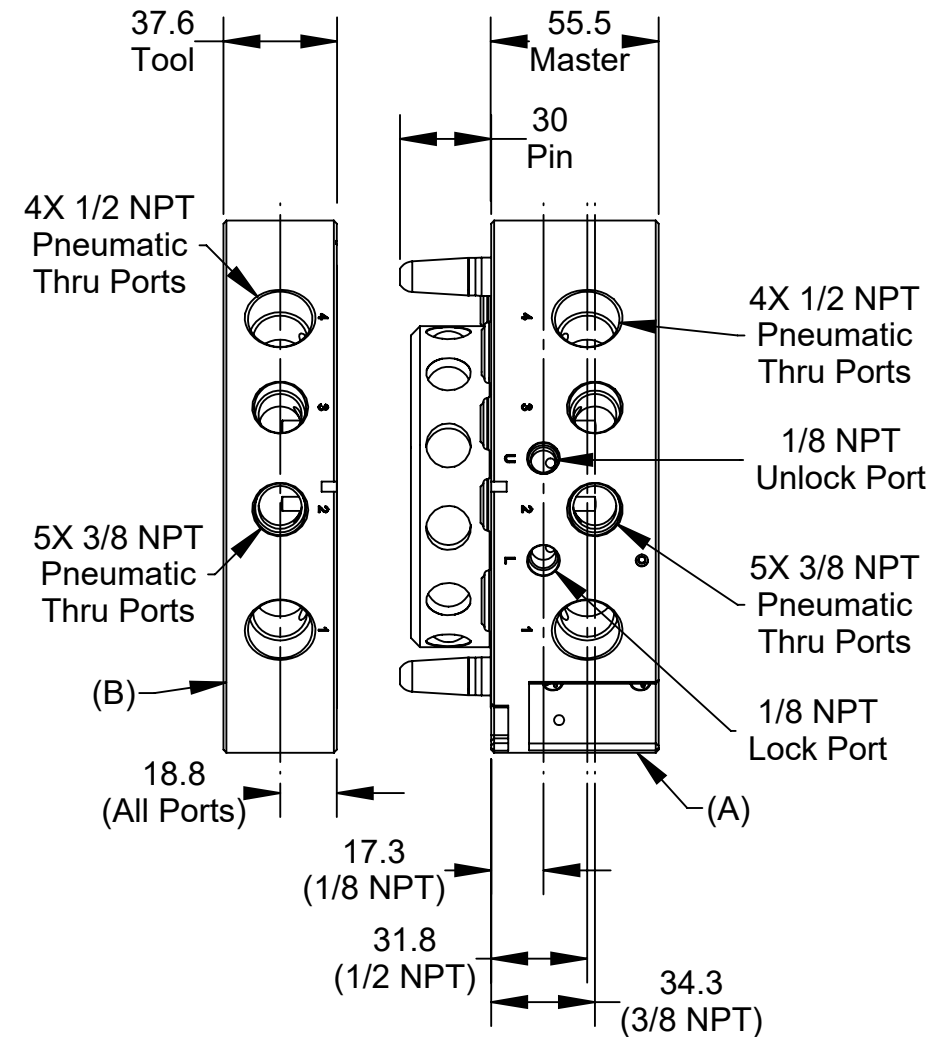
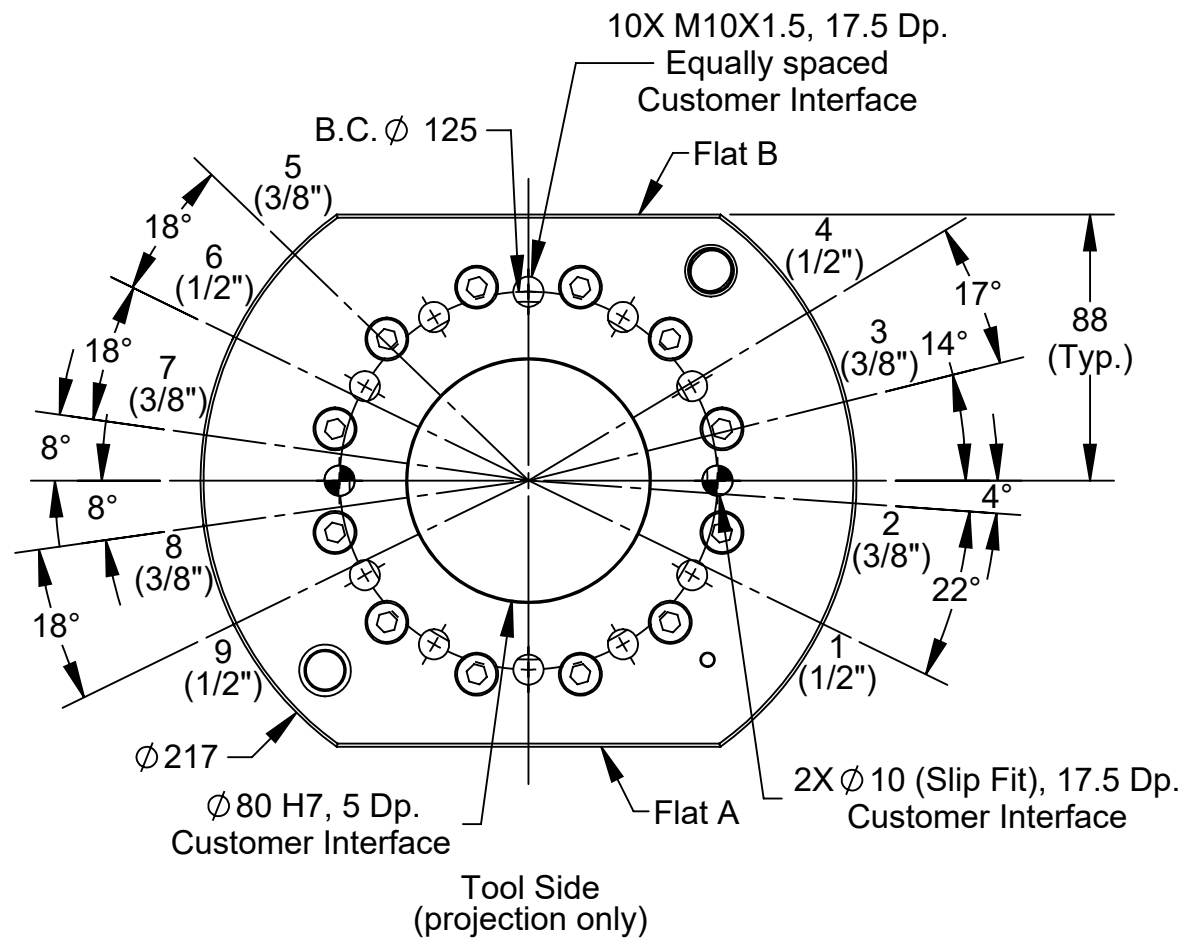
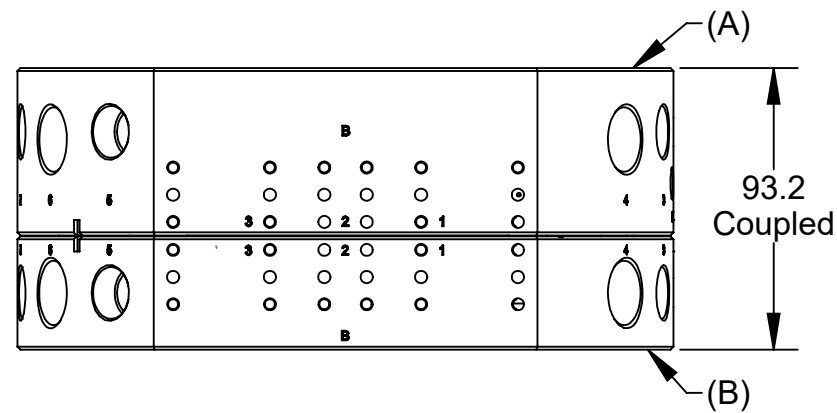


Rev.	Description	Initiator	Date
05	ECO 19232; Added Note 5.	LJH	6/27/2022

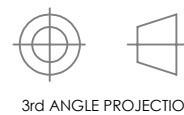


Part Numbers:
(A) Master: 9120-160AM-000-000-SM
(B) Tool: 9120-160FT-000-000

- Notes:
- Orientation marks are provided to assist in robot teaching.
 - SM on Master part number indicates PNP Lock/Unlock sensors. Lock/Unlock sensing is optional.
 - Ready to Lock sensor is available.
 - Plates available for several boss sizes.
 - QC max static moment rating $M_{xy}=2710Nm$, assuming all 10SHCS are used. QC Moment rating $M_{xy}=1355Nm$, if 6 fasteners are used on master.

NOTES: UNLESS OTHERWISE SPECIFIED.

DO NOT SCALE DRAWING. ALL DIMENSIONS ARE IN MILLIMETERS.



DRAWN BY: M. Gala, 4/2/2014

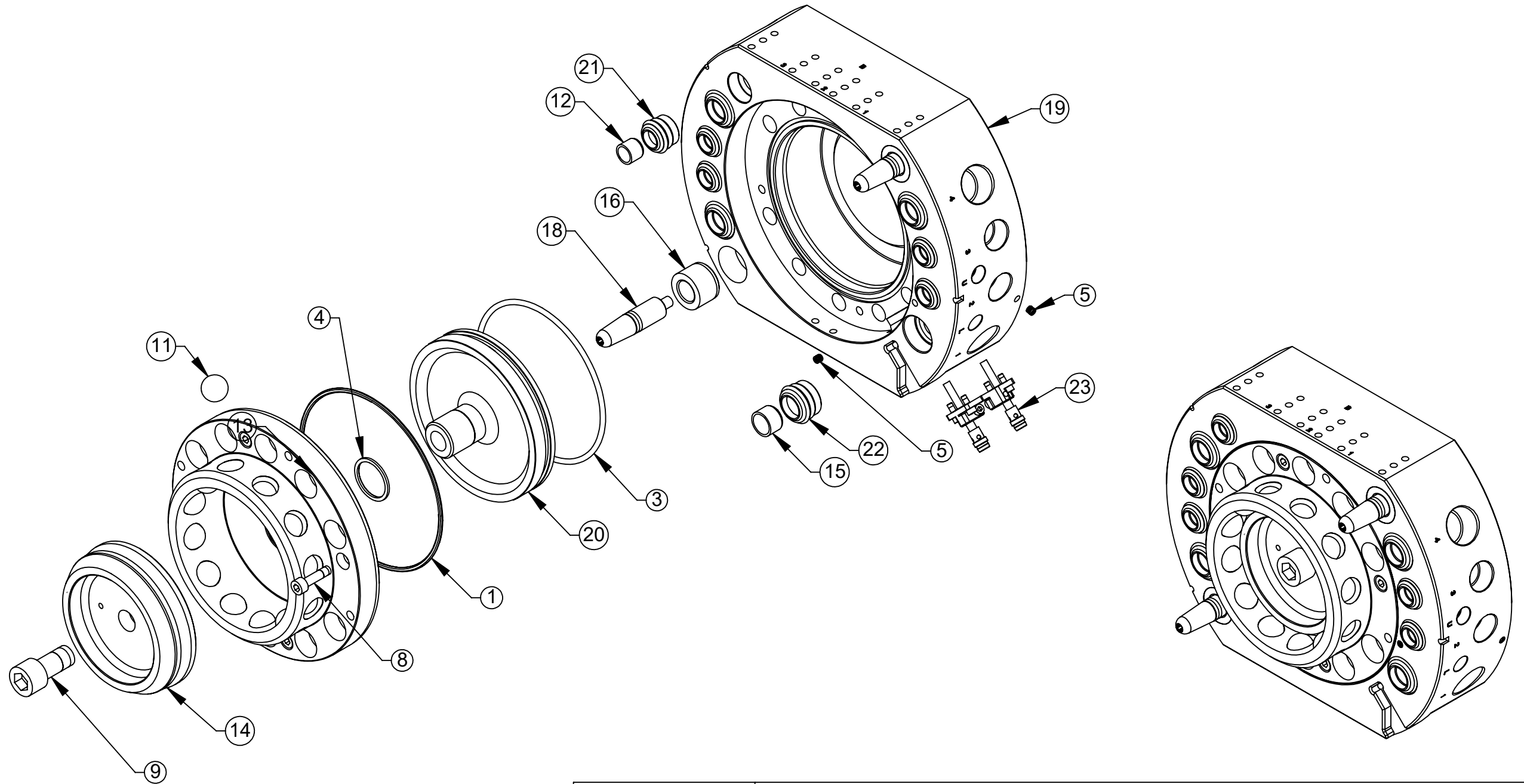
CHECKED BY: D. Norton, 4/4/2014

PROJECT # 131125-1 SHEET 1 OF 3

TITLE
QC-160 Tool Changer Drawing

SCALE	SIZE	DRAWING NUMBER	REVISION
2:5	B	9630-20-160	05

QC-160 Master Assembly



NOTES: UNLESS OTHERWISE SPECIFIED.

DO NOT SCALE DRAWING. ALL DIMENSIONS ARE IN MILLIMETERS.



3rd ANGLE PROJECTION

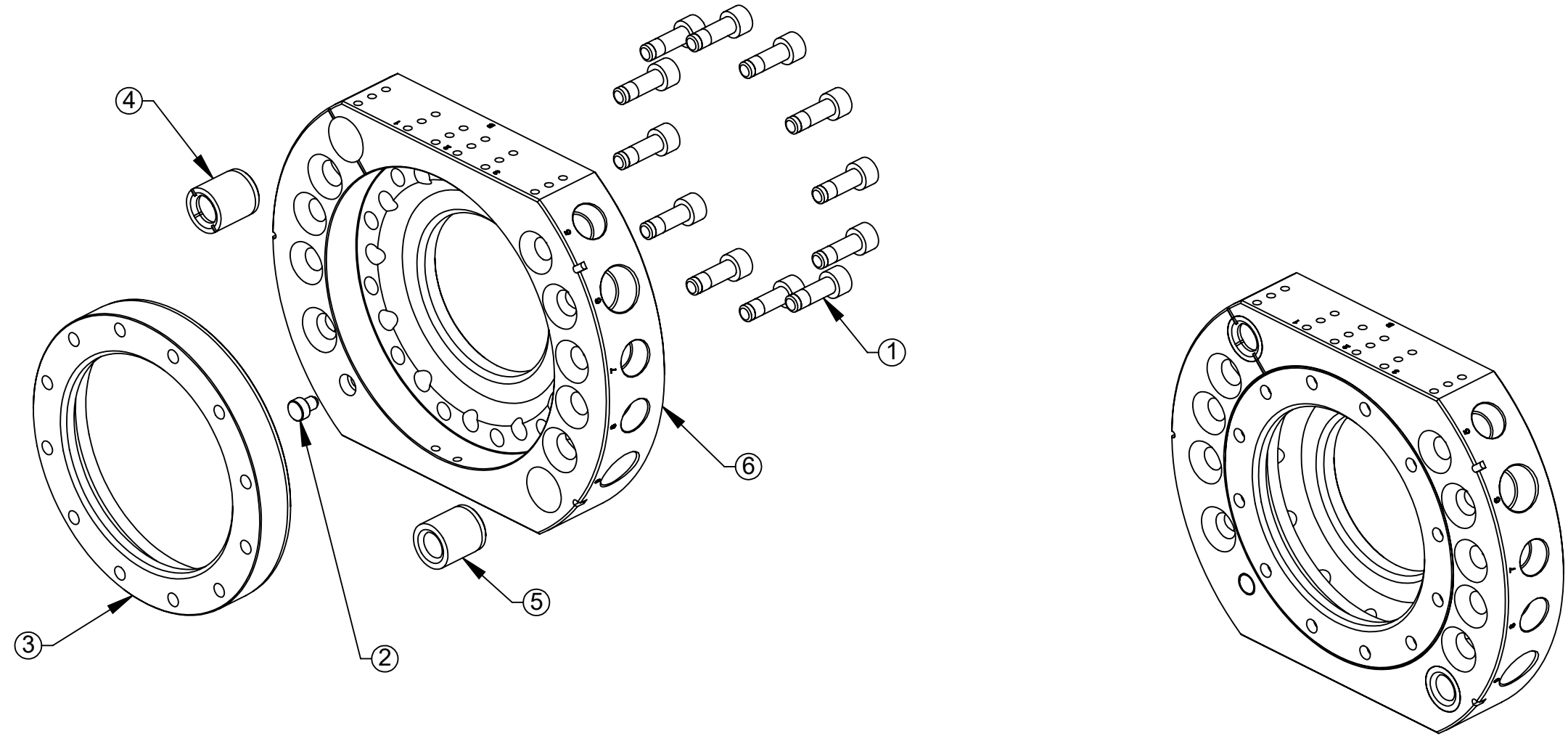


1031 Goodworth Drive, Apex, NC 27539, USA
 Tel: +1.919.772.0115 www.ati-ia.com
 Fax: +1.919.772.8259 ISO 9001 Registered Company

PROPERTY OF ATI INDUSTRIAL AUTOMATION, INC. NOT TO BE REPRODUCED IN ANY MANNER EXCEPT ON ORDER OR WITH PRIOR WRITTEN AUTHORIZATION OF ATI.

DRAWN BY: M. Gala, 4/2/2014		TITLE		
CHECKED BY: D. Norton, 4/4/2014		QC-160 Tool Changer Drawing		
PROJECT # 131125-1	SHEET 2 OF 3	SCALE	SIZE	DRAWING NUMBER
		2:5	B	9630-20-160
				REVISION
				05

QC-160 Tool Assembly



NOTES: UNLESS OTHERWISE SPECIFIED.

DO NOT SCALE DRAWING. ALL DIMENSIONS ARE IN MILLIMETERS.



3rd ANGLE PROJECTION



DRAWN BY: M. Gala, 4/2/2014

CHECKED BY: D. Norton, 4/4/2014

PROJECT # 131125-1 SHEET 3 OF 3

TITLE
QC-160 Tool Changer Drawing

SCALE	SIZE	DRAWING NUMBER	REVISION
2:5	B	9630-20-160	05