

Enclosed Pneumatic Power Clamps | Heavy-Duty Modular | Ordering Information

82M-3 **E** **23** **H0** **50** **L8** - **1** ● North America Only

Mounting	Description
E	Standard Mounting
B	Common Front Mount for Size 40 only (same mount pattern as size 50 & 63)
N	NAAMS Side Mounting for Size 63 only

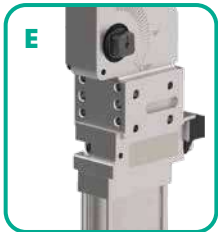
Clamp Arm Shaft	Description
03	for U-Arms
23	for Lateral Arms
D0	for Lateral Arms (size 63 NAAMS only)

Handle	Description
00	No Hand lever
H0	Hand Lever
HS	Weldable

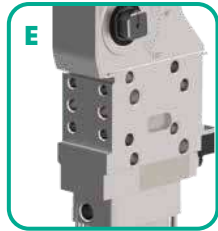
See below for further details

See below for further details

Mounting



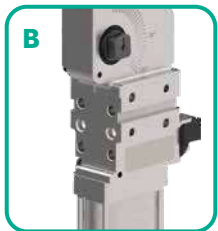
Size 40



Size 50



Size 63/80



Size 40 Only

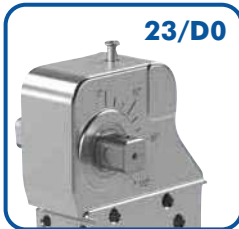


Size 63 Only

Clamp Arm Shaft



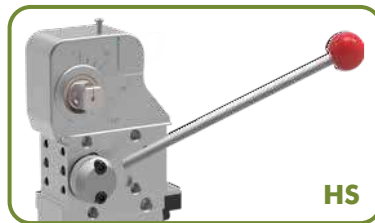
Size	Shaft Length (L17)
40	9 mm [0.35 in]
50	12 mm [0.47 in]
63	12 mm [0.47 in]



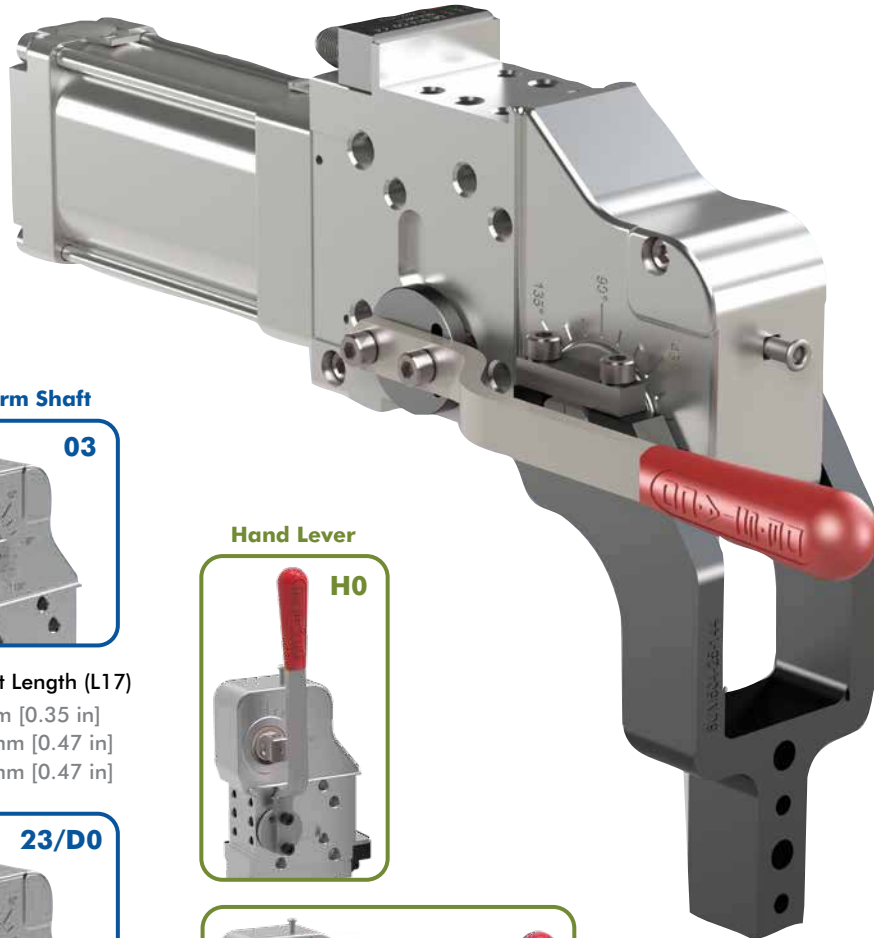
Size	Shaft Length (L17)
40	16 mm [0.63 in]
50	21 mm [0.83 in]
63	21 mm [0.83 in]
80	32 mm [1.26 in]

Size	Shaft Length (L17)
63	26 mm [1.02 in]

Hand Lever



Hand Lever	Description
00	No Hand Lever
H0	Standard Hand Lever (not compatible with cylinder options *A, *B)
HS	Weldable Hand Lever (not compatible with cylinder options *A, *B)



Shown with U-Arm
8UM504-25-144
(order separately)

Enclosed Pneumatic Power Clamps | Heavy-Duty Modular | Ordering Information

Sensor	Description
00	Without Sensing System
L8	PNP Sensor with In-line M12x1 Connector (8EA-146-4)
N8	NPN Sensor with In-line M12x1 Connector (8EA-154-4)
L9	PNP Sensor with 90° M12x1 Connector (8EA-147-4)
N9	NPN Sensor with 90° M12x1 Connector (8EA-155-4)
K8	PNP Sensor with M12x1 Cable Connector (8EA-158-4)
K9	NPN Sensor with M12x1 Cable Connector (8EA-167-4)



Cylinder - Standard

- 40** 40 mm Cylinder (G1/8 Port)
- 50** 50 mm Cylinder (G1/4 Port)
- 5N** 50 mm Cylinder (1/4-18 NPT Port)
- 63** 63 mm Cylinder (G1/4 Port)
- 6N** 63 mm Cylinder (1/4-18 NPT Port)
- 80** 80 mm Cylinder (G1/4 Port)
- 8N** 80 mm Cylinder (1/4-18 NPT Port)



Cylinder with Internal Hold Open Device

- 4A** 40 mm Cylinder (G1/8 Port)
- 5A** 50 mm Cylinder (G1/4 Port)
- 5B** 50 mm Cylinder (1/4-18 NPT Port)
- 6A** 63 mm Cylinder (G1/4 Port)
- 6B** 63 mm Cylinder (1/4-18 NPT Port)
- 8A** 80 mm Cylinder (G1/4 Port)
- 8B** 80 mm Cylinder (1/4-18 NPT Port)



40

Max Holding Torque
380 Nm [280 ft-lb]
Max Clamping Torque
120 Nm [89 ft-lb]
at 5 bar [72 psi]

50

Max Holding Torque
1300 Nm [959 ft-lb]
Max Clamping Torque
270 Nm [199 ft-lb]
at 5 bar [72 psi]

63

Max Holding Torque
1800 Nm [1328 ft-lb]
Max Clamping Torque
420 Nm [310 ft-lb]
at 5 bar [72 psi]

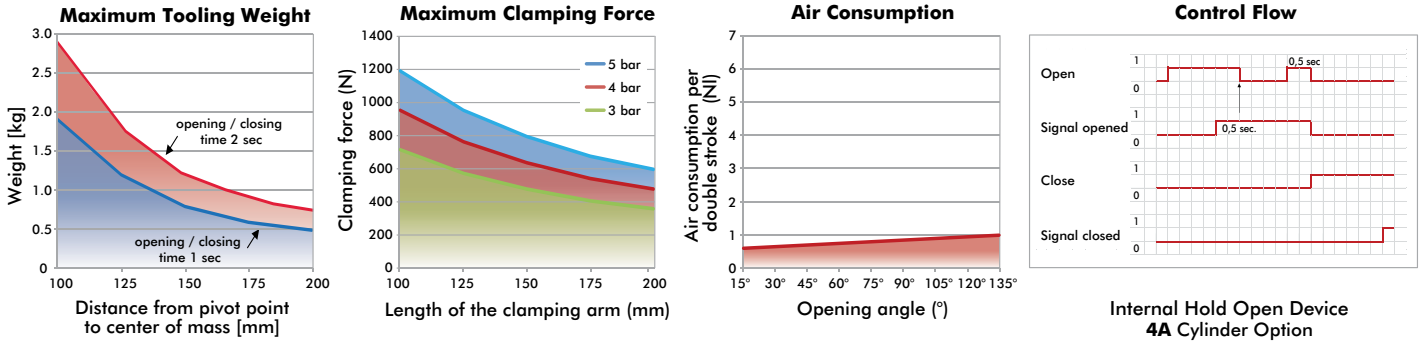
80

Max Holding Torque
3000 Nm [2213 ft-lb]
Max Clamping Torque
850 Nm [627 ft-lb]
at 5 bar [72 psi]

82M-3

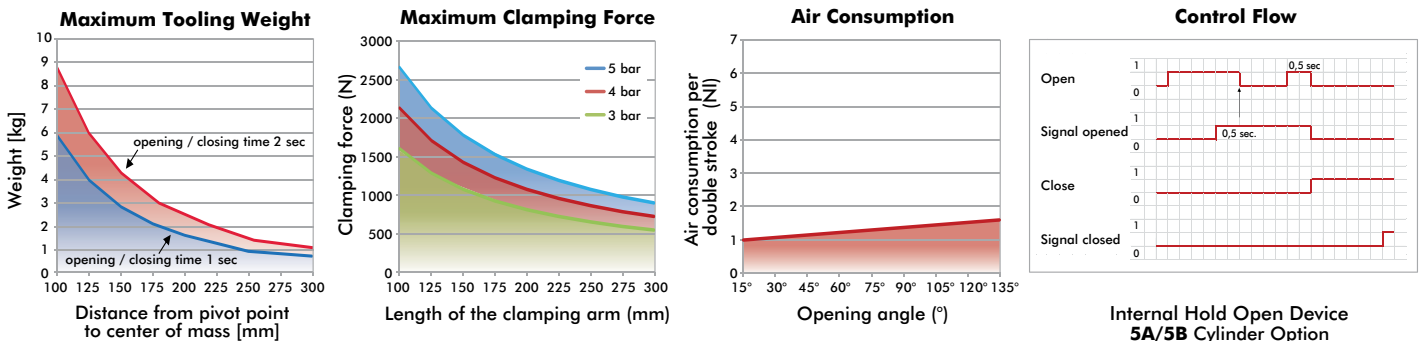
Enclosed Pneumatic Power Clamps | Heavy-Duty Modular | Technical Specifications

Model	Max. Holding Torque (Nm)	Clamping Torque at 5 bar (Nm)	Cylinder Ø (mm)	Weight (kg)	Air Consumption per double stroke at 5 bar (liter)
82M-3E...4...	380	120	40	1,5	0,9
82M-3B...4...					



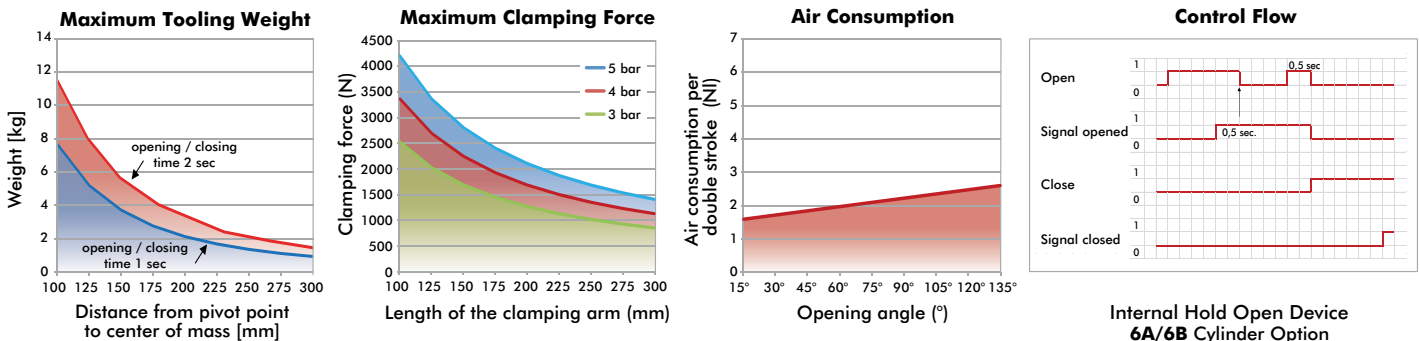
ATTENTION: Calculation tool available. Please consult factory.

Model	Max. Holding Torque (Nm)	Clamping Torque at 5 bar (Nm)	Cylinder Ø (mm)	Weight (kg)	Air Consumption per double stroke at 5 bar (liter)
82M-3E...5...	1300	270	50	2,8	1,6



ATTENTION: Calculation tool available. Please consult factory.

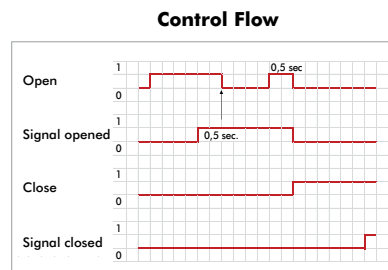
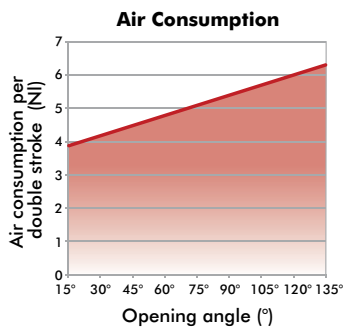
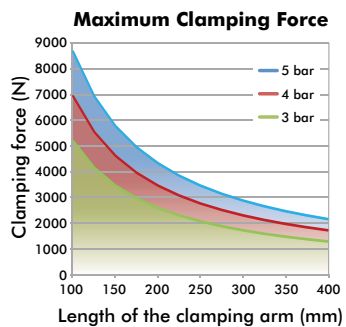
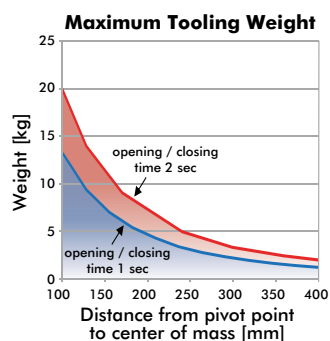
Model	Max. Holding Torque (Nm)	Clamping Torque at 5 bar (Nm)	Cylinder Ø (mm)	Weight (kg)	Air Consumption per double stroke at 5 bar (liter)
82M-3E...6...	1800	420	63	3,8	2,6
82M-3N...6...					



ATTENTION: Calculation tool available. Please consult factory.

Enclosed Pneumatic Power Clamps | Heavy-Duty Modular | Technical Specifications

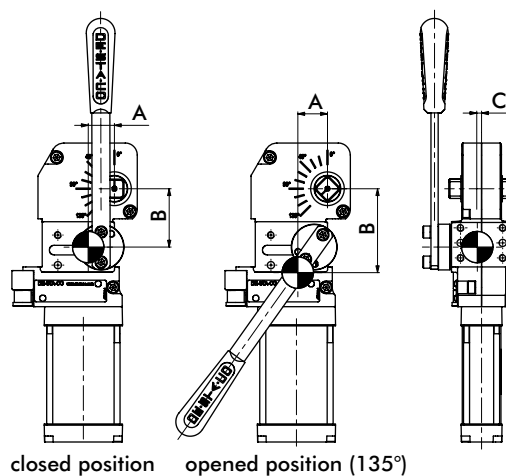
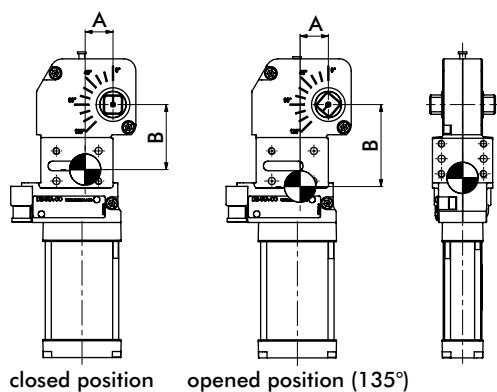
Model	Max. Holding Torque (Nm)	Clamping Torque at 5 bar (Nm)	Cylinder Ø (mm)	Weight (kg)	Air Consumption per double stroke at 5 bar (liter)
82M-3E...80..	3000	850	80	8,7	6,3
82M-3E...8N..				8,8	
82M-3E...8A..					
82M-3E...8B..					



Internal Hold Open Device
8A/8B Cylinder Option

ATTENTION: Calculation tool available. Please consult factory.

Center of Mass



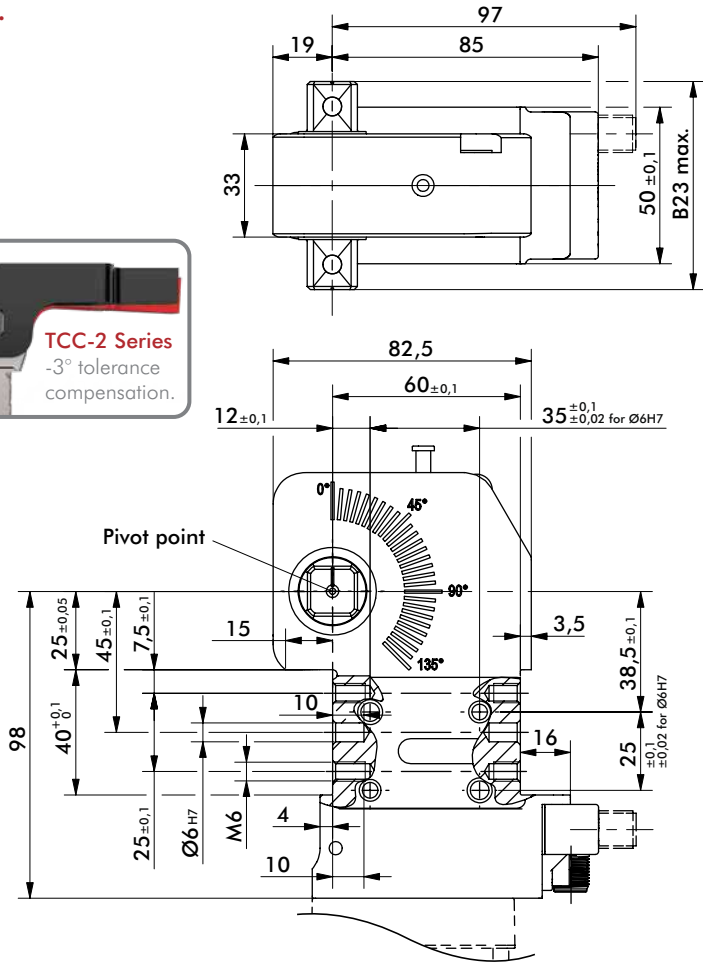
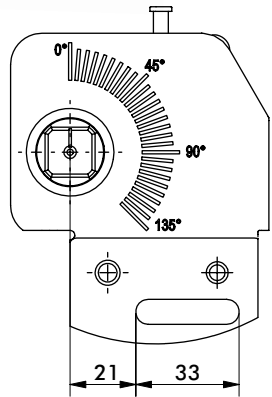
Model	Without Handle				Weight
	A		B		
	Closed	Open	Closed	Open	
82M-3E...40..	23	24	55	69	1,5
82M-3B...40..	24	24	54	68	
82M-3E...4A..	22	23	72	86	1,6
82M-3B...4A..	23		85		
82M-3E...50..	24	25	70	87	2,8
82M-3E...5N..			83	99	
82M-3E...5A..			83	99	
82M-3E...5B..			83	99	
82M-3...63..	27	28	88	103	3,8
82M-3...6N..			98	114	
82M-3...6A..			98	114	
82M-3...6B..			98	114	
82M-3E...80..	36	37	98	123	8,7
82M-3E...8N..			98	123	
82M-3E...8A..			104	129	
82M-3E...8B..			104	129	

Model	With Handle				C	Weight
	A		B			
	Closed	Open	Closed	Open		
82M-3E...40..	22	25	49	70	4	1,6
82M-3B...40..	24	27	46	67		
82M-3E...50..	23	30	62	85	3	3,1
82M-3E...5N..			62	85		
82M-3...63..	26	30	80	102	3	4,2
82M-3...6N..			80	102		
82M-3E...80..	35	38	93	122	2	9,2
82M-3E...8N..			93	122		

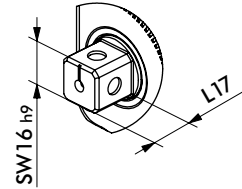
82M-3/TCC-2, 40MM

Enclosed Pneumatic Power Clamps | Heavy-Duty Modular | Dimensions

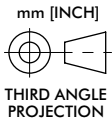
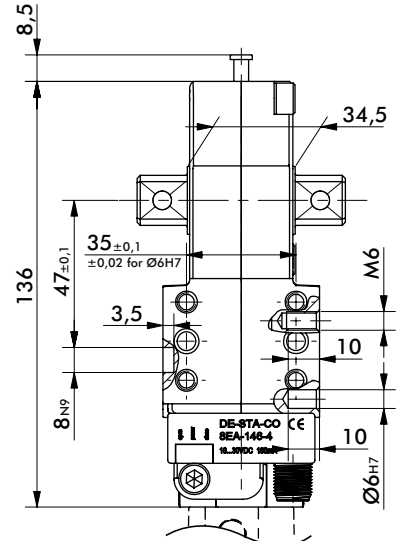
82M-3E/TCC-2E....4.



Dimensions of the driven shaft



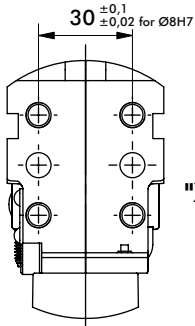
Model	B23 Max.	L17
82M-3.03/TCC-2.03..4...	54,5	9
82M-3.23/TCC-2.23..4...	66,5	16



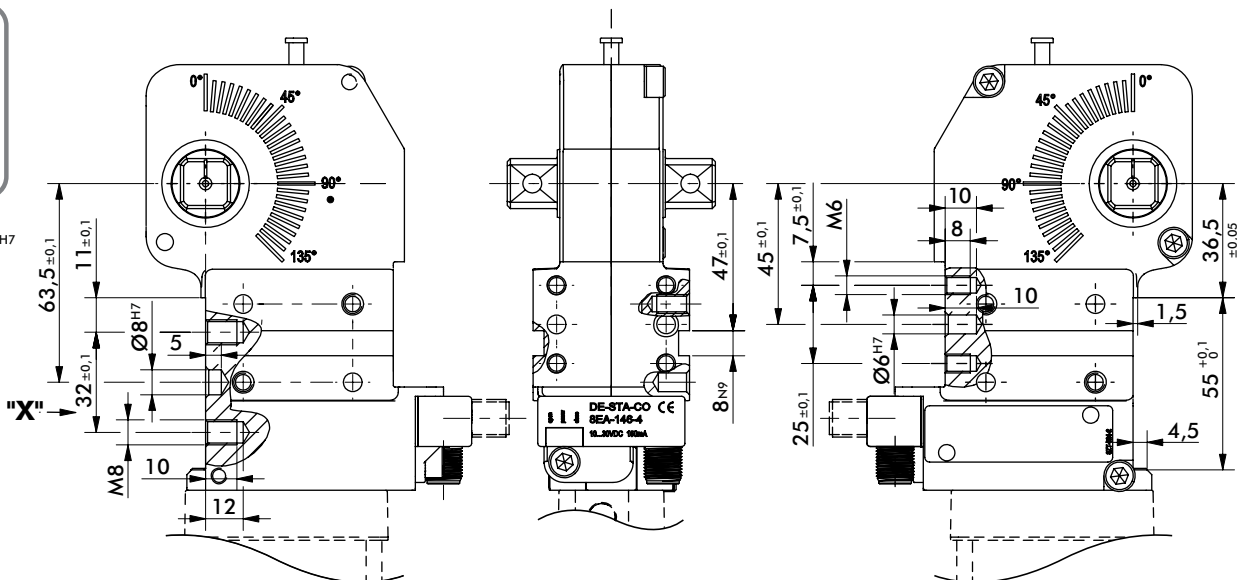
Power by compressed air, max. 6 bar operation with oil-free air is permissible. The connector socket and the cable are not supplied with the unit. Safe "holding/clamping" only under pressurization (for TCC models only).

82M-3B/TCC-2B....4.

Dimensions below for "B" mounting surfaces. See above for additional base unit dimensions.

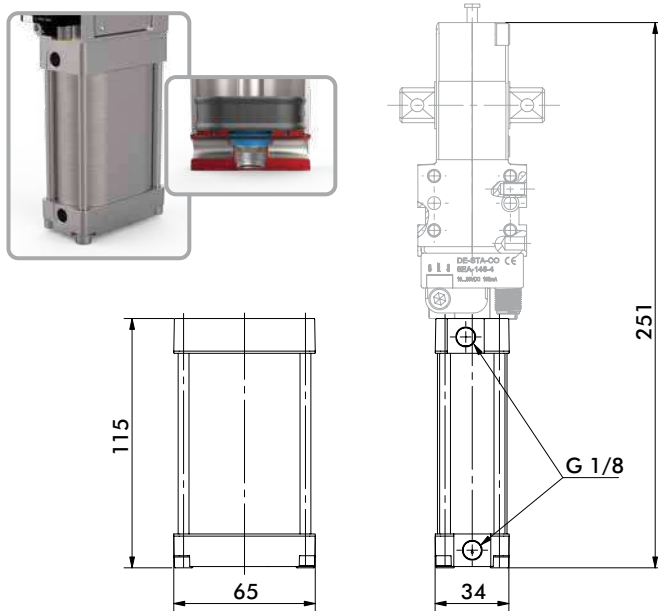


View "X"



82M-3/TCC-2.....40

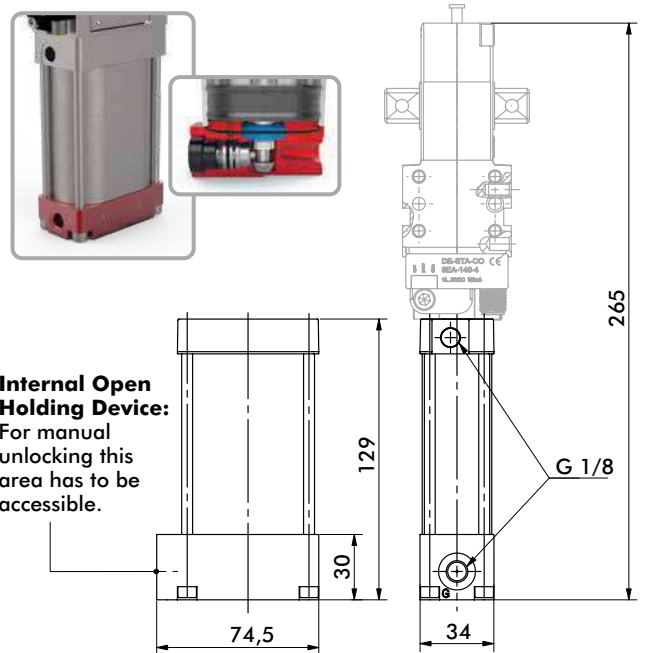
Standard Cylinder



82M-3/TCC-2.....4A

Cylinder with Internal Hold Open Device

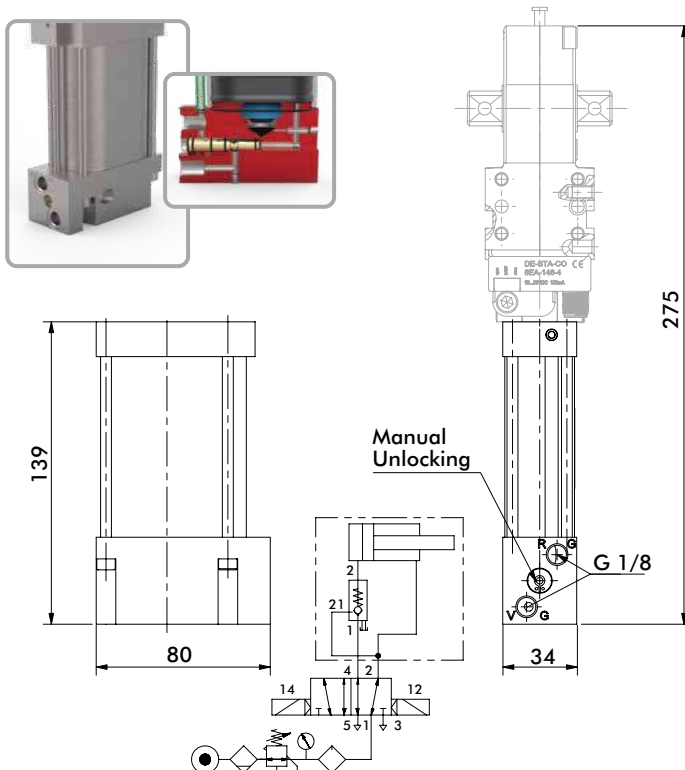
Securely holds clamp in the open position.



TCC-2.....4C

Cylinder with Unlock-able Return Valve

Pneumatically holds clamp arm in the closed position when air is released.



TCC-2.....4V

Cylinder with Rod Locking Device

Uses friction to clamp rod at any point between open and closed positions.

