

82D40-2/82D63-5



Enclosed Pneumatic Power Clamps | Dual Arm | Features and Benefits | Technical Information

82D63-5 **23** **C9** **0** **0** **B**

Clamp Arms Description
B Base model only. Order clamps arms separately. See below.

Base Model	Description
82D40-2	40 mm Cylinder (G1/4 Port)
82D63-5	63 mm Cylinder (G1/4 Port)

Clamp Arm Shaft Description
23 includes long drive shaft ends on both sides fit for all clamping arms (standard)

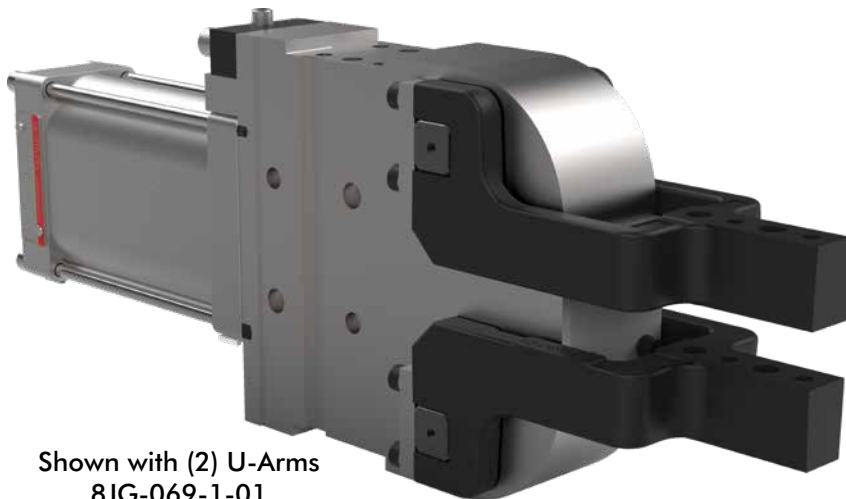
Hand Lever Description
0 Hand Lever not available

Sensor Description
C9 includes Sensing System with M12x1 Connector (8EA-024-2) Standard

Opening Angle Description
Opening Angle

0	180° (standard)
1	160°
2	140°
3	120°
4	100°
5	80°
6	60°
7	40°
8	20°

Reduced opening angles available upon request.



Shown with (2) U-Arms
8JG-069-1-01
(order separately)



82D63-5

Max Holding
400 Nm [295 ft-lb]
Max Clamping Torque
120 Nm [88 ft-lb]
at 5 bar [72 psi]



82D40-2

Max Holding
140 Nm [103 ft-lb]
Max Clamping Torque
60 Nm [44 ft-lb]
at 5 bar [72 psi]

U-type Central Clamping Arm



Model	Order No. (1 clamp arm)
82D40-223C900B	8JG-065-2-01
82D63-523C900B	8JG-069-1-01

Alternate Clamp Arm mounting positions



Lateral Clamping Arm

Clamp Arm Variants
Left Side, Right Side, Both Sides

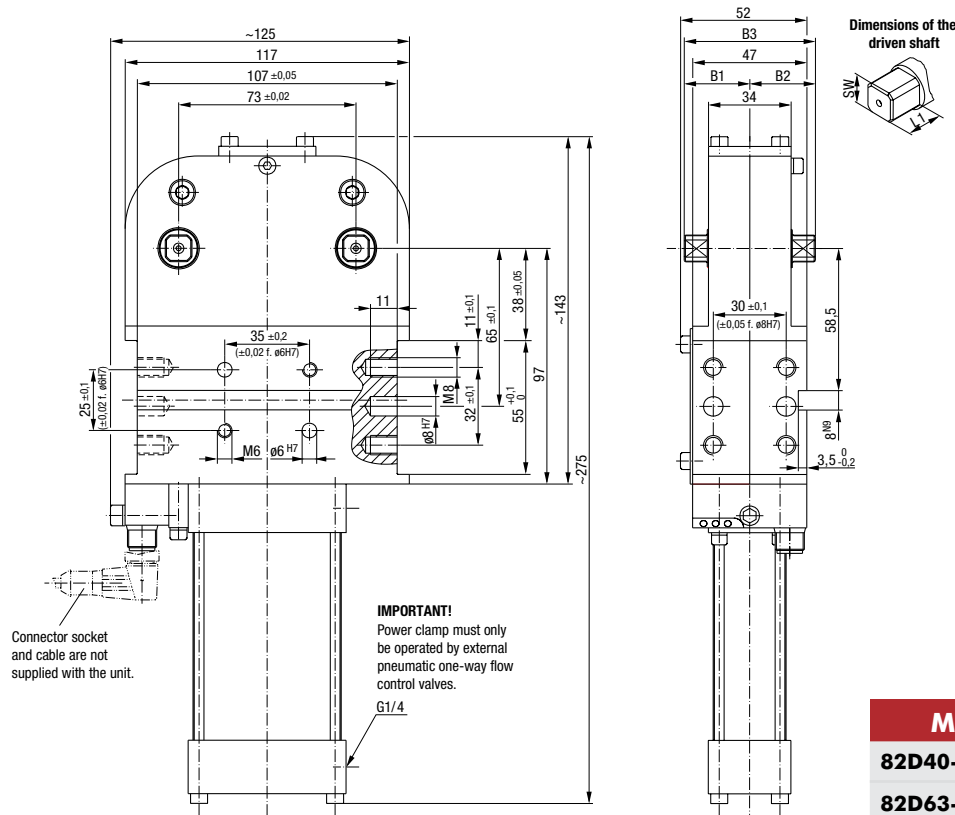


Model	Order No. (1 clamp arm)
82D40-223C900B	8JG-066-1-01
82D63-523C900B	8JG-070-1-01

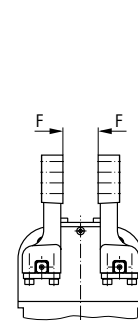
82D40-2/82D63-5

Enclosed Pneumatic Power Clamps | Dual Arm | Dimensions

Model	Clamping position	Standard opening angle	Driveshaft	Max. holding torque Nm [lb ft]	Clamping torque at 5 bar Nm [lb ft]	Cylinder Ø mm [in]	Air consumption per double stroke at 5 bar dm ³ [ft ³]	Weight ~ kg [lbs]
82D40-223C900B	vertical	180°	lateral, both sides U-type clamping arms	55 [40]	55 [40]	40 [1.57]	1,2 [0.04]	2,5 [5.50]
82D63-523C900B				120 [88]	120 [88]	63 [2.48]	3,8 [0.13]	4,5 [9.90]



82D40-223C900B

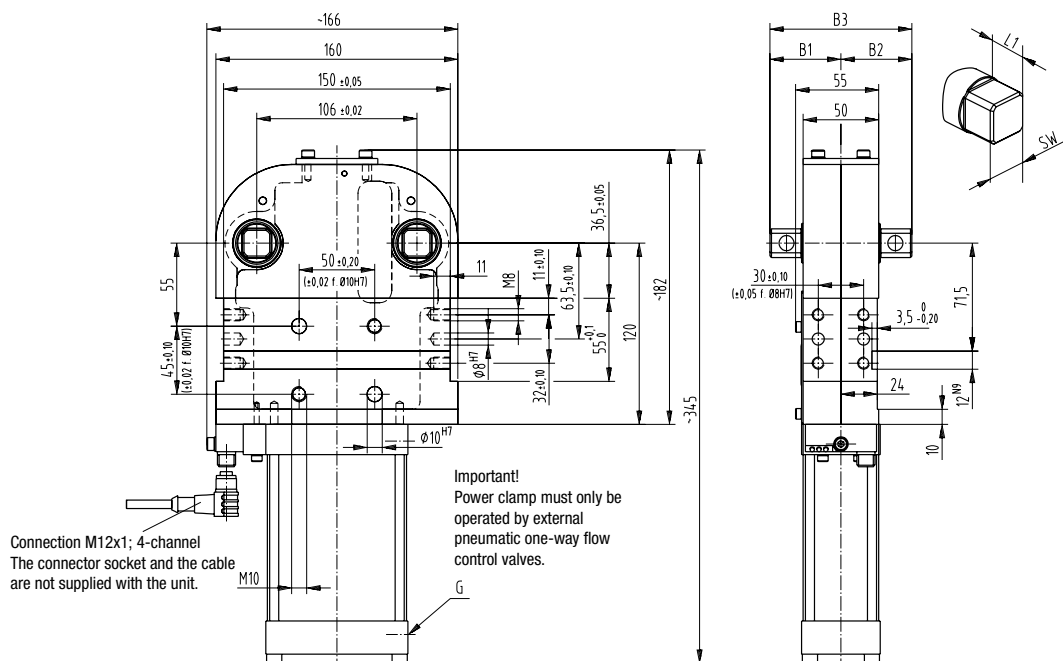


Safety notice:

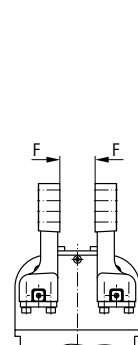
The load on the clamping arms must always point towards the clamping direction. Single load of one arm is prohibited

Medium: air, max. 6 bar, operation with oil-free air is permissible

Model	B1	B2	B3	L1	SW	G
82D40-223C900B	30	30	60	12,5	11	1/4
82D63-523C900B	47	47	94	21	19	



82D63-523C900B



Safety notice:

The load on the clamping arms must always point towards the clamping direction. Single load of one arm is prohibited

Medium: air, max. 6 bar, operation with oil-free air is permissible

Dimensions and technical information are subject to change without notice

U-ARMS CENTER (STEEL)

Enclosed Pneumatic Power Clamps | Dual Arm | Dimensions and Technical Specifications

- Clamping arm variants for **82D40-2**

Clamping arm variant U-type central clamping arm

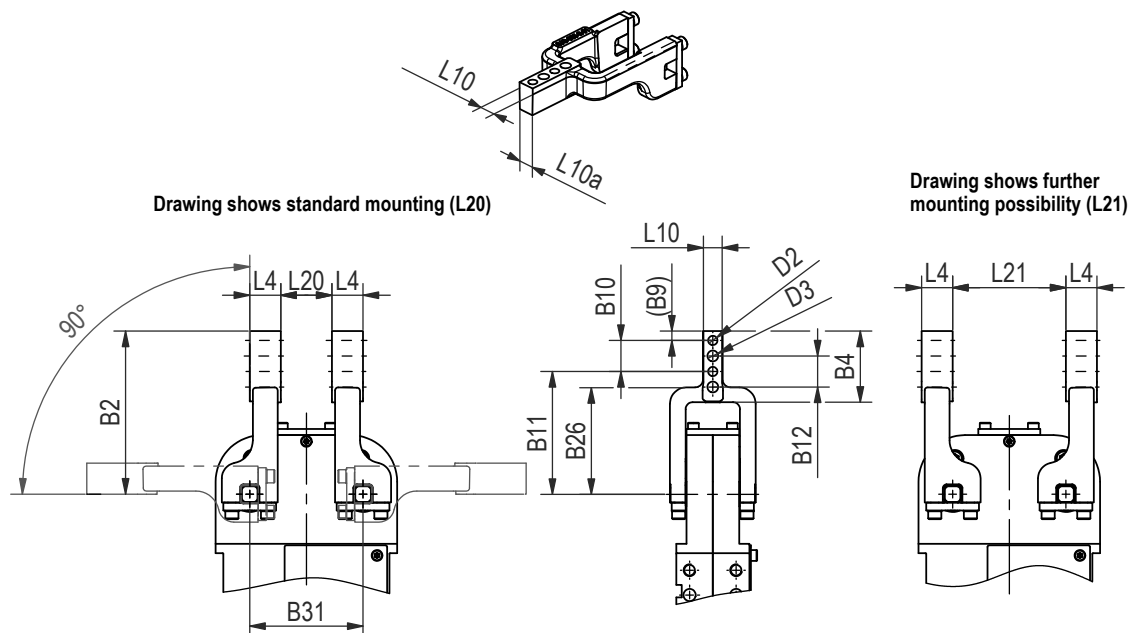


Base model with 2 U-type clamping arms, small gap between clamping arms

U-type central clamping arm | Technical Information

Model	Order no. for U-type clamping arm set (1 clamping arm)	Clamping position	Standard opening angle	B2	B4	B9	B10	B11	B12	B26			
82D40-223C900B	8JG-065-2-01	vertical	180°	105	45,3	6	±0,02	+0,1	±0,2	20	79	20	68,2

Model	Order no. for U-type clamping arm set (1 clamping arm)	B31	D2	D3	L4	L10	L10a	L20	L21
82D40-223C900B	8JG-065-2-01	±0,02	H7 ø	ø		±1,1	~		
82D40-223C900B	8JG-065-2-01	73	6	7	20	12	11,3	33	73



Dimensions and technical information are subject to change without notice

U-ARMS CENTER (STEEL)

Enclosed Pneumatic Power Clamps | Dual Arm | Dimensions and Technical Specifications

- Clamping arm variants for **82D63-5**

Clamping arm variant U-type central clamping arm

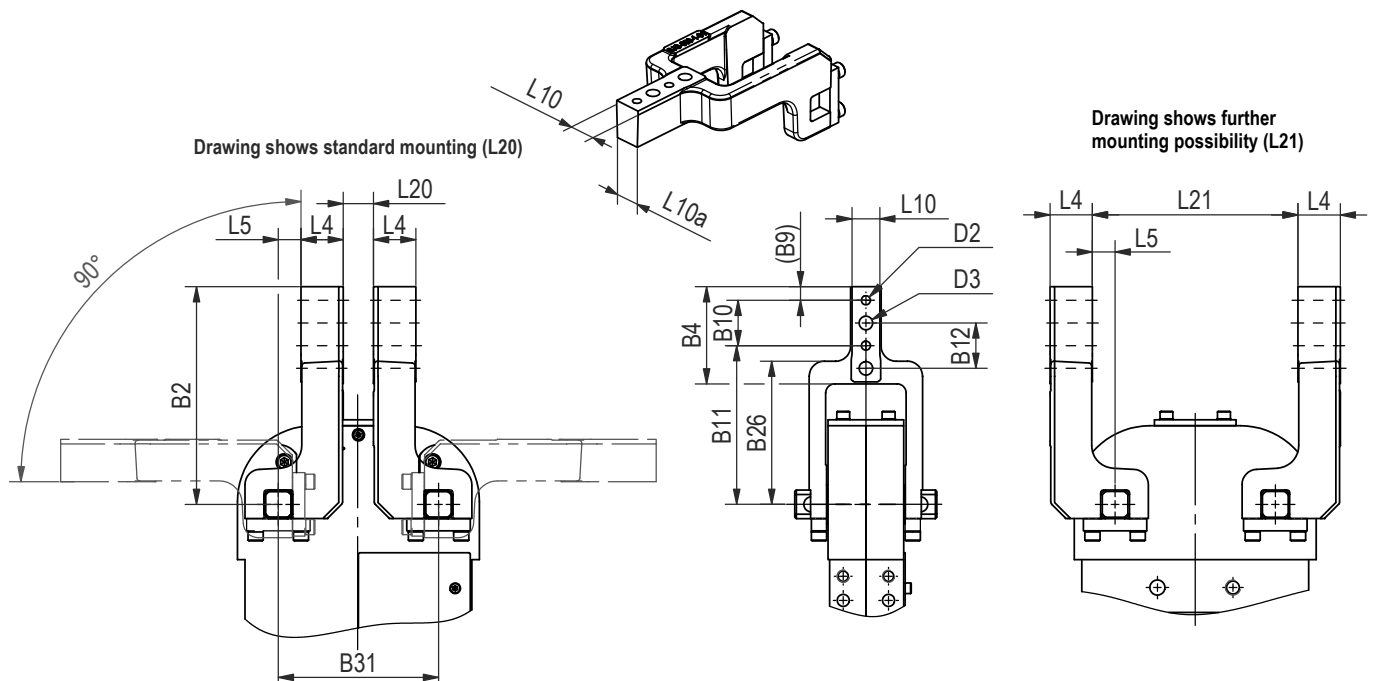


Base model with 2 U-type clamping arms, small gap between clamping arms

U-type central clamping arms | Technical Information

Model	Order no. for U-type clamping arm set (1 clamping arm)	Clamping position	Standard opening angle	B2	B4	B9	B10	B11	B12	B26
82D63-523C900B	8JG-069-1-01	vertical	180°	144	64,3	9	±0,02	+0,1	±0,2	95

Model	Order no. for U-type clamping arm set (1 clamping arm)	B31	D2	D3	L4	L5	L10	L10a	L20	L21
82D63-523C900B	8JG-069-1-01	±0,02	H7 ∅	∅	28	15	±1,2	~	20	136



Dimensions and technical information are subject to change without notice

LATERAL (SIDE) ARMS

Enclosed Pneumatic Power Clamps | Dual Arm | Dimensions and Technical Specifications

- Clamping arm variants for **82D40-2**

Clamping arm variant

- Lateral clamping arm left
- Lateral clamping arm right
- Lateral clamping arm both sides



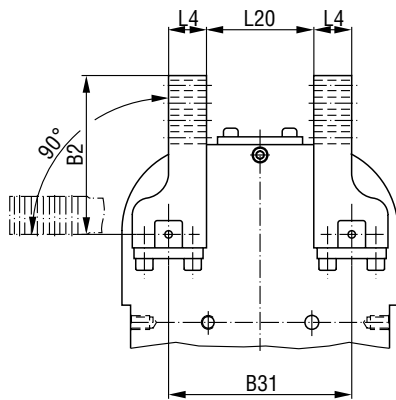
Base model with 4 lateral clamping arms, large gap between clamping arms

Lateral clamping arm | Technical Information

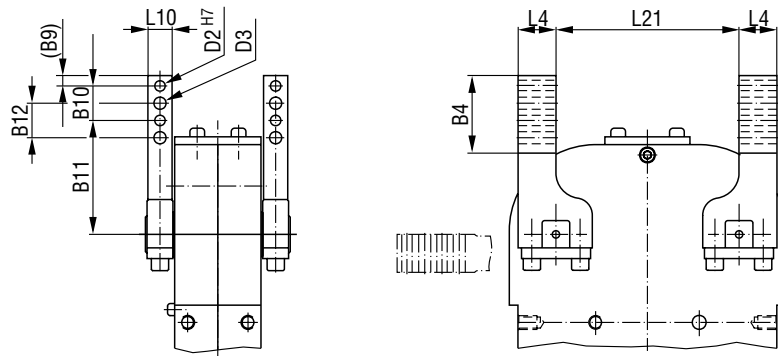
Model	Clamping arm variant	Order no. for 1 set of lateral clamping arms (1 clamping arm)	Clamping position	Standard opening angle	B2	B4	B9	B10	B11	B12
82D40-223C900B	lateral, left lateral, right lateral, both sides	8JG-066-1-01	vertical	180°	105	45	6	±0,02	+0,1	±0,2

Model	Clamping arm variant	Order no. for 1 set of lateral clamping arms (1 clamping arm)	B31	D2	D3	L4	L10	L20	L21
82D40-223C900B	lateral, left lateral, right lateral, both sides	8JG-066-1-01	±0,02	H7 ∅	∅		-0,1		
82D40-223C900B	lateral, left lateral, right lateral, both sides	8JG-066-1-01	73	6	7	20	12	33	73

Drawing shows standard mounting (L20) with four lateral clamp arms



Drawing shows further mounting possibility (L21)



LATERAL (SIDE) ARMS

Enclosed Pneumatic Power Clamps | Dual Arm | Dimensions and Technical Specifications

- Clamping arm variants for **82D63-5**

Clamping arm variant

- Lateral clamping arm left
- Lateral clamping arm right
- Lateral clamping arm both sides



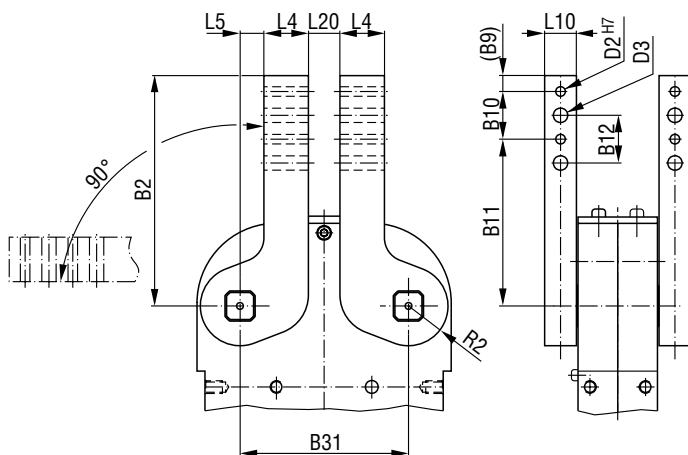
Base model with 4 lateral clamping arms, large gap between clamping arms

Lateral clamping arms | Technical Information

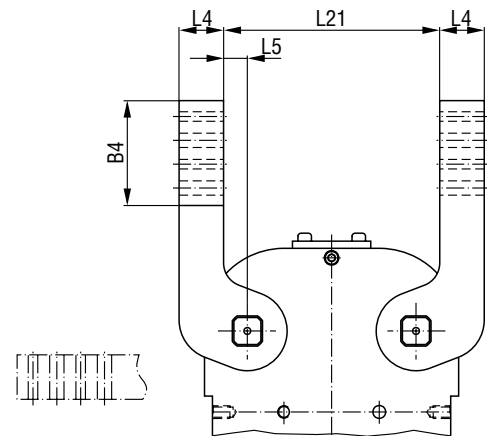
Model	Clamping arm variant	Order no. for 1 set of lateral clamping arms (1 clamping arm)	Clamping position	Standard opening angle	B2	B4	B9	B10	B11	B12
82D63-523C900B	lateral, left lateral, right lateral, both sides	8JG-070-1-01	vertical	180°	144	74	9	30	105	30

Model	Clamping arm variant	Order no. for 1 set of lateral clamping arms (1 clamping arm)	B31	D2	D3	L4	L5	L10	L20	L21	R2
82D63-523C900B	lateral, left lateral, right lateral, both sides	8JG-070-1-01	±0,02	H7 ∅	∅	28	15	20	20	136	28

Drawing shows standard mounting (L20) with four lateral clamp arms



Drawing shows further mounting possibility (L21)

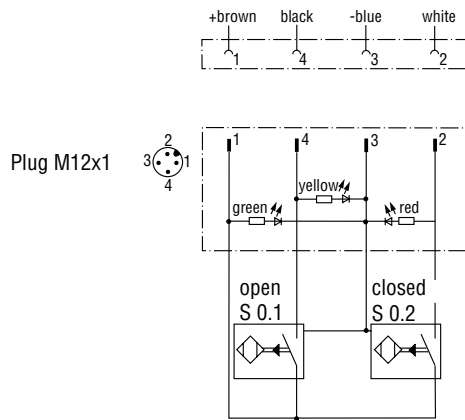


82D40-2/82D63-5

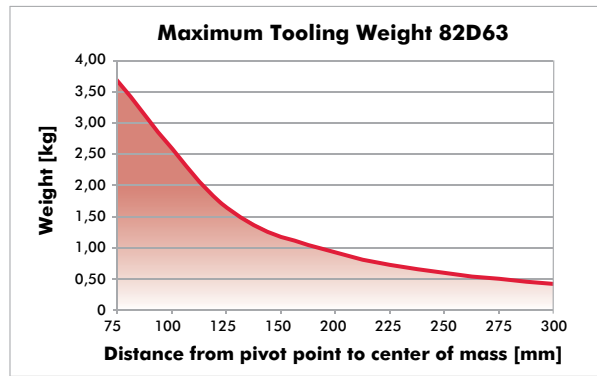
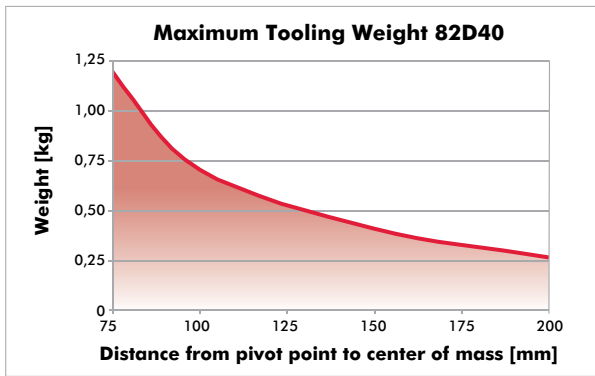
Enclosed Pneumatic Power Clamps | Dual Arm | Technical Specifications

Wiring diagram of electrical sensing system

Sensing system immune to interference from d.c. arc welding and a.c. arc welding

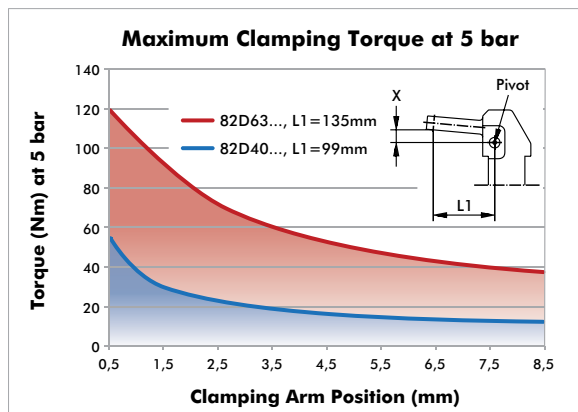


Concept guideline (with reference to axis of clamping arm rotation)

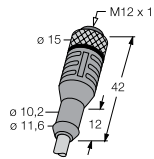


All details apply under an air pressure of 6 bar and opening and closure times of 1 second each

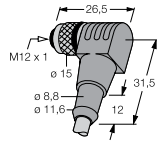
Diagram of clamping torque



Clamping Arms		Order no. for Structural component		Comment
Clamping are variant	Clamping position	82D40-223C900B	82D63-523C900B	
U-central	vertical	8JG-065-1-01	8JG-069-1-01	sets of U-type clamping arms consist of clamping arm, links and screws
lateral right/left	vertical	8JG-066-1-01¹⁾	8JG-070-1-01²⁾	sets of lateral clamping arms consist of 1) clamping arm, links and screws 2) clamping arm and set screws you need 2 sets of clamping arms
lateral both sides	vertical	8JG-066-1-01¹⁾	8JG-070-1-01²⁾	you need 4 sets of clamping arms



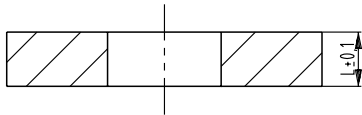
Connector socket
M12x1 straight, 5-pin

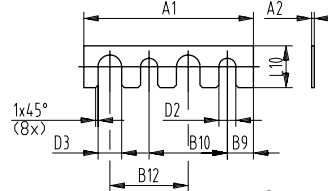


Connector socket
M12x1 angular, 4-pin

Connector Cable (includes 1 connector socket & 5 m cable)	Order no. for Structural component	
	82D40-223C900	82D63-523C900
Connector socket M12x1 straight, 5-pin	8EL-002-1	8EL-002-1
Connector socket M12x1 angular, 4-pin	8EL-003-1	8EL-003-1

Opening Angle Limiter	Order no. for Structural component			
	82D40-223C900		82D63-523C900	
Angle	Length	Order No.	Length	Order No.
180° (Standard)	11,4mm	8CE-342-1	14,4mm	8CE-362-1
160°	15,1mm	8CE-340-1	20,0mm	8CE-360-1
140°	18,5mm	8CE-338-1	24,8mm	8CE-358-1
120°	22,2mm	8CE-336-1	29,6mm	8CE-356-1
100°	25,8mm	8CE-334-1	34,3mm	8CE-354-1
80°	28,0mm	8CE-332-1	39,0mm	8CE-352-1
60°	33,0mm	8CE-330-1	43,8mm	8CE-350-1
40°	37,0mm	8CE-328-1	49,1mm	8CE-348-1
20°	41,8mm	8CE-326-1	56,2mm	8CE-346-1



Shim Plates (for clamping arm)	Fit for model 82D40-2								Fit for model 82D63-5									
	Model	A1	A2	D2	D3	B9	B10	B12	L10	Model	A1	A2	D2	D3	B9	B10	B12	L10
	82ZB-SH4001		0,1							82ZB-SH5001		0,1						
	82ZB-SH4002		0,2							82ZB-SH5002		0,2						
	82ZB-SH4005	42	0,5	6,5	7	6	20	20	12	82ZB-SH5005	65	0,5	6,5	9	10	30	30	16
	82ZB-SH4010		1,0							82ZB-SH5010		1,0						
	82ZB-SH4020		2,0							82ZB-SH5020		2,0						
	82ZB-SH4050		5,0							82ZB-SH5050		5,0						

Spare Parts	Order no. for Structural component	
	82D40-2	82D63-5
Cylinder	8PW-016-1	8PW-024-2
Integrated sensing system C9 Connector plug M12x1	8EA-024-2	8EA-024-2