

# DESTACO Custom Catalog

12/29/2021

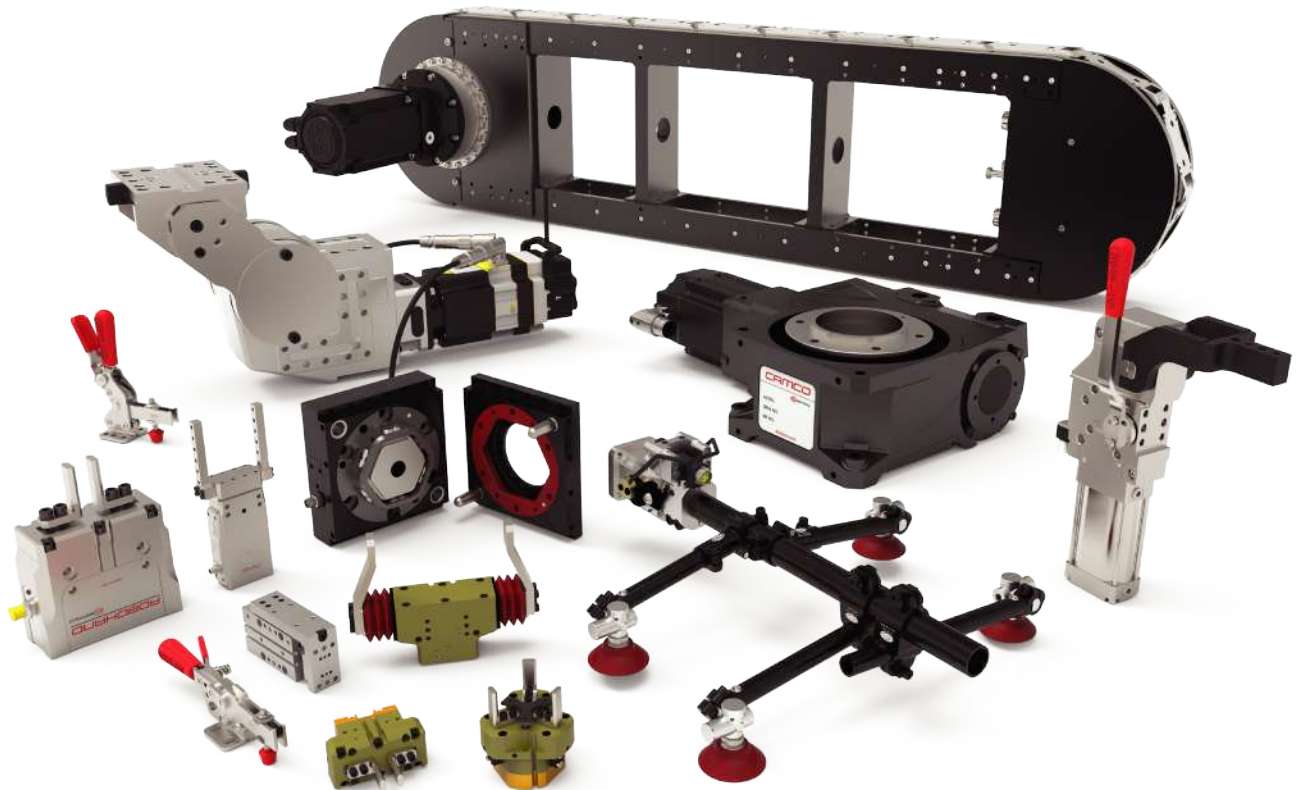


**CESEHSA**

México

[info@cesehsa.com.mx](mailto:info@cesehsa.com.mx)

[cesehsa.com.mx](http://cesehsa.com.mx)



# DESTACO Custom Catalog

12/29/2021

This catalog is a custom document and the products included is based on your unique selection from portions of complete catalogs that already exist. Please refer to our full catalogs for more information on products not included in this customized document.

## Table of Contents

<b>Standard Hook Pin Clamps</b>	<b>PC-HPC-1</b>
<b>Tolerance Compensating Hook Pin Clamps</b>	<b>PC-HPC-11</b>
<b>Pallet Clamp</b>	<b>PC-HPC-23</b>
<b>Precision Guides</b>	<b>PC-PLS-1</b>

# DESTACO Custom Catalog

12/29/2021

## Table of Contents (continued)

# 82P25-2

## Pneumatic Pin Clamp | Ordering and Technical Information

82P25-2 - 00 D8 XX

**Size**  
82P25-2

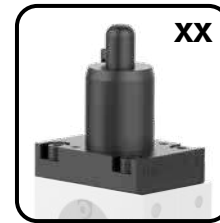
**Description**  
25 mm Cylinder  
(G1/8 and NPT 1/8 Ports)

**Tip**  
00  
08-22

**Description**  
without centering pin  
with customer specified round  
centering pin from Ø8-22 mm

**Serial Number**  
XX

**Description**  
Customer specified Base,  
Clamping Hook and Centering Pin  
*Must contact factory with specifications  
to complete order number*



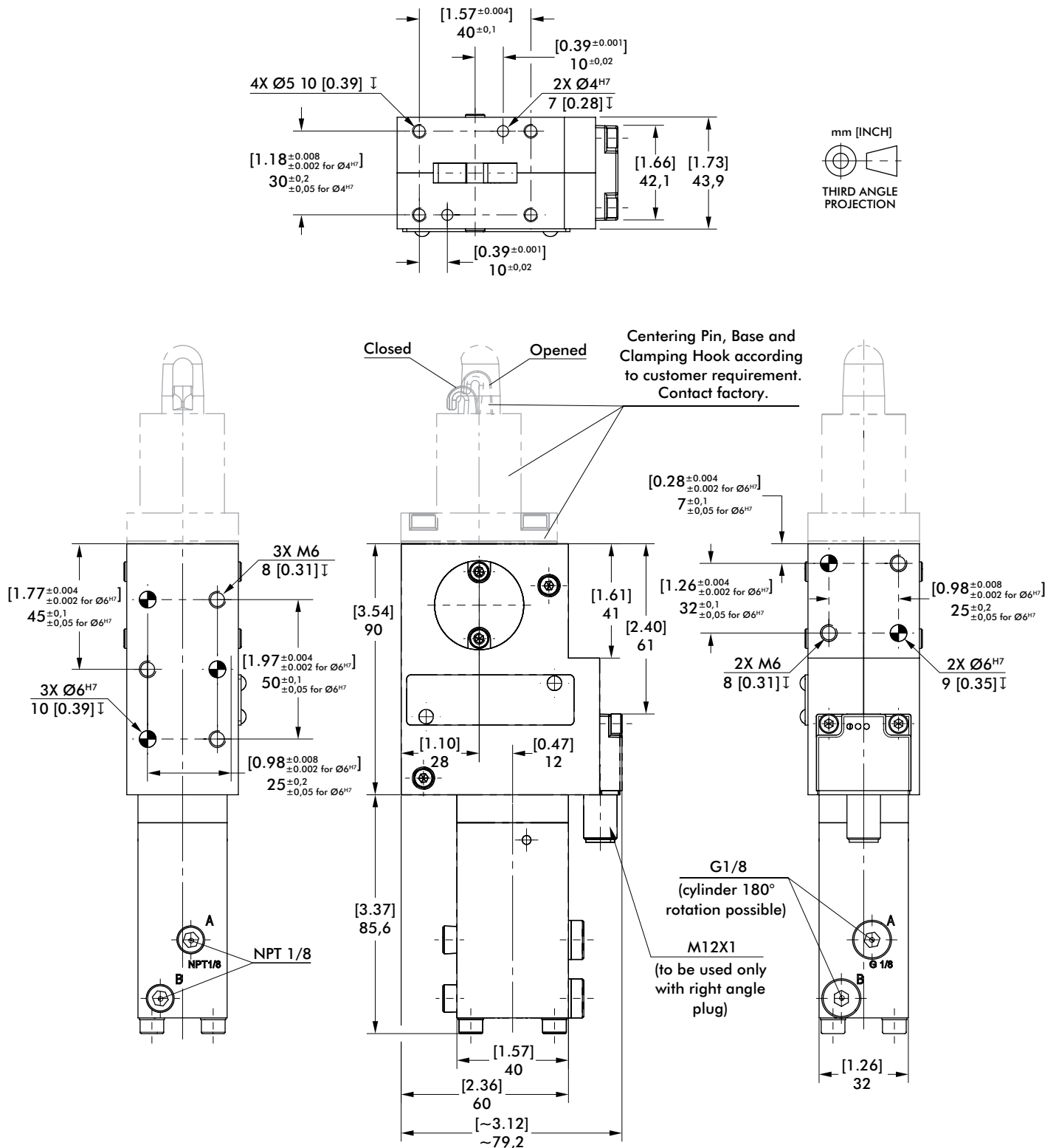
**Sensor**  
D8

**Description**  
Inductive Sensing System with  
M12x1 Connector (8EA-161-1)



82P25-2XX

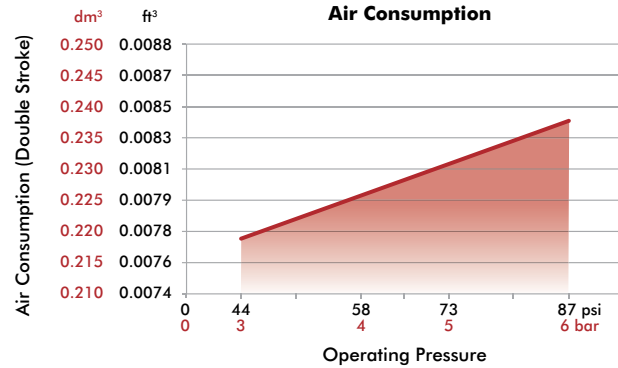
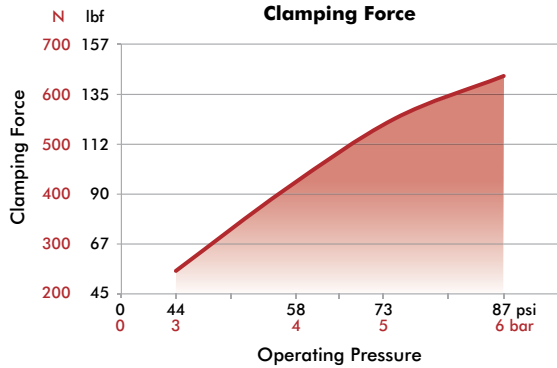
Specification	Unit	82P25-2
Max. Clamping Force @ 5 bar	[lbf] N	[124] 550
Max. Operating Pressure	bar [psi]	[87] 6
Piston Diameter	[in] mm	[1.57] 40
Air Consumption per Double Stroke @ 6 bar [87psi]	[in <sup>3</sup> ] liter	[15.26] 0,25
Weight	[lb] kg	[2.07] 0,94



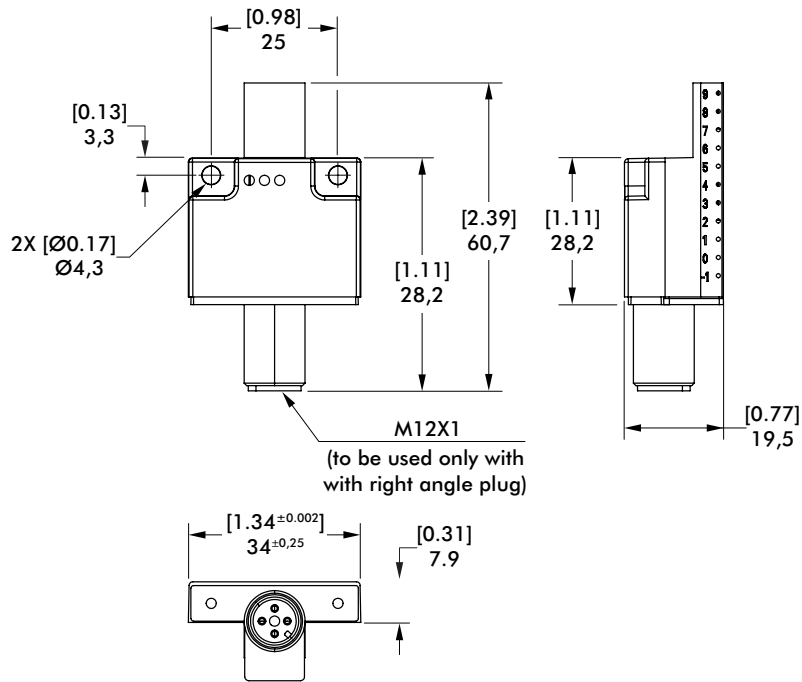
# 82P25-2 SENSORS

## Pneumatic Pin Clamp | Dimensions and Technical Specifications

### Clamping Force and Air Consumption

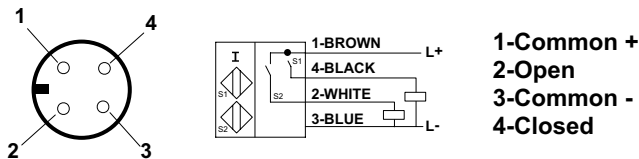


### D8 Inductive Sensing System



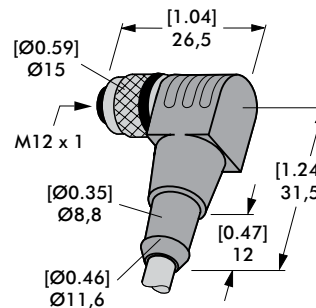
### Inductive Sensor Wiring Diagram

Sensing system immune to interference from AC / DC arc welding.



### Sensor Cable Accessories

Sensor Cables (1 connector & 5m cable)	Order no.
M12x1 connector, 90° angular, 4-pin	8EL-003-1



Angular Cable  
8EL-003-1



# 82P30-3/82P35-3

## Pneumatic Pin Clamp | Ordering and Technical Information

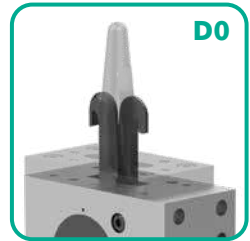
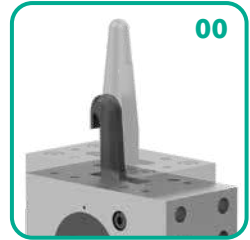


### Clamping Hook

- 00
- D0

### Description

- 00 Single Hook (Standard)
- D0 Double Hook

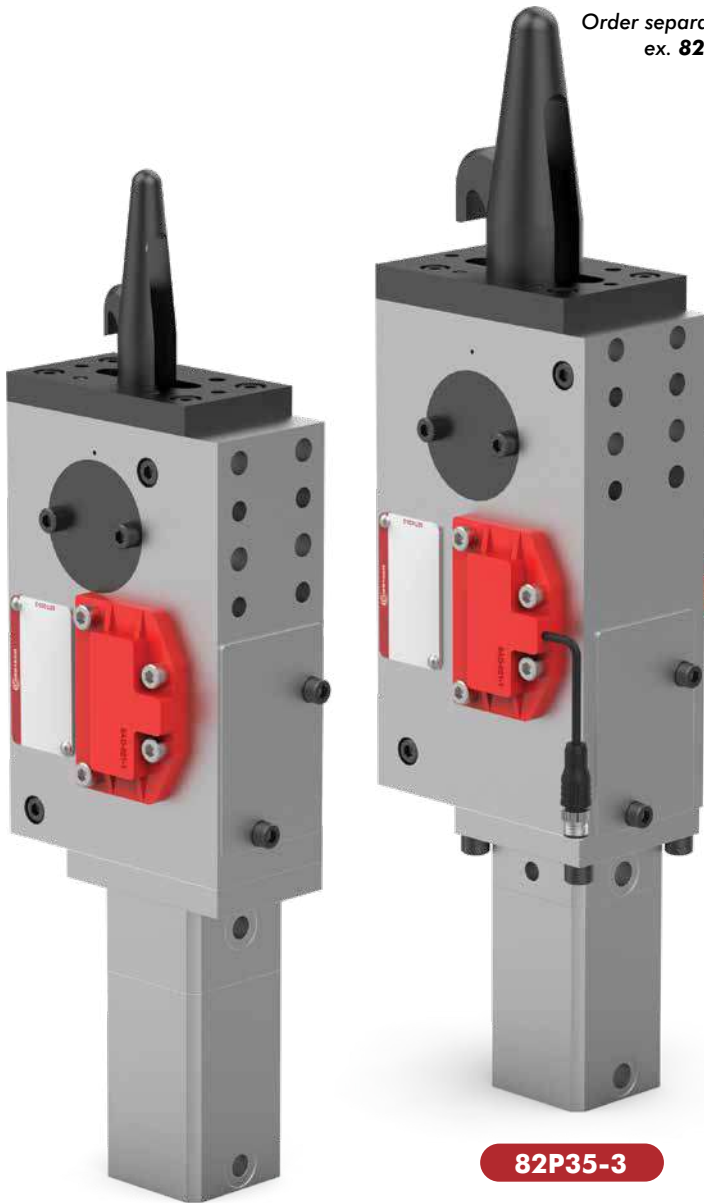
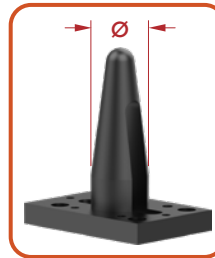


Size	Description
30-3	30 mm Cylinder (G1/8 Port)
35-3	35 mm Cylinder (G1/8 Port)

### Centering Pin

Ø Range for 82P30-3	Ø Range for 82P35-3
20 20,0 - 23,0 mm	30 28,1 - 33,0 mm
25 23,1 - 28,0 mm	40 33,1 - 45,0 mm

Order separately. 82P3X-3XX-XX,X  
ex. 82P30-320-21,1



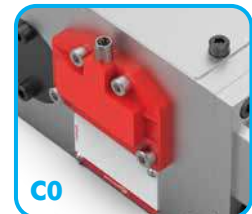
82P30-3

82P35-3

### Sensor

### Description

- 00 Without Sensing System
- C0 Inductive Sensing System with M8x1 Connector (8EA-012-2)
- B8 Inductive Sensing System with M12x1 Connector (8EA-030-1)



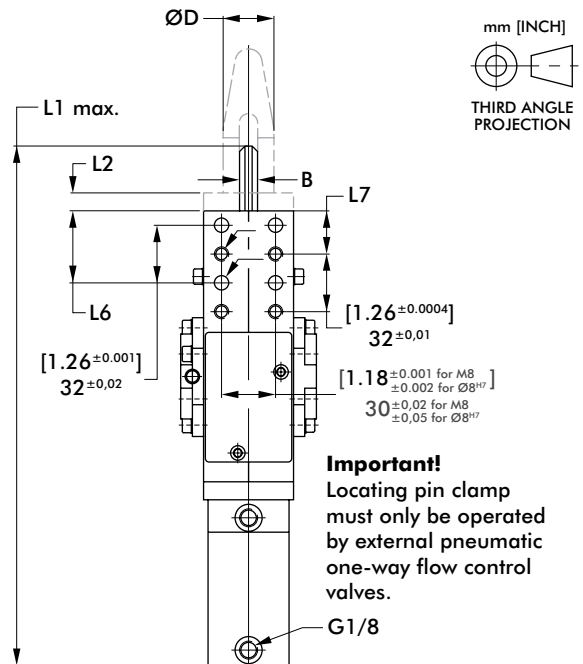
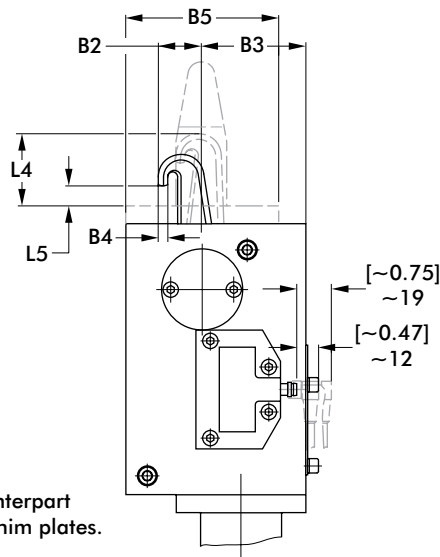
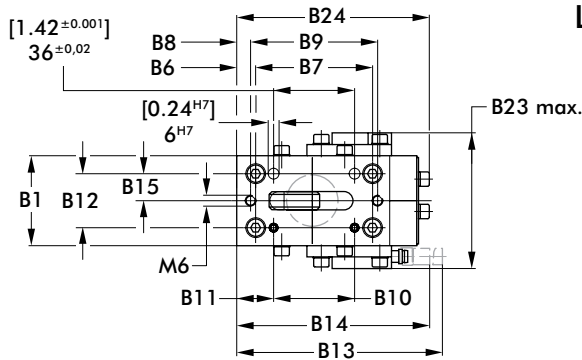
Specification	Unit	82P30-3	82P35-3
Max. Clamping Force @ 6 bar	[lbf] N	[450] 2000	[790] 3500
Max. Operating Pressure	bar [psi]	[87] 6	[87] 6
Piston Diameter	[in] mm	[1.18] 30	[1.38] 35
Air Consumption per Double Stroke @ 6 bar [87psi]	[in <sup>3</sup> ] liter	[48.82] 0,8	[48.82] 0,8
Weight	[lb] kg	[6.61] 3	[7.50] 3,4



# 82P30-3/82P35-3

## Pneumatic Pin Clamp | Dimensions and Technical Specifications

Locating clamp with single-sided clamping hook  
Centering Pin (has to be ordered separately)



mm [INCH]  
THIRD ANGLE PROJECTION

Dimensioning of the counterpart should allow the use of shim plates.

Medium: air, max. 6 bar, operation with oil-free air is permissible.

**Important!**  
Locating pin clamp must only be operated by external pneumatic one-way flow control valves.

### Technical Data

Model	Piston Ø	Centering Pin ØD [-0.002] -0,5	B [-0.004] -0,1	B1	B2	B3	B4	B5	B6 [±0.004] ±0,1	B7 [±0.008] ±0,2	B8	B9 [±0.008] ±0,2	B10 [±0.004] ±0,1
82P30-3200000		[0.79-0.91] 20,0-23,0			[0.73] 18,5		[0.20] 5						
82P30-3250000	[1.18] 30	[0.91-1.10] 23,1-28,0	[0.39] 10	[1.97] 50	[0.81] 20,5	[2.28] 58	[0.21] 5,25	[3.35] 85	[0.41] 10,5	[2.56] 65	[0.41] 10,5	[2.56] 65	[1.38] 35
82P30-3300000		[1.10-1.30] 28,1-33,0			[0.89] 22,5								
82P35-3400000	[1.38] 35	[1.30-1.77] 33,1-45,0	[0.47] 12	[2.36] 60	[1.34] 34	[2.09] 53	[0.28] 7	[3.54] 90	[0.75] 19	[2.40] 61	[0.28] 7	[2.99] 76	[1.46] 37

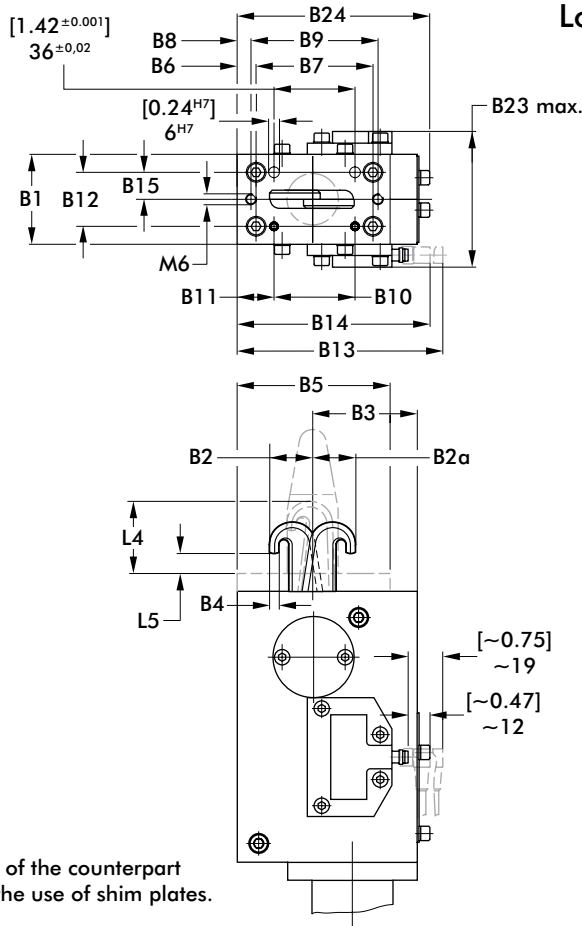
Model	B11 [±0.004] ±0,1	B12* [±0.002] ±0,5	B13 max.	B14 max.	B15* [±0.001] ±0,025	B23 max.	B24	L1 max.	L2 [±0.004] ±0,1	L4 ~	L5 [±0.002] ±0,5	L6 [±0.002] ±0,5	L7 [±0.004] ±0,1
82P30-3200000								[11.97] 304		[1.57] 40			
82P30-3250000	[1.00] 25,5	[1.18] 30	[4.49] 114	[4.21] 107	[0.59] 15	[2.97] 75,4	[4.21] 107	[12.05] 306	[0.39] 10	[1.73] 44	[0.45] 11,5	[1.57] 40	[0.94] 24
82P30-3300000										[1.77] 45			
82P35-3400000	[1.22] 31	[1.57] 40			[0.79] 20	[3.36] 85,4		[12.99] 330	[0.47] 12	[2.20] 56	[0.55] 14	[1.50] 38	[0.87] 22

\*Tolerances for dowel holes only

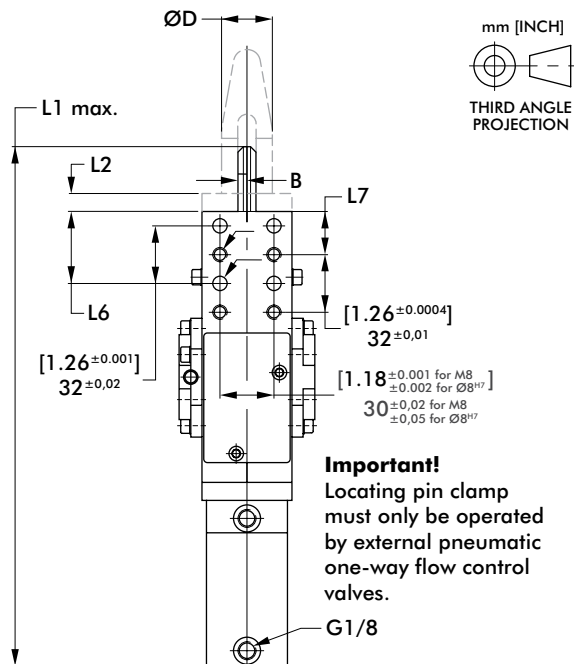
# 82P30-3/82P35-3

## Pneumatic Pin Clamp | Dimensions and Technical Specifications

Locating clamp with double-sided clamping hook  
Centering Pin (has to be ordered separately)



Spare Parts	Order no.	
	82P30-3...	82P35-3...
Cylinder	8PW-019-1	8PW-006-1
Seal kit	8PW-019-1-00	8PW-001-1-00



mm [INCH]  
THIRD ANGLE PROJECTION

Dimensioning of the counterpart should allow the use of shim plates.

Medium: air, max. 6 bar, operation with oil-free air is permissible.

**Important!**  
Locating pin clamp must only be operated by external pneumatic one-way flow control valves.

### Technical Data

Model	Piston Ø	Centering Pin ØD [-0.002 -0,05]	B [-0.004 -0,1]	B1	B2	B2α	B3	B4	B5	B6 [±0.004 ±0,1]	B7 [±0.008 ±0,2]	B8	B9 [±0.000 ±0,2]
82P30-32000D0		[0.79-0.91] 20,0-23,0			[0.73] 18,5	[0.77] 19,5		[0.20] 5					
82P30-32500D0	[1.18] 30	[0.91-1.10] 23,1-28,0	[0.20] 5	[1.97] 50	[0.81] 20,5	[0.85] 21,5	[2.28] 58	[0.21] 5,25	[3.35] 85	[0.41] 10,5	[2.56] 65	[0.41] 10,5	[2.56] 65
82P30-33000D0		[1.10-1.30] 28,1-33,0			[0.89] 22,5	[0.93] 23,5							
82P35-34000D0	[1.38] 35	[1.30-1.77] 33,1-45,0	[0.14] 3,5	[2.36] 60	[1.34] 34	[1.34] 34	[2.09] 53	[0.28] 7	[3.54] 90	[0.75] 19	[2.40] 61	[0.28] 7	[2.99] 76

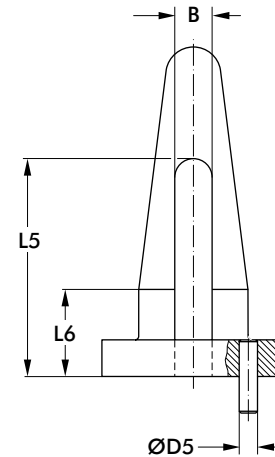
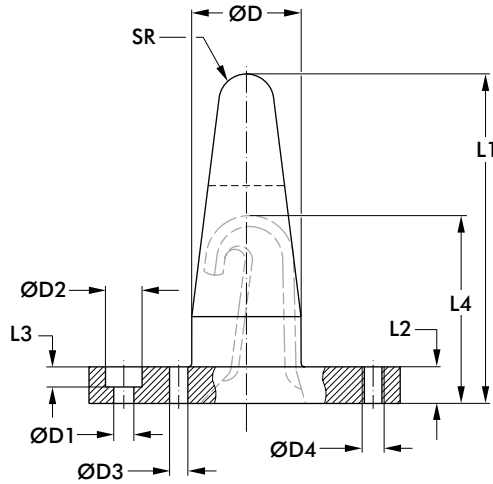
Model	B10 [±0.004 ±0,1]	B11 [±0.004 ±0,1]	B12* [±0.002 ±0,05]	B13 max.	B14 max.	B15* [±0.001 ±0,025]	B23 max.	B24	L1 max.	L2 [±0.004 ±0,1]	L4 ~	L5	L6 [±0.002 ±0,5]	L7 [±0.004 ±0,1]
82P30-32000D0									[11.97] 304		[1.57] 40			
82P30-32500D0	[1.38] 35	[1.00] 25,5	[1.18] 30	[4.49] 114	[4.21] 107	[0.59] 15	[2.97] 75,4	[4.21] 107	[12.05] 306	[0.39] 10	[1.73] 44	[0.45] 11,5	[1.57] 40	[0.94] 24
82P30-33000D0											[1.77] 45			
82P35-34000D0	[1.46] 37	[1.22] 31	[1.57] 40			[0.79] 20	[3.36] 85,4		[12.99] 330	[0.47] 12	[2.20] 56	[0.55] 14	[1.50] 38	[0.87] 22

\*Tolerances for dowel holes only

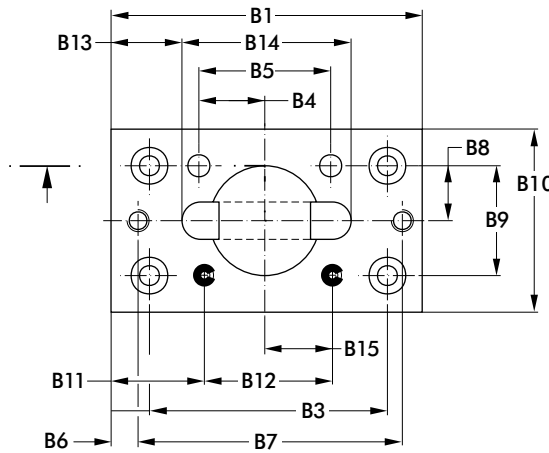
# 82P30-3/82P35-3 CENTERING PINS

Pneumatic Pin Clamp | Dimensions and Technical Specifications

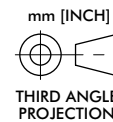
Centering Pin (has to be ordered separately)



Centering pin (accessory part)



Locating pin clamp with single-sided clamping hook and centering pin



Base locating clamp model	Order no.	ØD [-0.002 -0,05]	ØD1	ØD2	ØD3 H7	ØD4	ØD5 H11	SR	L1	L2 [+0.004 +0,1]	L3	L4	L5	L6	B	B1
82P30-320....	82P30-3-__-1)	[0.79-0.91] 20,0-23,0						[0.20] 5	[3.15] 80			[2.05] 52				
82P30-325....	82P30-3-__-1)	[0.91-1.10] 23,1-28,0	[0.22]	[0.39]	[0.24]	M6	[0.20] 5	[0.30] 7.5	[3.54] 90	[0.39] 10	[0.24] 6	[2.13] 54	[2.34] 59.5	[0.98] 25	[0.40] 10.2	[3.35] 85
82P30-330....	82P30-3-__-1)	[1.10-1.30] 28,1-33,0										[2.17] 55				
82P35-340....	82P35-3-__-1)	[1.30-1.77] 33,1-45,0						[0.31] 8	[4.02] 102	[0.47] 12		[2.68] 68	[2.89] 73.5	[1.18] 30	[0.48] 12.2	[3.54] 90

Base locating clamp model	Order no.	B2 [±0.004 ±0,1]	B3 [±0.001 ±0,2]	B4 [±0.0001 ±0,02]	B5 [±0.0001 ±0,02]	B6	B7 [±0.001 ±0,2]	B8* [±0.001 ±0,025]	B9* [±0.002 ±0,05]	B10	B11 [±0.004 ±0,1]	B12 [±0.004 ±0,1]	B13	B14	B15 [±0.002 ±0,05]	
82P30-320....	82P30-3-__-1)															
82P30-325....	82P30-3-__-1)	[0.41] 10.5	[2.56] 65	[0.71] 18	[1.42] 36		[0.41] 10.5	[2.56] 65	[0.59] 15	[1.18] 30	[1.97] 50	[1.00] 25.5	[1.38] 35	[0.76] 19.4	[1.82] 46.2	[0.73] 18.5
82P30-330....	82P30-3-__-1)															
82P35-340....	82P35-3-__-1)	[0.75] 19	[2.40] 61				[0.28] 7	[2.99] 76	[0.79] 20	[1.57] 40	[2.36] 60	[1.22] 31	[1.46] 37	[0.63] 16	[2.44] 62	[0.83] 21

\* Tolerance for dowel hole

1) \_\_-\_\_ = centering pin diameter "D"

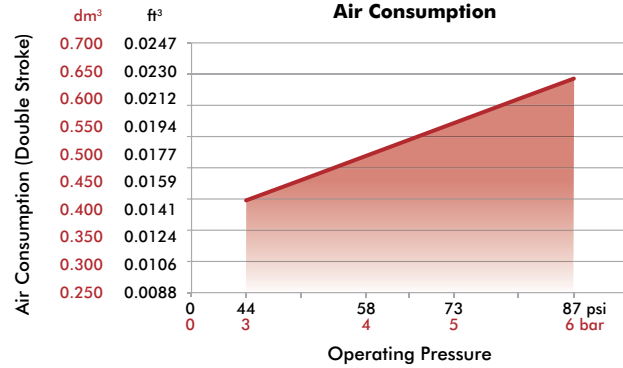
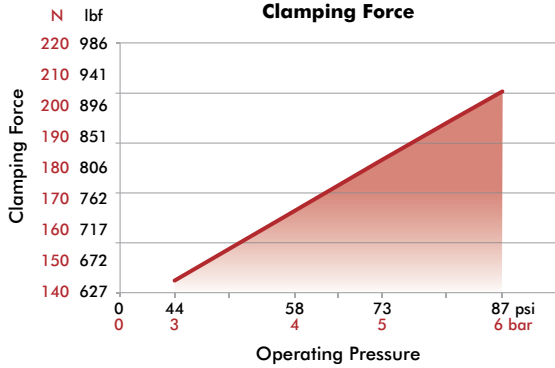
Ordering example: To order the centering pin for locating pin clamp 82P30-325C000 with pin diameter "D" = 26.5 mm: "82P30-3-26.5"



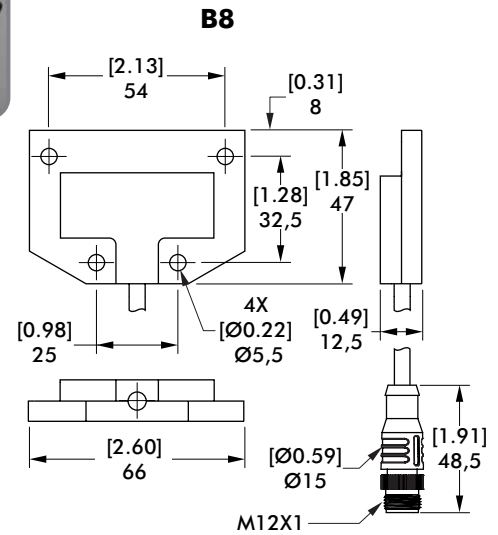
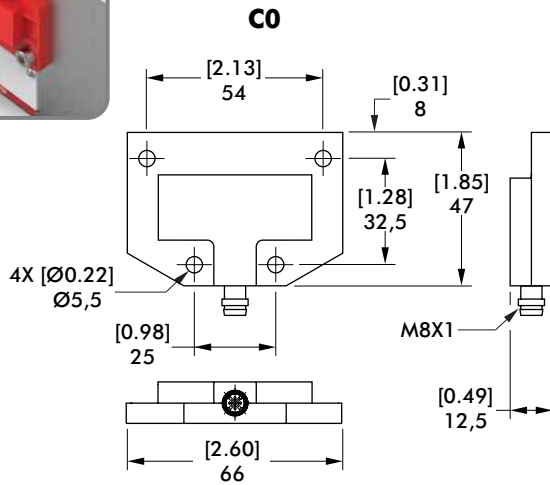
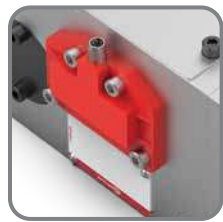
# 82P30-3/82P35-3 SENSORS

## Pneumatic Pin Clamp | Dimensions and Technical Specifications

### Clamping Force and Air Consumption

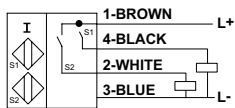
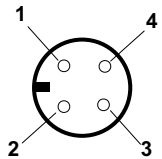


### C0 and B8 Inductive Sensing Systems



### Inductive Sensor Wiring Diagram

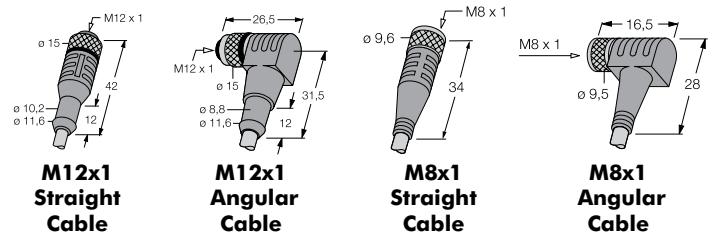
Sensing system immune to interference from A.C./D.C. arc welding.

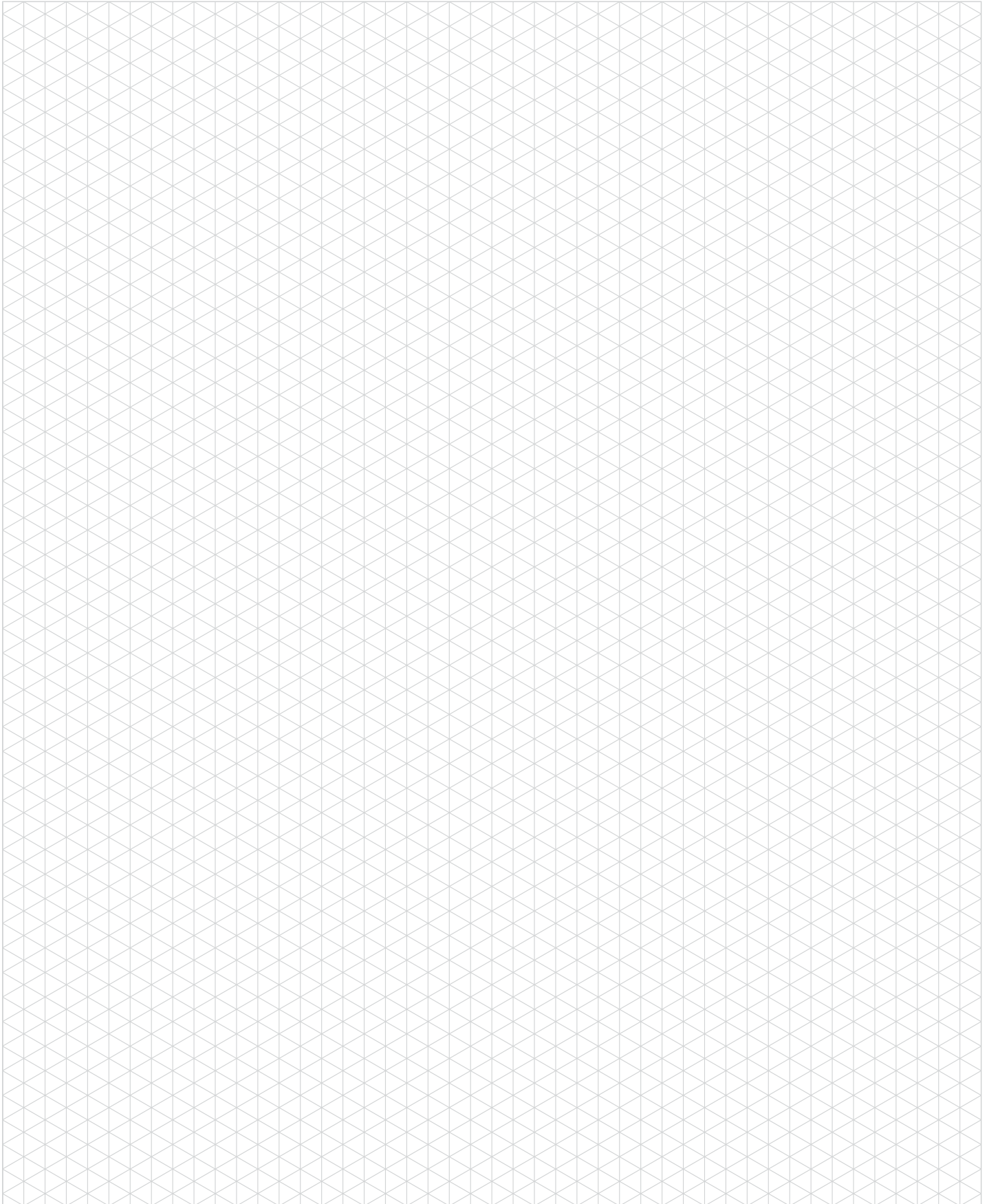


1-Common +  
2-Open  
3-Common -  
4-Closed

### Sensor Cable Accessories

Description	Order no.
<b>B8 Sensor Cables (1 connector &amp; 5 m cable)</b>	
M12x1 connector, straight, 5-pin	<b>8EL-002-1</b>
M12x1 connector, 90° angular, 4-pin	<b>8EL-003-1</b>
<b>C0 Sensor Cables (1 connector &amp; 5 m cable)</b>	
M8x1 connector, straight, 5-pin	<b>8EL-009-1</b>
M8x1 connector, 90° angular, 4-pin	<b>8EL-007-1</b>





# 82P50/82P63

Pneumatic Pin Clamp | Tolerance Compensating | Ordering and Technical Information

**82P50-720** **D8** **A** **0** **01** **00**

Base Model	Description
<b>82P50-720</b>	50 mm Tandem Cylinder (G1/8 Port)
<b>82P63-720</b>	63 mm Tandem Cylinder (G1/8 Port)

Tolerance	Description
<b>A</b>	0-6 mm [0-0.236 in] tolerance compensation

Sensor	Description
<b>D8</b>	Inductive Sensing System with M12x1 Connector (8EA-151-1)



**82P50-720**

**82P63-720**

Specification	Unit	82P50	82P63
Clamping Force @ 5 bar	N [lbf]	1500 [337]	2500 [562]
Max. Operating Pressure	bar [psi]	6 [87]	6 [87]
Air Consumption			
Clamping @ 6 bar	liter [in³]	0,66 [40.28]	0,92 [56.14]
Opening @ 6 bar	liter [in³]	0,33 [20.13]	0,46 [28.07]
Weight	kg [lb]	3,2 [7.05]	3,9 [8.59]
Time:			
Clamping	sec	0,3	0,3
Opening	sec	0,3	0,3

**Hooks** For 82P50  
**01** for Flange Hole  
**03** for Flat Hole



**Hooks** For 82P63  
**02** for Flange Hole  
**04** for Flat Hole



**Centering Pin** For 82P50 with Hook  
**00** None **01** or **03**  
**01** 18 mm Round **01** or **03**  
**02** 20 mm Round **01** or **03**  
**06** 19,9 mm Round **01** or **03**  
**07** 19,9 mm Diamond **01** or **03**



**Centering Pin** For 82P63 with Hook  
**00** None **02** or **04**  
**03** 30 mm Round **02**  
**04** 30 mm Diamond **02**  
**05** 25 mm Round **02**  
**08** 23 mm Round **02**  
**09** 28 mm Round **02**  
**10** 40 mm Round **04**  
**11** 40 mm Diamond **04**

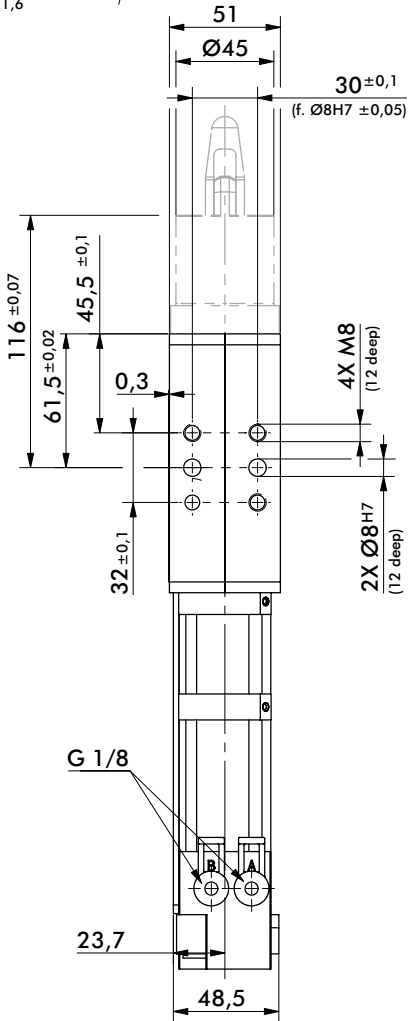
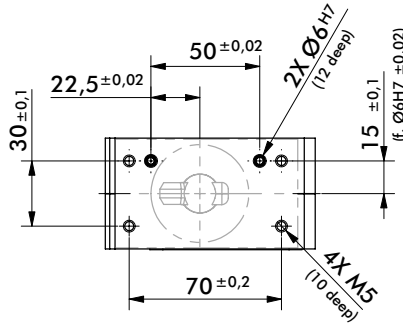
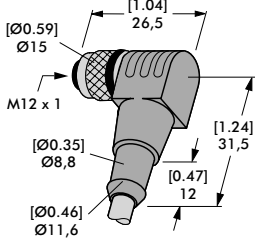


# 82P50

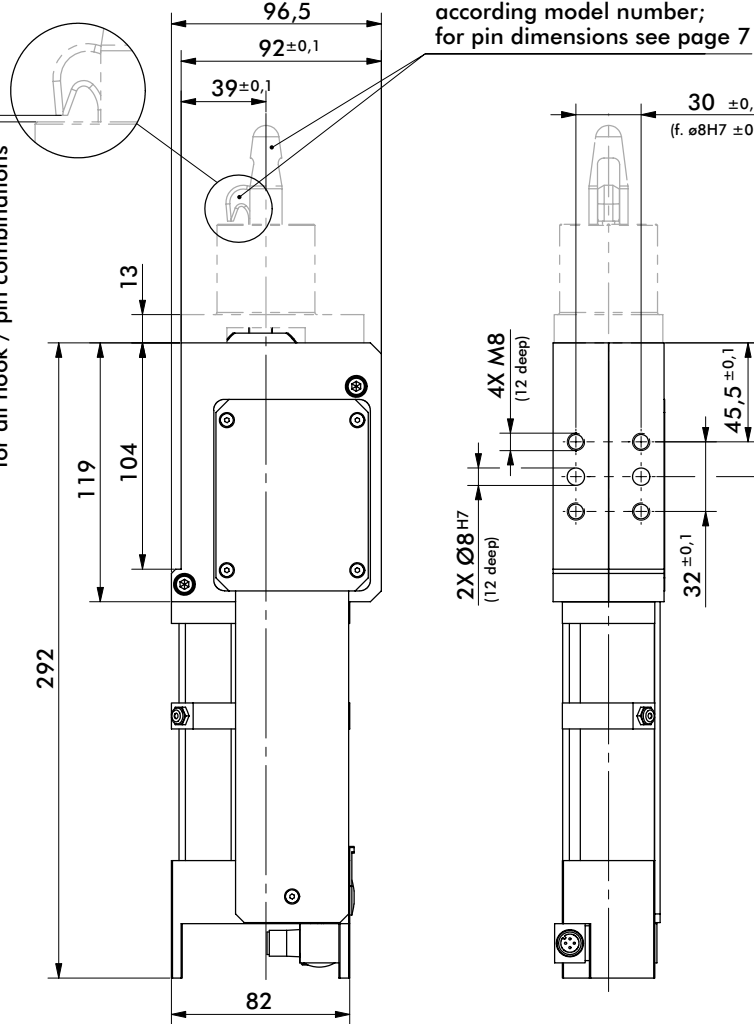
## Pneumatic Pin Clamp | Tolerance Compensating | Dimensions and Technical Specifications

Sensor Cables Order separately

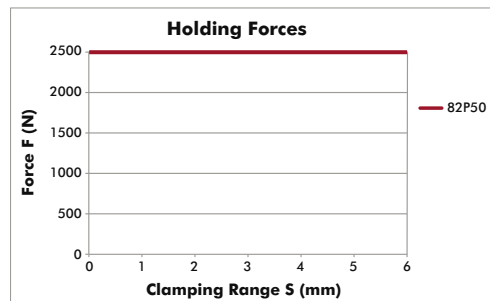
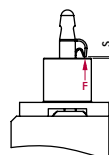
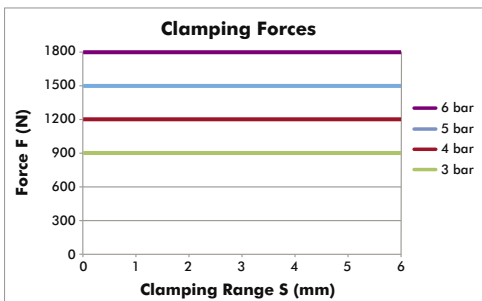
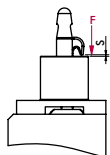
Description	Order no.
M12x1, Angular, 4-pin Connector with 5 m [16 ft.] Cable	8EL-003-1



0 - 6 mm clamping range  
for all hook / pin combinations



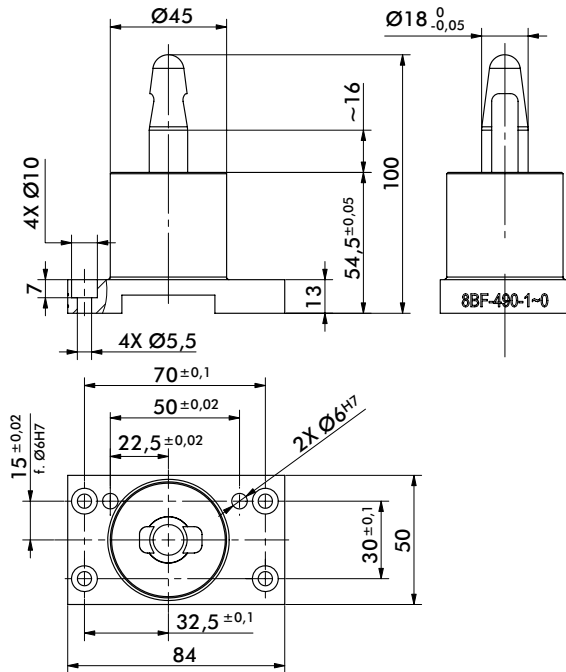
Operation with oil-free air is permissible.



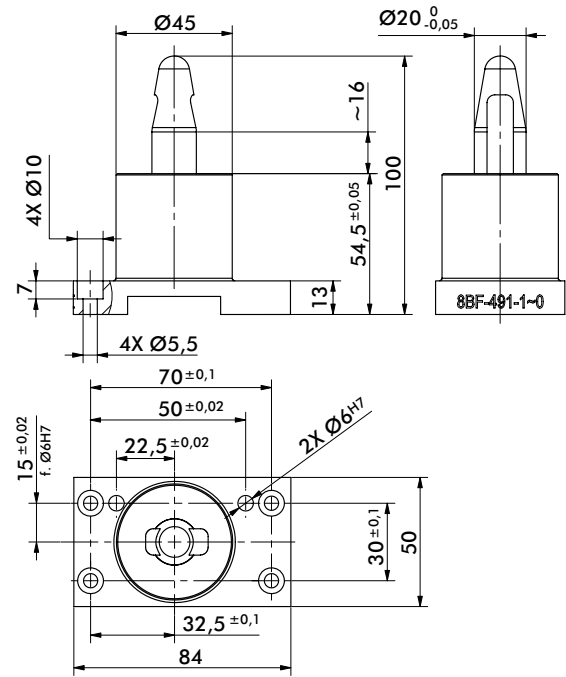


# 82P50 CENTERING PINS

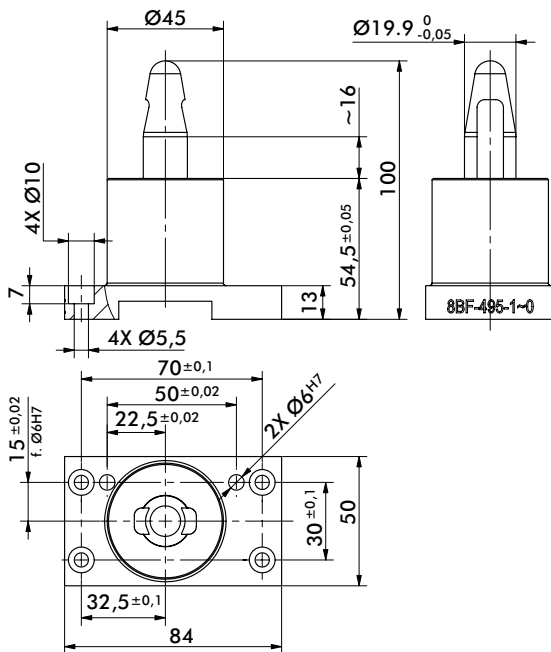
Pneumatic Pin Clamp | Tolerance Compensating | Dimensions and Technical Specifications



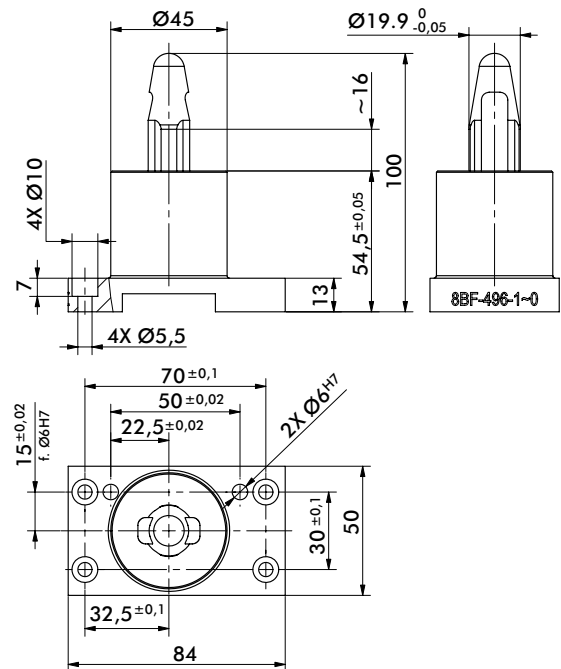
Specification	8BF-490-1
Weight	~0,60 Kg
Diameter and Tolerance	Ø18 -0.05
Shape	Round



Specification	8BF-491-1
Weight	~0,60 Kg
Diameter and Tolerance	Ø20 -0.05
Shape	Round



Specification	8BF-495-1
Weight	~0,60 Kg
Diameter and Tolerance	Ø19,90 -0.05
Shape	Round



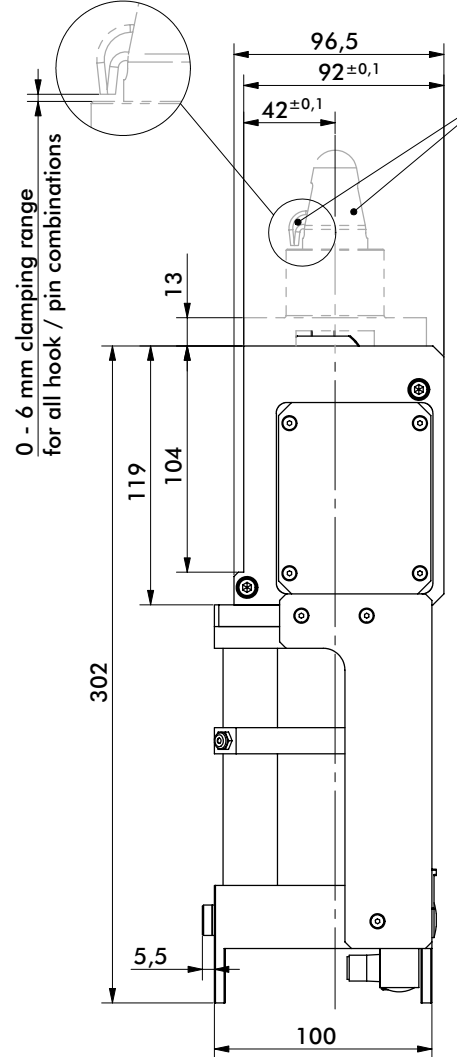
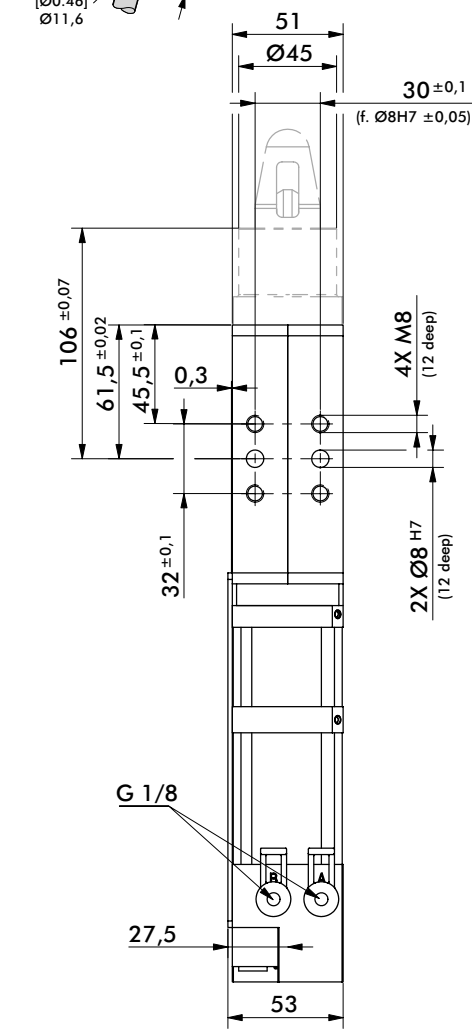
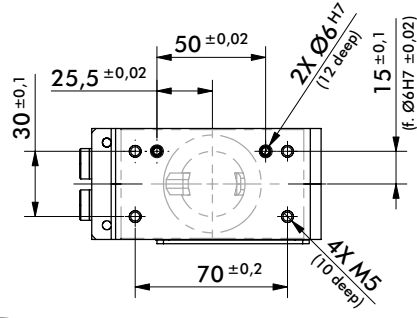
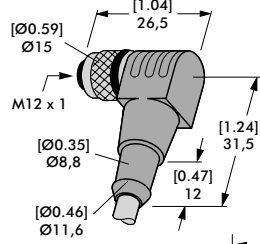
Specification	8BF-496-1
Weight	~0,60 Kg
Diameter and Tolerance	Ø19,90 -0.05
Shape	Diamond

# 82P63

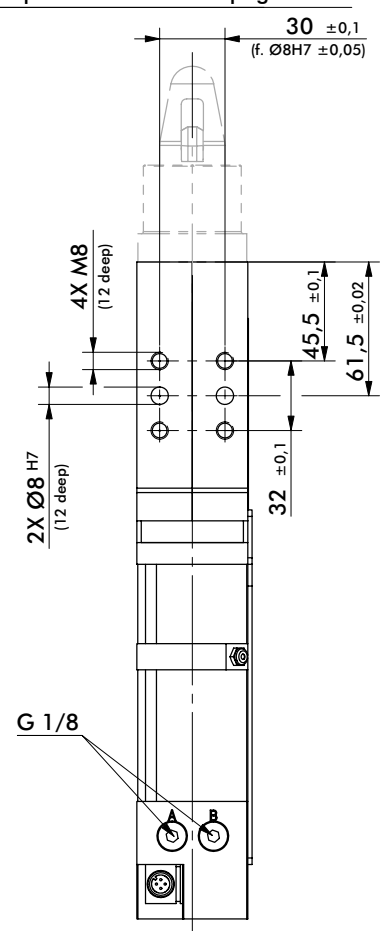
## Pneumatic Pin Clamp | Tolerance Compensating | Dimensions and Technical Specifications

Sensor Cables Order separately

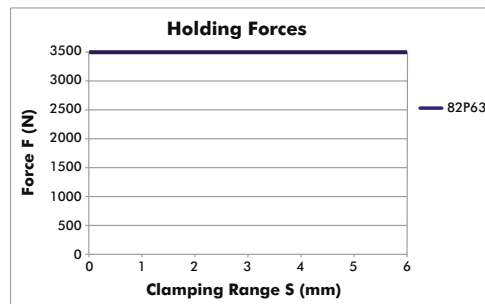
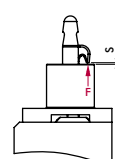
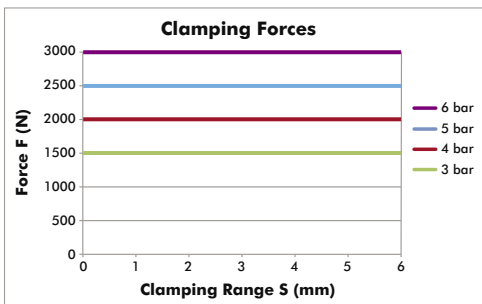
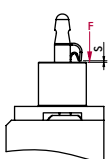
Description	Order no.
M12x1, Angular, 4-pin Connector with 5 m [16 ft.] Cable	8EL-003-1



according model number; for pin dimensions see pages 9-10

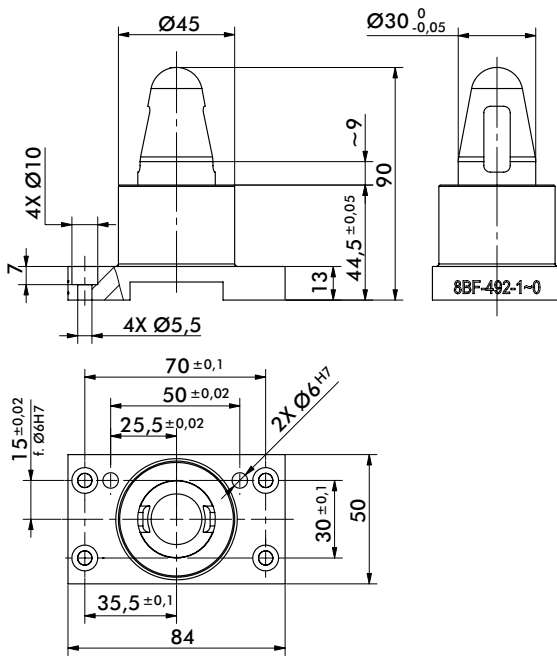


Operation with oil-free air is permissible.

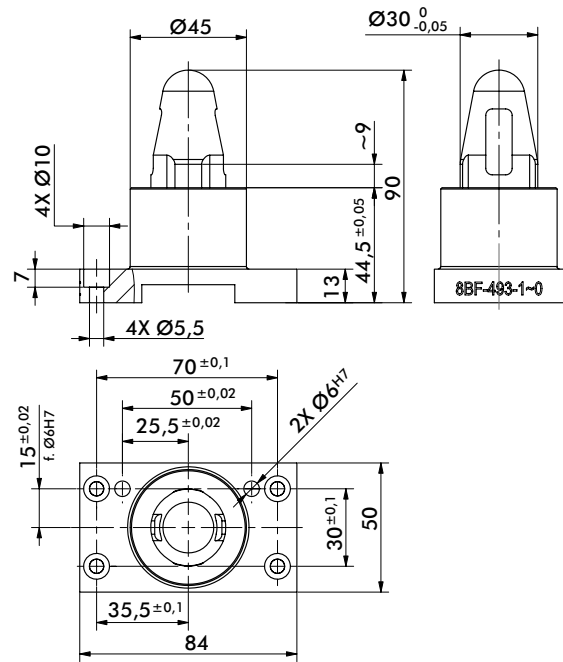


# 82P63 CENTERING PINS

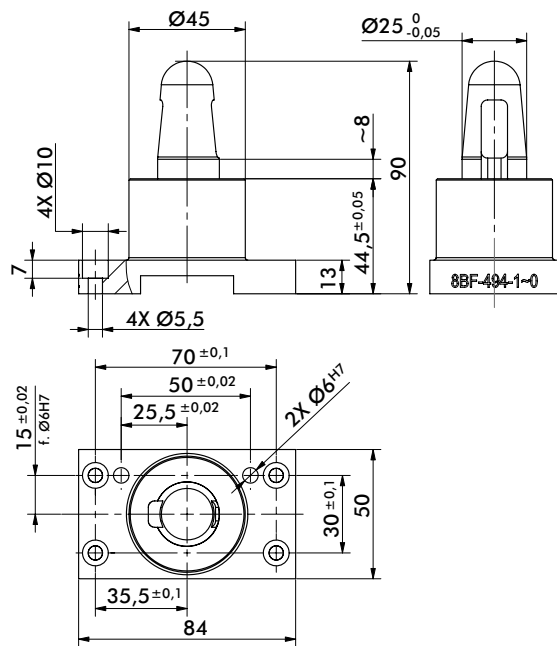
Pneumatic Pin Clamp | Tolerance Compensating | Dimensions and Technical Specifications



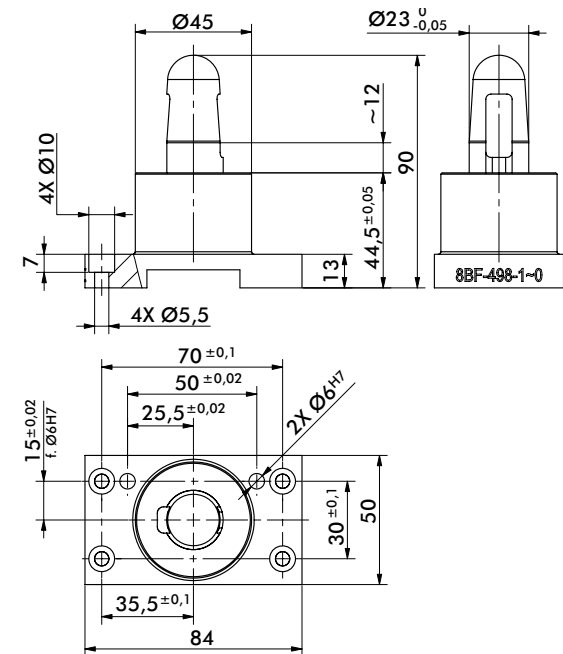
Specification	8BF-492-1
Weight	~0,57 Kg
Diameter and Tolerance	Ø30 -0.05
Shape	Round



Specification	8BF-493-1
Weight	~0,57 Kg
Diameter and Tolerance	Ø30 -0.05
Shape	Diamond



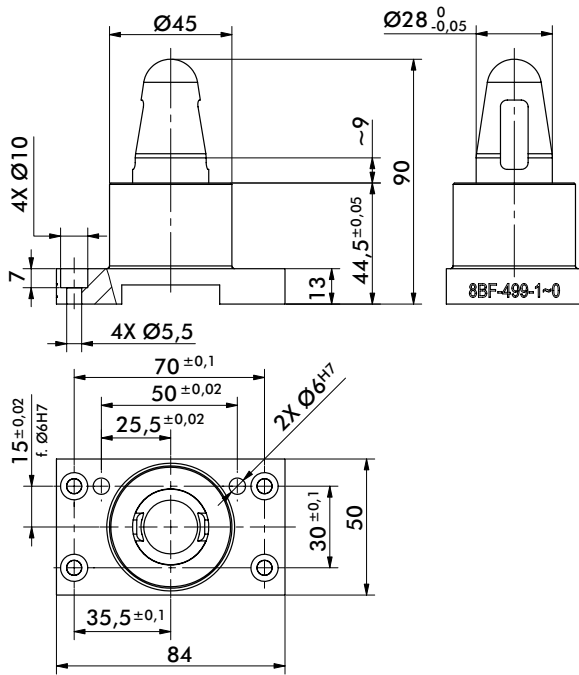
Specification	8BF-494-1
Weight	~0,54 Kg
Diameter and Tolerance	Ø25 -0.05
Shape	Round



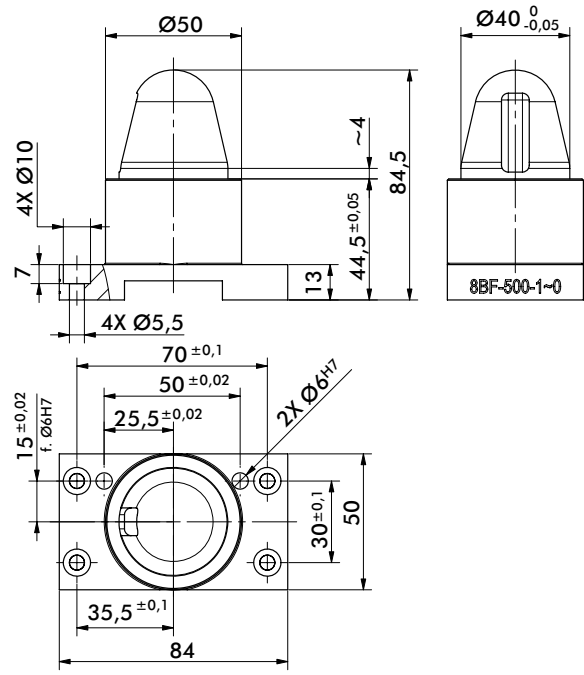
Specification	8BF-498-1
Weight	~0,53 Kg
Diameter and Tolerance	Ø23 -0.05
Shape	Round

# 82P63 CENTERING PINS

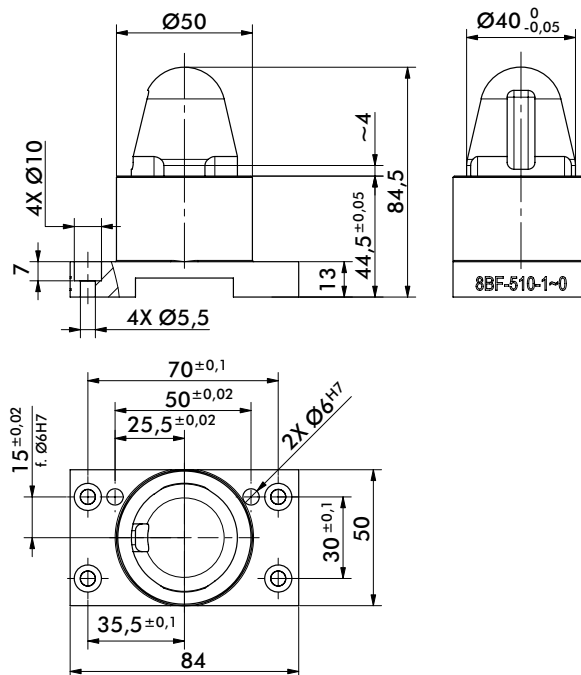
Pneumatic Pin Clamp | Tolerance Compensating | Dimensions and Technical Specifications



Specification	8BF-499-1
Weight	~0,56 Kg
Diameter and Tolerance	Ø28 -0.05
Shape	Round



Specification	8BF-500-1
Weight	~0,68 Kg
Diameter and Tolerance	Ø40 -0.05
Shape	Round

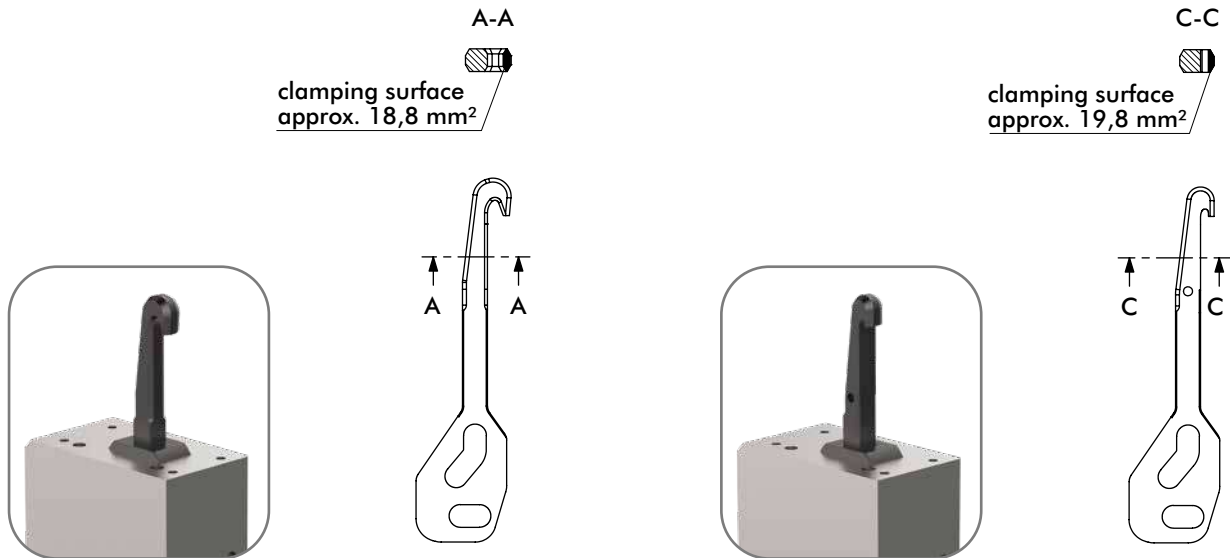


Specification	8BF-510-1
Weight	~0,68 Kg
Diameter and Tolerance	Ø40 -0.05
Shape	Diamond

# 82P50/82P63 CLAMPING HOOKS

Pneumatic Pin Clamp | Tolerance Compensating | Surface Pressure of Clamping Hooks

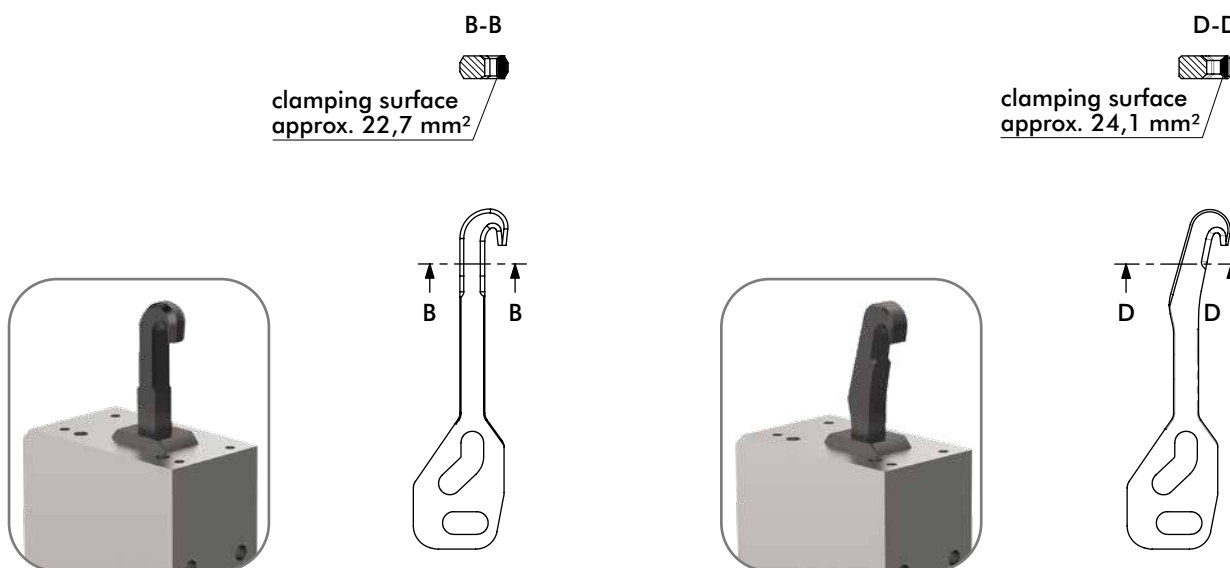
## 82P50



Specification	8JH-162-1			
Pressure [bar]	3.0	4.0	5.0	6.0
Clamping Force [N]	900	1200	1500	1800
Surface Pressure [N/mm <sup>2</sup> ]	48	64	80	96

Specification	8JH-164-1			
Pressure [bar]	3.0	4.0	5.0	6.0
Clamping Force [N]	900	1200	1500	1800
Surface Pressure [N/mm <sup>2</sup> ]	45	61	76	91

## 82P63



Specification	8JH-163-1			
Pressure [bar]	3.0	4.0	5.0	6.0
Clamping Force [N]	1500	2000	2500	3000
Surface Pressure [N/mm <sup>2</sup> ]	66	88	110	132

Specification	8JH-165-1			
Pressure [bar]	3.0	4.0	5.0	6.0
Clamping Force [N]	1500	2000	1500	1800
Surface Pressure [N/mm <sup>2</sup> ]	62	83	104	124

# 82P50-800

## Pneumatic Pin Clamp | Tolerance Compensation | Ordering Information

**82P50-800** **L10** **A** **01** **00** **0**

**Base Model** Description

**82P50-800** Tolerance Compensation  
0 - 5 mm [0 - 0.197 in]

**Blanks** Description

**A** Flat Blanks

**Sensor** Description

**L10** PNP Sensor with M12x1 Cable Connector  
(8EA-158-4-B and 8EA-163-4)

**Finger Direction** Description

- 0** Two Fingers Standard Direction
- 1** Two Fingers Perpendicular to Standard Direction



**Centering Pin Size**

Centering Pin Size	Ø Range
<b>01</b>	15,8 -0,05 mm
<b>02</b>	19,8 -0,05 mm
<b>03</b>	20,3 -0,05 mm
<b>04</b>	29,8 -0,05 mm

**Pin Shape**

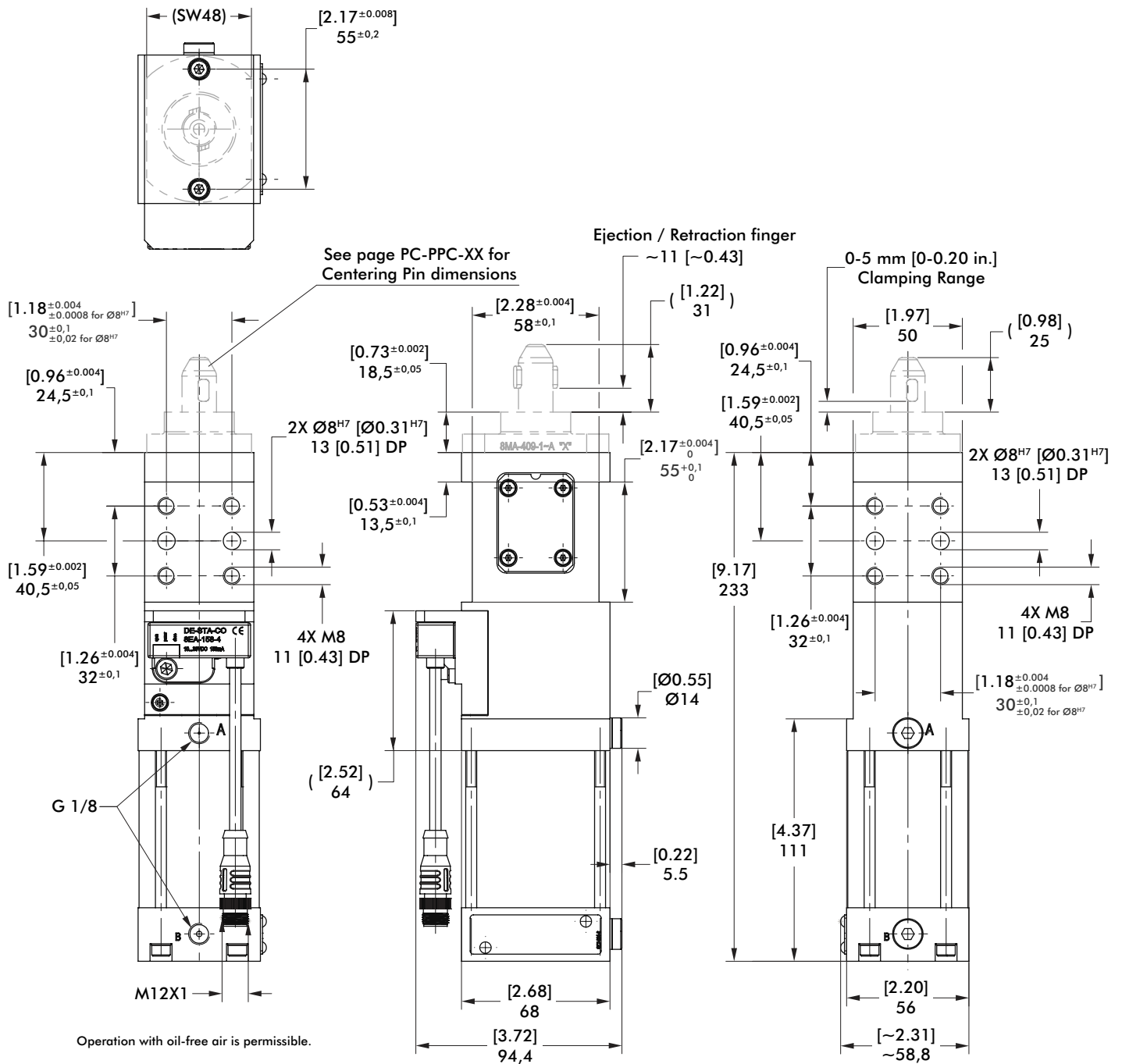
Pin Shape	Description
<b>00</b>	Standard
<b>01*</b>	Pin Clipping
<b>02*</b>	Pin Release on Flat Perpendicular of Finger
<b>03*</b>	Pin Release on Flat Parallel of Finger

**\*Pin Clipping/Release Dimension X**  
 Ø15,8 = 14,5 mm  
 Ø19,8 = 18,0 mm  
 Ø20,3 = 18,0 mm  
 Ø29,8 = 27,5 (Pin Shape 01, 02)  
 Ø29,8 = 25,0 (Pin Shape 03)



**82P50-8**

## Pneumatic Pin Package | Tolerance Compensation | Dimensions and Technical Specifications

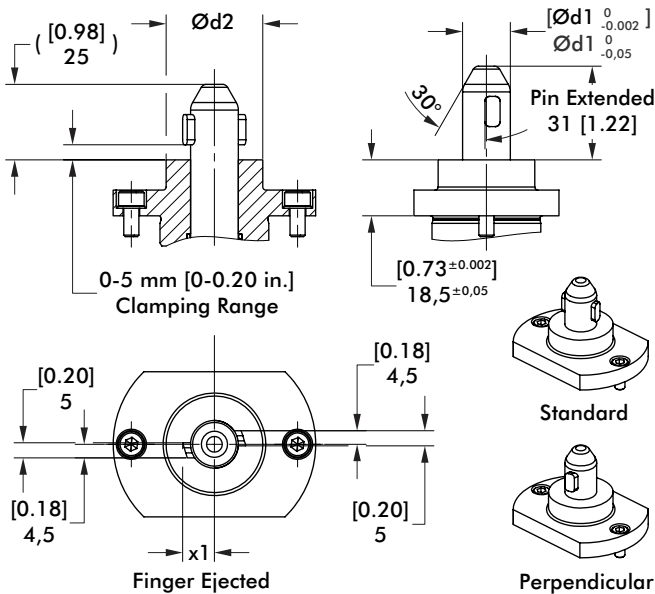


Specification	Unit	82P50-800
Max. Clamping Force @ 5 bar	[lbf] N	[124] 550
Max. Operating Pressure	[psi] bar	[87] 6
Actuation Time: Open	sec	0.3
Close	sec	0.3
Air Consumption per Double Stroke @ 6 bar [87psi]	[in <sup>3</sup> ] liter	[42.72] 0.7
Weight	[lb] kg	[5.73] 2.6

# 82P50-800 CENTERING PINS

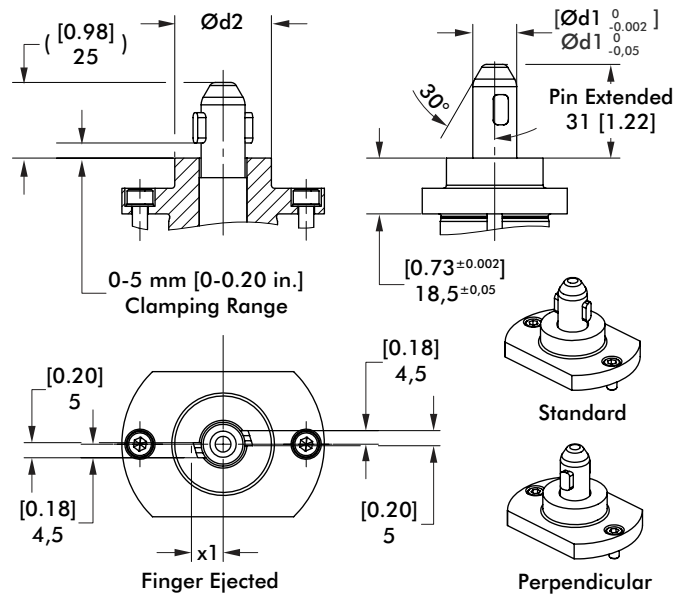
Pneumatic Pin Package | Tolerance Compensation | Dimensions and Technical Specifications

## 00 Standard Pin



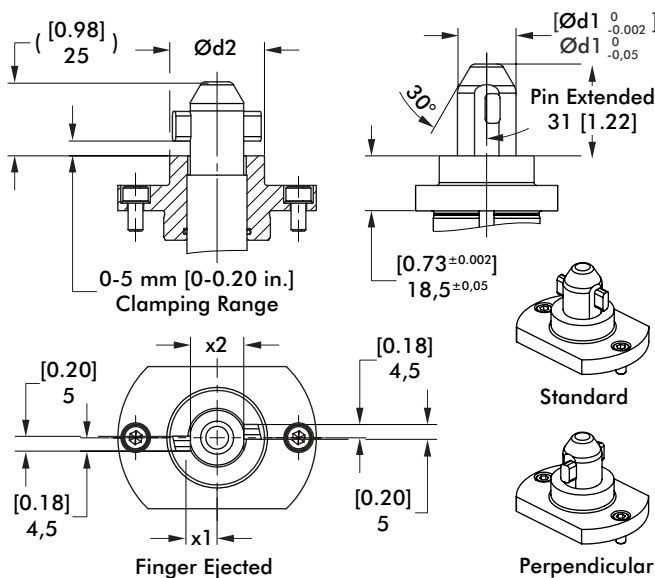
Pin Size	Ød1	Ød2	x1
01	15.8 [0.62]		10.4 [0.41]
02	19.8 [0.78]	32 [1.26]	15.8 [0.62]
03	20.3 [0.80]		20.6 [0.81]
04	29.8 [1.17]	48 [1.89]	20.6 [0.81]

## 01 Pin Clipping



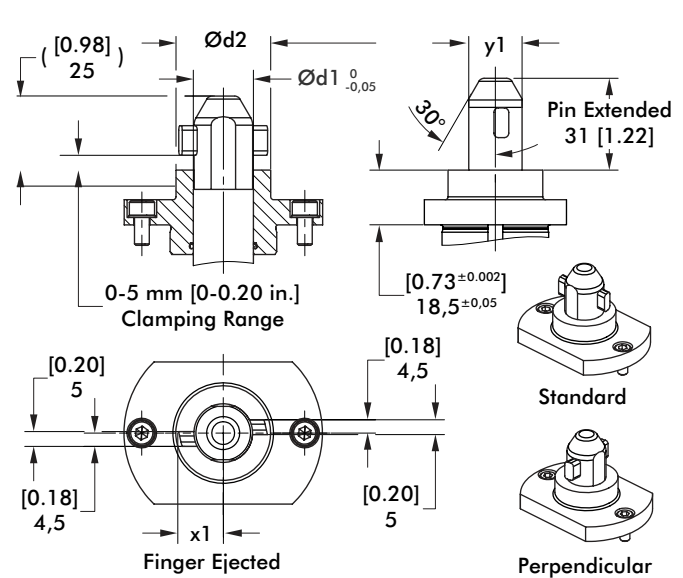
Pin Size	Ød1	Ød2	x1
00	14,5 [0.57]		10,4 [0.41]
01	18 [0.71]	32 [1.26]	14,9 [0.59]
02	18 [0.71]	32 [1.26]	14,9 [0.59]
03	27,5 [1.08]	48 [1.89]	19,5 [0.77]

## 02 Pin Release on Flat Perpendicular of Finger



Pin Size	Ød1	Ød2	x1	x2
00	15.8 [0.62]		10.4 [0.41]	14.5 [0.57]
01	19.8 [0.78]	32 [1.26]	14,9 [0.59]	18 [0.71]
02	20.3 [0.80]		19,5 [0.77]	27.5 [1.08]
03	29.8 [1.17]	48 [1.89]	19,5 [0.77]	27.5 [1.08]

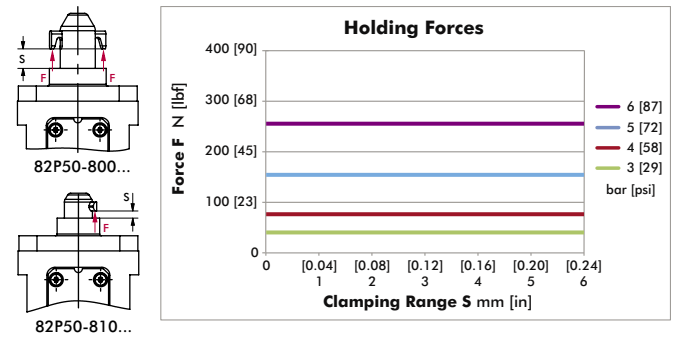
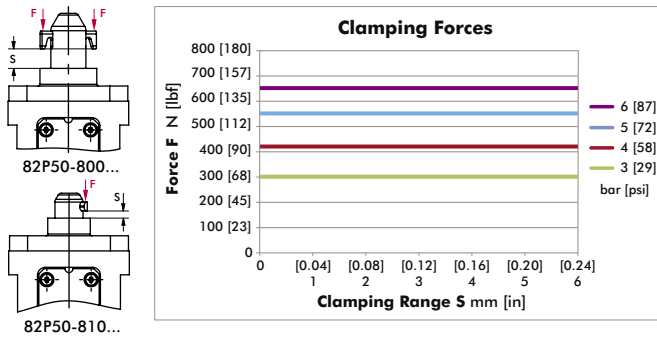
## 03 Pin Release on Flat Parallel of Finger



Pin Size	Ød1	Ød2	x1	y1
00	15.8 [0.62]		10,4 [0.41]	14,5 [0.57]
01	19.8 [0.78]	32 [1.26]	15.8 [0.62]	18 [0.71]
02	20.3 [0.80]		20.6 [0.81]	25 [0.98]
03	29.8 [1.17]	48 [1.89]	20.6 [0.81]	25 [0.98]

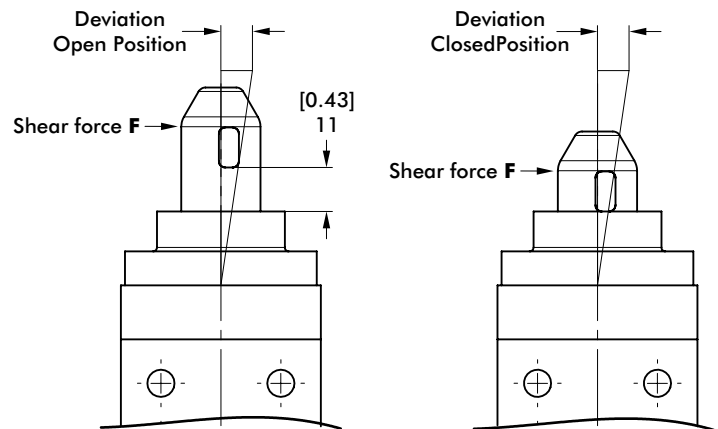


## Pneumatic Pin Package | Tolerance Compensation | Dimensions and Technical Specifications



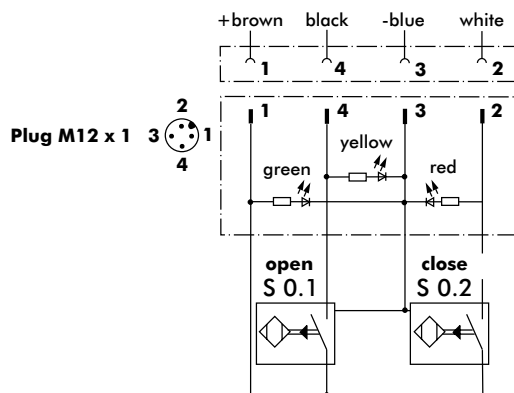
### Max Deviation for Centering Pin

Model no.	Position	Shear Force F N [lbf]	Deviation ± mm [in]
82P50-800	Open	100 [23]	0,032 [0.0013]
	Closed	100 [23]	0,023 [0.0009]



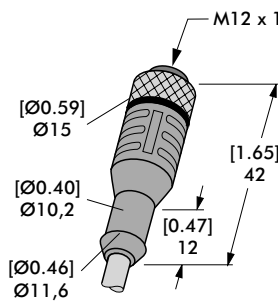
### Inductive Sensor Wiring Diagram

Sensing system immune to interference from AC / DC arc welding.

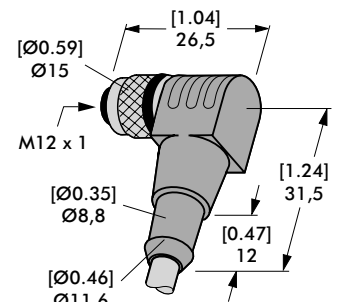


### Sensor Cable Accessories

Sensor Cables (1 connector & 5m cable)	Order no.
M12x1 connector, straight, 5-pin	8EL-002-1
M12x1 connector, 90° angular, 4-pin	8EL-003-1



**Straight Cable**  
8EL-002-1



**Angular Cable**  
8EL-003-1

# 82U50-3

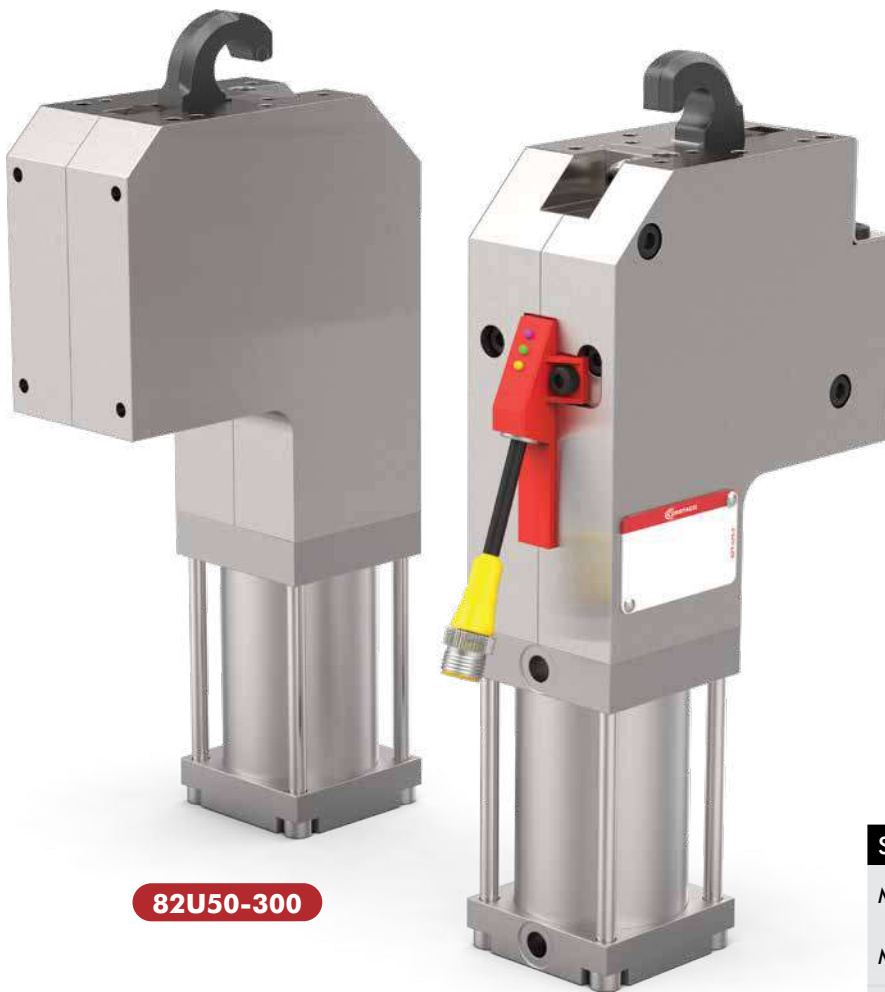
## Pneumatic Pallet Clamp | Ordering and Technical Information

**82U50** - **300** **L1** **00**

Size	Description
<b>300</b>	Front, top or bottom mounting
<b>330</b>	Top or bottom mounting only

Accessories	Description
<b>00</b>	No Accessories

Sensor	Description
<b>L1</b>	Without Sensing System
<b>C8</b>	Inductive Sensing System with M8x1 Connector (8EA-023-2)
<b>B7</b>	Inductive Sensing System, M12x1 Connector (8EA-060-1)
<b>B8</b>	Inductive Sensing System with M12x1 Cable Connector (8EA-031-1)

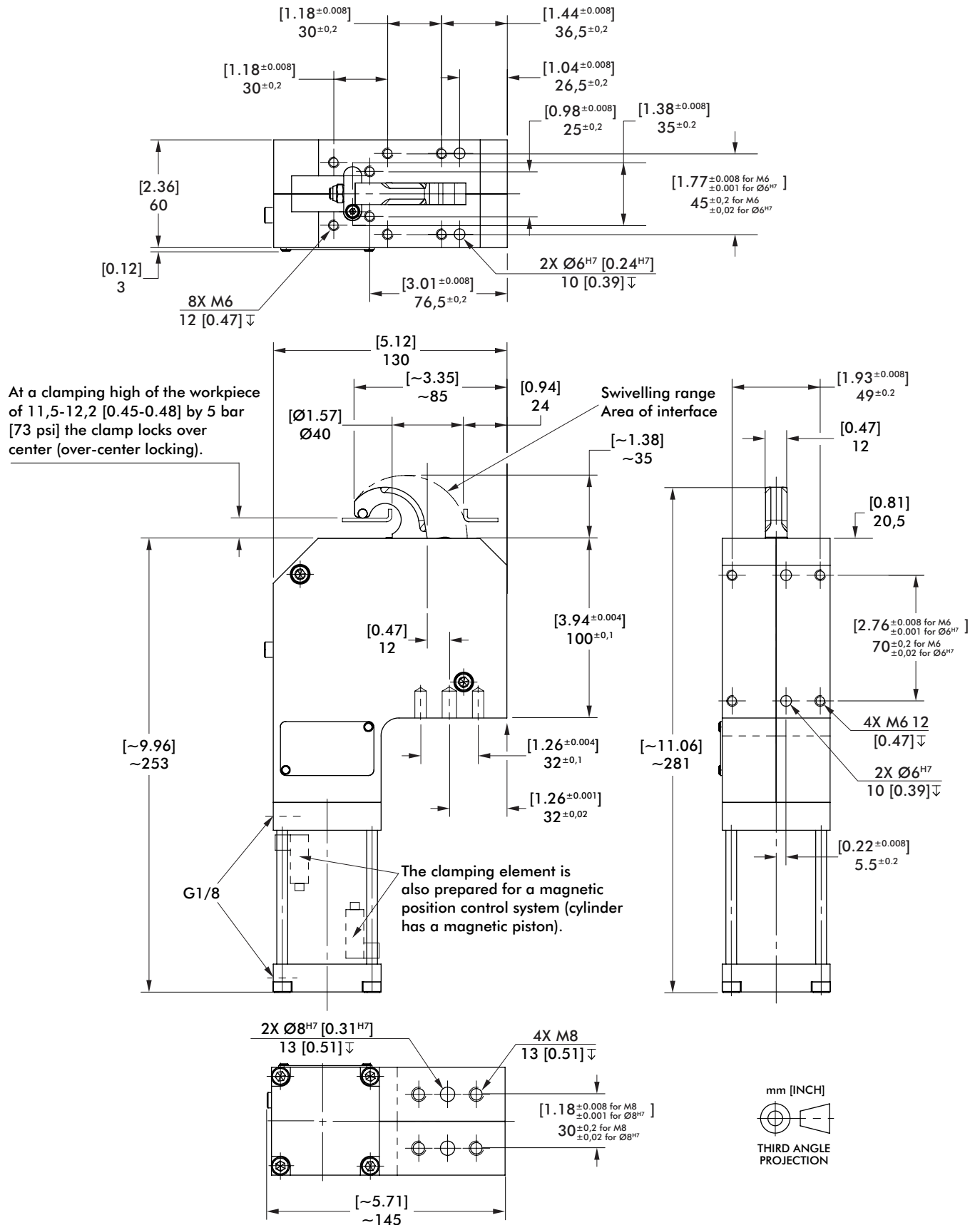


**82U50-300**

**82U50-330**

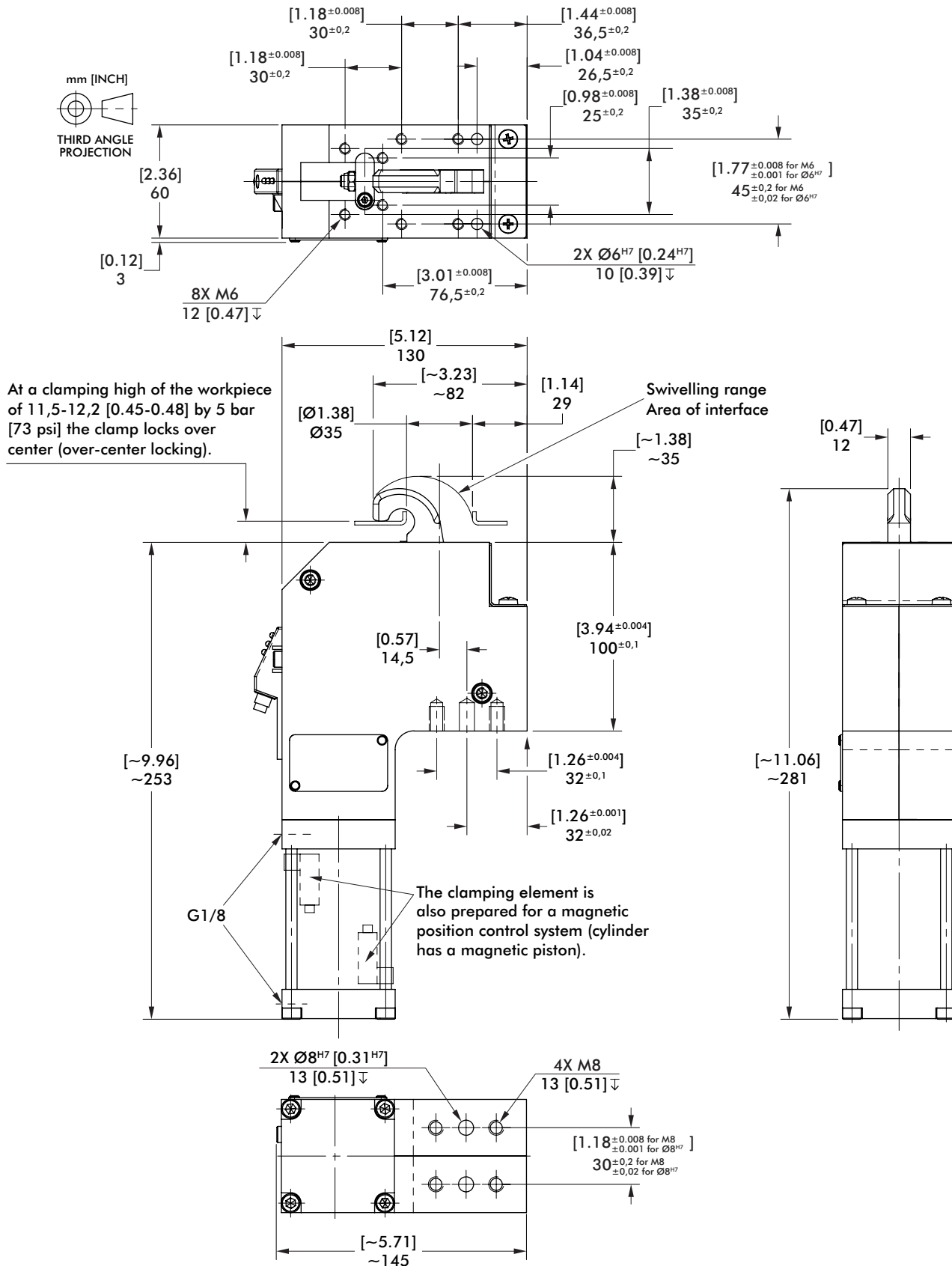


Specification	Unit	82U50
Max. Holding Force @ 5 bar	[lbf] N	[899] 4000
Max. Clamping Force @ 5 bar	[lbf] N	[899] 4000
Max. Operating Pressure	[psi] bar	[87] 6
Cylinder Diameter	mm	50
Weight	[lb] kg	[7.04] 3,2



# 82U50-3

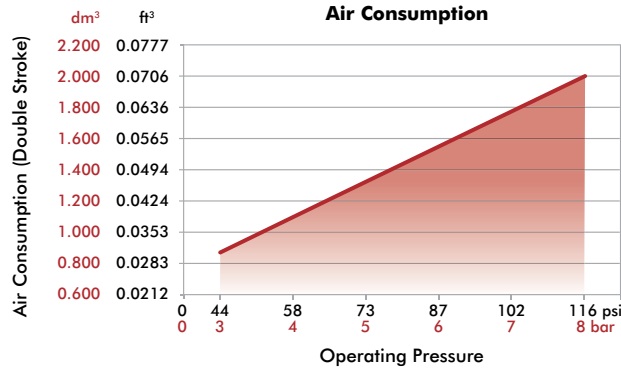
## Pneumatic Pallet Clamp | Dimensions



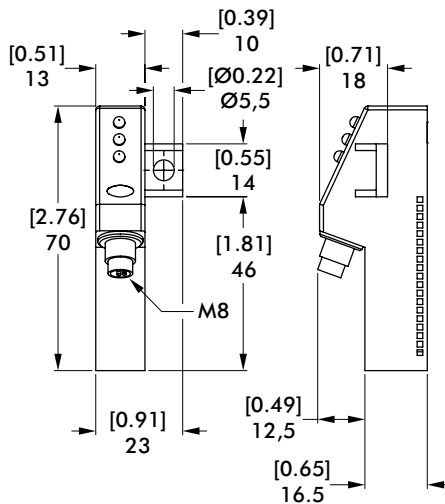
# 82U50-3 SENSORS

## Pneumatic Pallet Clamp | Dimensions and Technical Specifications

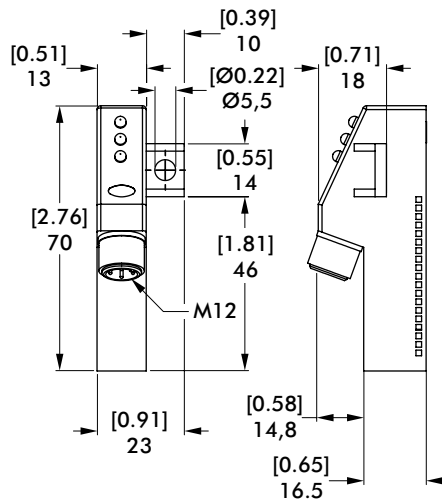
### Air Consumption



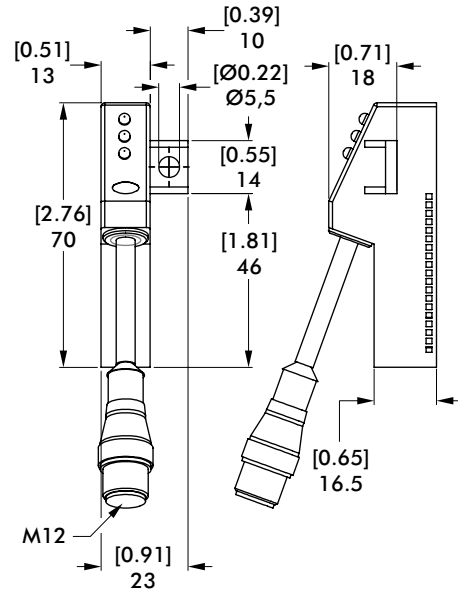
### C8 M8 Inductive Sensing System



### B7 M12 Inductive Sensing System



### B8 M12 Inductive Sensing System with Pigtail Connector

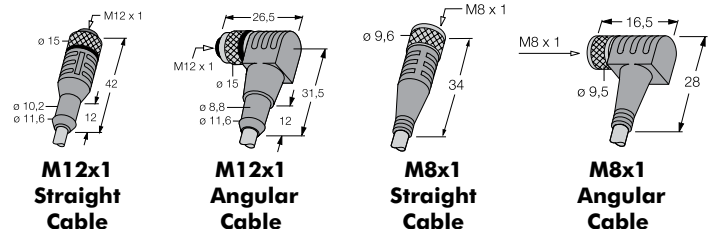
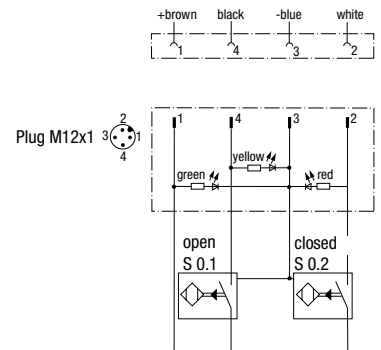


### Sensor Cable Accessories and Spare Parts

Sensor Accessories	Order no.
<b>B7/B8 Sensor Cables</b> (1 connector & 5 m cable)	
M12x1 connector, straight, 5-pin	<b>8EL-002-1</b>
M12x1 connector, 90° angular, 4-pin	<b>8EL-003-1</b>
<b>C8 Sensor Cables</b> (1 connector & 5 m cable)	
M8x1 connector, straight, 5-pin	<b>8EL-009-1</b>
M8x1 connector, 90° angular, 4-pin	<b>8EL-007-1</b>
<b>M8 to M12 Adaptor</b>	<b>8EL-008-1</b>
<b>Sensing system attached to cylinder</b>	
Magnetic sensors plus installation material	<b>8EA-025-1</b>
Spare Parts	Order no.
<b>Pneumatic Cylinder</b>	<b>8PW-007-1</b>
<b>Seal Kit</b>	<b>8PW-007-1-00</b>
<b>Spare Part Kit: Bushings, Bearings, pins</b>	<b>8KB-047-1</b>

### Inductive Sensor Wiring Diagram

Sensing system immune to interference from A.C./D.C. arc welding.



# VV85G-150

## Precision Guide | Ordering and Technical Information

**VV85G-150**   **40**   **L8**

Stroke	Description
20	20 mm Stroke
40	40 mm Stroke

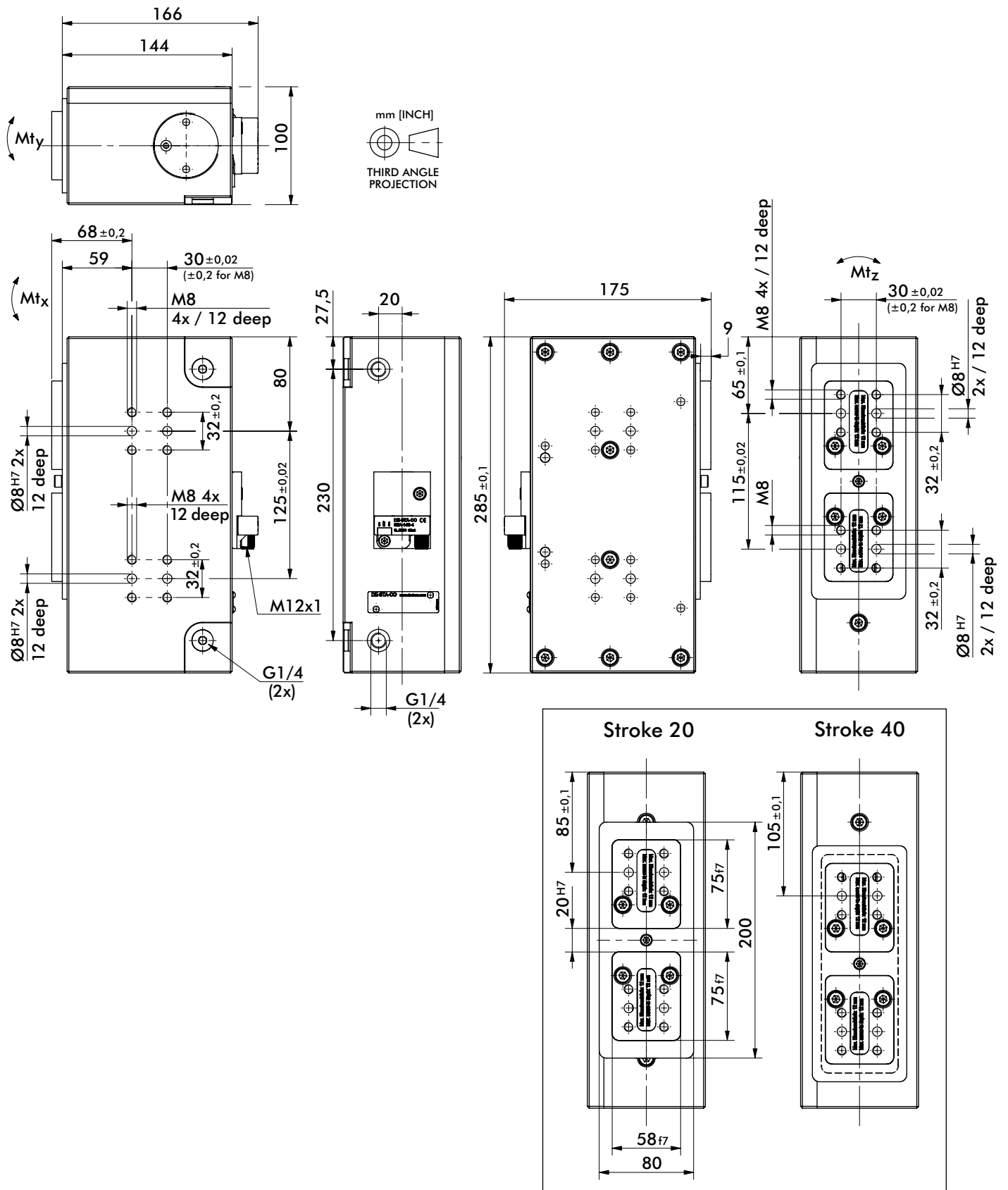
Sensor	Description
00	Without Sensing System
L8	PNP Sensor with In-line M12x1 Connector (8EA-146-4-B)
N8	NPN Sensor with In-line M12x1 Connector (8EA-154-4-B)
L9	PNP Sensor with 90° M12x1 Connector (8EA-147-4-B)
N9	NPN Sensor with 90° M12x1 Connector (8EA-155-4-B)
K8	PNP Sensor with M12x1 Cable Connector (8EA-158-4-B)
K9	NPN Sensor with M12x1 Cable Connector (8EA-167-4-B)



Model	Stroke mm [in]	Max. Load Nm [ft-lb] ±0,2 mm [0.008 in.]			Lifting Force N [lbf]	Holding Force N [lbf]	Weight Kg [lbs]	Air Consumption per double stroke at 5 bar [72 psi] dm³ [in³]
		Mtx	Mty	Mtz				
VV85G-15020**	20 [0.79]	[74]	[74]	[37]	500 [112]	[899] 4000	[29.1] 13,2	0,7 [42.7]
VV85G-15040**	40 [1.57]	100	100	50				1,1 [67.1]

# VV85G-150

## Precision Guide | Dimensions

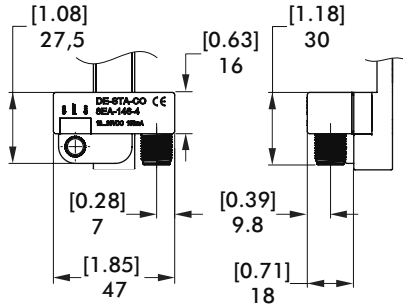


Operation with oil-free air is permissible

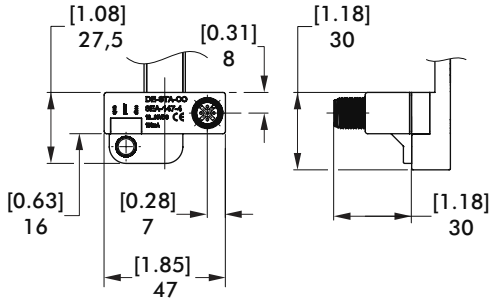
# VV85G-150

## Precision Guide | Dimensions and Technical Specifications

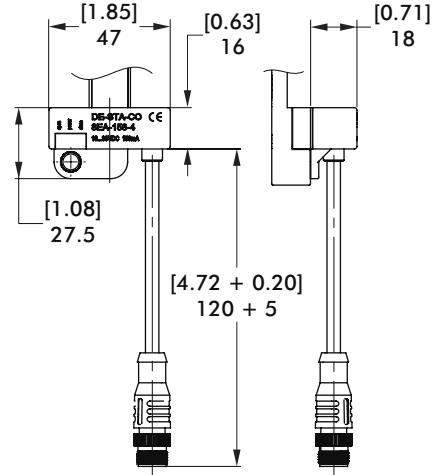
### L8, N8 Inductive Sensing System



### L9, N9 Inductive Sensing System with 90° Connector

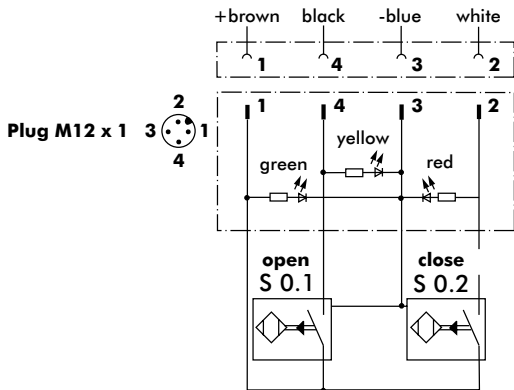


### K8, K9 Inductive Sensing System with Pigtail Connector



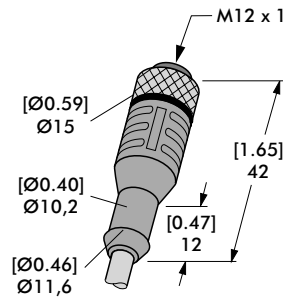
### Inductive Sensor Wiring Diagram

Sensing system immune to interference from AC / DC arc welding.

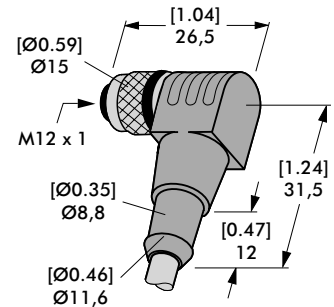


### Sensor Cable Accessories

Sensor Cables (1 connector & 5m cable)	Order no.
M12x1 connector, straight, 5-pin	<b>8EL-002-1</b>
M12x1 connector, 90° angular, 4-pin	<b>8EL-003-1</b>

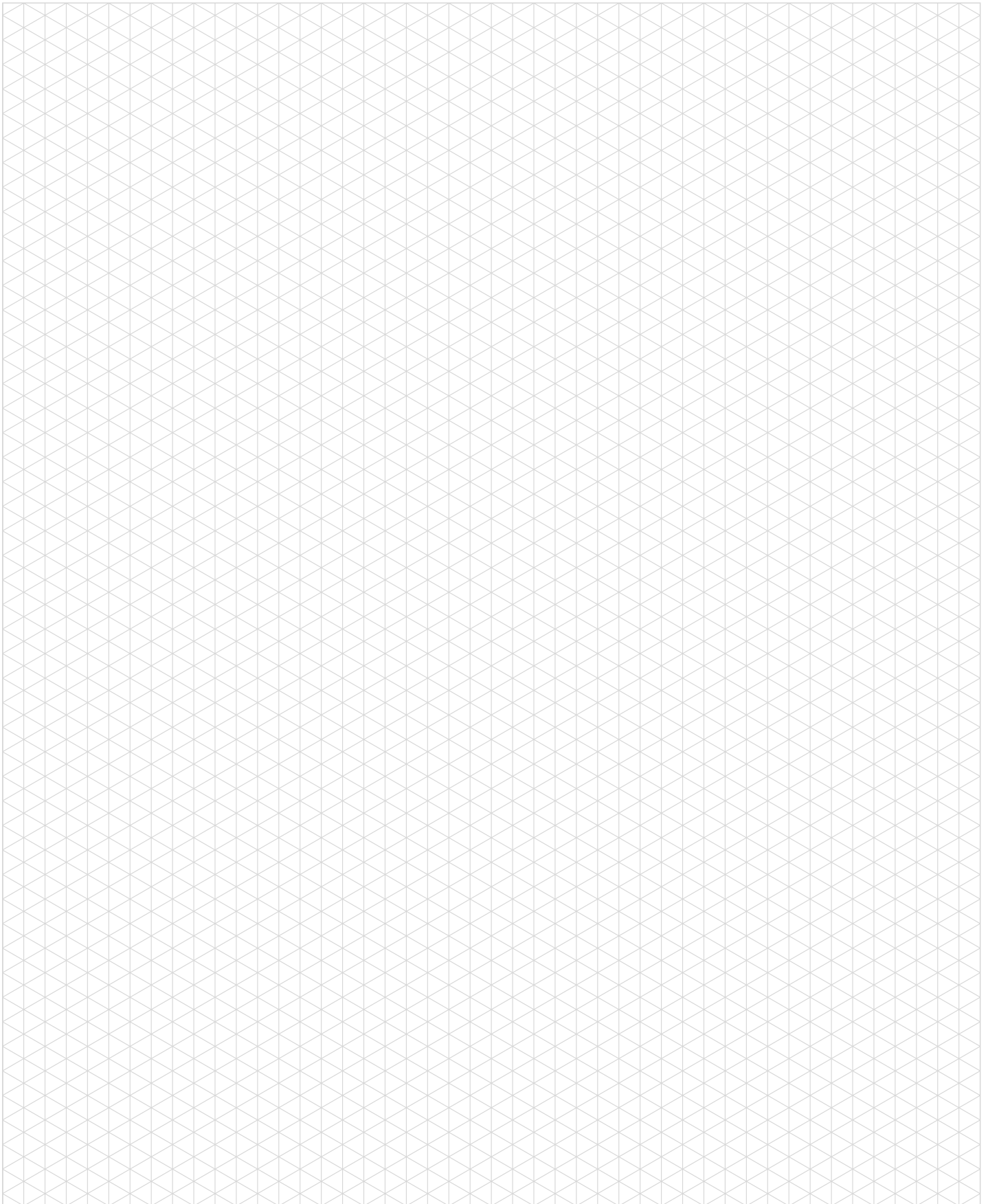


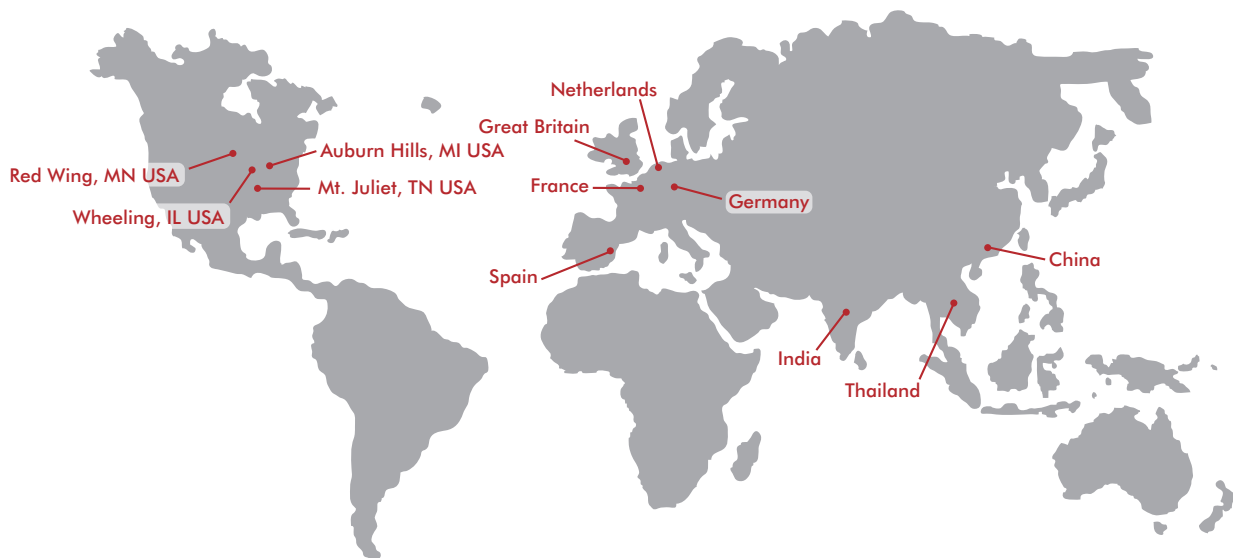
**Straight Cable**  
8EL-002-1



**Angular Cable**  
8EL-003-1







## GLOBAL LOCATIONS

### NORTH AMERICA

#### Corporate Headquarters

Auburn Hills, Michigan  
Toll Free: 1.888.DESTACO  
Marketing: [marketing@destaco.com](mailto:marketing@destaco.com)

#### Global Technology Center

Auburn Hills, Michigan  
Tel: 1.248.836.6700  
Customer Service: [customerservice@destaco.com](mailto:customerservice@destaco.com)

Mt. Juliet, Tennessee  
Tel: 1.888.DESTACO  
Customer Service: [customerservice@destaco.com](mailto:customerservice@destaco.com)

Wheeling, Illinois  
Tel: 1.800.645.5207  
Customer Service: [camco@destaco.com](mailto:camco@destaco.com)

Red Wing, Minnesota (Central Research Laboratories)  
Tel: 651.385.2142  
Customer Service: [sales@centres.com](mailto:sales@centres.com)

### ASIA

Thailand  
Tel: +66-2-326-0812  
Customer Service: [info@destaco.com](mailto:info@destaco.com)

China  
Tel: +86-21-6081-2888  
Customer Service: [china@destaco.com](mailto:china@destaco.com)

India  
Tel: +91-80-41123421-426  
Customer Service: [india@destaco.com](mailto:india@destaco.com)

### EUROPE

Germany  
Tel: +49-6171-705-0  
Customer Service: [europe@destaco.com](mailto:europe@destaco.com)

France  
Tel: +33-4-73545001  
Customer Service: [france@destaco.com](mailto:france@destaco.com)

Great Britain  
Tel: +44-1902-797980  
Customer Service: [uk@destaco.com](mailto:uk@destaco.com)

Spain  
Tel: +34-936361680  
Customer Service: [spain@destaco.com](mailto:spain@destaco.com)

Netherlands  
Tel: +31-297285332  
Customer Service: [benelux@destaco.com](mailto:benelux@destaco.com)