
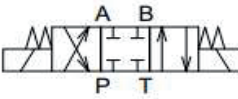




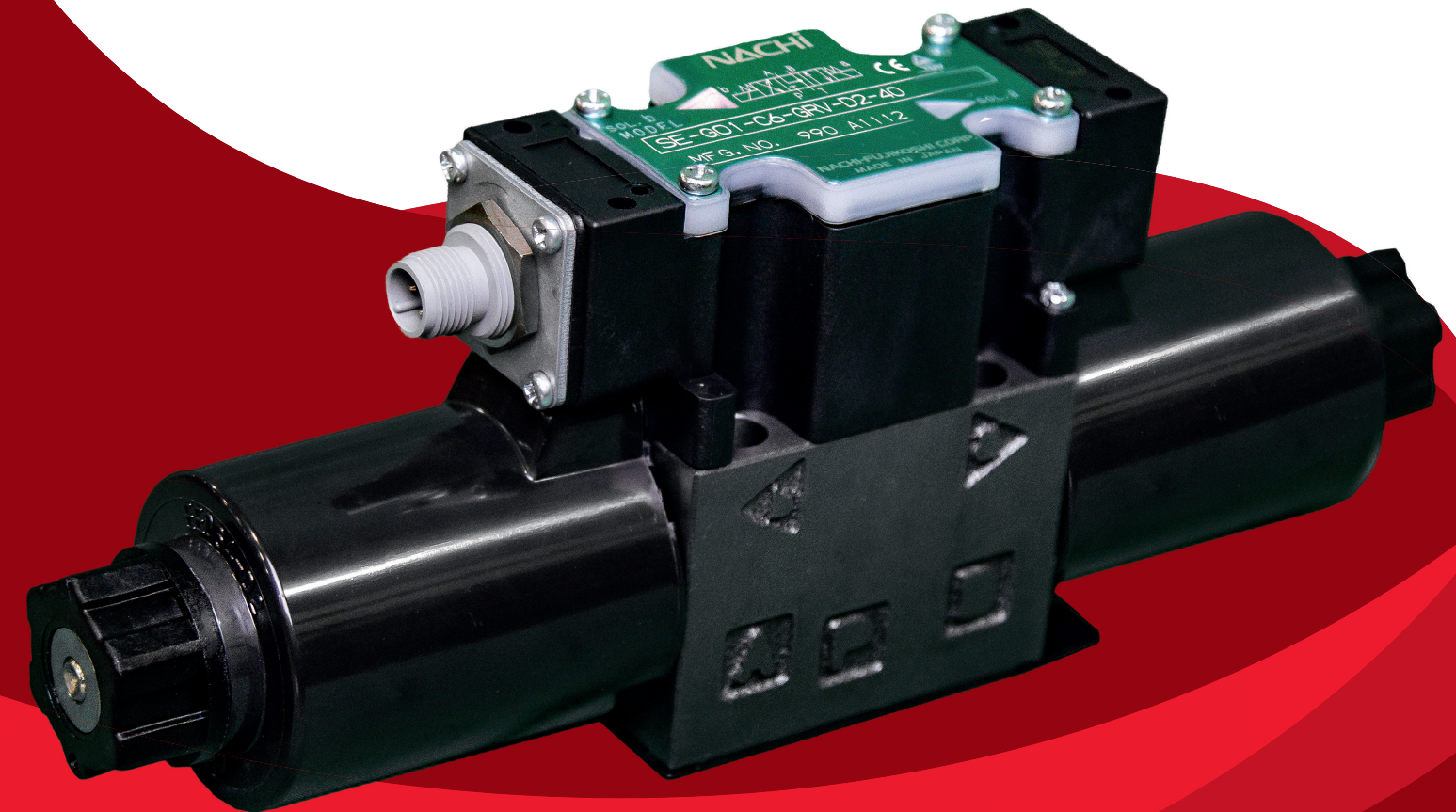
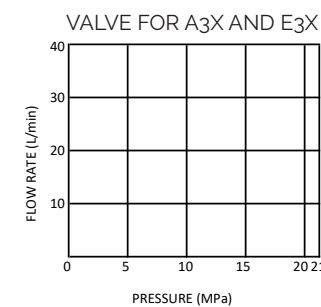
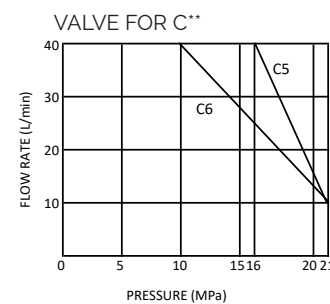
NACHI

SE Series Solenoid Valve

Valve Specifications

JIS Symbol	VALVE SPOOL TYPE	MAXIMUM OPERATING PRESSURE (MPa)	MAXIMUM FLOW (L/min)	PERMISSABLE BACK PRESSURE (MPa)
	A3X	21	See Figure Below	16
	C5			
	C6			
	E3X			

Pressure - Flow Volume Allowed



Multiple Valves with Minimal Wiring
200mA Holding Current

**Allows the Utilization of I/O and
Wiring Blocks to Connect**

3000 PSI

NACHI
NACHI AMERICA INC.

877.622.4487
ml-nai.Hydraulics@Nachi.com
www.NachiAmerica.com

Nachi America Inc.
715 Pushville Road
Greenwood, IN 46143

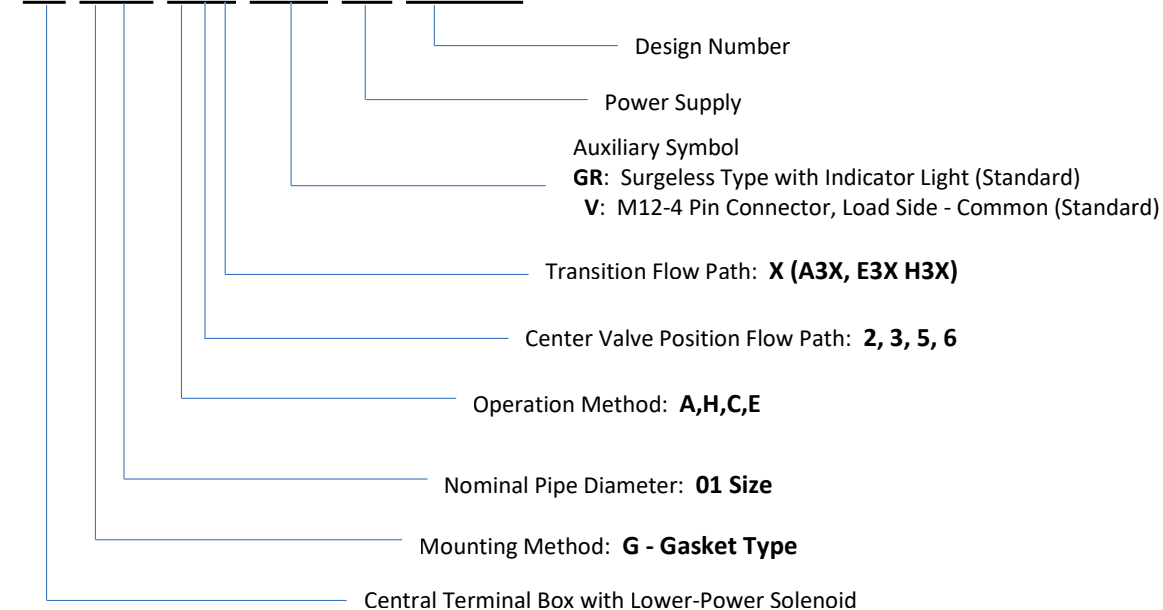


SE Series Solenoid Valve Features

- Allows for 40 LPM at 10MPa
 - Increased flow rate at 10 LPM higher than earlier models
 - Low power consumption
 - Low coil temperature elevation minimizes the effects of heat
 - Small chance of coil burnout even with the AC solenoid
 - M12-4 pin connector option makes it easier to interface with open networks (e.g., DeviceNet)
 - Extended durability
 - G01 size is globally compliant and meets TÜV and CE Mark safety standards
- Ideal Use:**
- Powering a directional valve entirely off a 24 VDC I/O board
 - Powering idle system circuits for a lifecycle where pressure/flow rate falls within the SE range (e.g., brake circuits, clamps, dye/injection molders, etc.)

Explanation of Model Number

SE-G01-*-GRV-D2-5702A**



Note: Available spool types include A3X, H3X, E3X, C5, C6



cesehsa.com.mx
info@cesehsa.com.mx

SE Valve

Solenoid Assembly Specification

Solenoid Type	DC
Power Supply Type	D2
Voltage	DC24V
Holding Current	0. 2A
Holding Power	4. 8W
Allowable Voltage Range	21. 6~26. 4V

Recommended Operating Conditions

Dustproof And Waterproof	:JIS C 0920 IP64
Operating Temperature Range	: -20~50°C
Operating Hydraulic Oil	:Petroleum Based Hydraulic Oil
Operating Hydraulic Oil Temperature Range	: -20~70°C
Operating Viscosity	:15~300 mm ² /s
Filtration	:25mm or Less

Solenoid Assembly Specification

Solenoid Type		SE-G01
		DC Solenoid
		D2
Maximum Working Pressure	P,A, B ports	3000 psi
Maximum Allowable Back Pressure	T port	2320 psi
Change Over Frequency (per minute)		120
Standard	Indicator Light Surgeless and M12-4 Pin Connector, Load Side	GRV
Weight (lbs.)	Double Solenoid	4.8
	Single Solenoid	3.7
Operating Environment	Operating Fluid	IP64 (Dust Tight, Splash Proof)
		Dust Resistance/ Water Resistance Rank
		Ambient Temperature
		Temperature Range
		Viscosity Range
		15 to 30 centistokes
	Filtration	25 microns or less
Bundled Accessories	Mounting Bolt	(4) 10-24 x 1 ¾ LG (not included) Use Grade 8 or equivalent
	Tightening Torque	3.5 to 5 ft lbs.