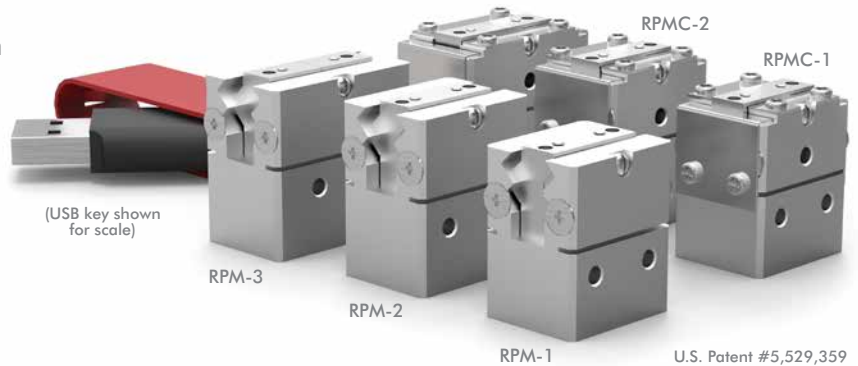


# RPM/RPMC SERIES

## 2-Jaw General Industrial Grippers | Features and Benefits | How To Order

### Features:

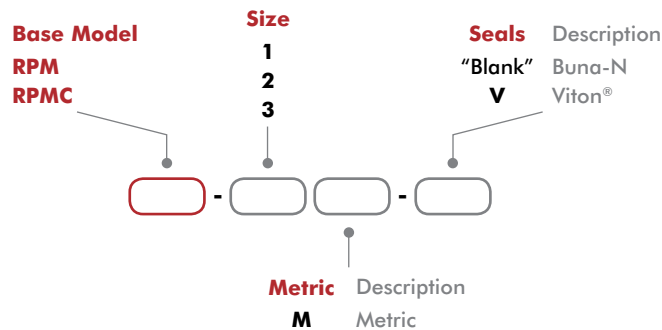
- Miniature gripper for small part gripping
- Zero side play due to Dual V bearing system
- Low friction and smooth operation for precise part position repeatability
- Create compact gripper arrays with top manifold design
- Adjustable pre-load screws eliminates side play over life of unit
- Purge and scavenge ports for clean/harsh environment operation
- Units are lubricated with clean-room grease
- Class 10 rated clean-room (RPMC)



### Applications:

- Ideal for semiconductor and life sciences laboratory applications
- Ultra small gripper for space constrained applications
- Sealed design operates in harsh environments (RPMC)
- Viton® seals option for High temperature applications  
-30°C to +150°C [-20°F to +300°F]

## How To Order



## Accessories

Pneumatic Accessories	Model Numbers	Part Number	Qty/Unit
M3 Plumbing Fitting Push-in for 3mm O.D. Tube	All Models	PLFT-021	2
M3 Plumbing Fitting Barb for 2mm I.D. Tube	All Models	PLFT-022	2
Buna-N Seal Repair Kit	All Models	SLKT-121	1
Viton® Seal Repair Kit	All Models	SLKT-121V	1
Top Air Ports Manifold Seal Kit (available in Viton® only)	All Models (RPM)	SLKT-142V	1
Top Air Ports Manifold Seal Kit (available in Viton® only)	All Models (RPMC)	SLKT-143V	1

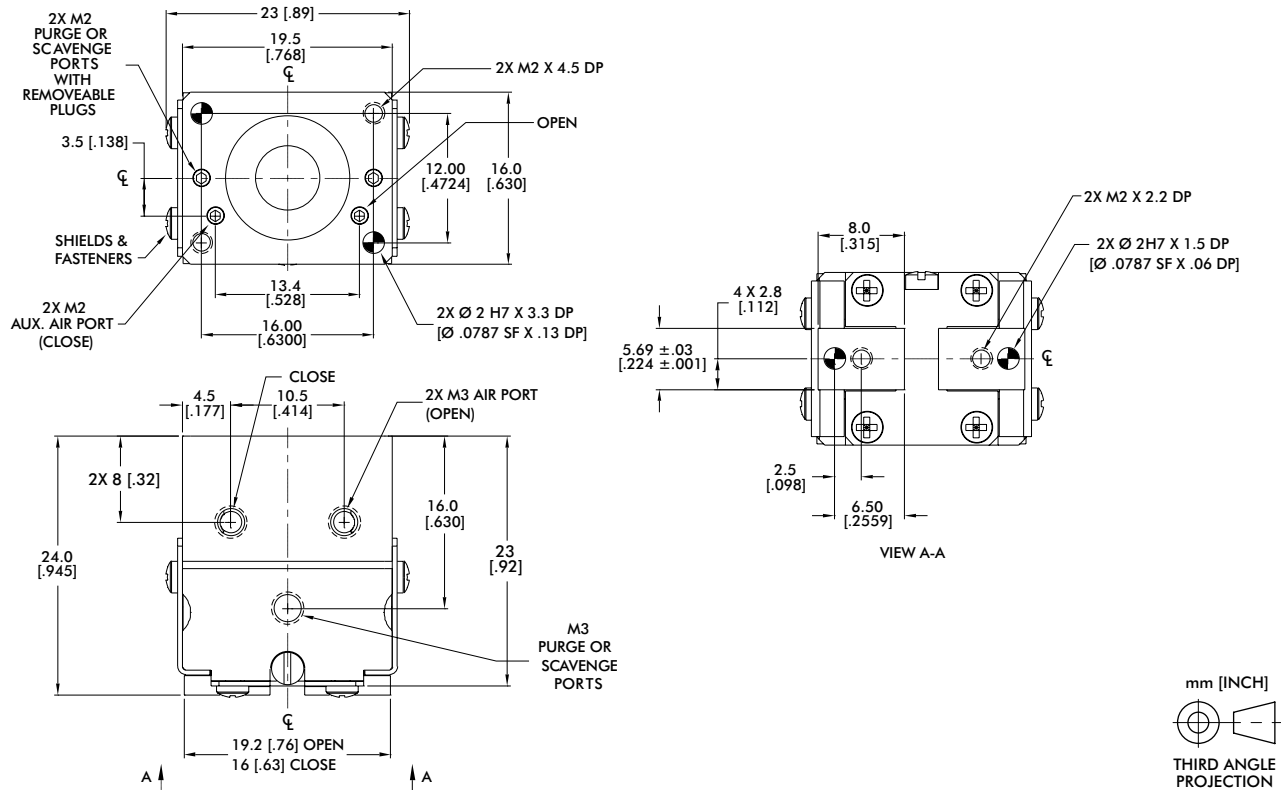
## 2-Jaw General Industrial Grippers | Technical Specifications

Specifications	Units	1	2	3
Total Rated Grip Force <b>F</b> @ 100 psi [7 bar]	N [lbs]	36 [8]		
Total Stroke	mm [in]	3.2 [0.13]	4.8 [0.19]	6.3 [0.25]
Weight	kg [lbs]	0.024 [0.052]	0.026 [0.058]	0.034 [0.074]
Pressure Range	bar [psi]	3-7 [40-100]		
Ingress Protection Class (IP)		IP 33 (RPM) / IP64 (RPMC)		
Displacement	cm <sup>3</sup> [in <sup>3</sup> ]	0.13 [0.008]	0.20 [0.012]	0.25 [0.015]
Temperature Range (Buna-N seals)	°C [°F]	-35°~80° [-30°~180°]		
Temperature Range (Viton® seals)	°C [°F]	-30°~120° [-20°~250°]		
Actuation (open/close)	sec	0.10		
Accuracy	mm [in]	±0.05 [±0.002]		
Repeatability	mm [in]	±0.03 [±0.001]		
Valve to Actuate		4-way, 2-position		

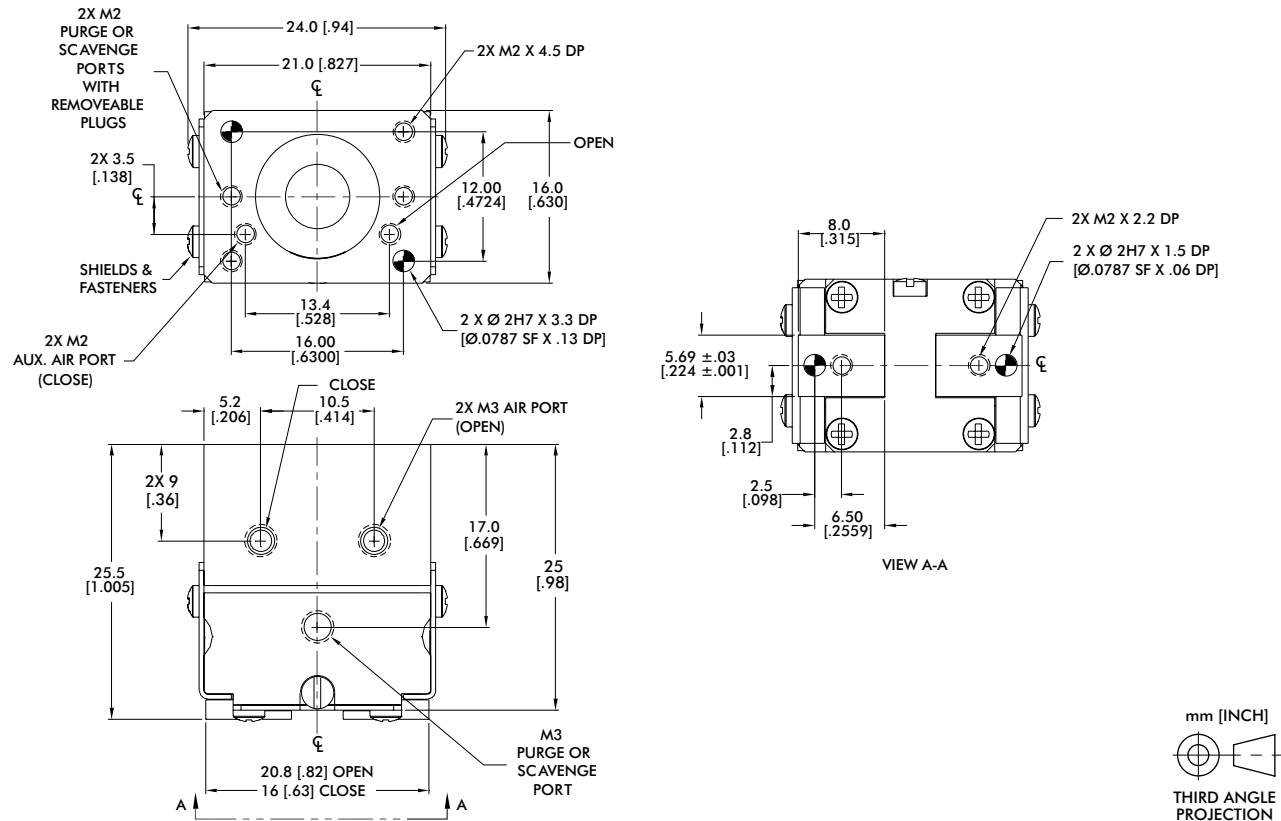
# RPM-1M/RPMC-1M, RPM-2M/RPMC-2M

## 2-Jaw General Industrial Grippers | Dimensions

### RPM-1M/RPMC-1M Dimensions



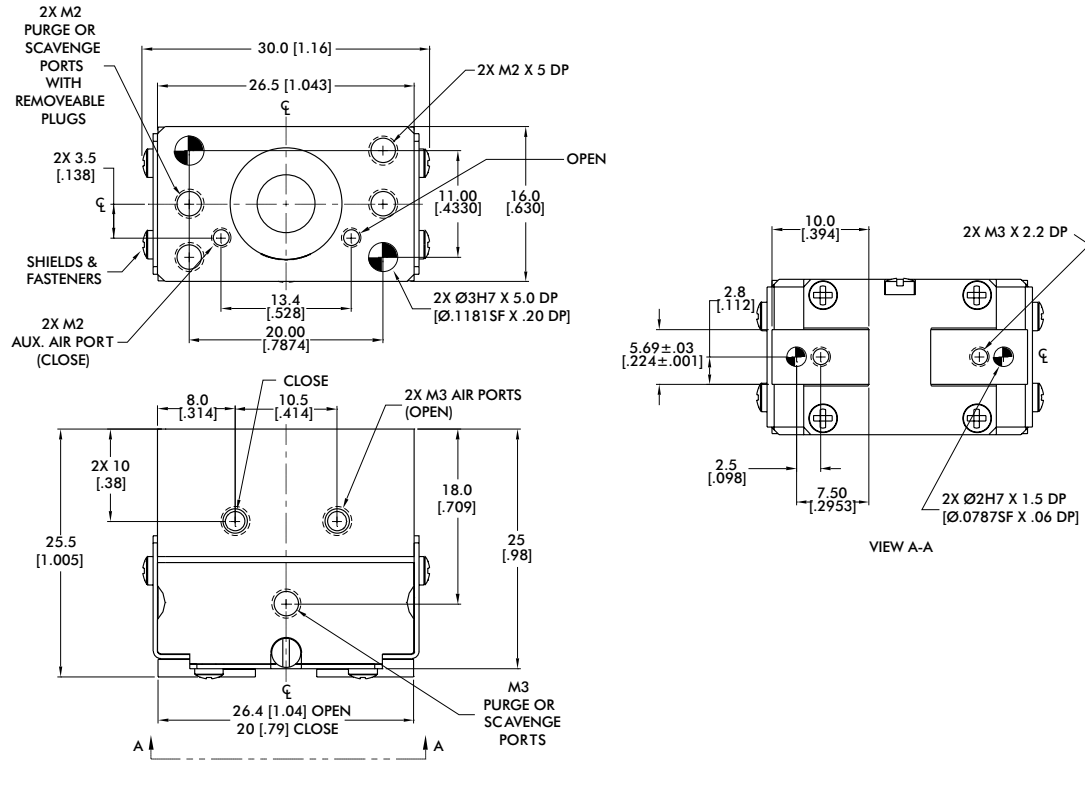
### RPM-2M/RPMC-2M Dimensions



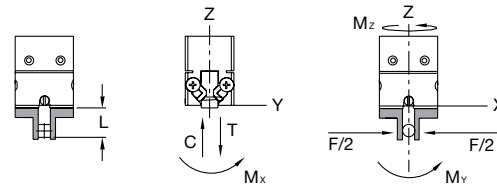
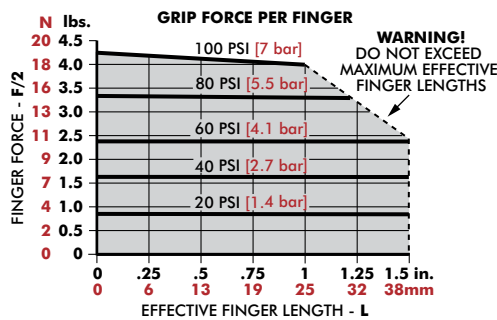
# RPM-3M/RPMC-3M

## 2-Jaw General Industrial Grippers | Dimensions and Technical Specifications

### RPM-3M/RPMC-3M Dimensions



### Loading Information



RPM	Static	Dynamic
Maximum Tensile <b>T</b>	89 N [20 lbs]	31 N [7 lbs]
Maximum Compressive <b>C</b>	89 N [20 lbs]	31 N [7 lbs]
Maximum Moment <b>M<sub>x</sub></b>	1 Nm [12 in-lbs]	0.5 Nm [4 in-lbs]
Maximum Moment <b>M<sub>y</sub></b>	2 Nm [15 in-lbs]	0.6 Nm [5 in-lbs]
Maximum Moment <b>M<sub>z</sub></b>	1 Nm [12 in-lbs]	0.5 Nm [4 in-lbs]

\*Capacities are per set of jaws and are not simultaneous



cesehsa.com.mx  
info@cesehsa.com.mx  
800 237 3472