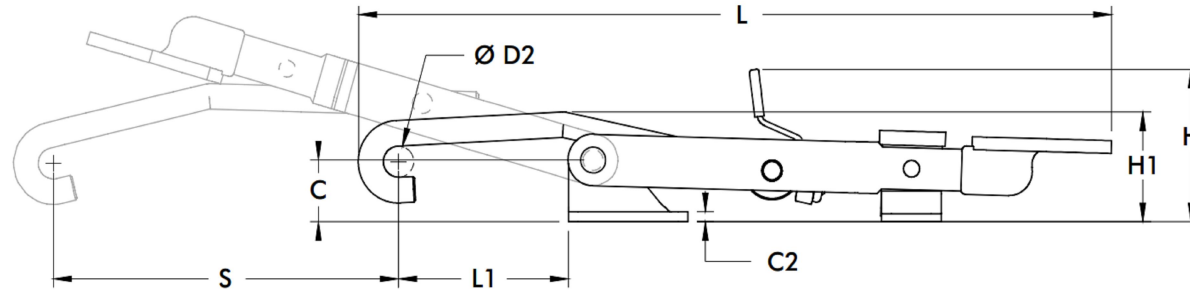
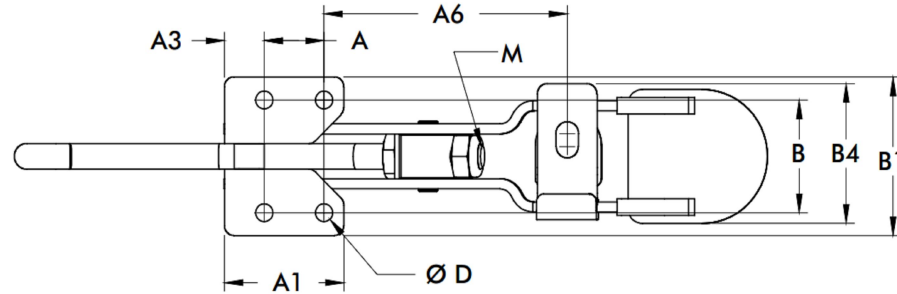
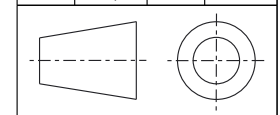


CLOSED POSITION



A	[1.25] 31,8	C2	[0.16] 4
A1	[1.94] 49,2	ØD	[0.34] 8,7
A3	[0.34] 8,7	H	[2.65] 67,4
A6	[4.73] 120,1	H1	[2.22] 56,3
B	[1.94] 49,2	L	[12.74] 323,6
B1	[2.63] 66,7	L1 MAX	[2.81] 71,4
B4	[2.25] 57,2	M	M10
C	[1.42] 36,1	S	[5.59] 142



**NOTES:**

1. Material : Steel
2. Max. Holding Capacity : 3340N [750lbf]
3. Weight : [1.88 lb] 0.85 Kg
4. Applications : Molding, Assembly, Closures for doors, lids, covers
5. All Drawing Dimensions are in [Inches] mm

COMPONENT	Pull Action Latch Clamps	
DIMENSIONS : [IN] MM	<b>371-RSS</b>	REV
TOLERANCES : ±[0.020] 0.51		03/11/19
	<b>371-SERIES</b>	SHEET
		1 of 1



This Drawing is the Property of DESTACO. It contains confidential, proprietary information that is DESTACO property. Do not disclose to or duplicate for others except as authorized by DESTACO.